

PROJECT REFERENCE NO.	SHEET NO.
B-5869	EC-05/CONST.05
RW SHEET NO.	
ROADWAY DESIGN ENGINEER	HYDRAULICS ENGINEER

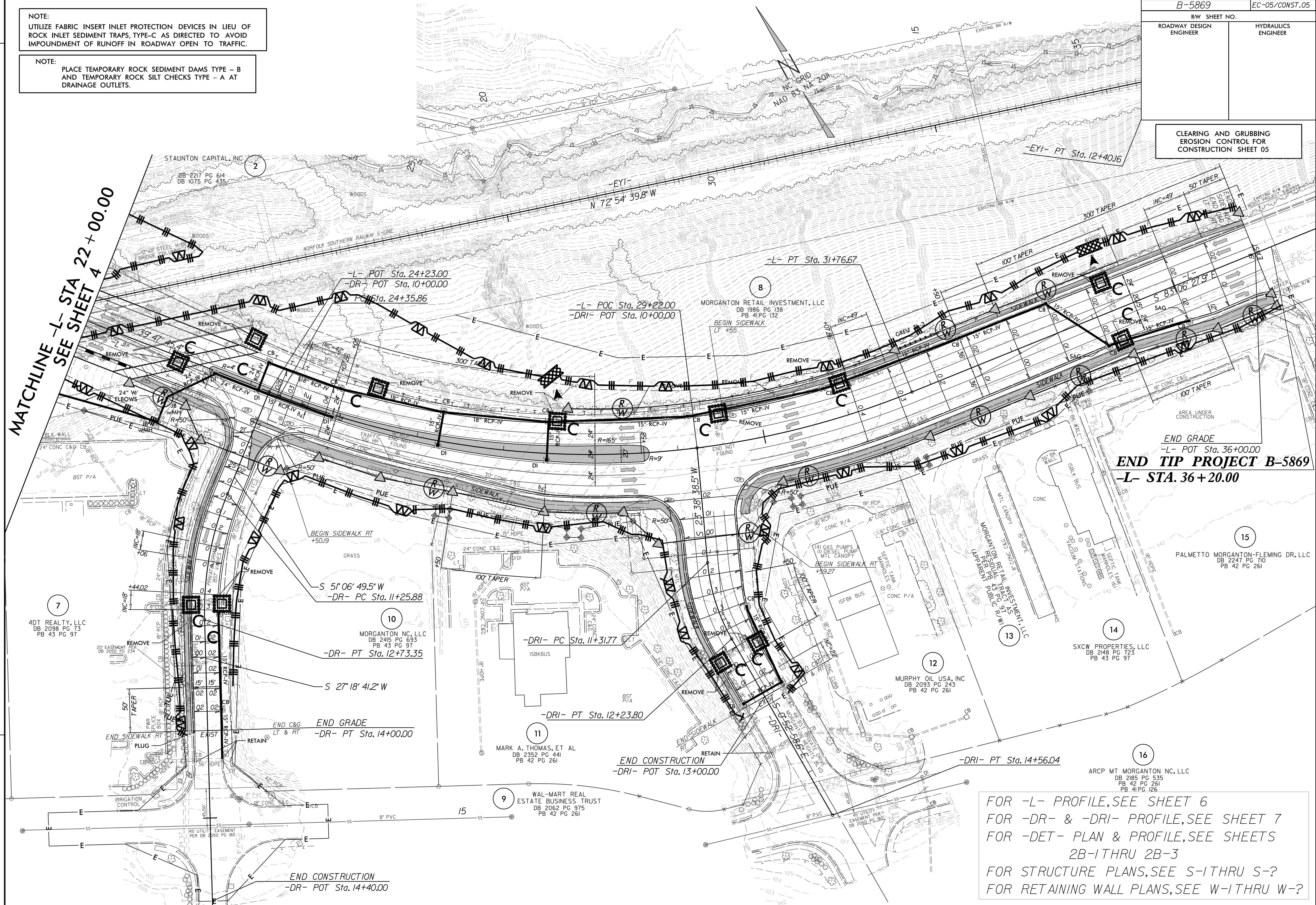
CLEARING AND GRUBBING EROSION CONTROL FOR CONSTRUCTION SHEET 05

NOTE:
UTILIZE FABRIC INSERT INLET PROTECTION DEVICES IN LIEU OF ROCK INLET SEDIMENT TRAPS, TYPE-C AS DIRECTED TO AVOID IMPOUNDMENT OF RUNOFF IN ROADWAY OPEN TO TRAFFIC.

NOTE:
PLACE TEMPORARY ROCK SEDIMENT DAMS TYPE - B AND TEMPORARY ROCK SILT CHECKS TYPE - A AT DRAINAGE OUTLETS.

REVISIONS
ROW REVISION: [12/16/2021; MDPJ -DR- CONVERTED TO RIGHT IN ONLY. PARCELS 7.9 & 10. EASEMENTS ADDED FOR PROPOSED MARKING AND SIGNING REVISIONS.

MATCHLINE -L- STA 22+00.00
SEE SHEET 4



END GRADE
-L- POT Sta. 36+00.00
END TIP PROJECT B-5869
-L- STA. 36+20.00

FOR -L- PROFILE, SEE SHEET 6
FOR -DR- & -DRI- PROFILE, SEE SHEET 7
FOR -DET- PLAN & PROFILE, SEE SHEETS 2B-1 THRU 2B-3
FOR STRUCTURE PLANS, SEE S-1 THRU S-?
FOR RETAINING WALL PLANS, SEE W-1 THRU W-?