

**ROADWAY TYPICAL SECTION NO. 1**

**USE TYPICAL SECTION NO. 1:**

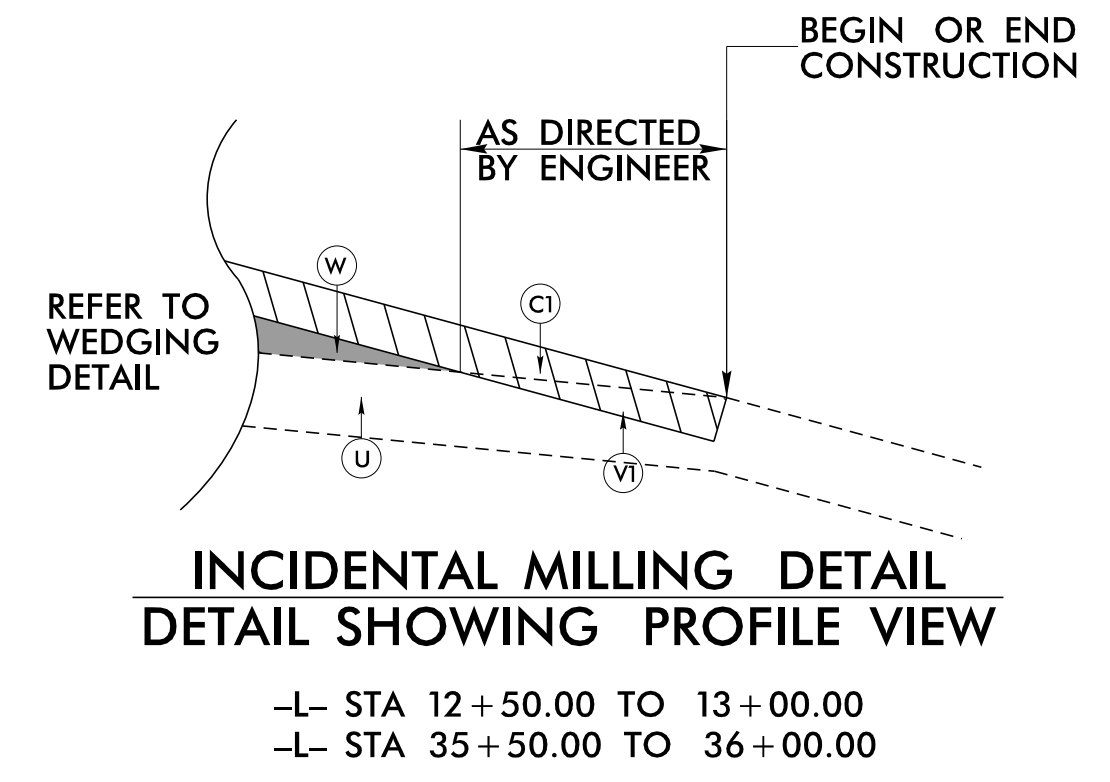
- L- STA 13+00.00 TO 20+47.70 (BEGIN BRIDGE)
- L- STA 23+14.20 (END BRIDGE) TO 35+50.00

**TRANSITION FROM TYPICAL SECTION NO. 1 TO EXISTING:**

- L- STA 35+50.00 TO 36+00.00

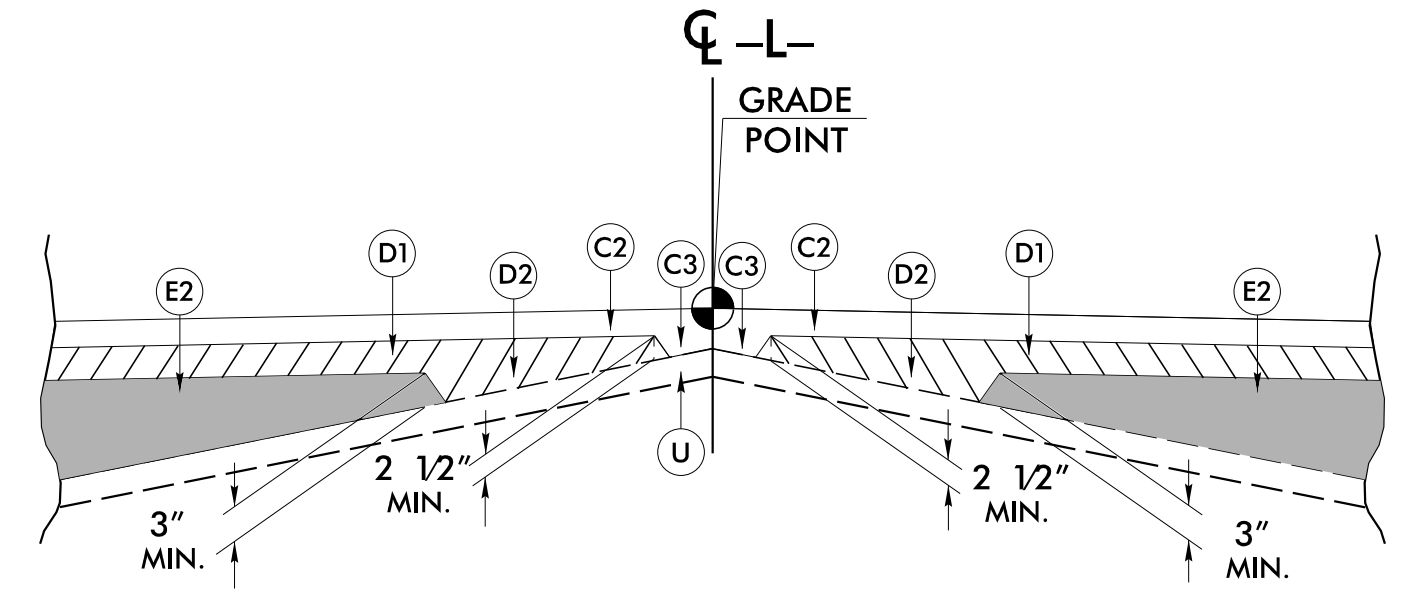
\* SIDEWALK: -L- STA 29+55 TO 36+00 LT

\*NOTE: -L TEMP1- & -L TEMP2- GRADES UTILIZE THE MAINLINE WEDGING PAVEMENT DESIGN.

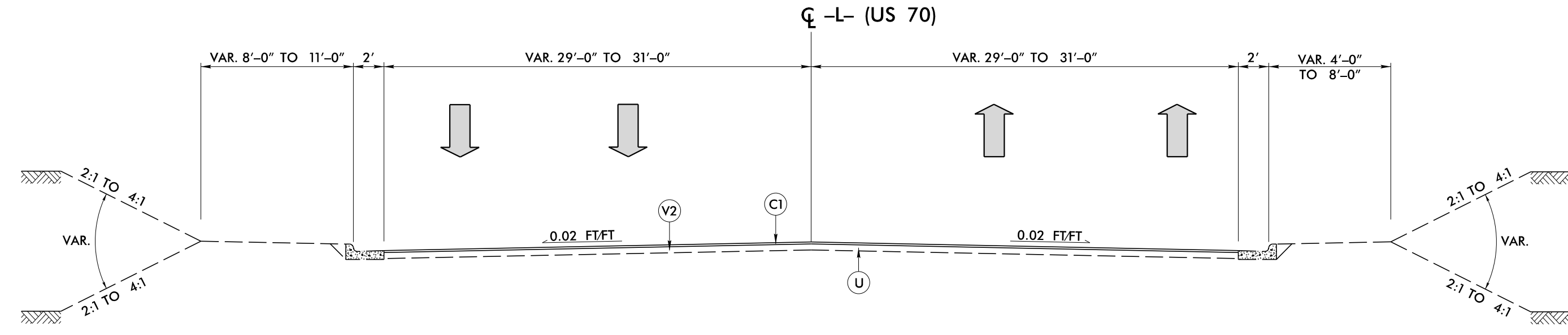


**INCIDENTAL MILLING DETAIL  
DETAIL SHOWING PROFILE VIEW**

-L- STA 12+50.00 TO 13+00.00  
-L- STA 35+50.00 TO 36+00.00



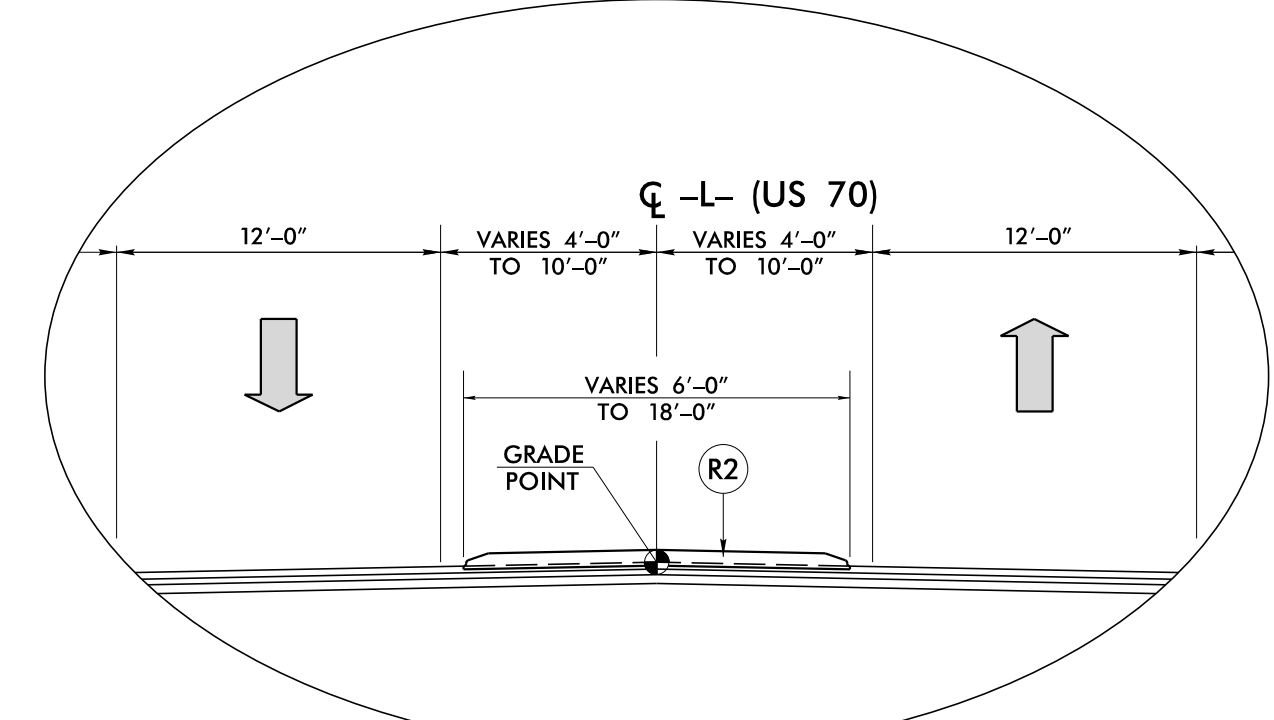
**Detail Showing Method of Wedging**



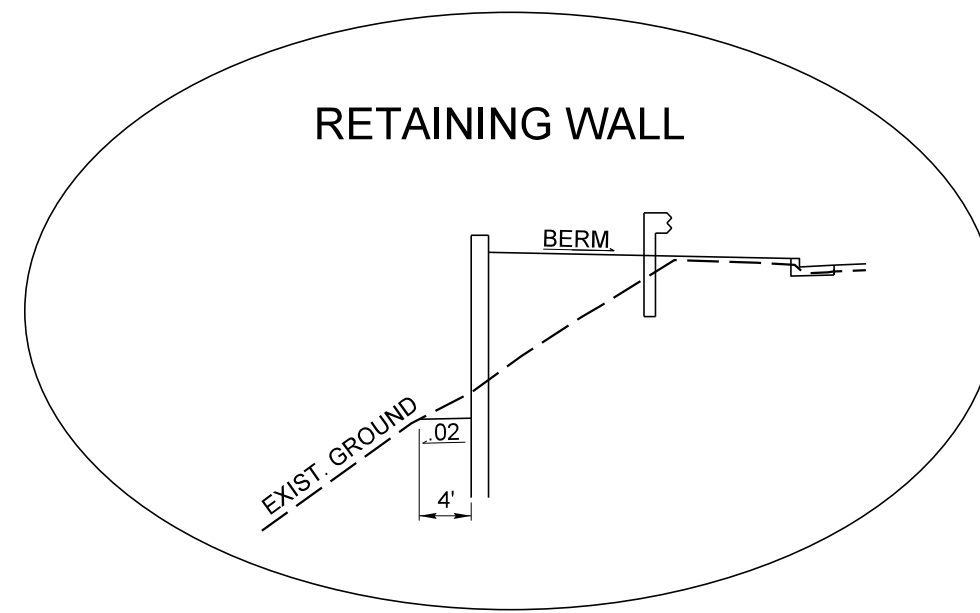
**ROADWAY TYPICAL SECTION NO. 2**

**USE TYPICAL SECTION NO. 2:**

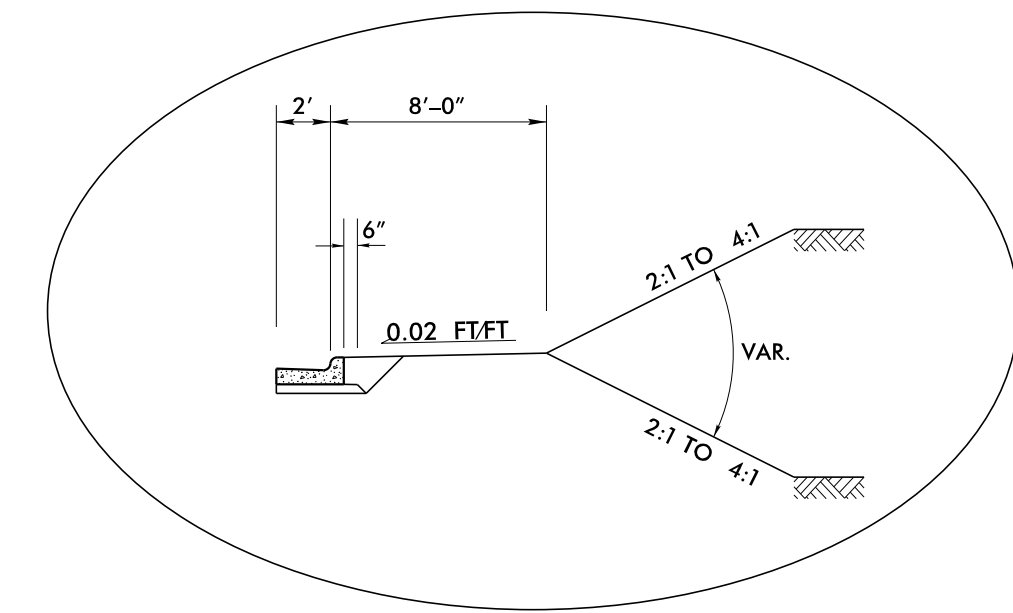
- L- STA 10+00.00 TO 12+50.00



**DETAIL A**  
USE IN CONJUNCTION WITH TYPICAL SECTION NO. 1  
-L- STA 23+50.00+/- TO 28+67.00+/- CL



**DETAIL B**  
USE IN CONJUNCTION WITH TYPICAL SECTION NO. 1  
-L- STA 12+50.00 TO 16+61.72 (LT)



**DETAIL C**  
USE IN CONJUNCTION WITH TYPICAL SECTION NO. 1  
-L- STA 12+50.00 TO 14+22.00 (RT)

FINAL PAVEMENT SCHEDULE	
C1	PROP. APPROX. 1 1/2" ASPHALT CONCRETE SURFACE COURSE, TYPE S9.5B AT AN AVERAGE RATE OF 165 LBS. PER SQ. YD.
C2	PROP. APPROX. 3" ASPHALT CONCRETE SURFACE COURSE, TYPE S9.5B, AT AN AVERAGE RATE OF 165 LBS. PER SQ. YD. IN EACH OF TWO LAYERS
C3	PROP. VAR. DEPTH ASPHALT CONCRETE SURFACE COURSE, TYPE S9.5B, AN AVERAGE RATE OF 110 LBS. PER SQ. YD. PER 1" DEPTH. TO BE PLACED IN LAYERS NOT TO EXCEED 1 1/2" IN DEPTH
D1	PROP. APPROX. 4" ASPHALT CONCRETE BINDER COURSE, TYPE I19.0C, AT AN AVERAGE RATE OF 456 LBS. PER SQ. YD.
D2	PROP. VAR. DEPTH ASPHALT CONCRETE BINDER COURSE, TYPE I19.0C, AT AN AVERAGE RATE OF 114 LBS. PER SQ. YD. PER 1" DEPTH, TO BE PLACED IN LAYERS NOT LESS THAN 2 1/2" IN DEPTH OR GREATER THAN 4" IN DEPTH.
E1	PROP. APPROX. 4" ASPHALT CONCRETE BASE COURSE, TYPE B25.0C, AT AN AVERAGE RATE OF 456 LBS. PER SQ. YD.
E2	PROP. VAR. DEPTH ASPHALT CONCRETE BASE COURSE, TYPE B25.0C, AT AN AVERAGE RATE OF 114 LBS. PER SQ. YD. PER 1" DEPTH. TO BE PLACED IN LAYERS NOT LESS THAN 3" IN DEPTH OR GREATER THAN 5 1/2" IN DEPTH.
J	PROP. 8" AGGREGATE BASE COURSE
P	PRIME COAT AT THE RATE OF .35 GAL PER SQ YARD
R1	2'-6" CONCRETE CURB AND GUTTER
R2	5" MONOLITHIC CONCRETE ISLAND (KEYED IN)
S	4" CONCRETE SIDEWALK
T	EARTH MATERIAL
U	EXISTING PAVEMENT
V1	INCIDENTAL MILLING
V2	1 1/2" MILLING
W	WEDGING (SEE DETAIL SHOWING METHOD OF WEDGING ON THIS SHEET.)

NOTE: PAVEMENT EDGE SLOPES ARE 1:1 UNLESS SHOWN OTHERWISE.