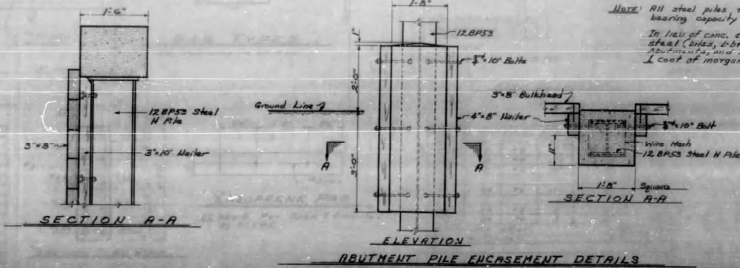


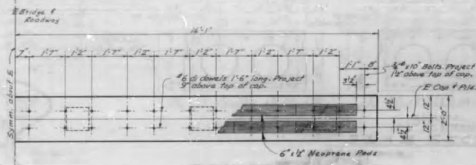
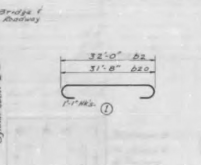
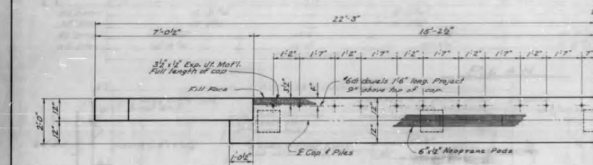
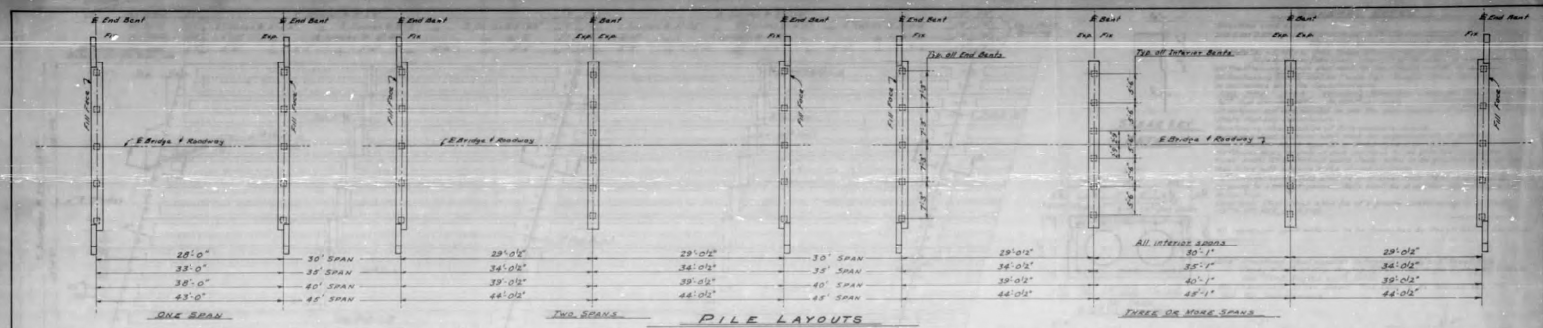
ABUTMENT DIMENSIONS			
H	A	B	C
6'-0"	5'-0"	4'-4"	2'-6"
7'-0"	6'-0"	5'-4"	3'-6"
8'-0"	7'-0"	6'-4"	4'-6"
9'-0"	8'-0"	7'-4"	5'-6"
10'-0"	9'-0"	8'-4"	6'-6"



NOTE: All steel piles to be driven to a minimum bearing capacity of 30 tons each.
 In full of concrete encasements shown, all substructure steel (chairs, bracing, caps, etc.) are cast in place.
 75% minimum and 20% maximum piles may be prestressed with 1 coat of organic zinc & 2 coats of coal tar epoxy.

STANDARD AND-1958-23-90
 BRIDGE MAINTENANCE DEPARTMENT
 N.C. STATE HIGHWAY DIVISION
 RALEIGH, N.C.

SUBSTRUCTURE DETAILS
 PRESTRESSED CORED
 SLAB SUPERSTRUCTURE
 30'-35'-40'-45' SPANS
 25'± CLEAR ROADWAY



NOTE

12 #3 Steel Piles may be used in lieu of the 24 #16 Prestressed Concrete Piles as indicated on plan.

All piles to be driven to a minimum bearing capacity of 25 Tons each.

Pile embedment has not been deducted from concrete quantities.

See Standard 1932-29-90 for cage bracing of steel piles where indicated in plan. For cage bracing of steel piles where indicated in plan, for only concrete shall pile, that bent, and for steel pile embedment details.

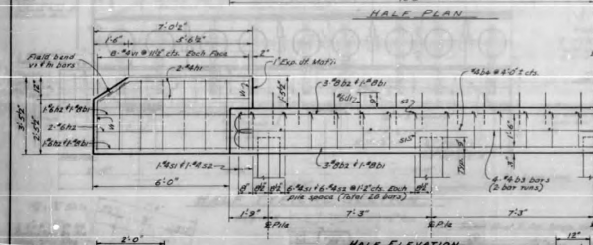


TABLE OF MATERIAL FOR (I) END BENT

NO.	QTY	SIZE	LENGTH	WEIGHT
B1	2	#8	24'-0"	33.5
B2	6	#8	24'-0"	24.5
B3	6	#8	12'-0"	8.5
B4	8	#8	7'-8"	9
C1	12	#6	1'-6"	5.0
H1	8	#8	6'-0"	36
H2	8	#6	8'-0"	36
S1	28	#4	2'-9"	11.8
S2	28	#4	2'-5"	10.5
S3	28	#4	3'-7"	15.0
Reinforcing Steel				181.8
Class "A" Concrete				6.2 cu. yds.

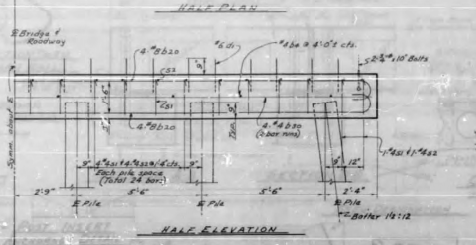


TABLE OF MATERIAL FOR (II) INTERIOR BENT

NO.	QTY	SIZE	LENGTH	WEIGHT
B10	8	#4	33'-10"	22.8
B20	8	#8	16'-7"	8.5
B4	8	#8	7'-8"	9
C1	48	#6	1'-6"	9.0
S1	24	#4	2'-9"	11.8
S2	24	#4	2'-5"	10.5
Reinforcing Steel				107.1
Class "A" Concrete				6.8 cu. yds.

SECTION THRU CAP

SECTION THRU WING

SUBSTRUCTURE DETAILS FOR PRESTRESSED CORED SLAB SUPERSTRUCTURE 30'-35'-40'-45' SPANS 29'-2" CLEAR ROADWAY