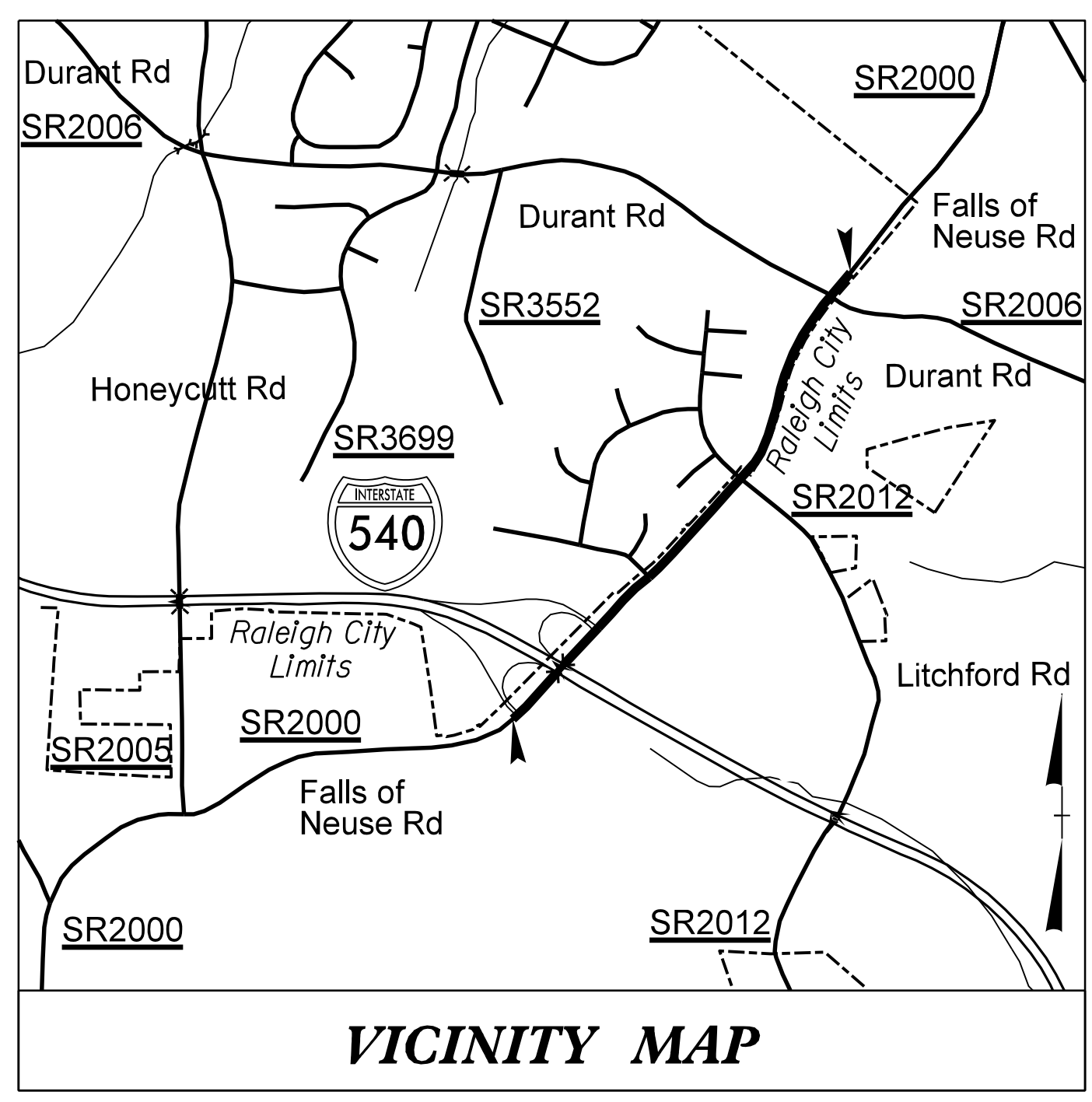


09.08/99
 22-AUG-2022 10:31
 MA\2013\213335\03 NCDOT U-5826 Falls of the Neuse Rd\Utilities\290_00\U-5826_ut_tsh_U001_psh.dgn
 \$\$\$SERVERNAME\$\$\$

TIP PROJECT: U-5826

CONTRACT: C204380



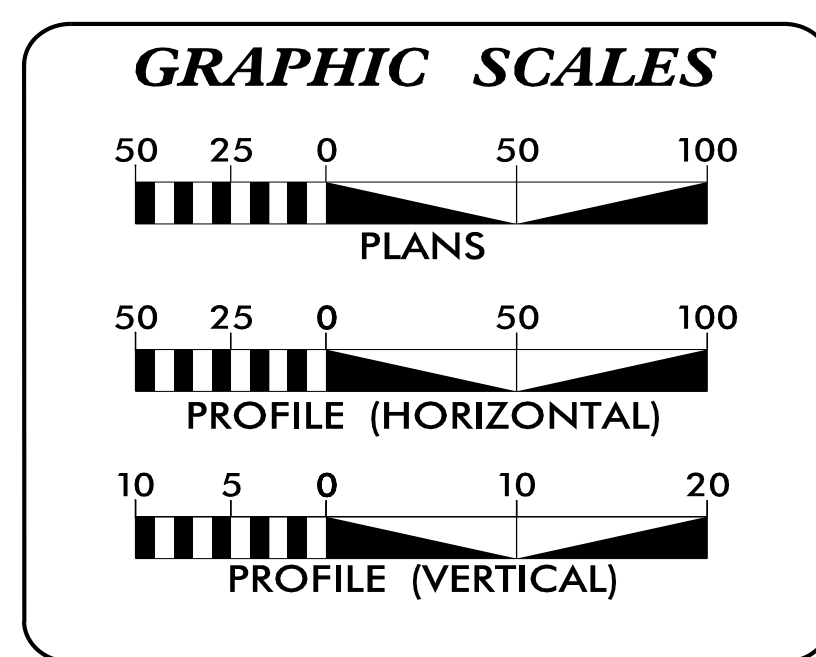
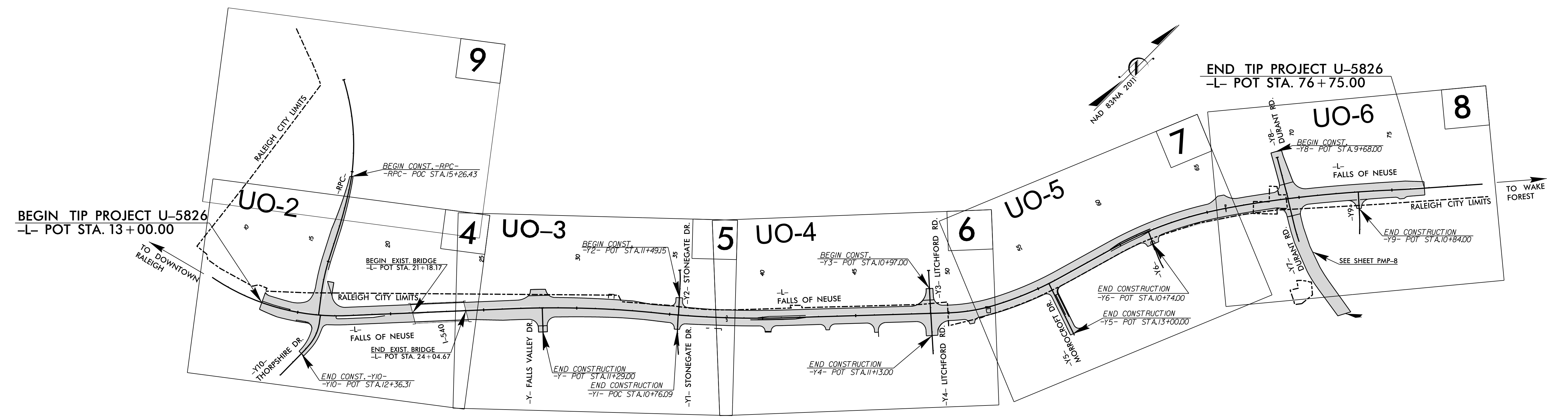
STATE OF NORTH CAROLINA
DIVISION OF HIGHWAYS

**UTILITIES BY OTHERS PLANS
WAKE COUNTY**

**LOCATION: U-5826 FALLS OF NEUSE ROAD (SR 2000)
 FROM I-540 TO DURANT ROAD (SR 2006)**
**TYPE OF WORK: AERIAL/BURIED POWER (DISTRIBUTION)
 AERIAL/BURIED COMMUNICATION**

T.I.P. NO.	SHEET NO.
U-5826	UO-1

NOTE:
 ALL UTILITY WORK SHOWN ON THIS SHEET WILL BE DONE BY OTHERS. NO PAYMENT WILL BE MADE TO THE CONTRACTOR FOR UTILITY WORK SHOWN ON THIS SHEET.



INDEX OF SHEETS

SHEET NO.:	DESCRIPTION:
UO-1	TITLE SHEET
UO-2 THRU UO-6	UBO PLAN SHEETS

- UTILITY OWNERS WITH CONFLICTS**
- (A) DUKE ENERGY - POWER (DISTRIBUTION)
 - (B) CITY OF RALEIGH - FIBER /ITS
 - (C) CHARTER /SPECTRUM - COMMUNICATIONS
 - (D) VERIZON BUSINESS /MCI - COMMUNICATIONS
 - (E) AT&T - COMMUNICATIONS
 - (F) DOMINION ENERGY - GAS

PREPARED IN THE OFFICE OF:

KCI ASSOCIATES OF N.C., P.A.
 4505 FALLS OF NEUSE RD, SUITE 400
 RALEIGH, NC 27609
 Phone (919) 783-9214
 Fax (919) 783-9266

JOHN FAISON	UTILITY PROJECT MANAGER
JOHN FAISON	PROJECT UTILITY COORDINATOR
DANIEL ALLEN	PROJECT UTILITY DESIGNER

**DIVISION OF HIGHWAYS
 DIVISION 5**

PROJECT DELIVERY UNIT
 815 STADIUM DRIVE
 DURHAM, NC 27704

BETH QUINN, PE	TEAM LEAD
S. REID DAVIDSON, PE	DDC ENGINEER
DON PROPER	DIV. UTILITIES ENGINEER
MONROE BROWN	DIVISION COORDINATOR

UTILITIES BY OTHERS

NOTE:
CITY OF RALEIGH FIBER/ ITS TO BE TRANSFERRED TO NEW POLE LINE PRIOR TO THE DATE OF AVAILABILITY.

NOTE:
ALL PROPOSED UTILITY WORK SHOWN ON THIS SHEET WILL BE DONE BY OTHERS. NO PAYMENT WILL BE MADE TO THE CONTRACTOR FOR PROPOSED UTILITY WORK SHOWN ON THIS SHEET.

DOMINION ENERGY TO VERIFY CONFLICT AND TO ADJUST IF NEEDED.

CHARTER/ SPECTRUM, VERIZON BUSINESS/ MCI, AND NCDOT FIBER TO ATTACH TO EXISTING DUKE POLES

DUKE ENERGY TO ABANDON

AT&T TO ADJUST BURIED CABLE TO AVOID PROPOSED DRAINAGE

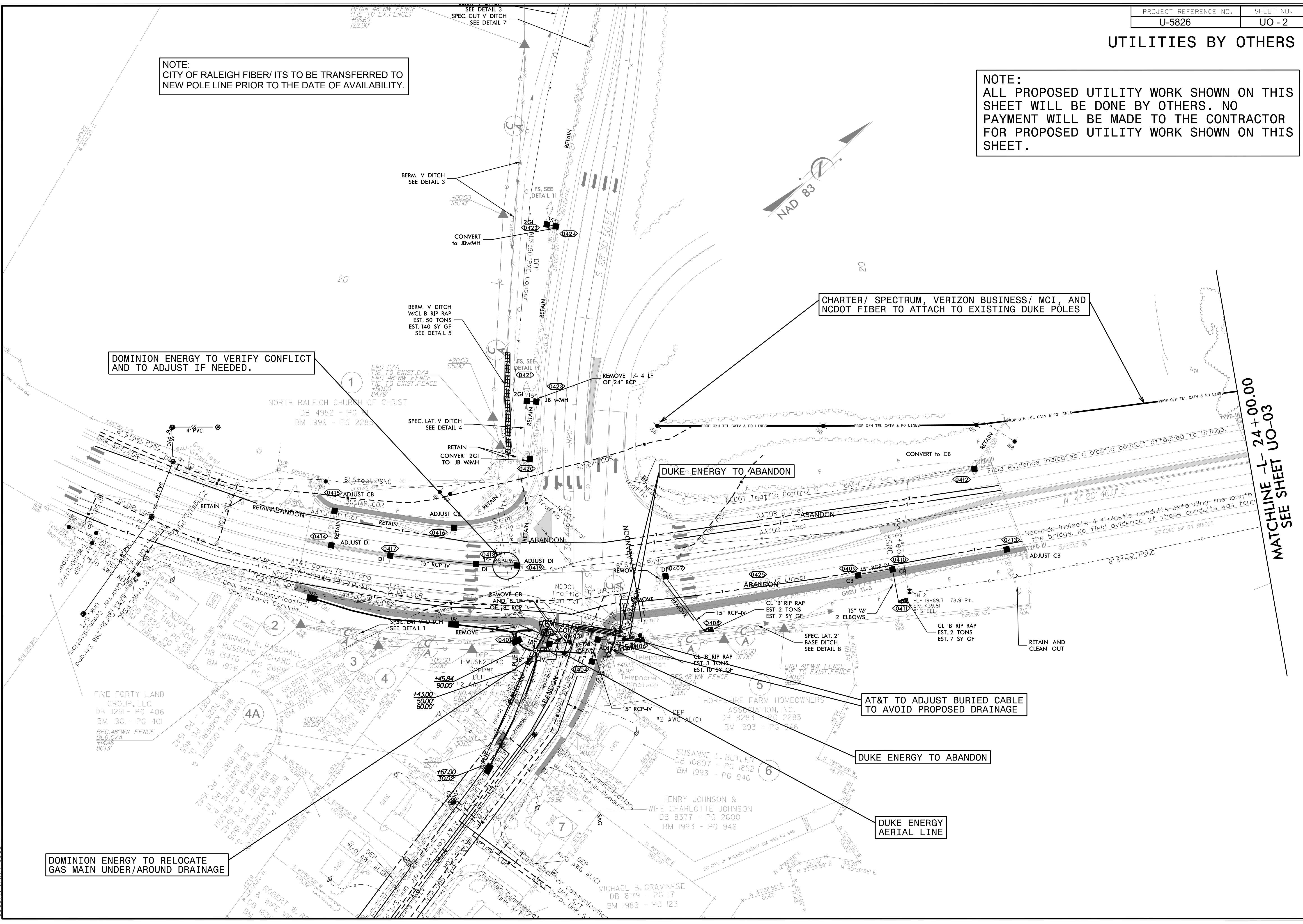
DUKE ENERGY TO ABANDON

DUKE ENERGY AERIAL LINE

DOMINION ENERGY TO RELOCATE GAS MAIN UNDER/AROUND DRAINAGE

MATCHLINE L-24+00.00 SEE SHEET UO-03

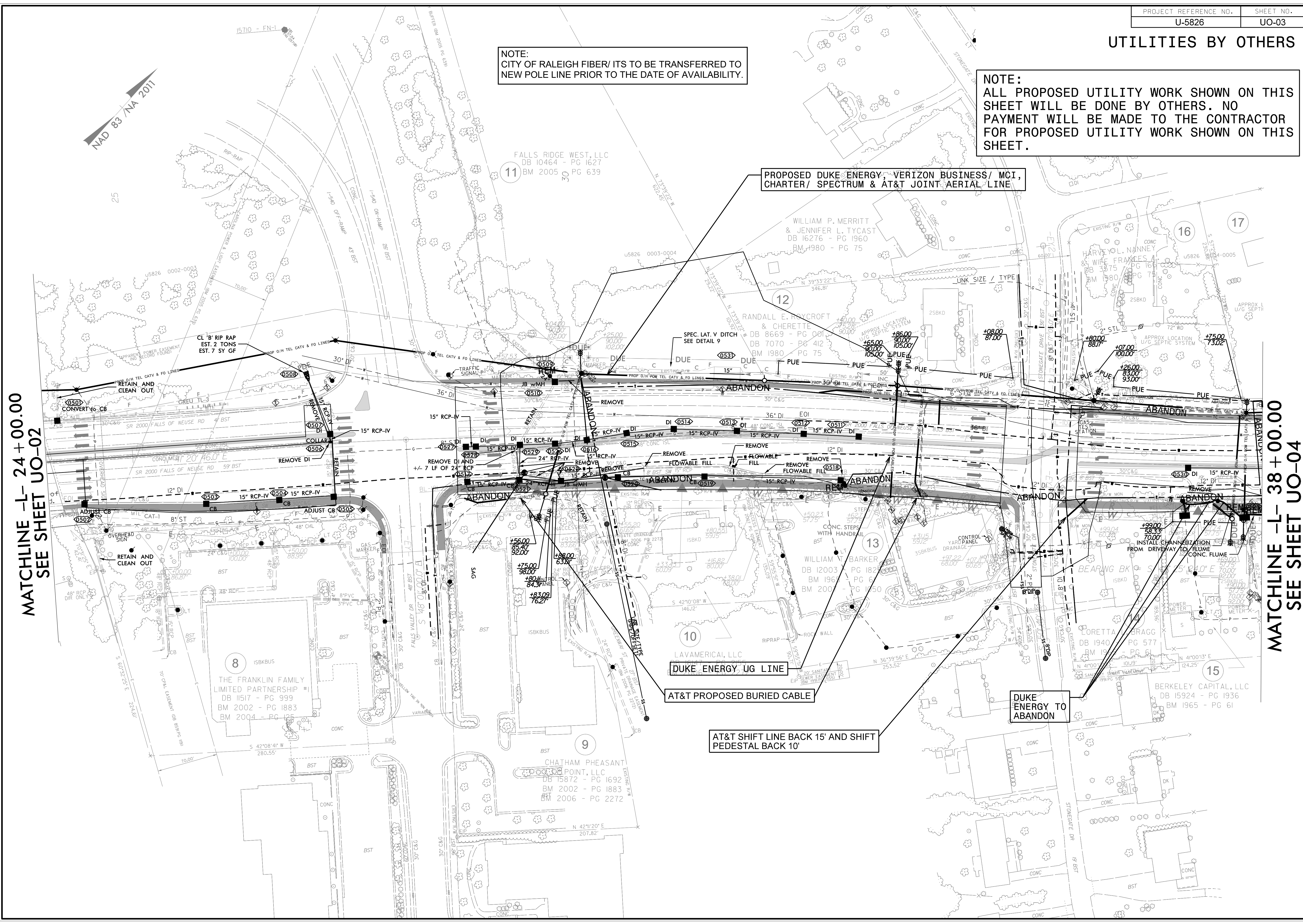
10-MAY-2022 15:09 N:\2013\213335\5.03 NCDOT U-5826 Falls of the Neuse Rd\Utilities\290_002_U-5826.ut_rdy02-U002-psd.dgn



UTILITIES BY OTHERS

NOTE:
CITY OF RALEIGH FIBER/ ITS TO BE TRANSFERRED TO
NEW POLE LINE PRIOR TO THE DATE OF AVAILABILITY.

NOTE:
ALL PROPOSED UTILITY WORK SHOWN ON THIS
SHEET WILL BE DONE BY OTHERS. NO
PAYMENT WILL BE MADE TO THE CONTRACTOR
FOR PROPOSED UTILITY WORK SHOWN ON THIS
SHEET.



MATCHLINE -L- 24+00.00
SEE SHEET UO-02

MATCHLINE -L- 38+00.00
SEE SHEET UO-04

PROPOSED DUKE ENERGY, VERIZON BUSINESS/ MCI,
CHARTER/ SPECTRUM & AT&T JOINT AERIAL LINE

DUKE ENERGY UG LINE

AT&T PROPOSED BURIED CABLE

AT&T SHIFT LINE BACK 15' AND SHIFT
PEDESTAL BACK 10'

DUKE ENERGY TO
ABANDON

CL 'B' RIP RAP
EST. 2 TONS
EST. 7 SY GF

MATCHLINE -L- 24+00.00
SEE SHEET UO-02

MATCHLINE -L- 38+00.00
SEE SHEET UO-04

UTILITIES BY OTHERS

NOTE:
CITY OF RALEIGH FIBER/ ITS TO BE TRANSFERRED TO NEW POLE LINE PRIOR TO THE DATE OF AVAILABILITY.

NOTE:
ALL PROPOSED UTILITY WORK SHOWN ON THIS SHEET WILL BE DONE BY OTHERS. NO PAYMENT WILL BE MADE TO THE CONTRACTOR FOR PROPOSED UTILITY WORK SHOWN ON THIS SHEET.

DOMINION ENERGY TO RELOCATE 8" STEEL GAS MAIN UNDER/AROUND PROPOSED DRAIN PIPE?
PIPE WAS RELOCATED IN 2002 FOR EXISTING 18" RCP. IF NEW 24" RCP IS NOT BEING INSTALLED, THEN THE 18" RCP SHOULD NOT BE IN CONFLICT.

PROPOSED AT&T BURIED LINE & HANDHOLE TO TIE INTO AERIAL LINE

PROPOSED AT&T BURIED LINE TO REPLACE EXISTING CROSSING LINE NOT SHOWN IN FINAL SURVEY

DO NOT DISTURB TREES

PROPOSED AT&T TO ATTACH

PROPOSED DUKE ENERGY, VERIZON BUSINESS/ MCI, & CHARTER/ SPECTRUM JOINT AERIAL LINE

VERIZON BUSINESS/ MCI TO RELOCATE TO NEW POLES

EXISTING BURIED AT&T FACILITIES IN THIS AREA TO REMAIN IN PLACE

VERIZON BUSINESS/ MCI EXISTING UNDERGROUND LINE TO REMAIN IN PLACE

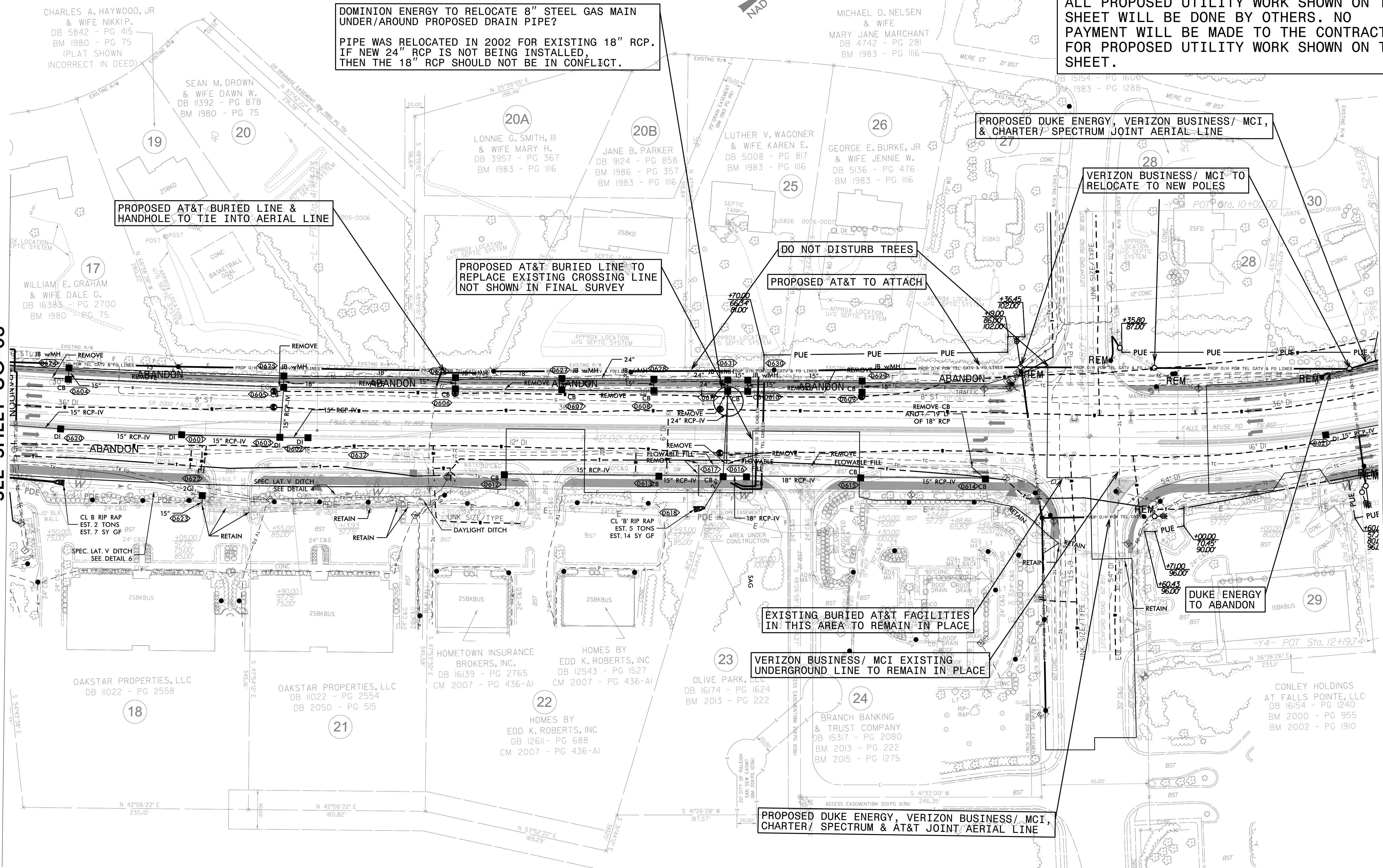
DUKE ENERGY TO ABANDON

PROPOSED DUKE ENERGY, VERIZON BUSINESS/ MCI, CHARTER/ SPECTRUM & AT&T JOINT AERIAL LINE

**MATCHLINE -L- 38 +00.00
SEE SHEET UO-03**

**MATCHLINE -L- 52 +00.00
SEE SHEET UO-05**

8/17/99
 10-MAY-2022 15:33
 M:\2013\213395\03 NCDOT U-5826 Falls of the Neuse Rd\Utilities\210_004_U-5826.ut_rdy04_U004_pah.dgn
 USER:SERNAME



UTILITIES BY OTHERS

NOTE:
CITY OF RALEIGH FIBER/ ITS TO BE TRANSFERRED TO
NEW POLE LINE PRIOR TO THE DATE OF AVAILABILITY.

NOTE:
ALL PROPOSED UTILITY WORK SHOWN ON THIS
SHEET WILL BE DONE BY OTHERS. NO
PAYMENT WILL BE MADE TO THE CONTRACTOR
FOR PROPOSED UTILITY WORK SHOWN ON THIS
SHEET.

SEPTIC DRAIN FIELD LOCATION IS APPROXIMATE.
THE CONTRACTOR SHALL FIELD LOCATE DRAIN FIELD LINES
WITHIN THE EASEMENT AND PROTECT THEM FROM DAMAGE.

PROPOSED BURIED AT&T LINE
DOMINION ENERGY, VERIZON
BUSINESS/ MCI, CHARTER/ SPECTRUM
& AT&T JOINT AERIAL LINE

DOMINION ENERGY TO RELOCATE
8" STEEL GAS MAIN UNDER/AROUND
PROPOSED DRAIN PIPE

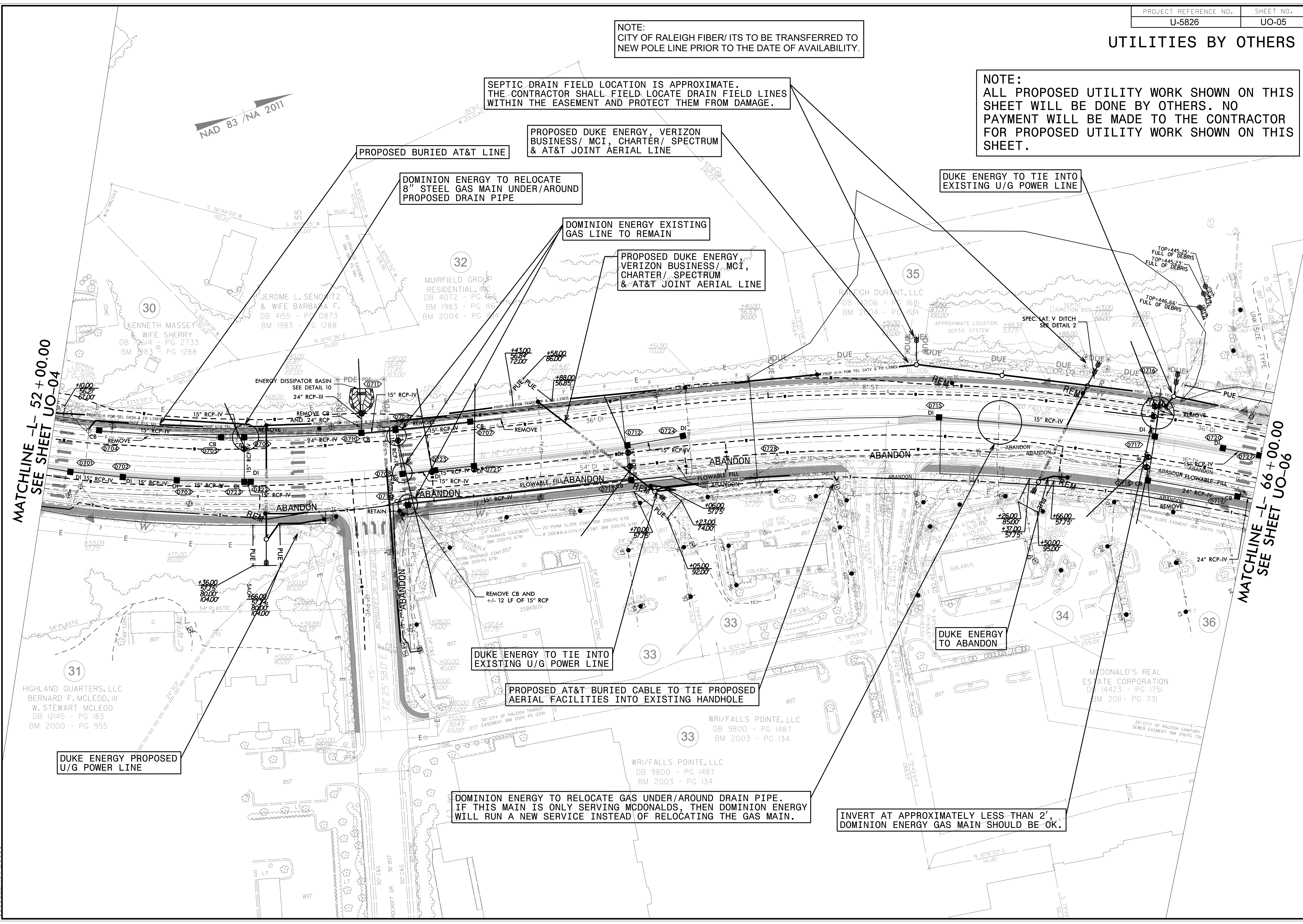
DUKE ENERGY TO TIE INTO
EXISTING U/G POWER LINE

DOMINION ENERGY EXISTING
GAS LINE TO REMAIN

PROPOSED DUKE ENERGY,
VERIZON BUSINESS/ MCI,
CHARTER/ SPECTRUM
& AT&T JOINT AERIAL LINE

MATCHLINE -L- 52 + 00.00
SEE SHEET UO-04

MATCHLINE -L- 66 + 00.00
SEE SHEET UO-06



DUKE ENERGY TO TIE INTO
EXISTING U/G POWER LINE

PROPOSED AT&T BURIED CABLE TO TIE PROPOSED
AERIAL FACILITIES INTO EXISTING HANDHOLE

DUKE ENERGY
TO ABANDON

DOMINION ENERGY TO RELOCATE GAS UNDER/AROUND DRAIN PIPE.
IF THIS MAIN IS ONLY SERVING MCDONALDS, THEN DOMINION ENERGY
WILL RUN A NEW SERVICE INSTEAD OF RELOCATING THE GAS MAIN.

INVERT AT APPROXIMATELY LESS THAN 2',
DOMINION ENERGY GAS MAIN SHOULD BE OK.

DUKE ENERGY PROPOSED
U/G POWER LINE

10-MAY-2022 15:36
 M:\2013\213335\03 NCDOT U-5826 Falls of the Neuse Rd\Utilities\210_005_U-5826.ut_rdy05-U005-pah.dgn
 8/17/99

UTILITIES BY OTHERS

NOTE:
CITY OF RALEIGH FIBER/ ITS TO BE TRANSFERRED TO
NEW POLE LINE PRIOR TO THE DATE OF AVAILABILITY.

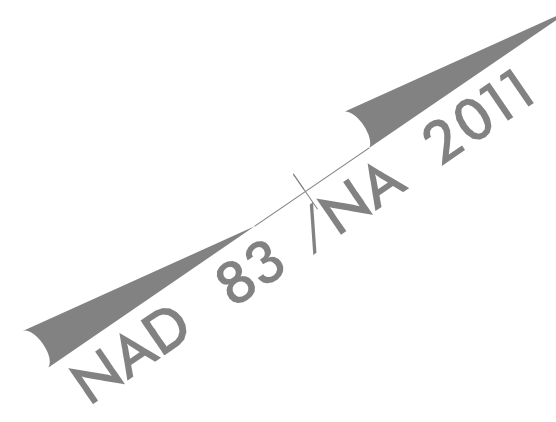
NOTE:
ALL PROPOSED UTILITY WORK SHOWN ON THIS
SHEET WILL BE DONE BY OTHERS. NO
PAYMENT WILL BE MADE TO THE CONTRACTOR
FOR PROPOSED UTILITY WORK SHOWN ON THIS
SHEET.

PROPOSED DUKE ENERGY, VERIZON BUSINESS/ MCI,
CHARTER/ SPECTRUM & AT&T JOINT AERIAL LINE

PROPOSED AT&T BURIED CONDUIT
TO TIE PROPOSED AERIAL FACILITIES
INTO EXISTING BURIED LINES

PROPOSED DUKE ENERGY, AT&T,
& CHARTER/ SPECTRUM JOINT AERIAL LINE

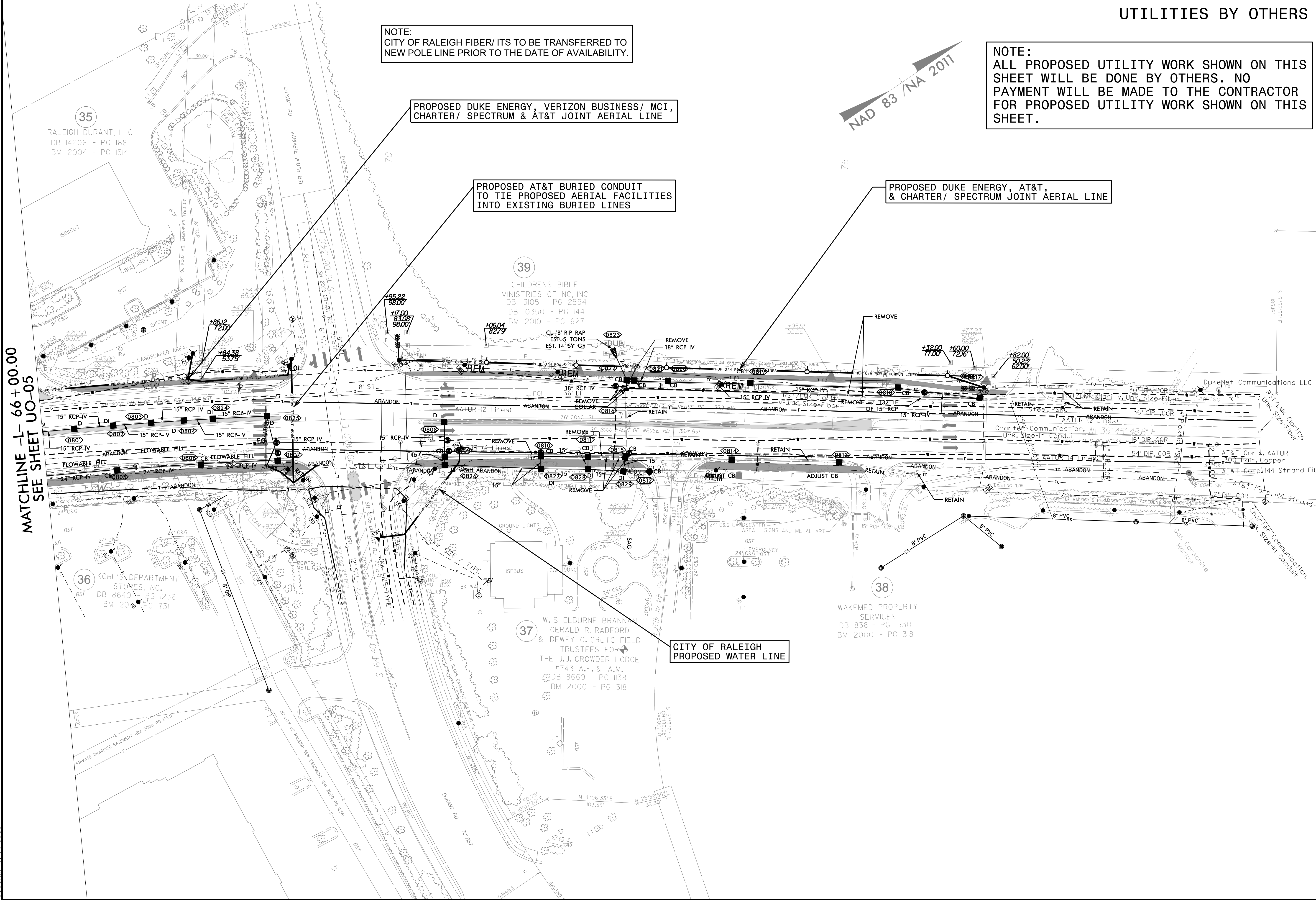
CITY OF RALEIGH
PROPOSED WATER LINE



MATCHLINE -L- 66 + 00.00
SEE SHEET UO-05

10-MAY-2022 15:40 M:\2013\2133395_03 NCDOT U-5826 Falls of the Neuse Rd\Utilities\210_006_U-5826.ut_rdy06-U006_psh.dgn

8/17/99



35
RALEIGH DURANT, LLC
DB 14206 - PG 1681
BM 2004 - PG 1514

39
CHILDRENS BIBLE
MINISTRIES OF NC, INC
DB 13105 - PG 2594
DB 10350 - PG 144
BM 2010 - PG 627

36
KOHL'S DEPARTMENT
STORES, INC.
DB 8640 - PG 1236
BM 2000 - PG 731

37
W. SHELburne BRANNAN
GERALD R. RADFORD
& DEWEY C. CRUTCHFIELD
TRUSTEES FOR
THE J.J. CROWDER LODGE
#743 A.F. & A.M.
DB 8669 - PG 1138
BM 2000 - PG 318

38
WAKEMED PROPERTY
SERVICES
DB 8381 - PG 1530
BM 2000 - PG 318

DukeNet Communications LLC
Unk. LMK Cority-Fiber
Unk. Size-Fiber

Charter Communication, Unk. Size-In Conduit
AT&T Corp. AATUR
AT&T Corp. 144 Strand-Fib
AT&T Corp. 144 Strand-Fib
Charter Communication, Unk. Size-In Conduit