

SITE PERMITTING APPROVAL

Water and Sewer Permits (if applicable)

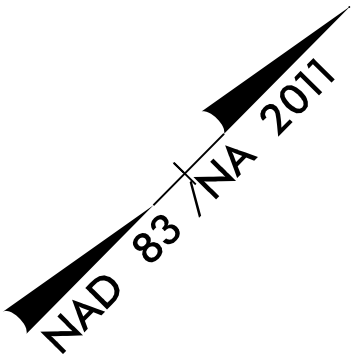
The City of Raleigh consents to the connection and extension of the City's Public Water System as shown on this plan. The material and construction methods used for this project shall conform to the standards and specifications of the City's Public Utilities Handbook, City of Raleigh Public Utilities Department Form # 30-322.

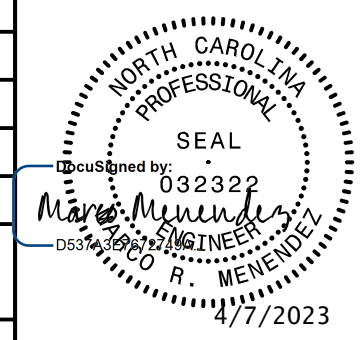
CITY OF RALEIGH - PLANS AUTHORIZED FOR CONSTRUCTION

Electronic Approval: This approval is being issued electronically. This approval is valid only upon the signature of a City of Raleigh Review Officer below. The City will retain a copy of the approved plans. Any work authorized by this approval must proceed in accordance with the plans kept on file with the City. This electronic approval may not be edited once issued. Any modification to this approval once issued will invalidate this approval.

City of Raleigh Development Approval _____

Raleigh Water Review Officer Rene Haagen

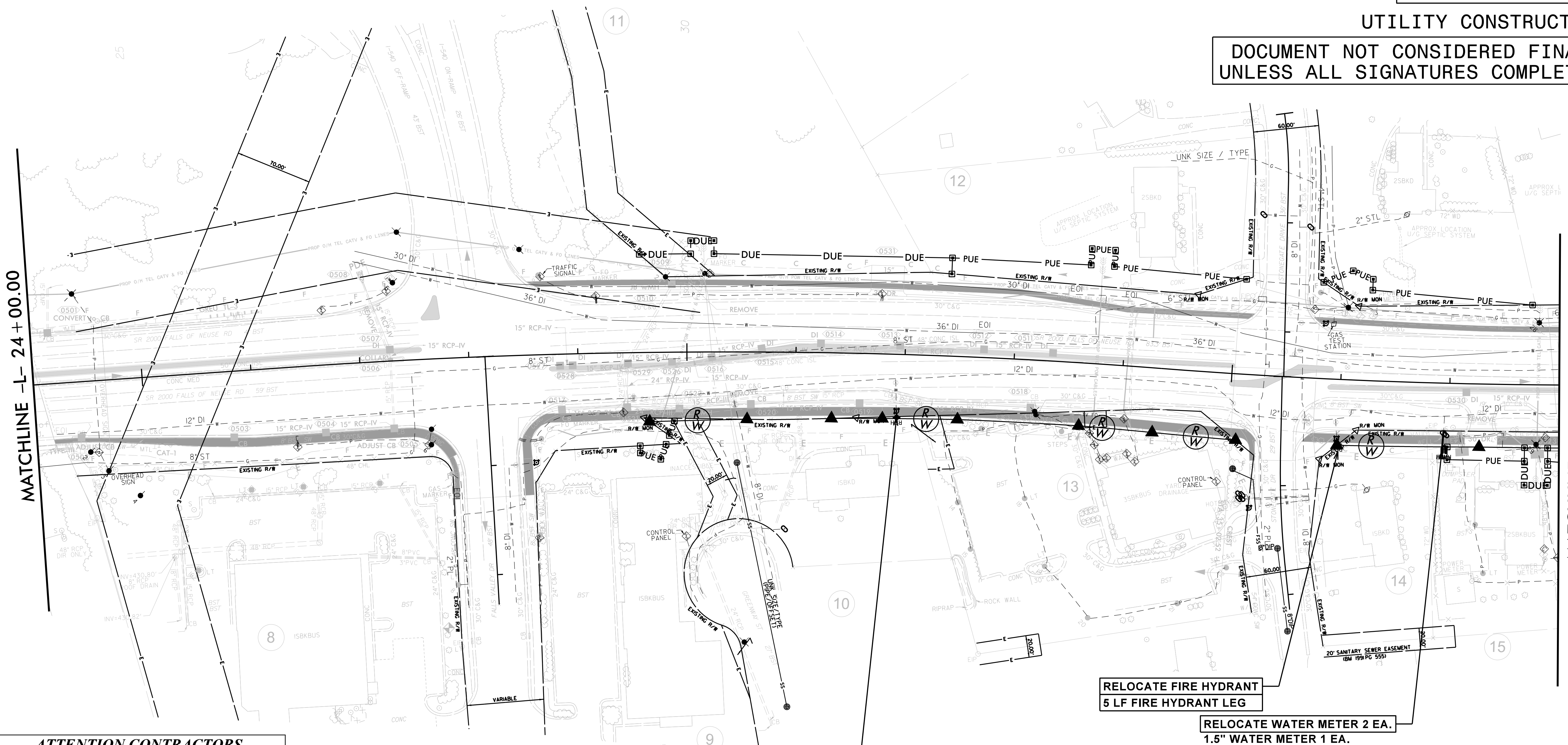


PROJECT REFERENCE NO. U-5826	SHEET NO. UC-4
DESIGNED BY: CS	
DRAWN BY: CS	
CHECKED BY: MM	
APPROVED BY:	
REVISED:	NORTH CAROLINA DEPARTMENT OF TRANSPORTATION UTILITIES ENGINEERING SECTION PHONE: (919) 707-6690 FAX: (919) 250-4151
UTILITY CONSTRUCTION PLANS ONLY	

Engineers • Planners • Scientists • Construction Managers
 4505 Falls of Neuse Road, Suite 400
 Raleigh, NC 27609
 Phone (919) 783-9214 • Fax (919) 783-9266
 License No. C-764

UTILITY CONSTRUCTION

DOCUMENT NOT CONSIDERED FINAL UNLESS ALL SIGNATURES COMPLETED



MATCHLINE - L- 24 + 00.00

MATCHLINE - L- 38 + 00.00 SEE SHEET UC-5

ATTENTION CONTRACTORS

The **Construction Contractor** responsible for the extension of water, sewer, and/or reuse, as approved in these plans, is responsible for contacting the **Public Works Department** at (919) 996-2409, and the **Public Utilities Department** at (919) 996-4540 at least **twenty four hours** prior to beginning any of their construction.

Failure to notify both **City Departments** in advance of beginning construction, will result in the issuance of **monetary fines**, and require reinstallation of any water or sewer facilities not inspected as a result of this notification failure.

Failure to call for **Inspection, Install a Downstream Plug**, have **Permitted Plans** on the **Jobsite**, or any other **Violation of City of Raleigh Standards** will result in a **Fine and Possible Exclusion** from future work in the **City of Raleigh**.

RELOCATE FIRE HYDRANT
7 LF FIRE HYDRANT LEG

RELOCATE FIRE HYDRANT
5 LF FIRE HYDRANT LEG

RELOCATE WATER METER 2 EA.
 1.5" WATER METER 1 EA.
 5/8" WATER METER 1 EA.
 1.5" WATER SERVICE LINE 25 LF
 5/8" WATER SERVICE LINE 4 LF