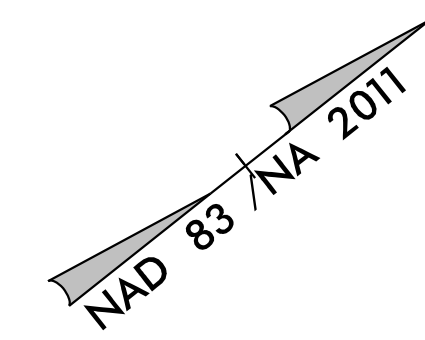
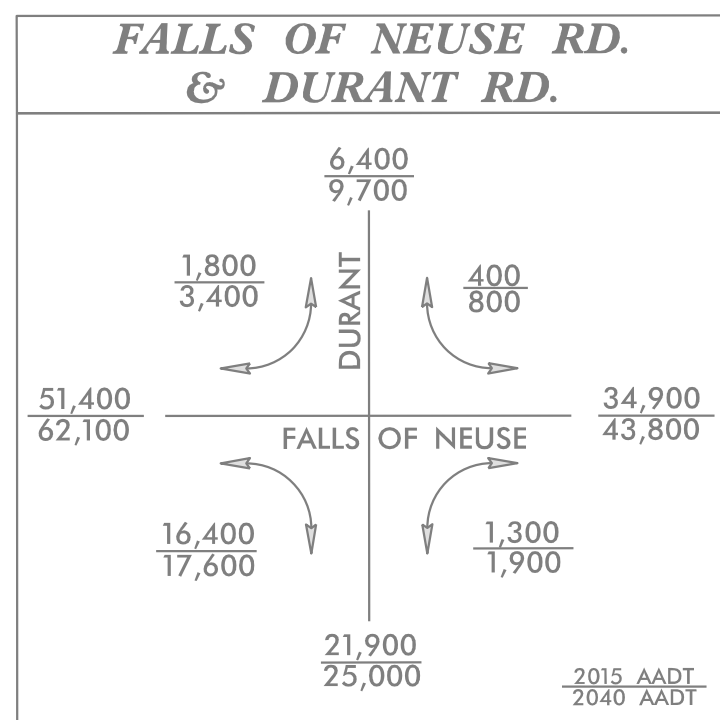


PROJECT REFERENCE NO.	SHEET NO.
U-5826	EC-14/CONST.08
RW SHEET NO.	
ROADWAY DESIGN ENGINEER	HYDRAULICS ENGINEER

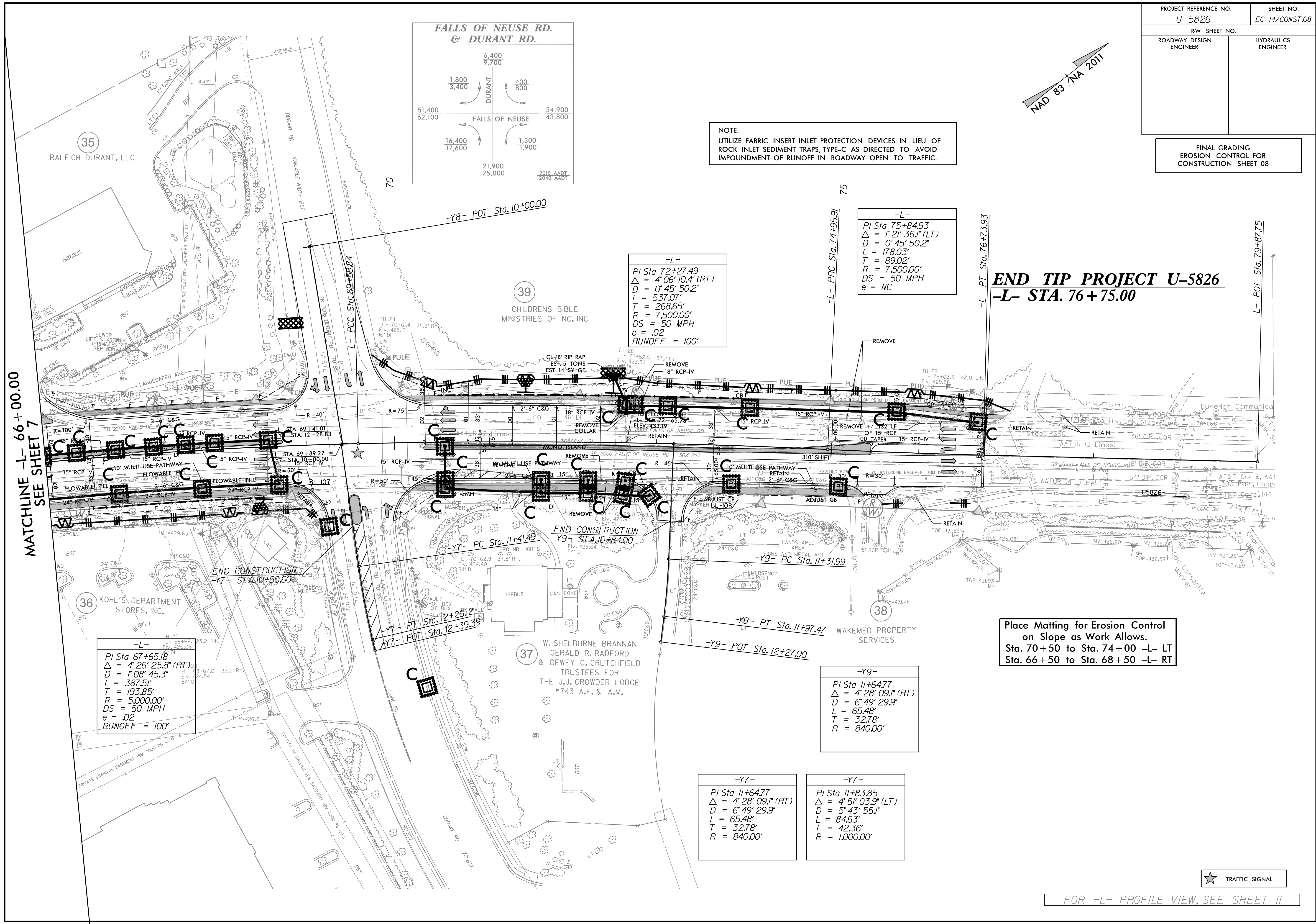


FINAL GRADING
EROSION CONTROL FOR
CONSTRUCTION SHEET 08



NOTE:
UTILIZE FABRIC INSERT INLET PROTECTION DEVICES IN LIEU OF
ROCK INLET SEDIMENT TRAPS, TYPE-C AS DIRECTED TO AVOID
IMPOUNDMENT OF RUNOFF IN ROADWAY OPEN TO TRAFFIC.

MATCHLINE -L- 66+00.00
SEE SHEET 7



-L-
PI Sta 72+27.49
Δ = 4'06" 10.4" (RT)
D = 0'45" 50.2"
L = 537.07'
T = 268.65'
R = 7,500.00'
DS = 50 MPH
e = .02
RUNOFF = 100'

-L-
PI Sta 75+84.93
Δ = 1'21" 36.1" (LT)
D = 0'45" 50.2"
L = 178.03'
T = 89.02'
R = 7,500.00'
DS = 50 MPH
e = NC

END TIP PROJECT U-5826
-L- STA. 76+75.00

-L-
PI Sta 67+65.18
Δ = 4'26" 25.8" (RT)
D = 1'08" 45.3"
L = 387.51'
T = 193.85'
R = 5,000.00'
DS = 50 MPH
e = .02
RUNOFF = 100'

-Y9-
PI Sta 11+64.77
Δ = 4'28" 09.1" (RT)
D = 6'49" 29.9"
L = 65.48'
T = 32.78'
R = 840.00'

-Y7-
PI Sta 11+64.77
Δ = 4'28" 09.1" (RT)
D = 6'49" 29.9"
L = 65.48'
T = 32.78'
R = 840.00'

-Y7-
PI Sta 11+83.85
Δ = 4'51" 03.9" (LT)
D = 5'43" 55.1"
L = 846.3'
T = 42.36'
R = 1,000.00'

Place Matting for Erosion Control
on Slope as Work Allows.
Sta. 70+50 to Sta. 74+00 -L- LT
Sta. 66+50 to Sta. 68+50 -L- RT



FOR -L- PROFILE VIEW, SEE SHEET 11