

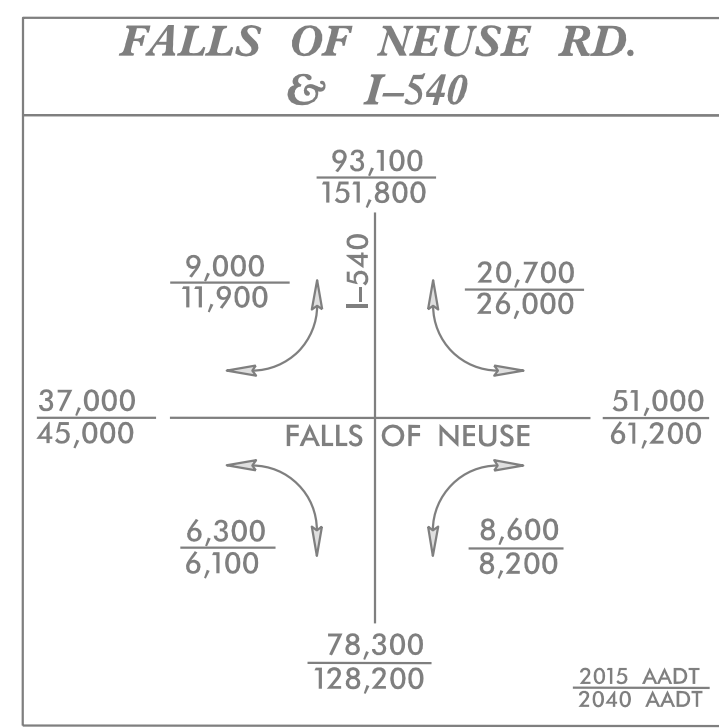
PROJECT REFERENCE NO. U-5826	SHEET NO. EC-10/CONST.04
RW SHEET NO.	
ROADWAY DESIGN ENGINEER	HYDRAULICS ENGINEER

FINAL GRADING
EROSION CONTROL FOR
CONSTRUCTION SHEET 04

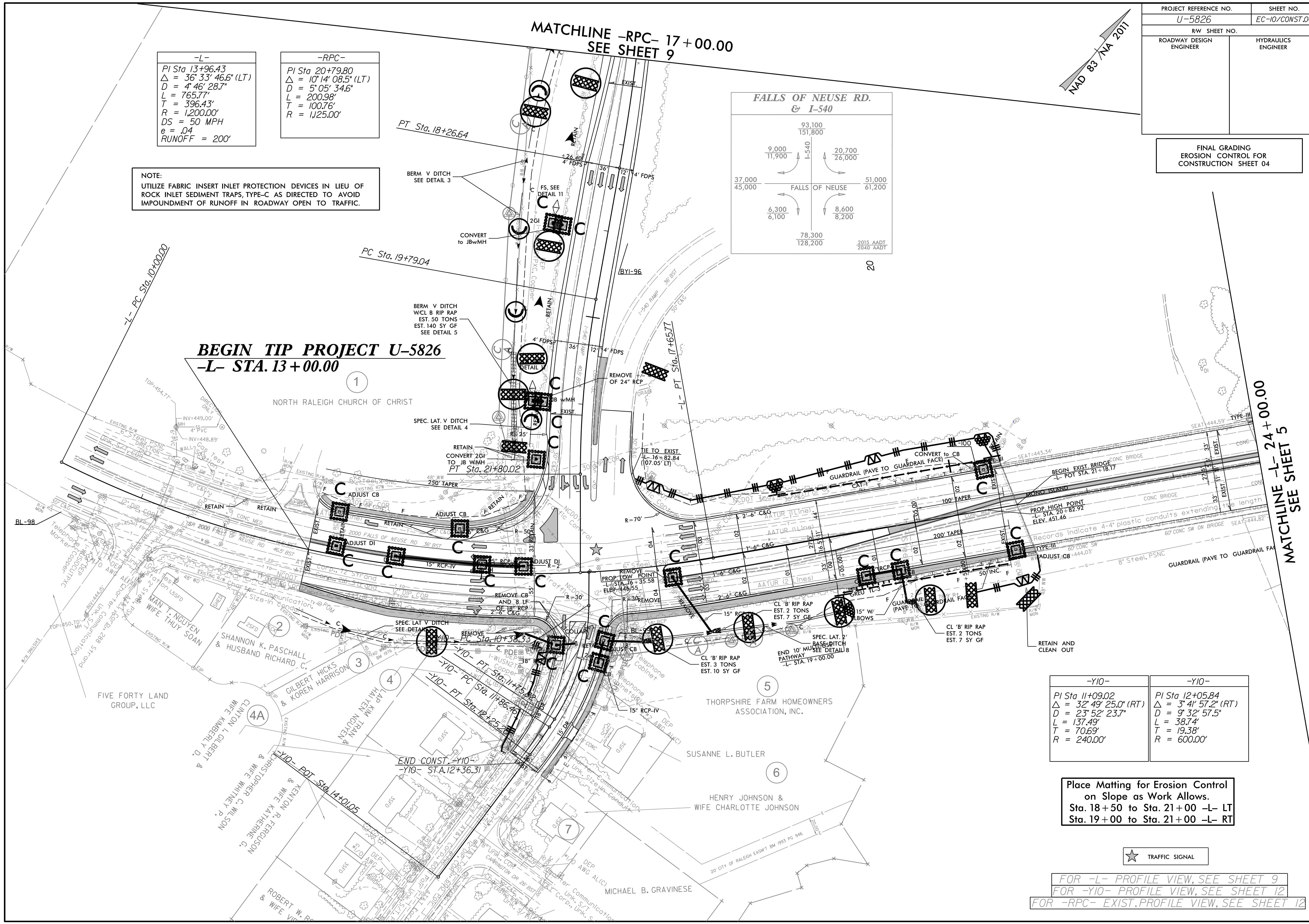
-L-
PI Sta 13+96.43
$\Delta = 36' 33" 46.6" (LT)$
$D = 4' 46" 28.7"$
$L = 765.77'$
$T = 396.43'$
$R = 1,200.00'$
$DS = 50 MPH$
$e = .04$
$RUNOFF = 200'$

-RPC-
PI Sta 20+79.80
$\Delta = 10' 14" 08.5" (LT)$
$D = 5' 05" 34.6"$
$L = 200.98'$
$T = 100.76'$
$R = 1,125.00'$

NOTE:
UTILIZE FABRIC INSERT INLET PROTECTION DEVICES IN LIEU OF ROCK INLET SEDIMENT TRAPS, TYPE-C AS DIRECTED TO AVOID IMPOUNDMENT OF RUNOFF IN ROADWAY OPEN TO TRAFFIC.



BEGIN TIP PROJECT U-5826
-L- STA. 13+00.00



-Y10-	-Y10-
PI Sta 11+09.02	PI Sta 12+05.84
$\Delta = 32' 49" 25.0" (RT)$	$\Delta = 3' 41" 57.2" (RT)$
$D = 23' 52" 23.7"$	$D = 9' 32" 57.5"$
$L = 137.49'$	$L = 38.74'$
$T = 70.69'$	$T = 19.38'$
$R = 240.00'$	$R = 600.00'$

Place Matting for Erosion Control
on Slope as Work Allows.
Sta. 18+50 to Sta. 21+00 -L- LT
Sta. 19+00 to Sta. 21+00 -L- RT

★ TRAFFIC SIGNAL

FOR -L- PROFILE VIEW, SEE SHEET 9
FOR -Y10- PROFILE VIEW, SEE SHEET 12
FOR -RPC- EXIST. PROFILE VIEW, SEE SHEET 12