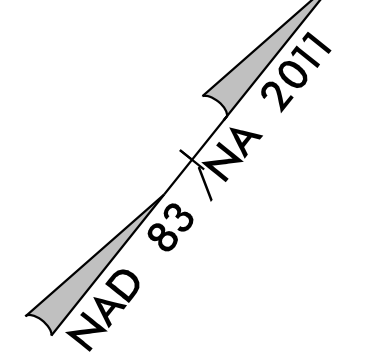


PROJECT REFERENCE NO. U-5826	SHEET NO. EC-04/CONST.04
RW SHEET NO.	
ROADWAY DESIGN ENGINEER	HYDRAULICS ENGINEER

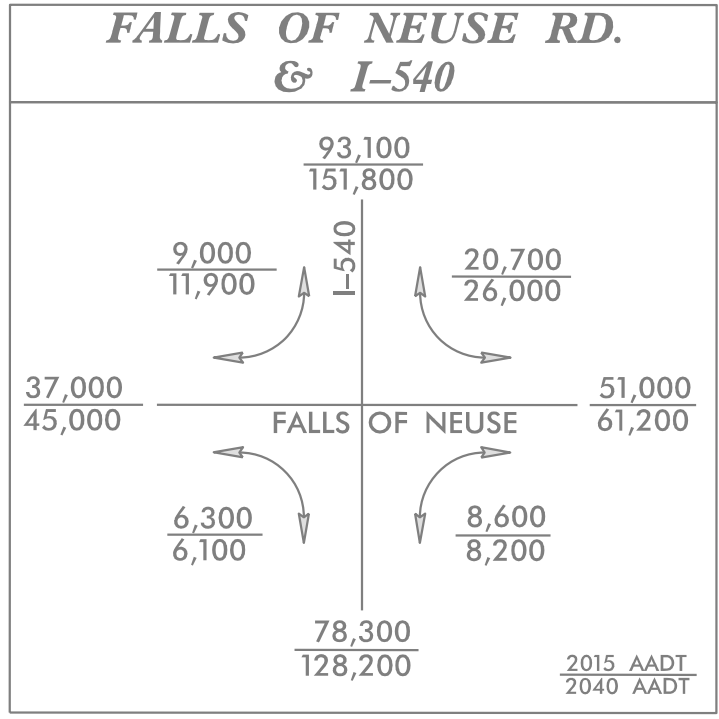
CLEARING AND GRUBBING
EROSION CONTROL FOR
CONSTRUCTION SHEET 04



-L-
PI Sta 13+96.43
Δ = 36° 33' 46.6" (LT)
D = 4° 46' 28.7"
L = 765.77'
T = 396.43'
R = 1,200.00'
e = .04
RUNOFF = 200'

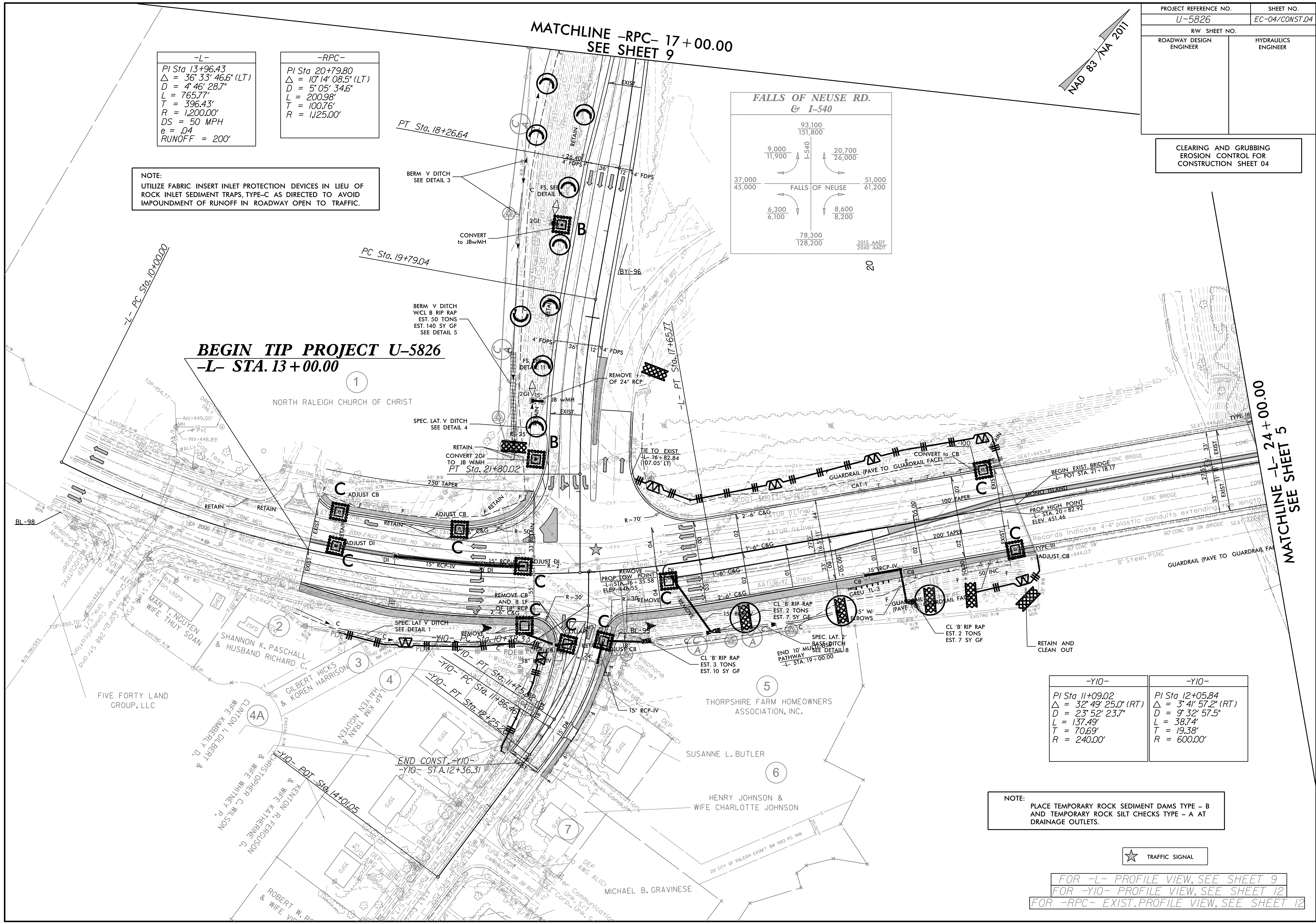
-RPC-
PI Sta 20+79.80
Δ = 10° 14' 08.5" (LT)
D = 5° 05' 34.6"
L = 200.98'
T = 100.76'
R = 1,125.00'

NOTE:
UTILIZE FABRIC INSERT INLET PROTECTION DEVICES IN LIEU OF
ROCK INLET SEDIMENT TRAPS, TYPE-C AS DIRECTED TO AVOID
IMPOUNDMENT OF RUNOFF IN ROADWAY OPEN TO TRAFFIC.



MATCHLINE -RPC- 17+00.00
SEE SHEET 9

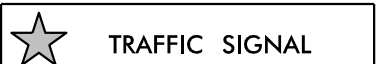
BEGIN TIP PROJECT U-5826
-L- STA. 13+00.00



MATCHLINE -L- 24+00.00
SEE SHEET 5

-Y10- PI Sta 11+09.02 Δ = 32° 49' 25.0" (RT) D = 23° 52' 23.7" L = 137.49' T = 70.69' R = 240.00'	-Y10- PI Sta 12+05.84 Δ = 3° 41' 57.2" (RT) D = 9° 32' 57.5" L = 38.74' T = 19.38' R = 600.00'
---	--

NOTE:
PLACE TEMPORARY ROCK SEDIMENT DAMS TYPE - B
AND TEMPORARY ROCK SILT CHECKS TYPE - A AT
DRAINAGE OUTLETS.



FOR -L- PROFILE VIEW, SEE SHEET 9
FOR -Y10- PROFILE VIEW, SEE SHEET 12
FOR -RPC- EXIST. PROFILE VIEW, SEE SHEET 12