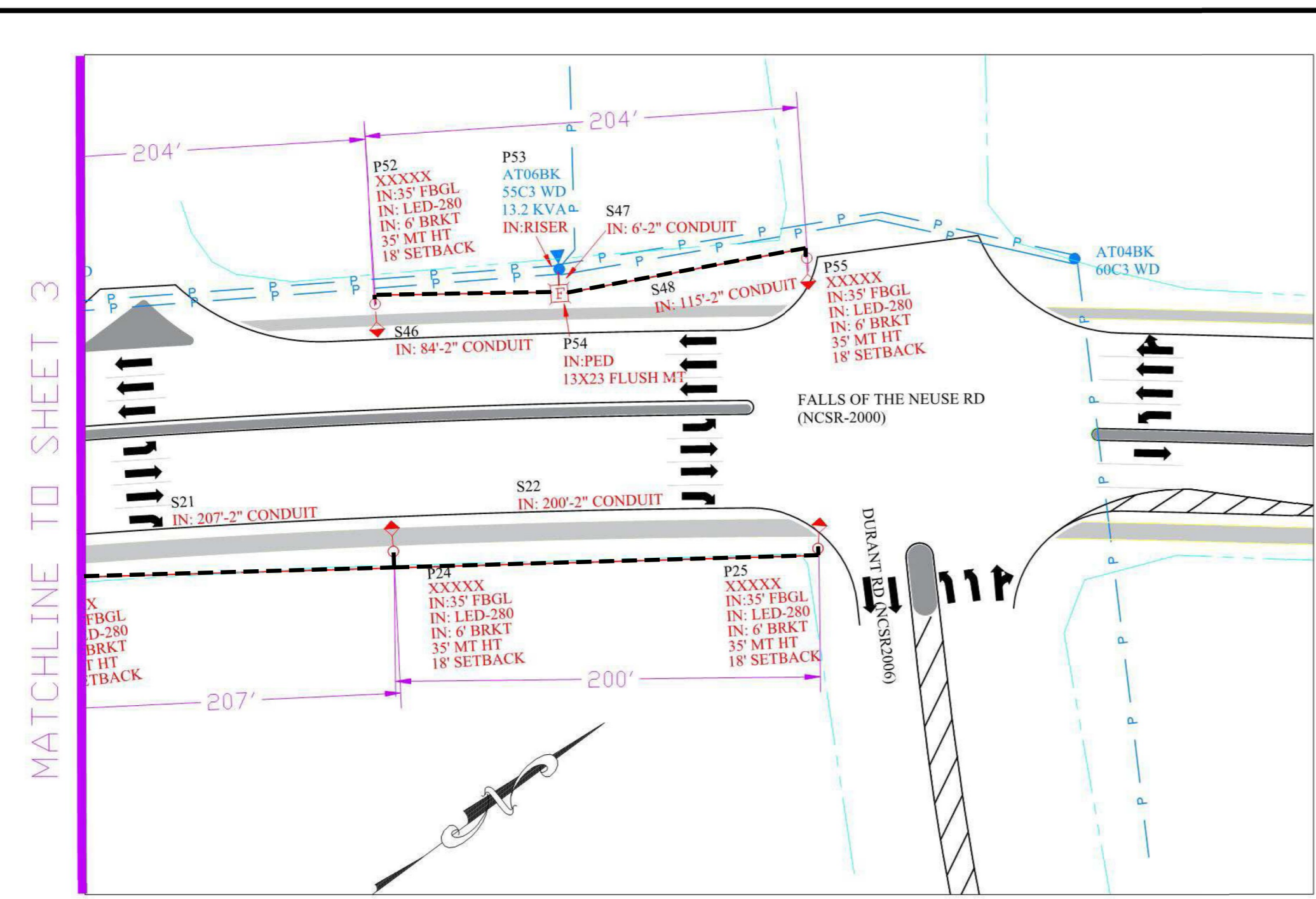


USE FOR LIGHTING CONSTRUCTION ONLY

NTS

LEGEND

----- 2" PVC CONDUIT FURNISHED BY DUKE ENERGY AND TO BE INSTALLED BY CONTRACTOR FOR FUTURE DUKE ENERGY LIGHTING ALONG FALLS OF NEUSE ROAD



NOTES

- LIGHTING LEVELS ARE BASED ON TWO-SIDED STAGGERED ARRANGEMENT LIGHTING FOR THE ROADWAY.
- LUMINARIES WILL BE 280 LED ROADWAY TYPE III, 4000K, RECTANGLE PATTERN WITH PHOTOCELLS AND BALLAST, RATED: 25,050 LUMENS 240V.
- ALL LIGHTING WITH UNDERGROUND SERVICE WILL BE INSTALLED ON NEW FIBERGLASS POLES LOCATED INSIDE OF ROAD R/W.
- MOUNTING HEIGHT FOR LIGHTING FIXTURES: 35' WITH 6' BRACKET ON NEW FIBERGLASS POLES.
- MINIMUM SETBACK OF NEW LIGHTING POLES 12' FROM EDGE OF TRAVEL LANE. DESIGN SETBACK IS 18'. SEE DRAWING FOR DETAILS.
- ALL POWER SOURCES WILL BE FROM DUKE ENERGY-PROGRESS FACILITIES.
- ALL CONSTRUCTION WILL COMPLY WITH NESC REQUIREMENTS AND DUKE ENERGY-PROGRESS SPECIFICATIONS. REFER TO THE DUKE ENERGY-PROGRESS DRAWINGS LISTED.
- THIS IS AN NCDOT ROADWAY. APPROVED NCDOT ENCROACHMENT MUST BE ON-SITE DURING CONSTRUCTION

FALLS OF NEUSE RD (NCSR-2000)

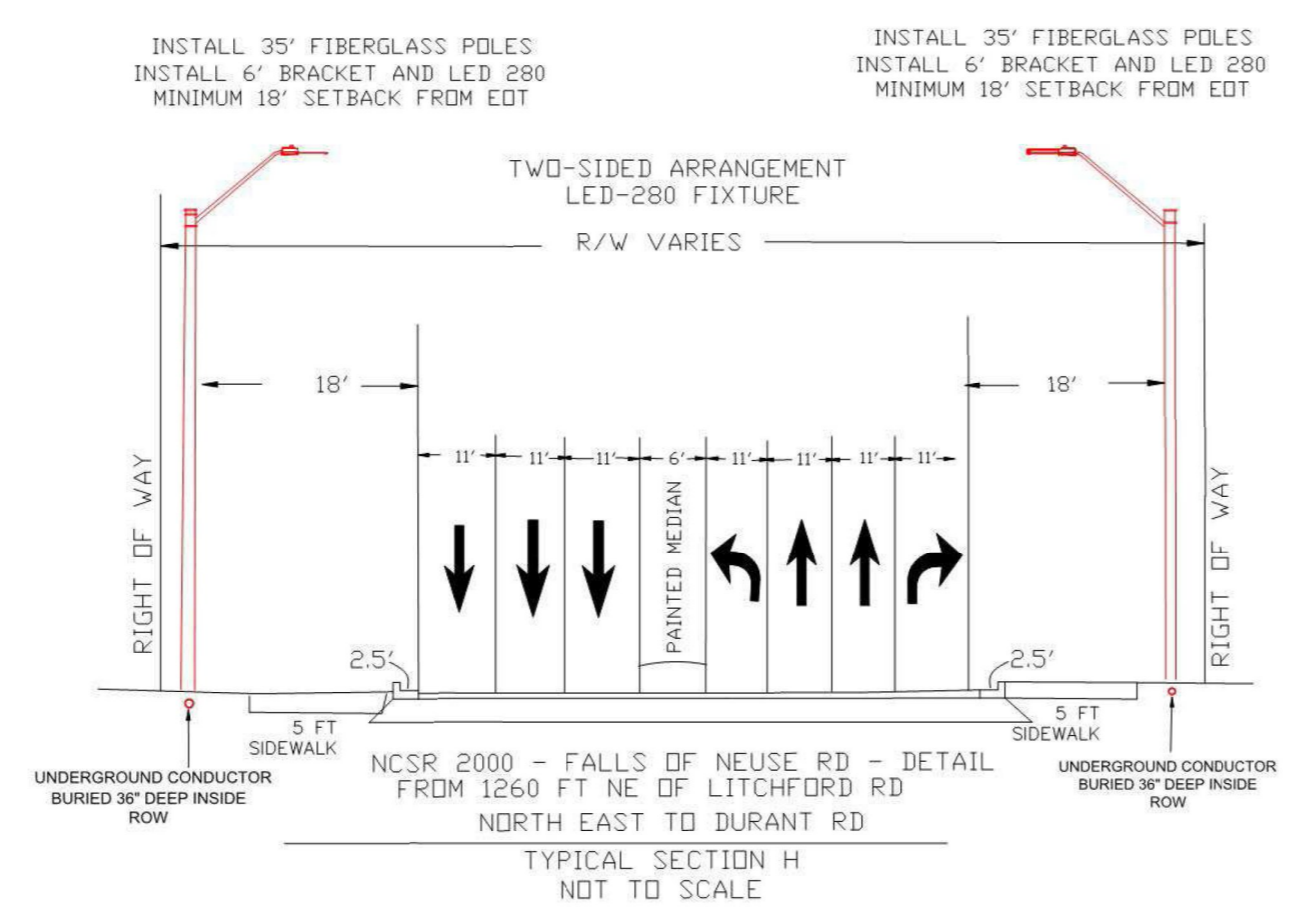
NESC REQUIREMENTS		ACTUAL	
MINOR ARTERIAL/COMMERCIAL			
AVE. MAINT. FC :	1.4 MIN.	1.37	
AVE. / MIN. RATIO :	4:1 MAX.	3.64	
VEIL. LUM. MAX RATIO	0.3:1 MAX.	0.3	

LIGHTING LEVELS CALCULATED USING ALADAN/LITEPRO
 AVG DAILY TRAFFIC: 48,000
 DESIGN SPEED LIMIT: 45 MPH
 ACTUAL SPEED LIMIT: 45 MPH
 AVG SPAN DISTANCE: 199 FEET

FOR CONSTRUCTION DETAILS, REFER TO THE FOLLOWING PE SPECIFICATION DRAWINGS

DRAWING NUMBER	DRAWING TITLE
30.02-104	LIGHTING BRACKETS FOR STEEL (AND FIBERGLASS) POLES
30.00-15	MOUNTING HEIGHT FOR LUMINAIRES
30.09-01	FIBERGLASS POLE LIGHTING DETAILS

PROPOSED	EXISTING	REMOVE	ABANDON	LEGEND
				LED LUMINAIRE
				DECORATIVE LUMINAIRE
				FIBERGLASS/STEEL LIGHTING POLE
				WOOD POLE
				FOREIGN POLE
				TRANSFORMER (POLE MOUNTED)
				STREET LIGHT CIRCUIT UNDERGROUND
				STREET LIGHT CIRCUIT OVERHEAD
				OH PRIMARY CIRCUIT
				R/W/PROPERTY LINES
				SECONDARY FLUSH MOUNT PEDestal
				TRANSFORMER (PAD MOUNTED)
				CONDUIT



Safety Reminders / Adverse Conditions

REMEMBER: Work zone area conditions may have changed for this job! Everyone is responsible for verifying the above safety information is correct prior to any work being performed each day!

WZ: REMEMBER "YOUR CIRCLE OF SAFETY"
 WZ: SET PROPER WORK ZONE NEEDS
 WZ: SET PROPER SIGNS, CONES, AND BARRICADES
 WZ: REMEMBER WALK, AROUND, AND PRETUP

LIGHTING DESIGN TOLERANCE

The color and appearance of light fixtures in this lighting design are provided as a guide and are based on specific information that has been supplied to Duke Energy. Any discrepancies in the installed requirements, placement, or appearance of lighted areas generally including aesthetic differences, reflective properties or surrounding surfaces, construction (hull or material), or the lighted area or lighting from sources other than those in this design may produce different results from the specified values. Normal variances of color, tone, and other related lighting manufacturer will also affect results.



PROPRIETARY & CONFIDENTIAL

This document together with the concepts and designs presented herein, presented as an instrument of service, is the sole property of Duke Energy, and is intended only for the specific purpose and prospective client as stated in the title block of this drawing. Any use, copying, reproduction or disclosure of the drawing, design or any information contained herein by the prospective customer or other entities, including without limitation, architects, engineers, or equipment manufacturers is hereby expressly prohibited and shall not be permitted absent prior written consent from, and payment of compensation to Duke Energy. Duke Energy disclaims any liability or responsibility for any unauthorized use of or reliance on this document.

STREET LIGHTING ARRANGEMENT FOR FALLS OF THE NEUSE (NCSR-2000) I-540 TO DURANT

RALEIGH NC
 Designed by DUKE ENERGY PROGRESS LIGHTING SOLUTIONS
 Reviewed by CHARLES JONES Scale 1" = 40'
 Date 2-18-2020 Size Drawing size "D"
 Description WR 34443477
 Drawing No. U-5826 Sh. 4 OF 4

NO.	DATE	REVISION	BY

2			
1			
Rev.	Date	Description	Approved
NORTH CAROLINA DEPARTMENT OF TRANSPORTATION ROADWAY DESIGN LIGHTING/ELECTRICAL SECTION LIGHTING LAYOUT ELECTRICAL CONDUIT SYSTEM WAKE COUNTY			
Drawn By:	AB	Approved By:	Dwg No.:

02-MAR-2020 14:28
 U-5826-ECS.dgn
 lab:own: AT RD-3074554