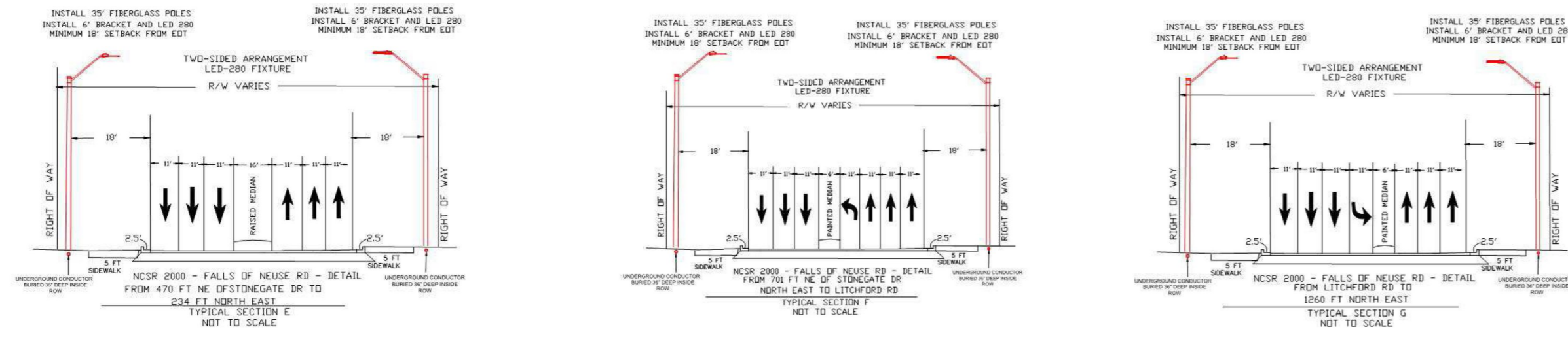
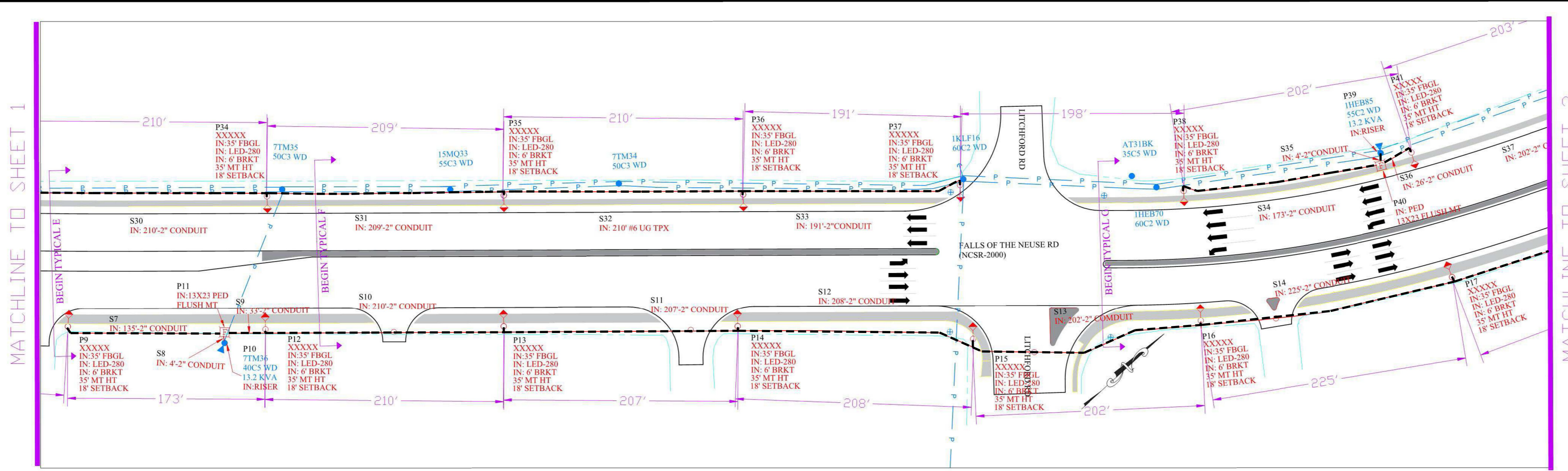


# USE FOR LIGHTING CONSTRUCTION ONLY

NTS

## LEGEND

--- 2" PVC CONDUIT FURNISHED BY DUKE ENERGY AND TO BE INSTALLED BY CONTRACTOR FOR FUTURE DUKE ENERGY LIGHTING ALONG FALLS OF NEUSE ROAD



FALLS OF NEUSE RD (NCSR-2000)

IES REQUIREMENTS	MINOR ARTERIAL/COMMERCIAL	ACTUAL
Ave. Maint. FC :	1.4 MIN.	1.37
Ave. / Min. Ratio :	4:1 MAX.	3.64
Veil. Lum. Max Ratio :	0.31 MAX.	0.3

LIGHTING LEVELS CALCULATED USING ALADAN/LITEPRO  
 AVG DAILY TRAFFIC: 48,000  
 DESIGN SPEED LIMIT: 45 MPH  
 ACTUAL SPEED LIMIT: 45 MPH  
 AVG SPAN DISTANCE: 199 FEET

FOR CONSTRUCTION DETAILS, REFER TO THE FOLLOWING PE SPECIFICATION DRAWINGS

DRAWING NUMBER	DRAWING TITLE
30.02-104	LIGHTING BRACKETS FOR STEEL (AND FIBERGLASS) POLES
30.00-15	MOUNTING HEIGHT FOR LUMINAIRES
30.09-01	FIBERGLASS POLE LIGHTING DETAILS

PROPOSED	EXISTING	REMOVE	ABANDON	LEGEND
				LED LUMINAIRE
				DECORATIVE LUMINAIRE
				FIBERGLASS/STEEL LIGHTING POLE
				WOOD POLE
				FOREIGN POLE
				TRANSFORMER POLE MOUNTED
				STREET LIGHT CIRCUIT UNDERGROUND
				STREET LIGHT CIRCUIT OVERHEAD
				ON PRIMARY CIRCUIT
				ROW/PROPERTY LINES
				SECONDARY FLUSH MOUNT PEDESTAL
				TRANSFORMER PAD MOUNTED
				CONDUIT

**SAFETY First**

**Safety Reminders / Adverse Conditions**

- WZ: REMEMBER YOUR CIRCLE OF SAFETY
- WZ: SET PROPER WORK ZONE NEEDED
- WZ: SET PROPER SIGNS, CONES, AND BARRICADES
- WZ: REMEMBER WALK AROUND AND PRETRIP

REMEMBER: Work zone area conditions may have changed for this job! Everyone is responsible for verifying the above safety information is correct prior to any work being performed each day.

**LIGHTING DESIGN TOLERANCE**

This document together with the concepts and designs presented herein, are provided as a guide and are based on specific information that has been provided to Duke Energy. Any information in the supplied information, differences in luminaire manufacturer, lighting units geometry including spacing, alignment, reflective properties of mounting surfaces, distribution, glare or otherwise in the lighting design may produce different results from the product shown. Normal tolerances or settings may occur, and correct and luminaire manufacture will stop when results.



**PROPRIETARY & CONFIDENTIAL**

This document together with the concepts and designs presented herein, presented as an instrument of service, is the sole property of Duke Energy, and is intended only for the specific purpose and prospective client as stated in the title block of this drawing. Any use, copying, reproduction or disclosure of the drawing, design or any information contained herein by the prospective customer or other entities, including without limitation, architects, engineers, or equipment manufacturers is hereby expressly prohibited and shall not be permitted absent prior written consent from, and payment of compensation to, Duke Energy. Duke Energy disclaims any liability or responsibility for any unauthorized use of or reliance on this document.

STREET LIGHTING ARRANGEMENT FOR FALLS OF THE NEUSE (NCSR-2000) I-540 TO DURANT RALEIGH NC

Designed by DUKE ENERGY PROGRESS LIGHTING SOLUTIONS  
 Reviewed by CHARLES JONES Scale 1" = 40'  
 Date 2-18-2020 Size Drawing size "D"  
 Description WR 34443477  
 Drawing No. U-5826 Sht. 2 OF 4

NO.	DATE	REVISION	BY

2			
1			
Rev.	Date	Description	Approved
<b>NORTH CAROLINA DEPARTMENT OF TRANSPORTATION</b> ROADWAY DESIGN LIGHTING/ELECTRICAL SECTION <b>LIGHTING LAYOUT</b> <b>ELECTRICAL CONDUIT SYSTEM</b> WAKE COUNTY			
Drawn By:	Approved By:	Dwg No.:	
AB			

09-MAR-2020 15:17  
 R:\U-5826\Lighting Design\U-5826.l&e.Duke.ECS.dgn  
 1abr.cwm  
 91 PD-303454