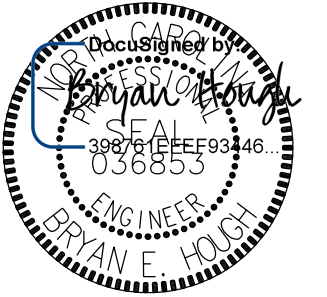
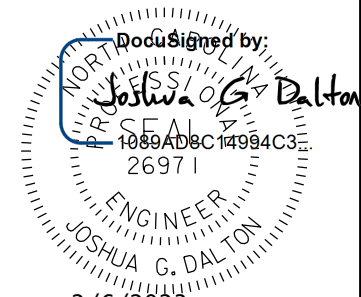


5/28/23

-RPC-

KCI Engineers • Planners • Scientists • Construction Managers
4505 Falls of Neuse Road, Suite 400
Raleigh, NC 27609-6270
Phone (919) 783-9214 • Fax (919) 783-9266

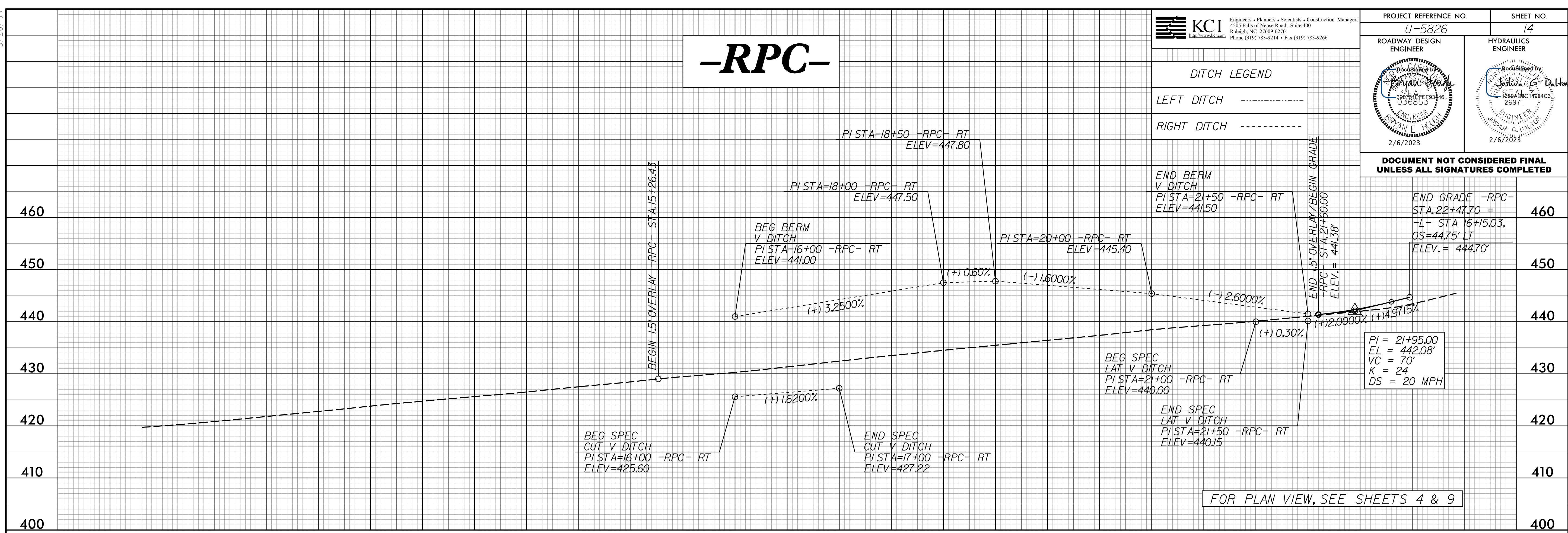
PROJECT REFERENCE NO. U-5826		SHEET NO. 14
ROADWAY DESIGN ENGINEER  BRYAN E. HOGG 2/6/2023	HYDRAULICS ENGINEER  JOSHUA G. DALTON 2/6/2023	

DITCH LEGEND

LEFT DITCH - - - - -

RIGHT DITCH - - - - -

DOCUMENT NOT CONSIDERED FINAL UNLESS ALL SIGNATURES COMPLETED



05_FEB_2023 10:55 AM 33355_03 NCDOT U-5826 Falls of the Neuse Rd\Roadway\Proj\U-5826_Rdy.pfl.sheet.layout.dgn