

5/28/24

KCI Engineers • Planners • Scientists • Construction Managers
 4505 Falls of Neuse Road, Suite 400
 Raleigh, NC 27609-6270
 Phone (919) 783-9214 • Fax (919) 783-9266

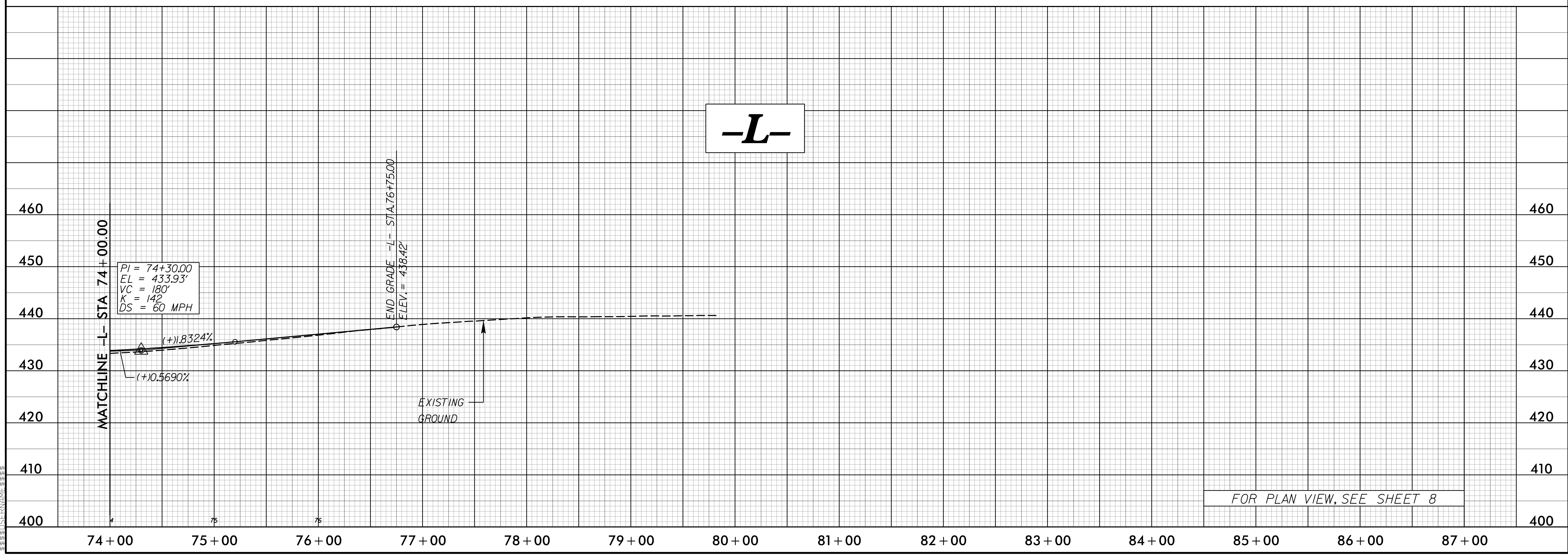
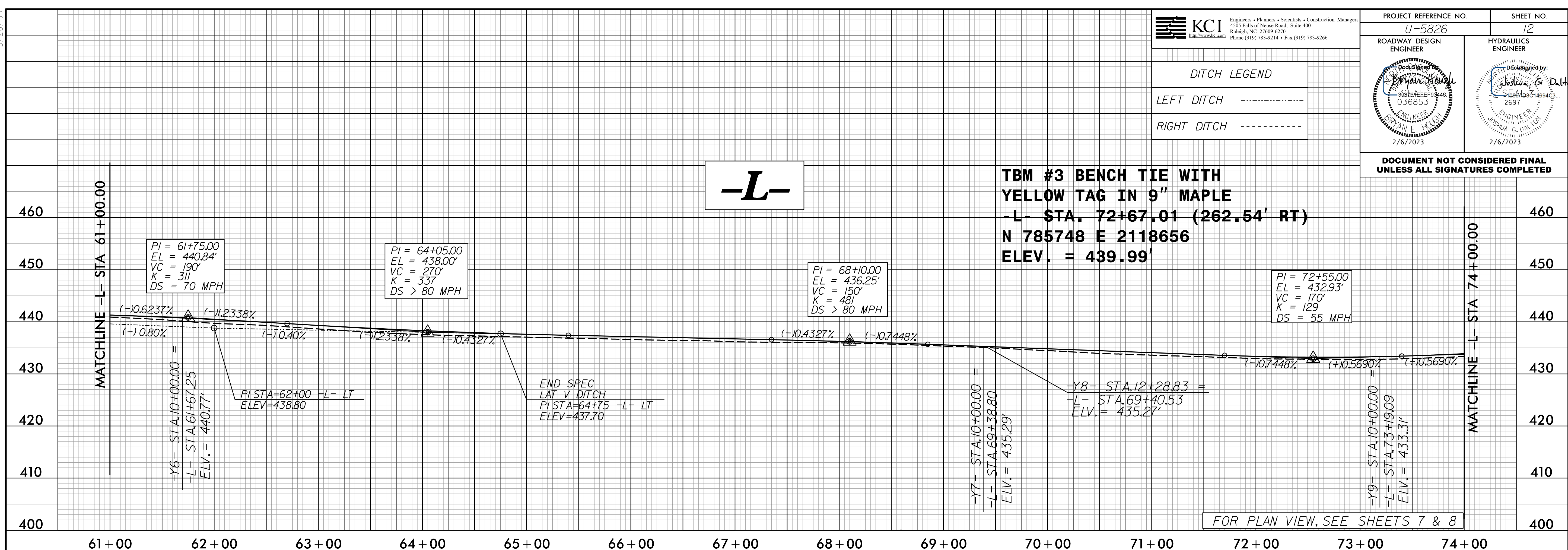
PROJECT REFERENCE NO. U-5826	SHEET NO. 12
ROADWAY DESIGN ENGINEER <i>[Signature]</i>	HYDRAULICS ENGINEER <i>[Signature]</i>
DESIGNED BY <i>[Signature]</i> 38875 EEPB3446 036853 ENGINEER BRYAN E. HODG	DESIGNED BY <i>[Signature]</i> 4084D8E14994G3 26971 ENGINEER JOSHUA G. DALTON
2/6/2023	2/6/2023

DITCH LEGEND

LEFT DITCH - - - - -

RIGHT DITCH - - - - -

DOCUMENT NOT CONSIDERED FINAL UNLESS ALL SIGNATURES COMPLETED



D:\5826\03 NCDOT U-5826 Falls of the Neuse Rd\Roadway\Proj\U-5826_Rdy.pflsheet_layout.dgn