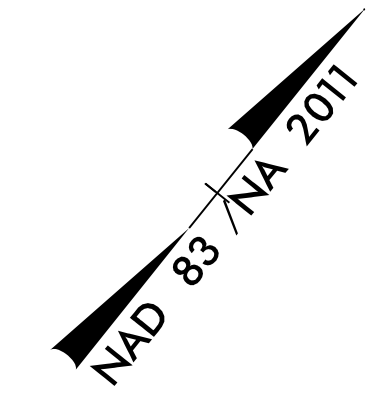


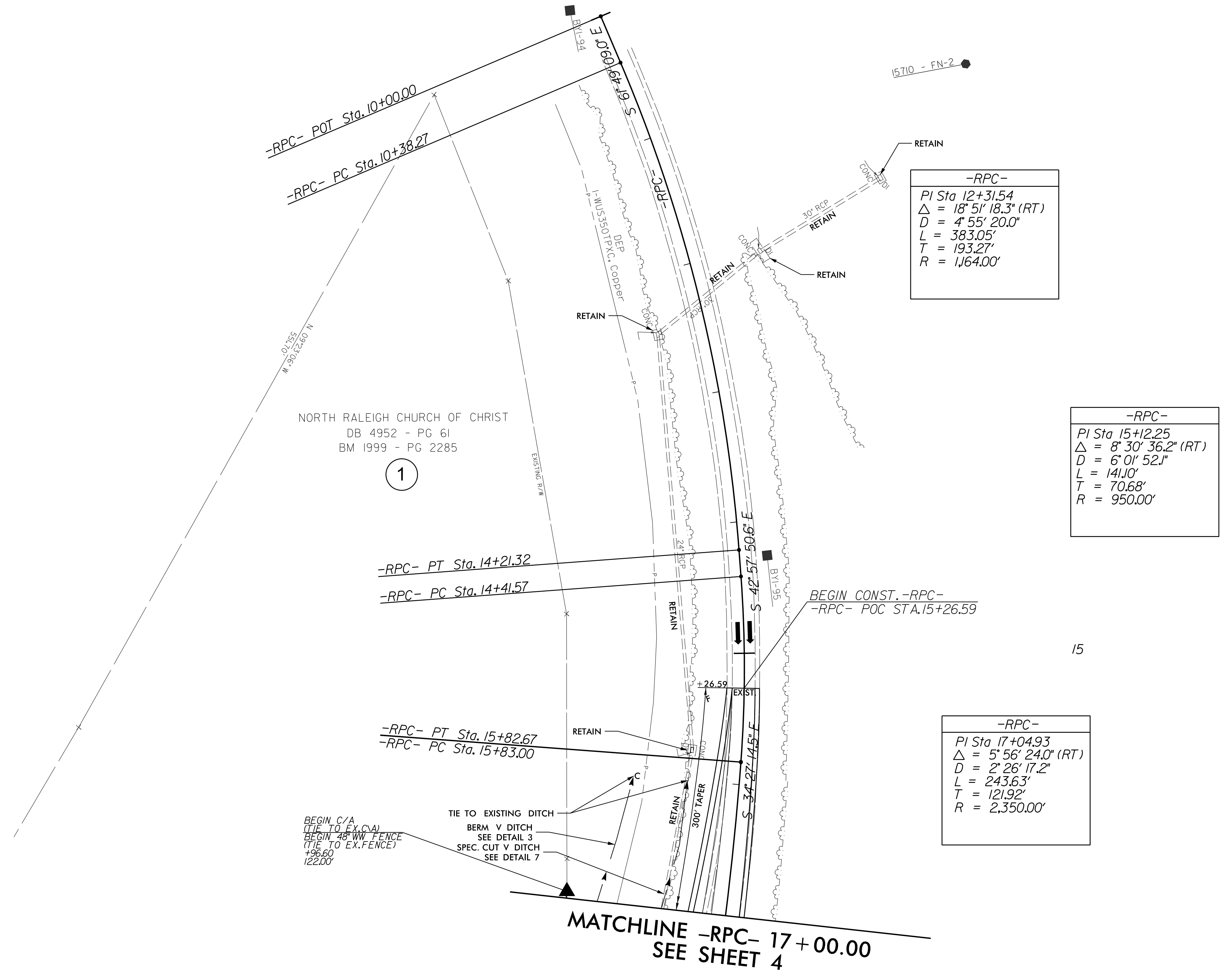
8/17/99

REVISIONS

01-FEB-2023 20:47  
M:\2013\2133395.03 NCDOT U-5826 Falls of the Neuse Rd\Roadway\Pro\U-5826\_Rdy\_psh\_3.dgn  
BRYAN E. HOLCH



|  |                         |
|--|-------------------------|
| PROJECT REFERENCE NO.<br><i>U-5826</i>   | SHEET NO.<br><b>9</b>   |
| RW SHEET NO.   |                         |
| ROADWAY DESIGN ENGINEER<br>  | HYDRAULICS ENGINEER<br> |
| 2/6/2023   | 2/6/2023                |
| <b>DOCUMENT NOT CONSIDERED FINAL<br/>UNLESS ALL SIGNATURES COMPLETED</b>   |                         |
| KCI<br><small>Engineers • Planners • Scientists • Construction Managers<br/>4505 Falls of Neuse Road, Suite 400<br/>Raleigh, NC 27609-6270<br/>Phone (919) 783-9214 • Fax (919) 783-9266</small> |                         |



**NOTE: RETAIN ALL TREES WHERE POSSIBLE  
THAT ARE OUTSIDE OF THE SLOPE STAKES**  
 FOR -RPC- PROFILE VIEW, SEE SHEET 14