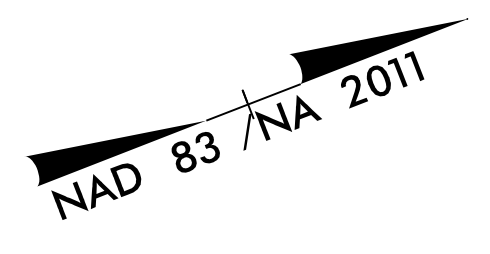


PROJECT REFERENCE NO. U-5826		SHEET NO. 7	
RW SHEET NO.		HYDRAULICS ENGINEER	
ROADWAY DESIGN ENGINEER		ENGINEER	
2/6/2023		2/6/2023	
DOCUMENT NOT CONSIDERED FINAL UNLESS ALL SIGNATURES COMPLETED			

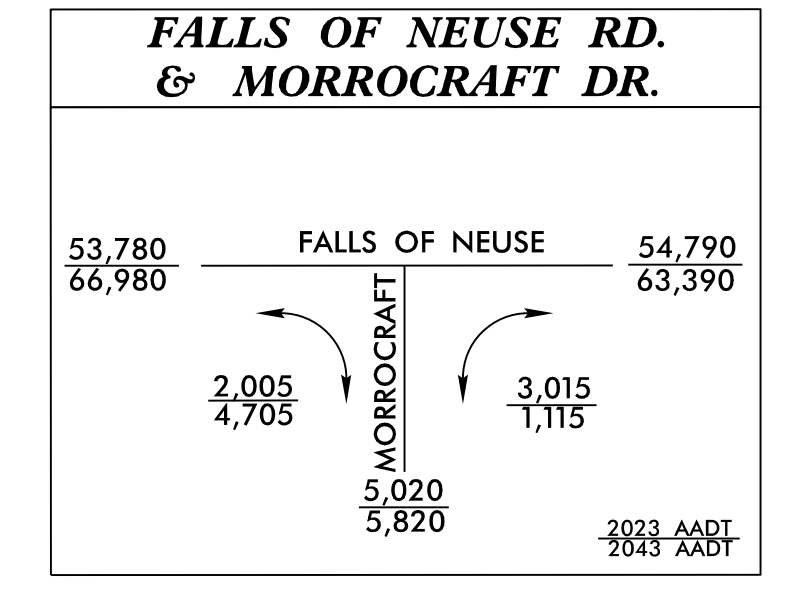


-L-
PI Sta 51+25.00
Δ = 15' 18" 09.5" (LT)
D = 5' 50' 47.4"
L = 261.74'
T = 131.65'
R = 980.00'
DS = 50 MPH
e = .04
RUNOFF = 200'

-L-
PI Sta 54+42.77
Δ = 11' 54" 18.7" (LT)
D = 3' 10' 59.2"
L = 374.01'
T = 187.68'
R = 1,800.00'
DS = 50 MPH
e = .04
RUNOFF = 200'

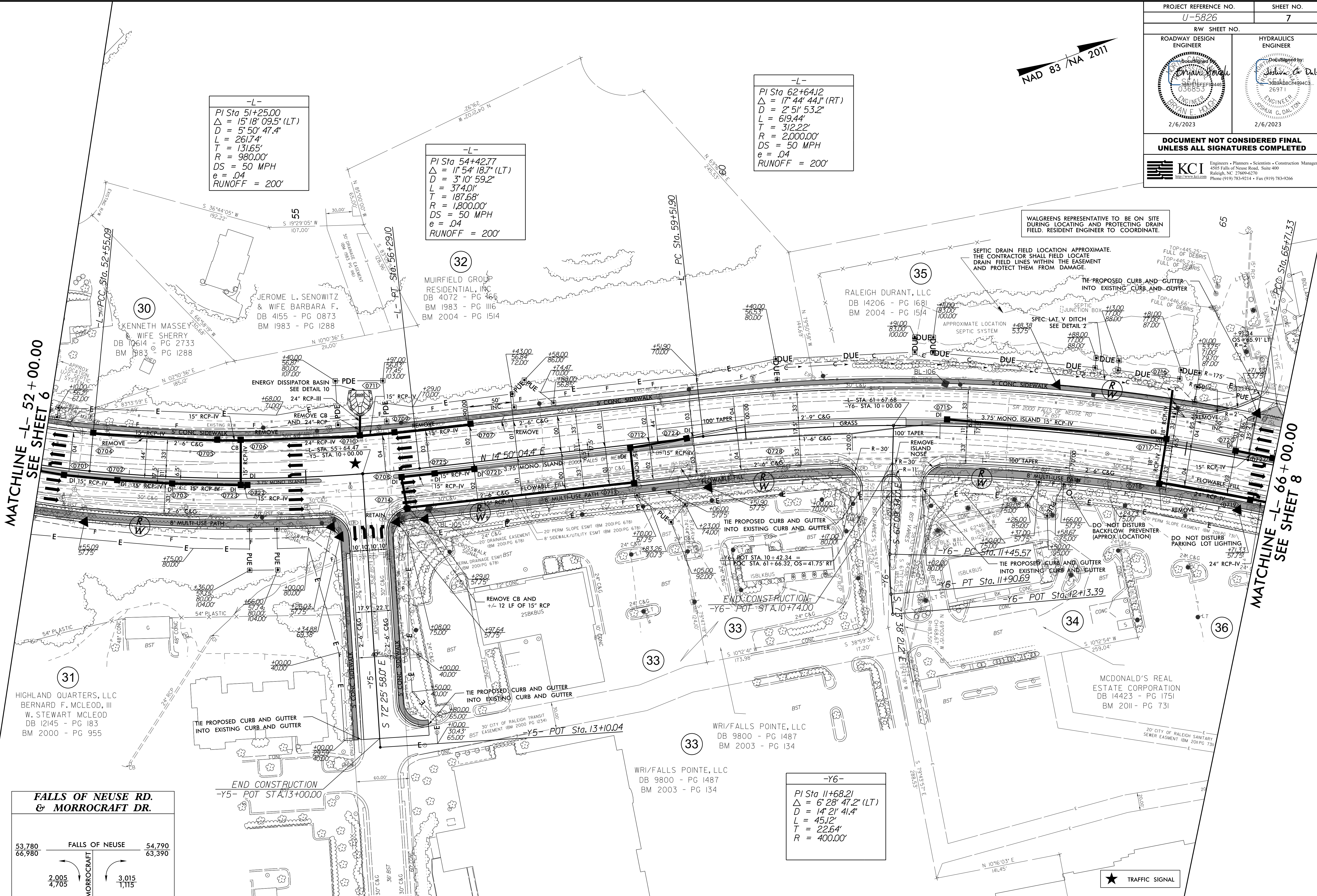
-L-
PI Sta 62+64.12
Δ = 17' 44" 44.1" (RT)
D = 2' 51' 53.2"
L = 619.44'
T = 312.22'
R = 2,000.00'
DS = 50 MPH
e = .04
RUNOFF = 200'

-Y6-
PI Sta 11+68.21
Δ = 6' 28" 47.2" (LT)
D = 14' 21' 41.4"
L = 45.12'
T = 22.64'
R = 400.00'



MATCHLINE -L- 52 + 00.00
SEE SHEET 6

MATCHLINE -L- 66 + 00.00
SEE SHEET 8



WALGREENS REPRESENTATIVE TO BE ON SITE DURING LOCATING AND PROTECTING DRAIN FIELD. RESIDENT ENGINEER TO COORDINATE.

SEPTIC DRAIN FIELD LOCATION APPROXIMATE. THE CONTRACTOR SHALL FIELD LOCATE DRAIN FIELD LINES WITHIN THE EASEMENT AND PROTECT THEM FROM DAMAGE.

DO NOT DISTURB BACKFLOW PREVENTER (APPROX LOCATION)

DO NOT DISTURB PARKING LOT LIGHTING

NOTE: RETAIN ALL TREES WHERE POSSIBLE THAT ARE OUTSIDE OF THE SLOPE STAKES FOR -L- PROFILE VIEW, SEE SHEETS 11 & 12 FOR -Y5- PROFILE VIEW, SEE SHEET 13

REVISIONS

01-FEB-2023 20:36
M:\2013\20130315\03 NCDOT U-5826 Falls of the Neuse Rd\Roadway\Pro\U-5826-Rdly.psh_7.dgn
JULIEN.BERNARD