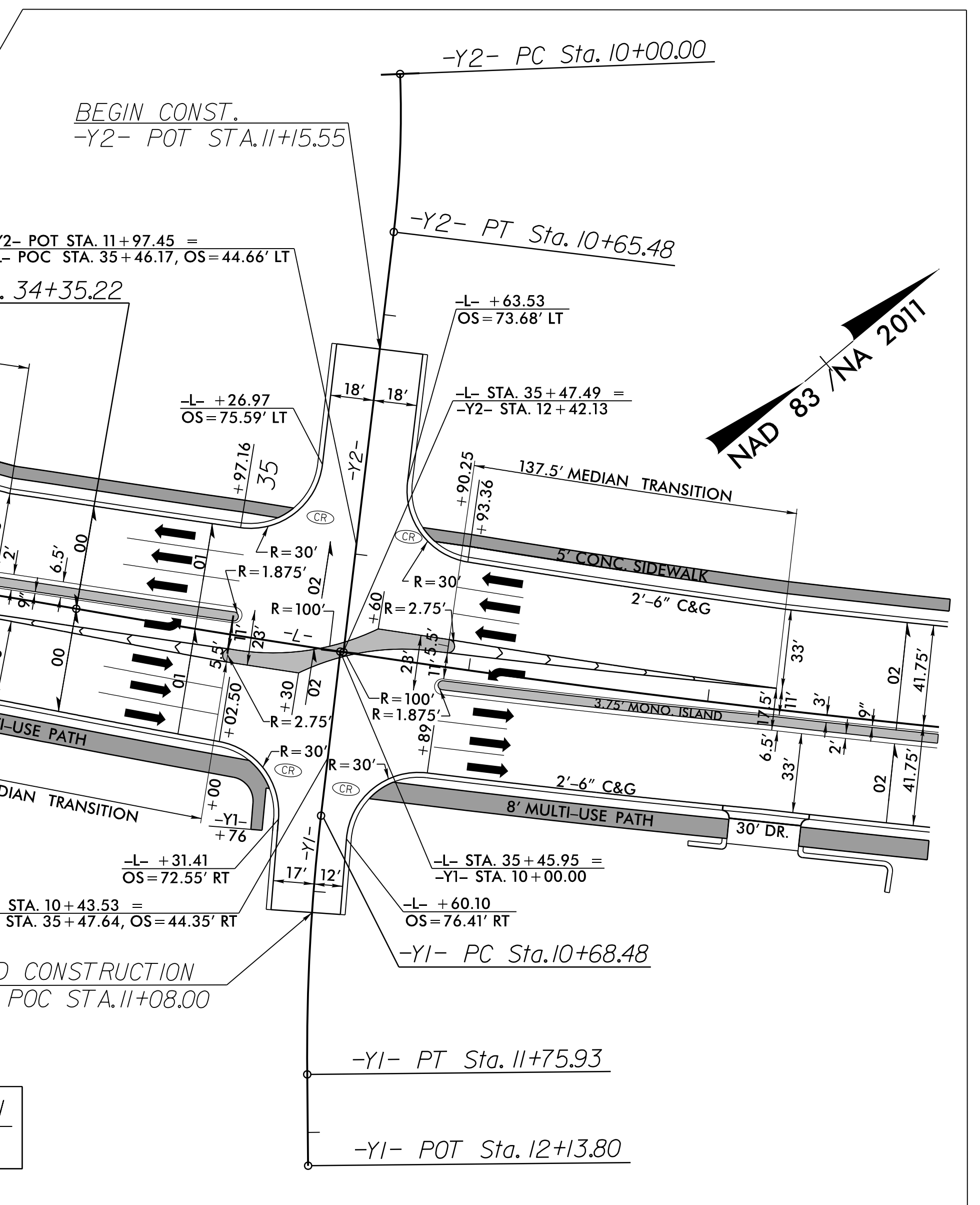
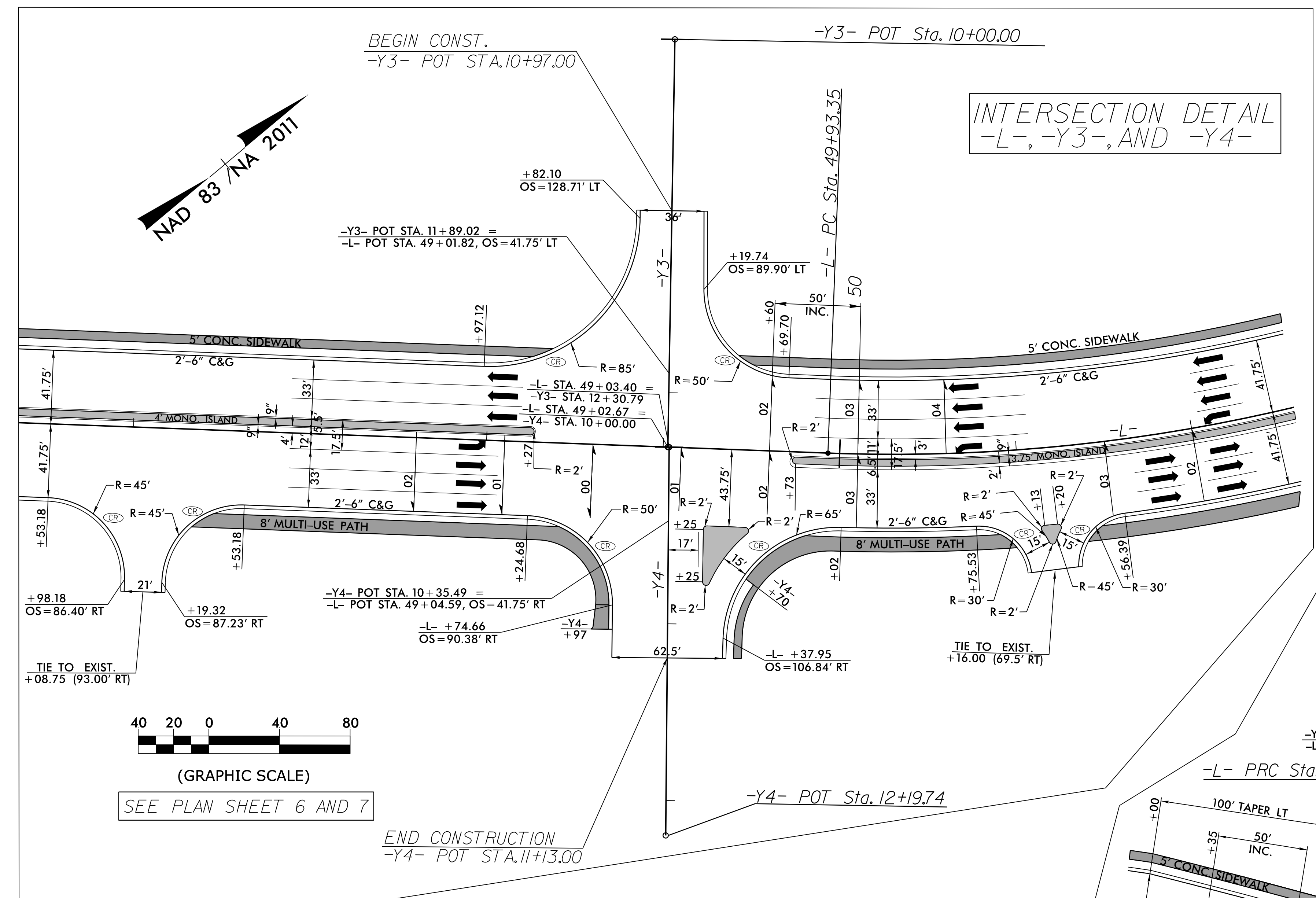


8/17/99

PROJECT REFERENCE NO. U-5826	SHEET NO. 2B-2
RW SHEET NO.	
ROADWAY DESIGN ENGINEER	
DOCUMENT NOT CONSIDERED FINAL UNLESS ALL SIGNATURES COMPLETED	



REVISIONS

06-FEB-2023 12:49 M:\2013\2133395.03 NCDOT U-5826 Falls of the Neuse Rd\Roadway\Pro\U-5826_Rdy-dtl_Intersection.dgn