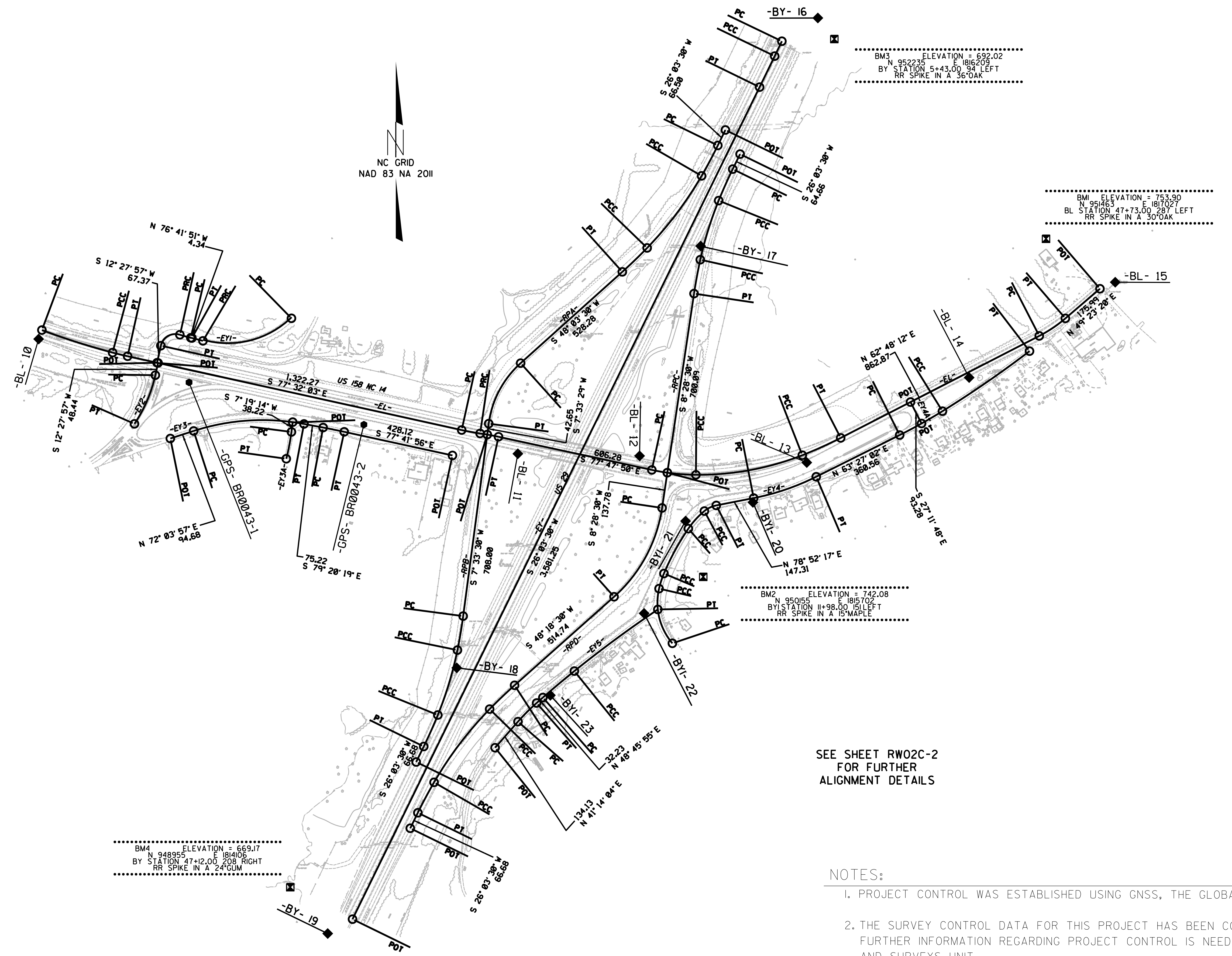


SURVEY CONTROL SHEET

W/ EXISTING CENTERLINE ALIGNMENTS PRIOR TO CONSTRUCTION



BM3 ELEVATION = 692.02
 N 952235 E 1816209
 BY STATION 5+43.00 94' LEFT
 RR SPIKE IN A 36" OAK

BM ELEVATION = 753.90
 N 951463 E 181027
 BL STATION 47+73.00 287' LEFT
 RR SPIKE IN A 30" OAK

BM2 ELEVATION = 742.08
 N 950155 E 1815707
 BY STATION 11+98.00 151' LEFT
 RR SPIKE IN A 15" MAPLE

BM4 ELEVATION = 689.17
 N 948955 E 1814106
 BY STATION 47+12.00 208' RIGHT
 RR SPIKE IN A 24" GUM

SEE SHEET RW02C-2
 FOR FURTHER
 ALIGNMENT DETAILS

NOTES:

1. PROJECT CONTROL WAS ESTABLISHED USING GNSS, THE GLOBAL NAVIGATION SATELLITE SYSTEM.
2. THE SURVEY CONTROL DATA FOR THIS PROJECT HAS BEEN COMPILED FROM VARIOUS SOURCES. IF FURTHER INFORMATION REGARDING PROJECT CONTROL IS NEEDED, PLEASE CONTACT THE LOCATION AND SURVEYS UNIT.

REVISIONS

6/2/09

D:\50\208_4508_Survey\BR0043\MICROSTATION\BR0043.LS.RW2C-1.181102.dgn
 10/24/09 10:42 AM
 10/24/09 10:42 AM

SURVEY CONTROL SHEET

W/ EXISTING CENTERLINE ALIGNMENTS PRIOR TO CONSTRUCTION

6/2/99

EY4A

POINT	N	E	BEARING	DIST
POT	950831.286	1816503.390		
LINE			S 27°11'47.6" E	93.28
POT	950748.318	1816546.024		

EY5

POINT	N	E	BEARING	DIST	DELTA	D	L	T	R
POT	949494.705	1814897.971							
LINE			N 41°14'03.6" E	134.13					
PC	949595.571	1814986.379							
CURVE			N 44°59'59.4" E	101.87	07°31'51.6"(RT)	07°23'13.5"	101.95	51.05	775.62
PCC	949667.607	1815058.415							
PT									
LINE			N 48°45'55.2" E	32.23					
PC	949688.850	1815082.651							
CURVE			N 49°56'47.2" E	158.85	02°21'44.0"(RT)	01°29'13.2"	158.86	79.44	3853.12
PCC	949791.069	1815204.240							
PT	949791.069	1815204.240	N 53°33'20.5" E	401.04	04°51'22.6"(RT)	01°12'38.0"	401.16	200.70	4732.99

RPA

POINT	N	E	BEARING	DIST	DELTA	D	L	T	R
POT	951883.204	1815787.918							
LINE			S 26°03'30.5" W	66.50					
PC	951823.462	1815758.704							
CURVE			S 28°03'30.3" W	133.30	03°59'59.6"(RT)	02°59'59.8"	133.33	66.69	1909.90
PCC	951705.825	1815696.002							
PT									
CURVE			S 37°03'30.0" W	349.13	14°00'00.0"(RT)	04°00'00.0"	350.00	175.88	1432.39
PCC	951427.212	1815485.607							
PT	951334.702	1815389.614	S 46°03'30.1" W	133.31	04°00'00.0"(RT)	02°59'59.4"	133.34	66.70	1909.96
LINE			S 48°03'30.1" W	528.28					
PC	950981.614	1814996.666							
CURVE			S 27°48'29.7" W	264.41	40°30'00.7"(LT)	15°00'00.3"	270.00	140.92	381.97
PCC	950747.736	1814873.313							
PT									
LINE			S 07°33'29.4" W	42.65					
POT	950705.453	1814867.703							

RPB

POINT	N	E	BEARING	DIST	DELTA	D	L	T	R
POT	950705.453	1814867.703							
LINE			S 07°33'29.8" W	708.00					
PC	950003.608	1814774.577							
CURVE			S 09°33'29.8" W	133.31	04°00'00.0"(RT)	02°59'59.4"	133.34	66.70	1909.96
PCC	949872.145	1814752.440							
PT									
CURVE			S 16°48'29.9" W	262.13	10°30'00.1"(RT)	04°00'00.0"	262.50	131.62	1432.39
PCC	949621.211	1814676.639							
PT	949499.486	1814622.295	S 24°03'29.7" W	133.30	03°59'59.6"(RT)	02°59'59.8"	133.33	66.69	1909.90
LINE			S 28°03'29.5" W	66.68					
POT	949439.586	1814593.004							

RPC

POINT	N	E	BEARING	DIST	DELTA	D	L	T	R
POT	951789.983	1815844.745							
LINE			S 26°03'29.5" W	64.66					
PC	951731.896	1815816.342							
CURVE			S 24°03'29.7" W	133.30	03°59'59.6"(LT)	02°59'59.8"	133.33	66.69	1909.90
PCC	951610.172	1815761.998							
PT									
CURVE			S 17°16'00.1" W	239.30	09°34'59.6"(LT)	04°00'00.0"	239.58	120.07	1432.39
PCC	951381.655	1815690.969							
PT	951250.563	1815666.731	S 10°28'30.3" W	133.31	04°00'00.0"(LT)	02°59'59.4"	133.34	66.70	1909.96
LINE			S 08°28'30.3" W	700.09					
POT	950558.121	1815563.553							

RPD

POINT	N	E	BEARING	DIST	DELTA	D	L	T	R
POT	950558.121	1815563.553							
LINE			S 08°28'30.0" W	137.78					
PC	950421.849	1815543.248							
CURVE			S 28°23'30.0" W	390.36	39°50'00.0"(RT)	09°59'59.9"	398.33	207.60	572.96
PCC	950078.441	1815357.632							
PT									
LINE			S 48°18'30.0" W	514.74					
PC	949736.077	1814973.259							
CURVE			S 46°18'30.0" W	133.31	04°00'00.0"(LT)	02°59'59.4"	133.34	66.70	1909.97
PCC	949643.987	1814876.864							
PT									
CURVE			S 37°11'00.0" W	355.33	14°15'00.0"(LT)	04°00'00.0"	356.25	179.05	1432.39
PCC	949360.891	1814662.113							
PT	949243.254	1814599.410	S 28°03'30.2" W	133.30	03°59'59.5"(LT)	02°59'59.7"	133.33	66.69	1909.90
LINE			S 26°03'30.5" W	66.68					
POT	949183.352	1814570.118							

REVISIONS

NOTES:

1. PROJECT CONTROL WAS ESTABLISHED USING GNSS, THE GLOBAL NAVIGATION SATELLITE SYSTEM.
2. THE SURVEY CONTROL DATA FOR THIS PROJECT HAS BEEN COMPILED FROM VARIOUS SOURCES. IF FURTHER INFORMATION REGARDING PROJECT CONTROL IS NEEDED, PLEASE CONTACT THE LOCATION AND SURVEYS UNIT.

6/2/99