

### NOTES

THE COST OF THE BARRIER RAIL ON THE APPROACH SLAB SHALL BE INCLUDED IN THE LINEAR FOOT CONTRACT PRICE BID FOR "CONCRETE BARRIER RAIL".

THE BARRIER RAIL ON EACH APPROACH SLAB SHALL NOT BE CAST UNTIL ALL APPROACH SLAB CONCRETE HAS BEEN CAST AND HAS REACHED A MINIMUM COMPRESSIVE STRENGTH OF 3,000 PSI.

ALL REINFORCING STEEL IN BARRIER RAILS SHALL BE EPOXY COATED.

SHIFT, BEND, OR CUT REINFORCING STEEL AS NECESSARY TO CLEAR JOINT BLOCKOUT.

### BILL OF MATERIAL

#### CONCRETE BARRIER RAIL ON APPROACH SLABS

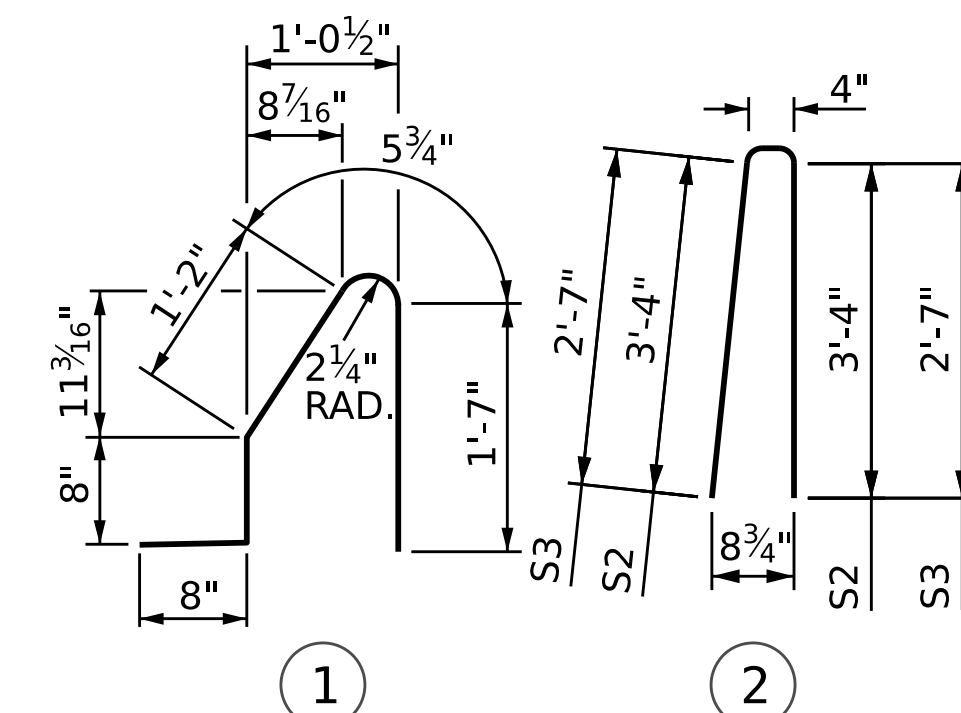
BAR	NO.	SIZE	TYPE	LENGTH	WEIGHT
* B1	88	5	STR	7'-1"	650
* S1	40	5	1	5'-1"	212
* S2	32	5	2	7'-0"	234
* S3	8	5	2	5'-6"	46

\* EPOXY COATED REINFORCING STEEL 1,142 LBS.

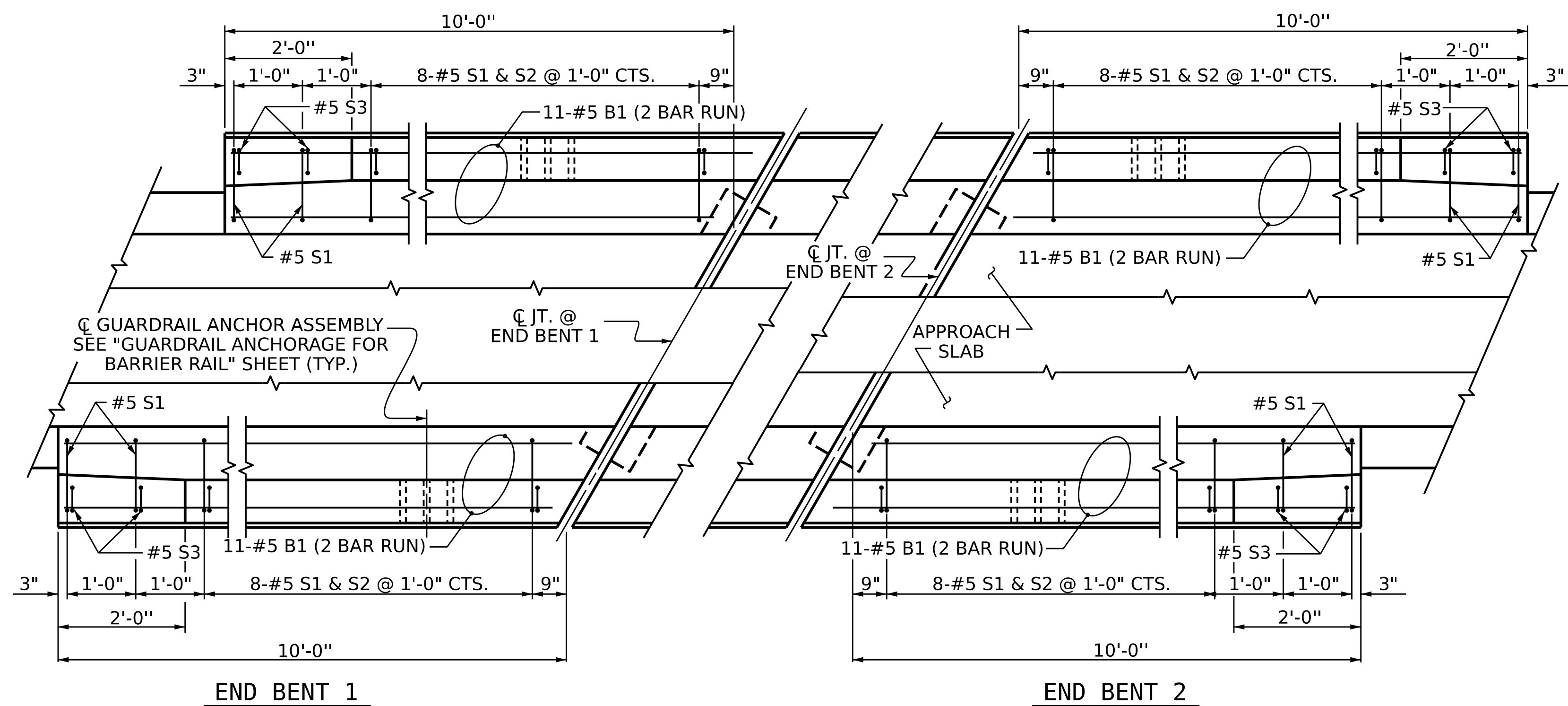
CLASS AA CONCRETE 5.7 C.Y.

CONCRETE BARRIER RAIL 40 L.F.

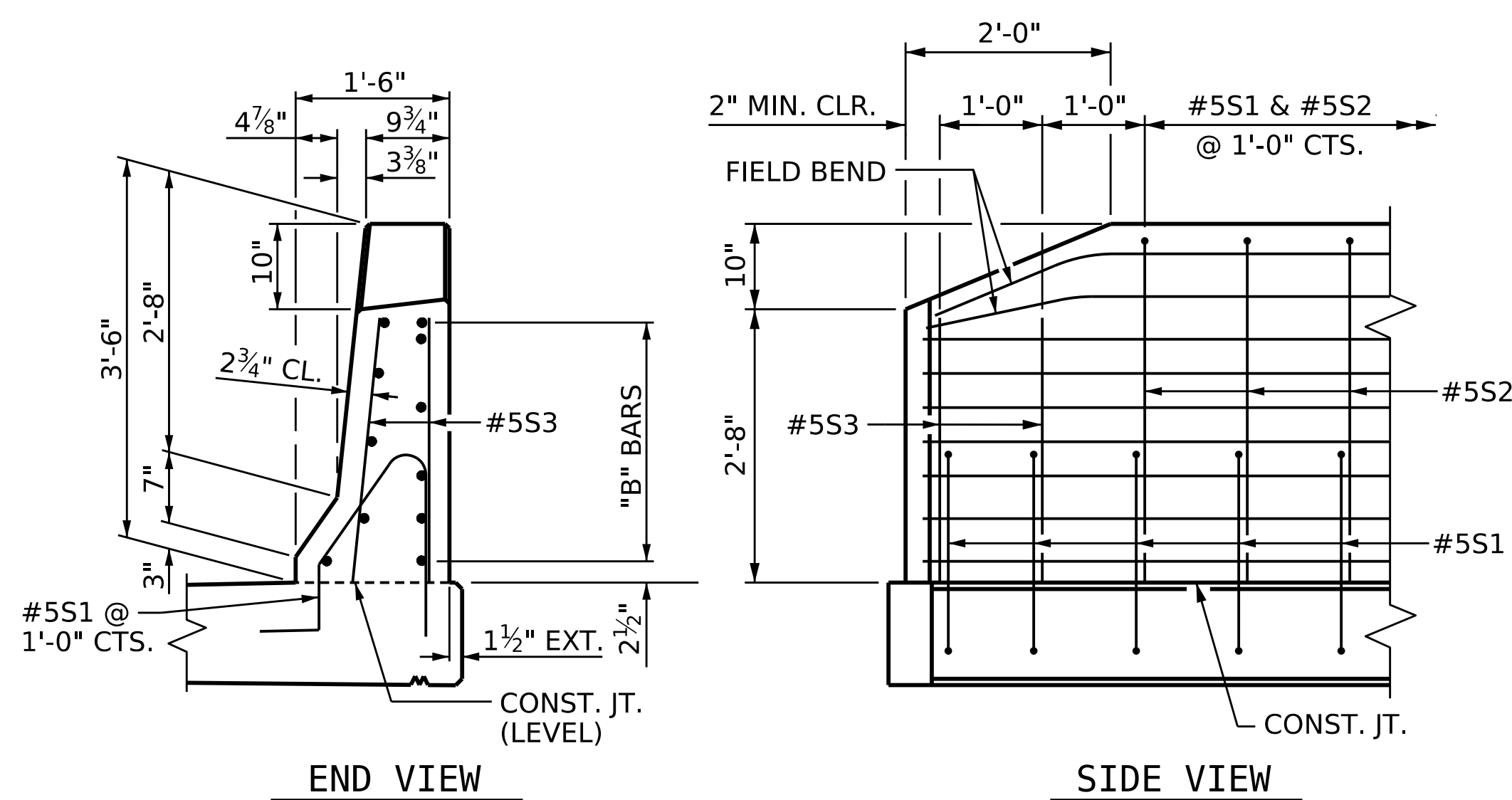
#### BAR TYPES



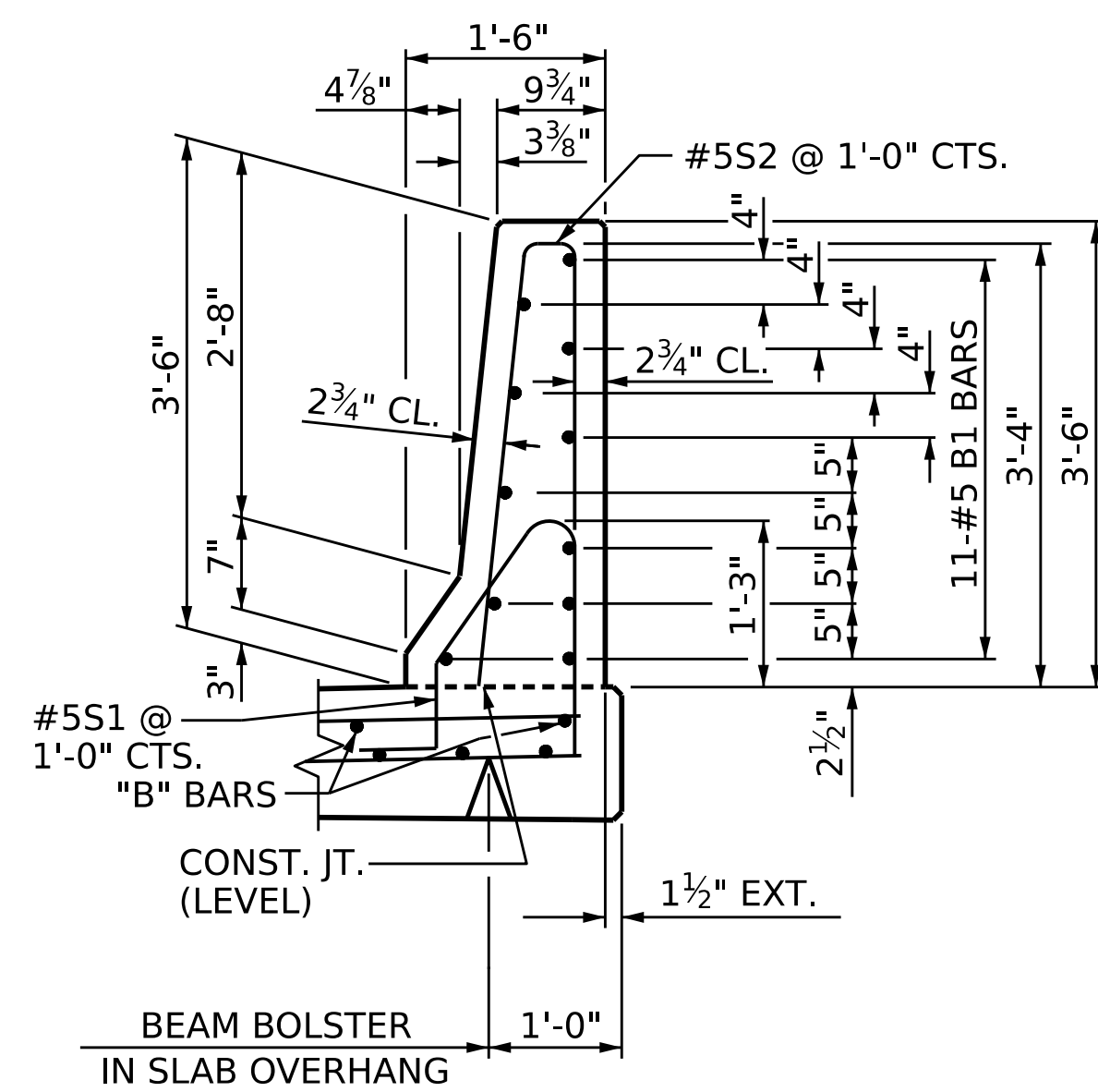
ALL BAR DIMENSIONS ARE OUT TO OUT.



PLAN OF BARRIER RAIL



END OF RAIL DETAILS



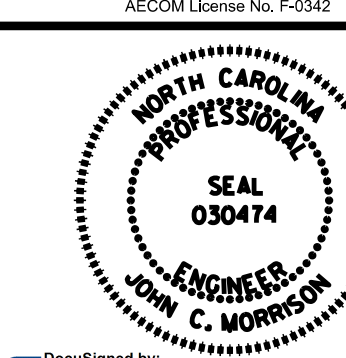
SECTION THRU RAIL

PROJECT NO. BR-0043

ROCKINGHAM COUNTY

STATION: POT 25+80.88 -L-

SHEET 3 OF 3



STATE OF NORTH CAROLINA  
DEPARTMENT OF TRANSPORTATION  
RALEIGH

#### APPROACH SLAB DETAILS

#### REVISIONS

NO.	BY:	DATE:	NO.	BY:	DATE:
1			3		
2			4		

SHEET NO.
S-45
TOTAL SHEETS
45

DOCUMENT NOT CONSIDERED FINAL UNLESS ALL SIGNATURES COMPLETED

DocuSigned by: John C. Morrison 1/31/2023 A2FDE142C82F4A8

ASSEMBLED BY : M.L. CATER	DATE : 01/2023
CHECKED BY : J.C. MORRISON	DATE : 01/2023
DRAWN BY : FCJ 11/88	MAA/GM
CHECKED BY : ARB 11/88	MAA/THC
	REV. 5/18