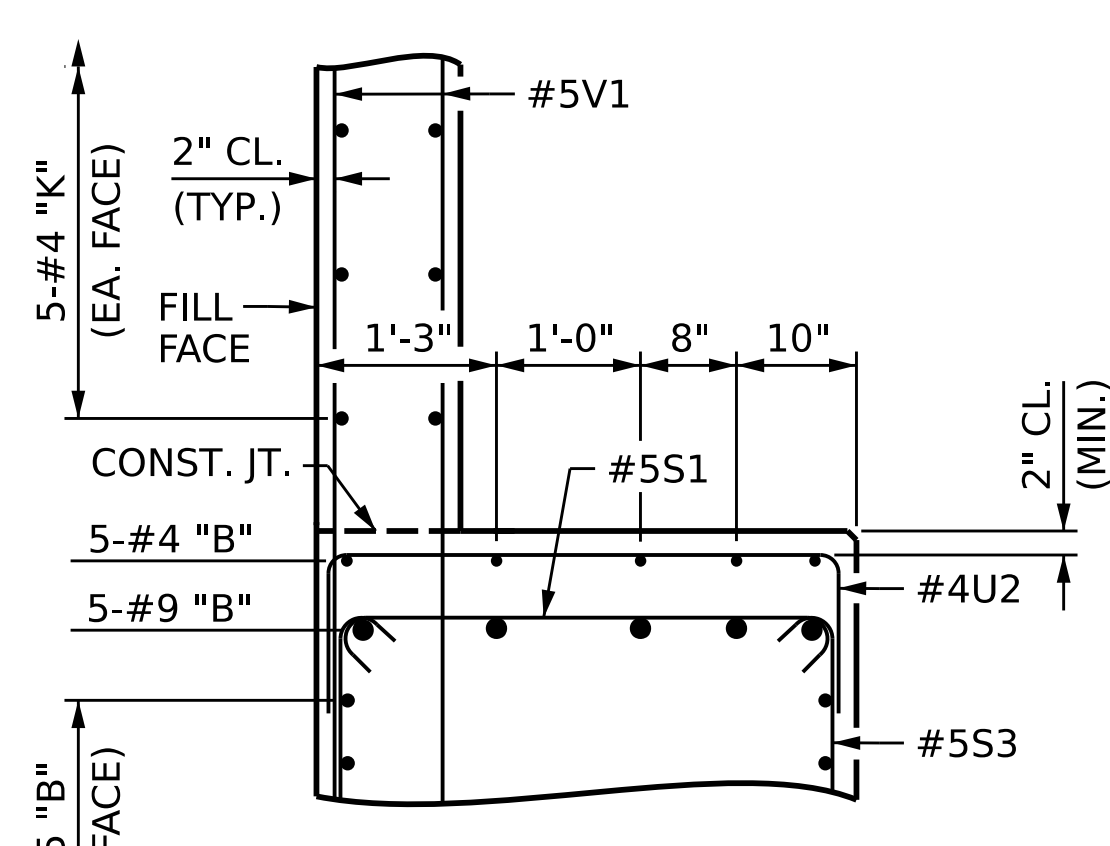
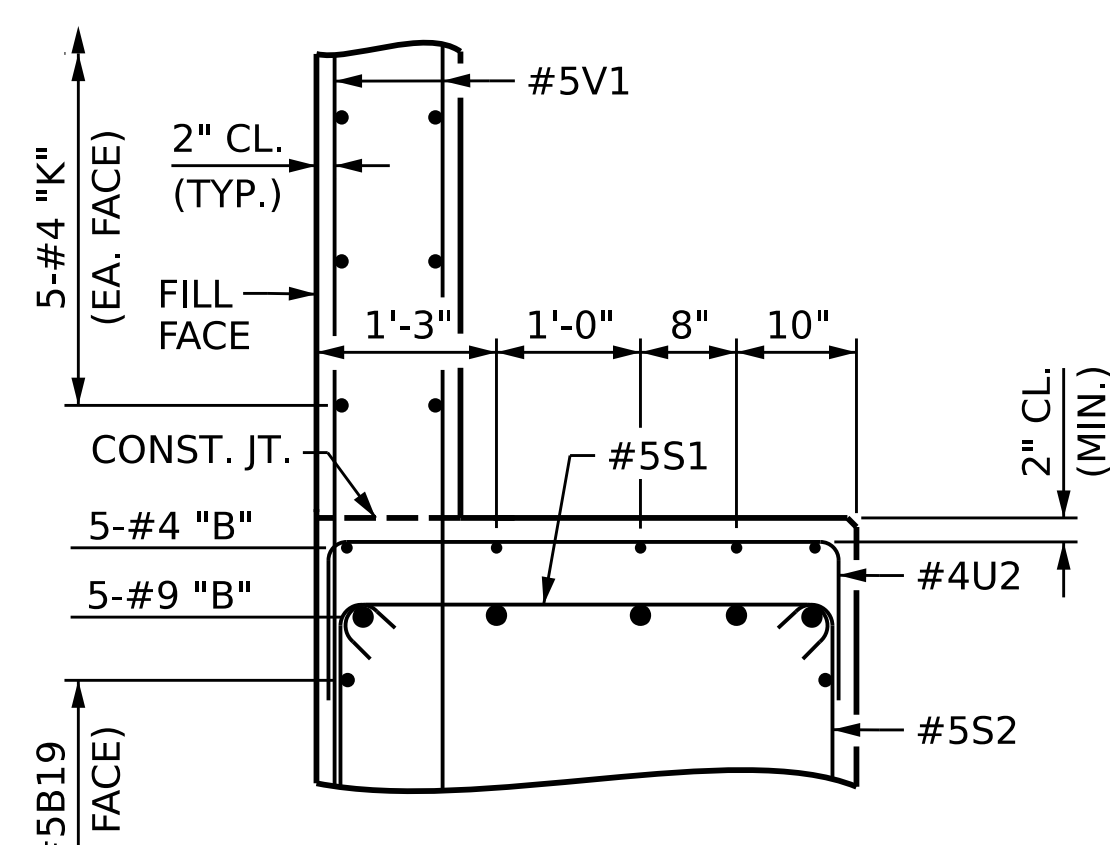


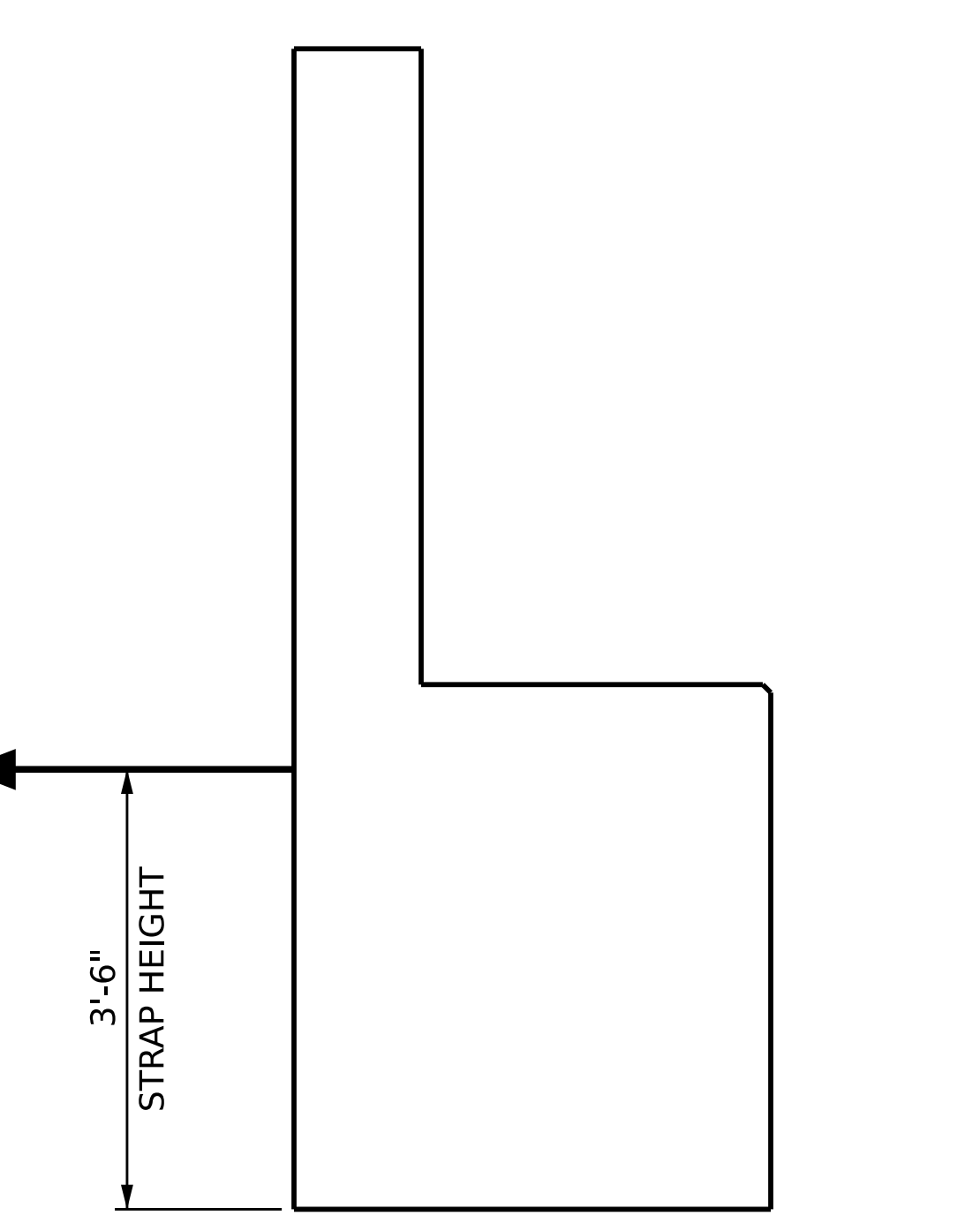
SECTION A-A



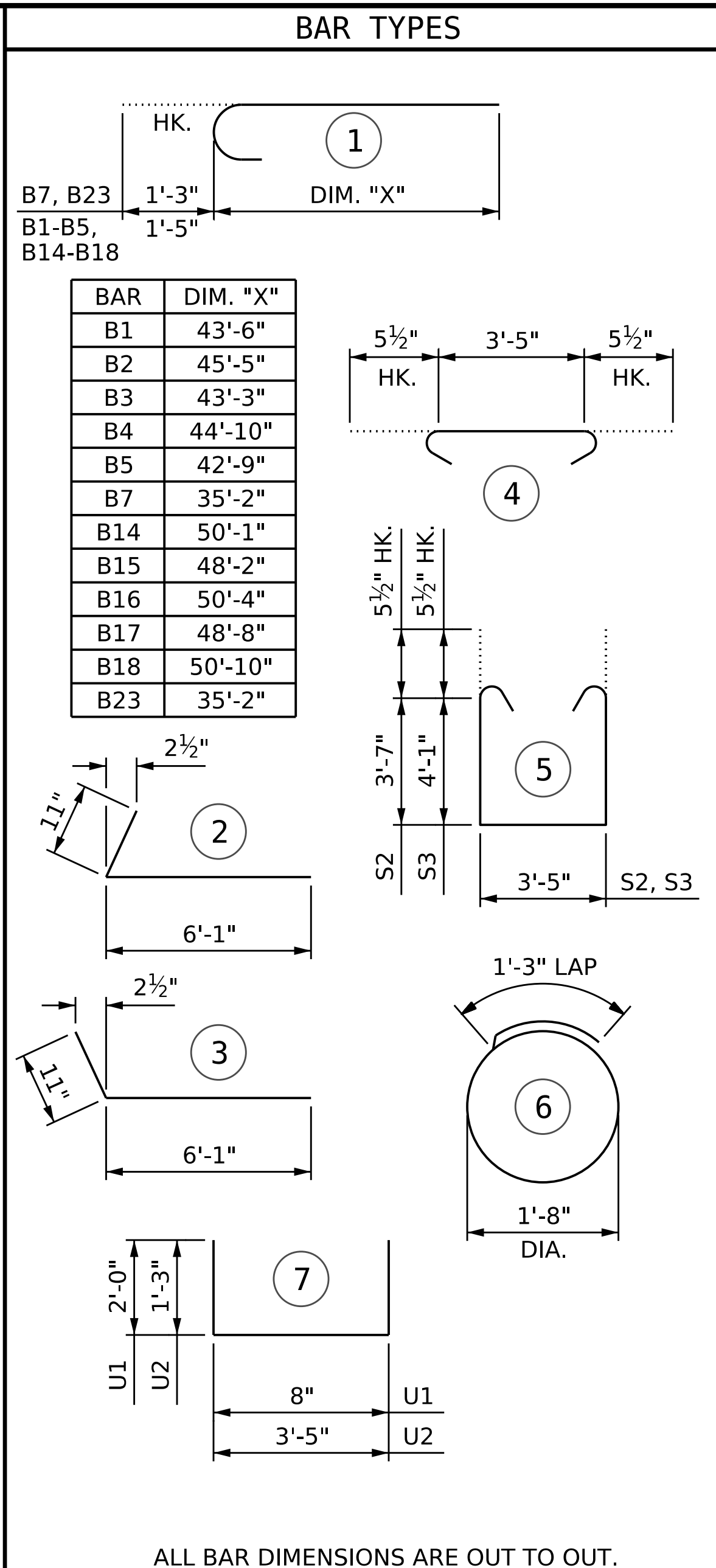
SECTION B-B



SECTION C-C



STRAP FORCE



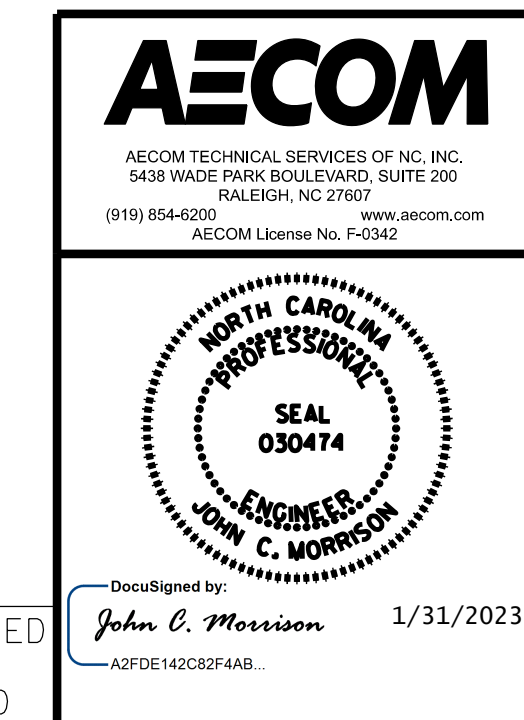
BAR	DIM. "X"
B1	43'-6"
B2	45'-5"
B3	43'-3"
B4	44'-10"
B5	42'-9"
B7	35'-2"
B14	50'-1"
B15	48'-2"
B16	50'-4"
B17	48'-8"
B18	50'-10"
B23	35'-2"

ALL BAR DIMENSIONS ARE OUT TO OUT.

BILL OF MATERIAL											
END BENT 2											
STAGE I					STAGE II						
BAR	NO.	SIZE	TYPE	LENGTH	WEIGHT	BAR	NO.	SIZE	TYPE	LENGTH	WEIGHT
B1	1	10	1	44'-11"	193	B8	5	4	STR	10'-4"	35
B2	1	10	1	46'-10"	202	B14	1	10	1	51'-6"	222
B3	1	10	1	44'-8"	192	B15	1	10	1	49'-7"	213
B4	1	10	1	46'-3"	199	B16	1	10	1	51'-9"	223
B5	1	10	1	44'-2"	190	B17	1	10	1	50'-1"	216
B6	12	5	STR	24'-5"	306	B18	1	10	1	52'-3"	225
B7	5	9	1	36'-5"	619	B19	12	5	STR	27'-6"	344
B8	5	4	STR	10'-4"	35	B20	2	5	STR	19'-11"	42
B9	3	9	STR	16'-8"	170	B21	3	9	STR	24'-3"	247
B10	2	9	STR	18'-8"	127	B22	5	4	STR	14'-5"	48
B11	5	4	STR	4'-10"	16	B23	5	9	1	36'-5"	619
B12	8	4	STR	24'-1"	129	B24	5	4	STR	3'-5"	11
B13	2	5	STR	13'-6"	28	B25	5	4	STR	14'-10"	50
B26	11	4	STR	3'-5"	25	B26	13	4	STR	3'-5"	30
						B27	2	9	STR	22'-3"	151
						B28	8	4	STR	27'-2"	145
H1	24	4	2	7'-0"	112	H2	24	4	3	7'-0"	112
K1	20	4	STR	23'-9"	317	K2	4	4	STR	3'-8"	10
K2	4	4	STR	3'-8"	10	K3	20	4	STR	26'-10"	358
S1	51	5	4	4'-4"	231	S1	56	5	4	4'-4"	253
S2	30	5	5	11'-6"	360	S2	24	5	5	11'-6"	288
S3	21	5	5	12'-6"	274	S3	32	5	5	12'-6"	417
S4	24	4	6	6'-6"	104	S4	28	4	6	6'-6"	122
U1	40	4	7	4'-8"	125	U1	48	4	7	4'-8"	150
U2	11	4	7	5'-11"	43	U2	31	4	7	5'-11"	123
V1	80	5	STR	8'-1"	674	V1	96	5	STR	8'-1"	809
V2	24	5	STR	9'-9"	244	V3	24	5	STR	10'-0"	250
REINFORCING STEEL					4,925 LBS.	REINFORCING STEEL					5,713 LBS.
CLASS A CONCRETE						CLASS A CONCRETE					
POUR #1 (CAP & LOWER WINGWALL)					25.7 C.Y.	POUR #1 (CAP & LOWER WINGWALL)					33.2 C.Y.
POUR #2 (BACKWALL & UPPER WINGWALL)					8.4 C.Y.	POUR #2 (BACKWALL & UPPER WINGWALL)					9.8 C.Y.
TOTAL = 34.1 C.Y.						TOTAL = 43.0 C.Y.					
HP 12X53 STEEL PILES						HP 12X53 STEEL PILES					
No.: 6					LIN. FT. = 290	No.: 7					LIN. FT. = 365
PILE DRIVING EQUIPMENT SETUP FOR HP 12X53 STEEL PILES					EA. 6	PILE DRIVING EQUIPMENT SETUP FOR HP 12X53 STEEL PILES					EA. 7

NOTE: SEE GEOTECHNICAL FOUNDATION TABLES FOR ADDITIONAL PILE INFORMATION

PROJECT NO. BR-0043
 ROCKINGHAM COUNTY
 STATION: POT 25+80.88 -L-
 SHEET 5 OF 5



STATE OF NORTH CAROLINA DEPARTMENT OF TRANSPORTATION RALEIGH					
SUBSTRUCTURE END BENT 2 SECTIONS					
REVISIONS					
NO.	BY:	DATE:	NO.	BY:	DATE:
1			3		
2			4		
SHEET NO.					S-41
TOTAL SHEETS					45

DOCUMENT NOT CONSIDERED FINAL UNLESS ALL SIGNATURES COMPLETED

DRAWN BY : D.R. DRUM DATE : 11/2022
 CHECKED BY : D. RITACCO DATE : 11/2022
 DESIGN ENGINEER OF RECORD: J.C. MORRISON DATE : 12/2022