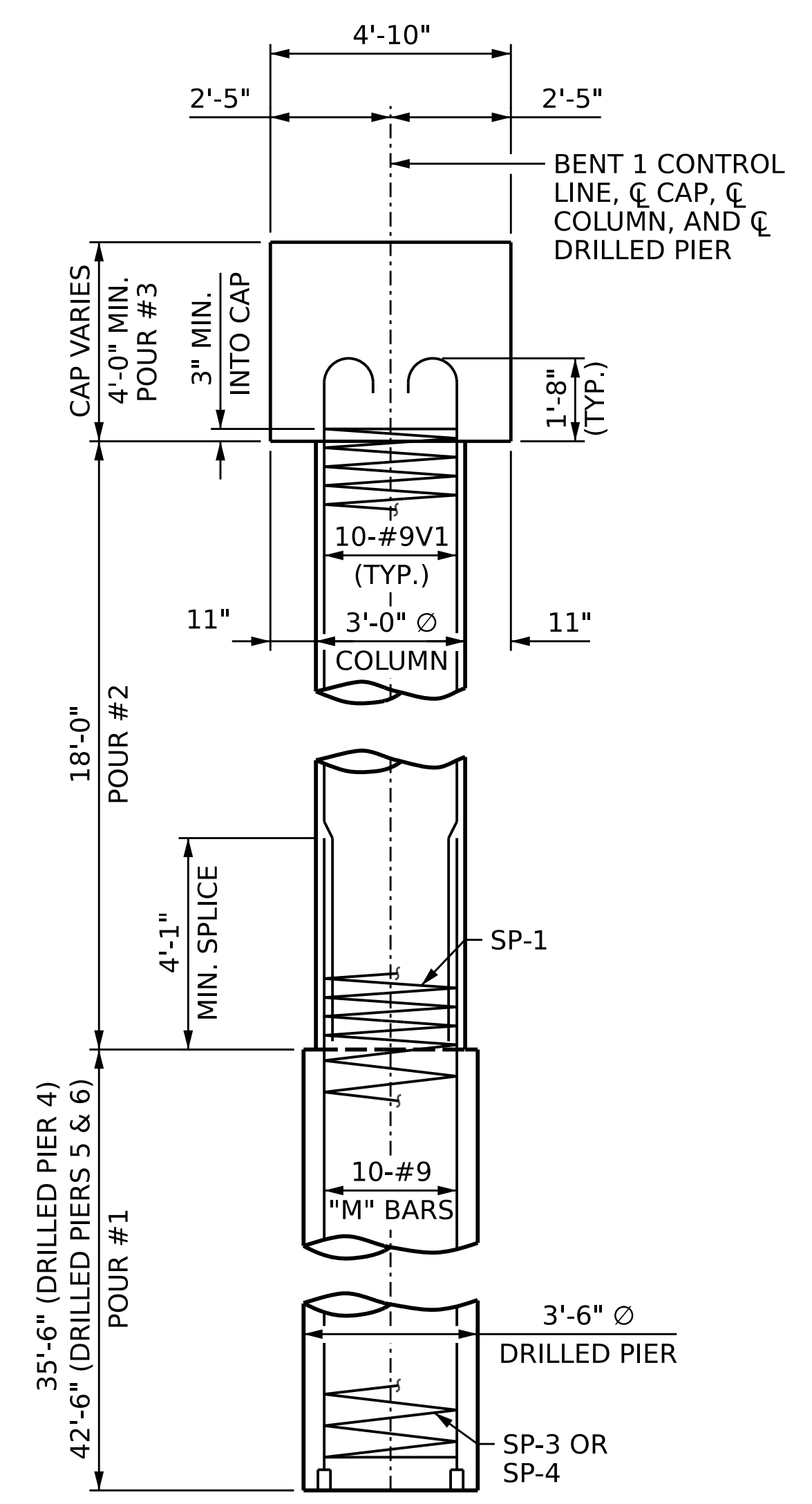
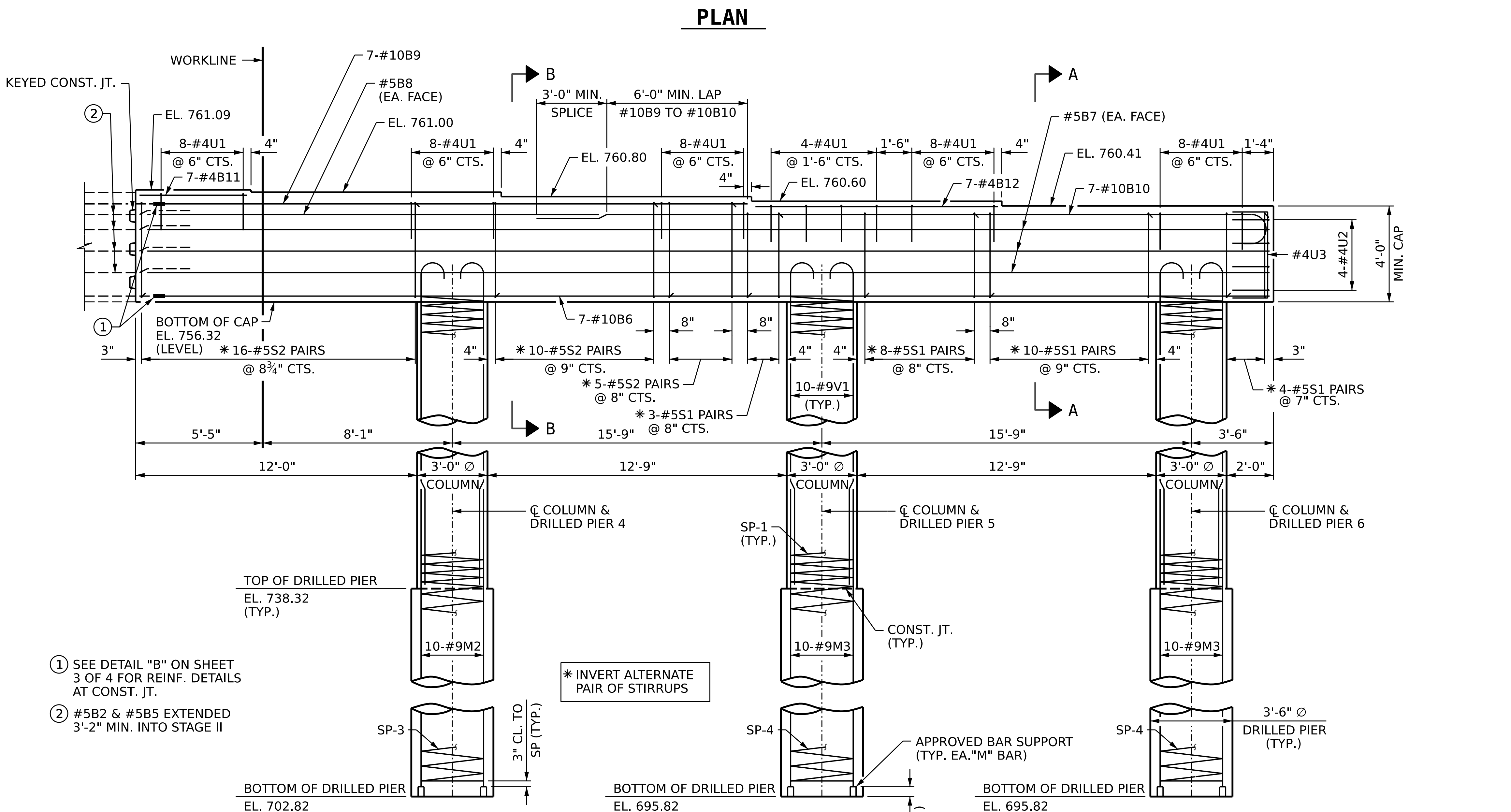


**NOTES:**

FOR NOTES AND DETAIL "A", SEE SHEET 1 OF 4.

FOR CONSTRUCTION JOINT DETAIL, SECTIONS A-A AND B-B, SECTION THRU COLUMN, CAP END VIEW, DETAIL "B", AND SHEAR KEY DETAIL, SEE SHEET 3 OF 4.



- ① SEE DETAIL "B" ON SHEET 3 OF 4 FOR REINF. DETAILS AT CONST. JT.
- ② #5B2 & #5B5 EXTENDED 3'-2" MIN. INTO STAGE II

\* INVERT ALTERNATE PAIR OF STIRRUPS

PROJECT NO. BR-0043  
ROCKINGHAM COUNTY  
STATION: POT 25+80.88 -L-  
SHEET 2 OF 4

**AECOM**  
AECOM TECHNICAL SERVICES OF NC, INC.  
5430 WADE PARK BOULEVARD, SUITE 200  
RALEIGH, NC 27607  
(919) 854-6200 www.aecom.com  
AECOM License No. F0242

SEAL  
030474  
ENGINEER  
JOHN C. MORRISON

1/31/2023

STATE OF NORTH CAROLINA DEPARTMENT OF TRANSPORTATION RALEIGH					
SUBSTRUCTURE <b>BENT 1</b> STAGE II					
REVISIONS					
NO.	BY:	DATE:	NO.	BY:	DATE:
1			3		
2			4		
SHEET NO.					S-34
TOTAL SHEETS					45

DRAWN BY :	D.R. DRUM	DATE :	11/2022
CHECKED BY :	D. RITACCO	DATE :	11/2022
DESIGN ENGINEER OF RECORD:	J.C. MORRISON	DATE :	12/2022

DOCUMENT NOT CONSIDERED FINAL UNLESS ALL SIGNATURES COMPLETED