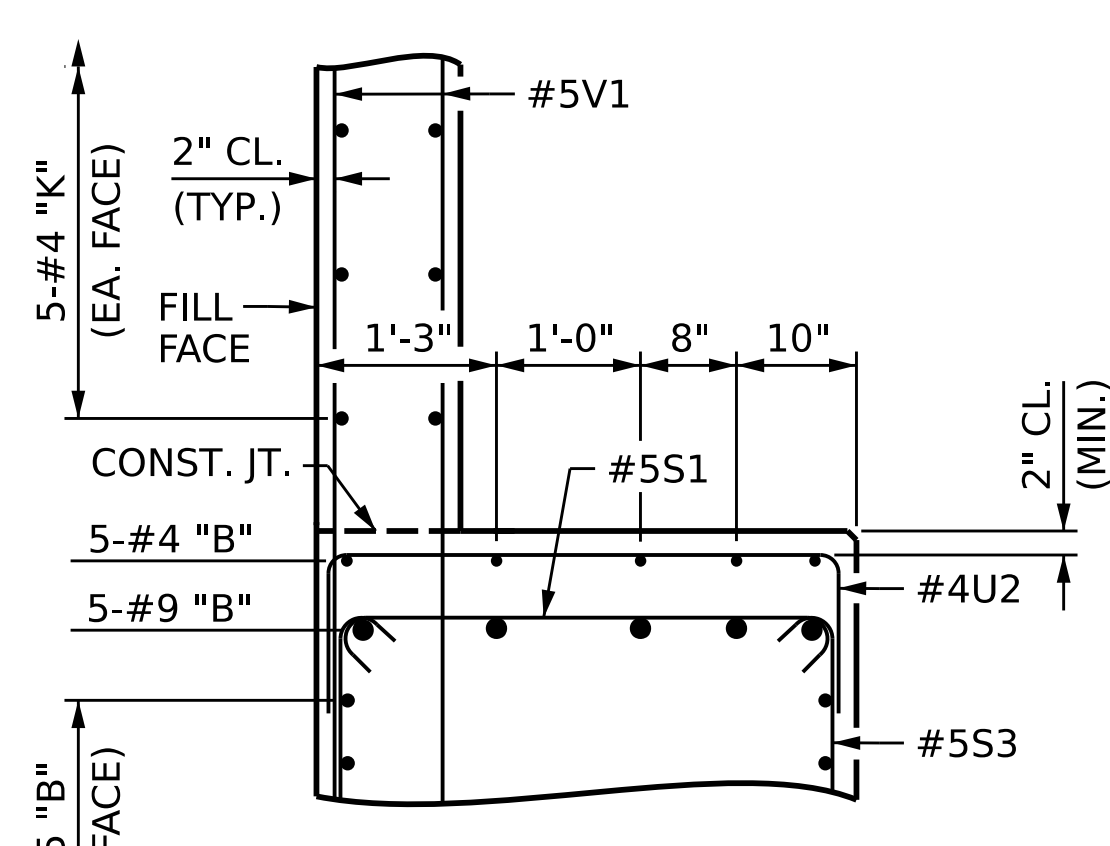
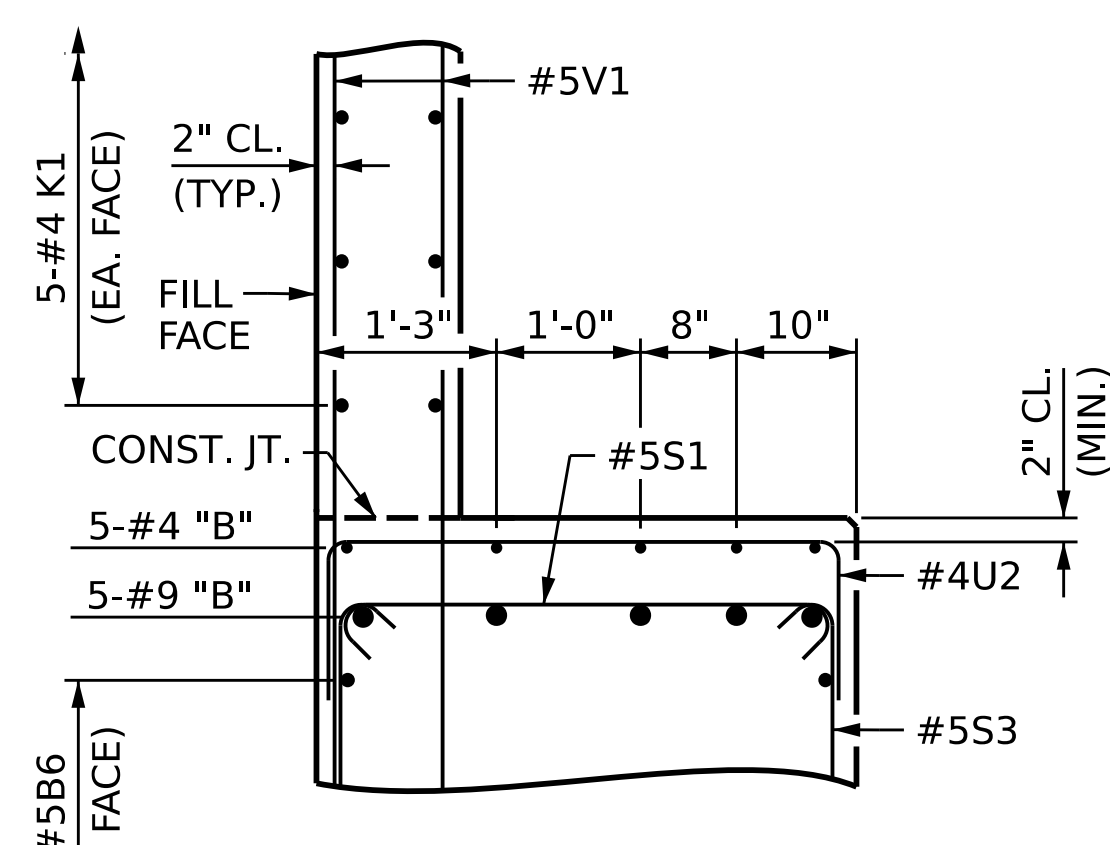


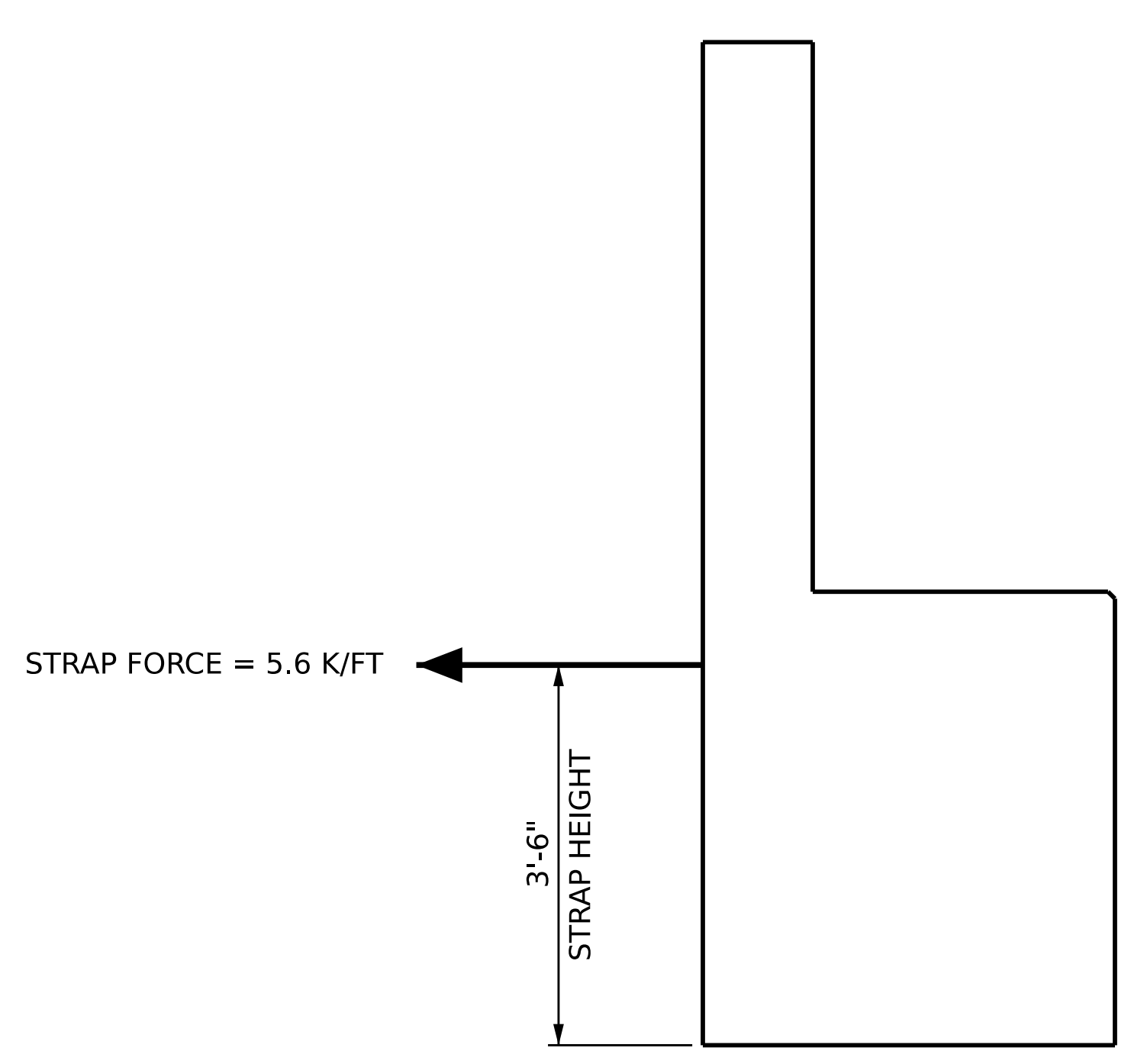
SECTION A-A



SECTION B-B



SECTION C-C



STRAP FORCE

BAR TYPES

BAR	DIM. "X"
B1	41'-10"
B2	43'-11"
B3	42'-1"
B4	44'-5"
B5	42'-7"
B7	35'-0"
B14	51'-9"
B15	49'-8"
B16	51'-6"
B17	49'-1"
B18	51'-0"
B23	35'-4"

ALL BAR DIMENSIONS ARE OUT TO OUT.

BILL OF MATERIAL												
END BENT 1												
STAGE I					STAGE II							
BAR	NO.	SIZE	TYPE	LENGTH	WEIGHT	BAR	NO.	SIZE	TYPE	LENGTH	WEIGHT	
B1	1	10	1	43'-3"	186	B8	10	4	STR	3'-5"	23	
B2	1	10	1	45'-4"	195	B14	1	10	1	53'-2"	229	
B3	1	10	1	43'-6"	187	B15	1	10	1	51'-1"	220	
B4	1	10	1	45'-10"	197	B16	1	10	1	52'-11"	228	
B5	1	10	1	44'-0"	189	B17	1	10	1	50'-6"	217	
B6	12	5	STR	24'-0"	300	B18	1	10	1	52'-5"	226	
B7	5	9	1	36'-3"	616	B19	12	5	STR	27'-11"	349	
B8	5	4	STR	3'-5"	11	B20	2	5	STR	20'-8"	43	
B9	3	9	STR	15'-11"	162	B21	3	9	STR	25'-0"	255	
B10	2	9	STR	17'-11"	122	B22	5	4	STR	4'-6"	15	
B11	5	4	STR	4'-1"	14	B23	5	9	1	36'-7"	622	
B12	8	4	STR	23'-7"	126	B24	13	4	STR	3'-5"	30	
B13	2	5	STR	12'-9"	27	B25	2	9	STR	23'-0"	156	
B24	11	4	STR	3'-5"	25	B26	8	4	STR	27'-8"	148	
H1	24	4	2	7'-0"	112	H2	24	4	3	7'-0"	112	
K1	20	4	STR	22'-11"	306	K2	4	4	STR	3'-8"	10	
K2	4	4	STR	3'-8"	10	K3	20	4	STR	27'-7"	369	
S1	49	5	4	4'-4"	221	S1	58	5	4	4'-4"	262	
S2	30	5	5	11'-6"	360	S2	24	5	5	11'-6"	288	
S3	19	5	5	12'-4"	244	S3	34	5	5	12'-4"	437	
S4	24	4	6	6'-6"	104	S4	28	4	6	6'-6"	122	
U1	38	4	7	4'-8"	118	U1	50	4	7	4'-8"	156	
U2	6	4	7	5'-11"	24	U2	9	4	7	5'-11"	36	
V1	76	5	STR	8'-1"	641	V1	100	5	STR	8'-1"	843	
V2	24	5	STR	9'-11"	248	V3	24	5	STR	9'-9"	244	
REINFORCING STEEL					4,745 LBS.	REINFORCING STEEL						5,640 LBS.
CLASS A CONCRETE						CLASS A CONCRETE						
POUR #1 (CAP & LOWER WINGWALL)					25.4 C.Y.	POUR #1 (CAP & LOWER WINGWALL)						32.5 C.Y.
POUR #2 (BACKWALL & UPPER WINGWALL)					8.1 C.Y.	POUR #2 (BACKWALL & UPPER WINGWALL)						10.2 C.Y.
TOTAL =					33.5 C.Y.	TOTAL =						42.7 C.Y.
HP 12X53 STEEL PILES						HP 12X53 STEEL PILES						
No.: 6					LIN. FT. = 310	No.: 7						LIN. FT. = 335
PILE DRIVING EQUIPMENT SETUP FOR HP 12X53 STEEL PILES					EA. 6	PILE DRIVING EQUIPMENT SETUP FOR HP 12X53 STEEL PILES						EA. 7

NOTE: SEE GEOTECHNICAL FOUNDATION TABLES FOR ADDITIONAL PILE INFORMATION

PROJECT NO. BR-0043
ROCKINGHAM COUNTY
 STATION: POT 25+80.88 -L-

SHEET 5 OF 5

STATE OF NORTH CAROLINA DEPARTMENT OF TRANSPORTATION RALEIGH											
SUBSTRUCTURE END BENT 1 SECTIONS											
REVISIONS										SHEET NO.	
NO.	BY:	DATE:	NO.	BY:	DATE:						S-32
1			3								TOTAL SHEETS 45
2			4								

DOCUMENT NOT CONSIDERED FINAL UNLESS ALL SIGNATURES COMPLETED

DRAWN BY :	D.R. DRUM	DATE :	09/2022
CHECKED BY :	D. RITACCO	DATE :	11/2022
DESIGN ENGINEER OF RECORD:	J.C. MORRISON	DATE :	12/2022