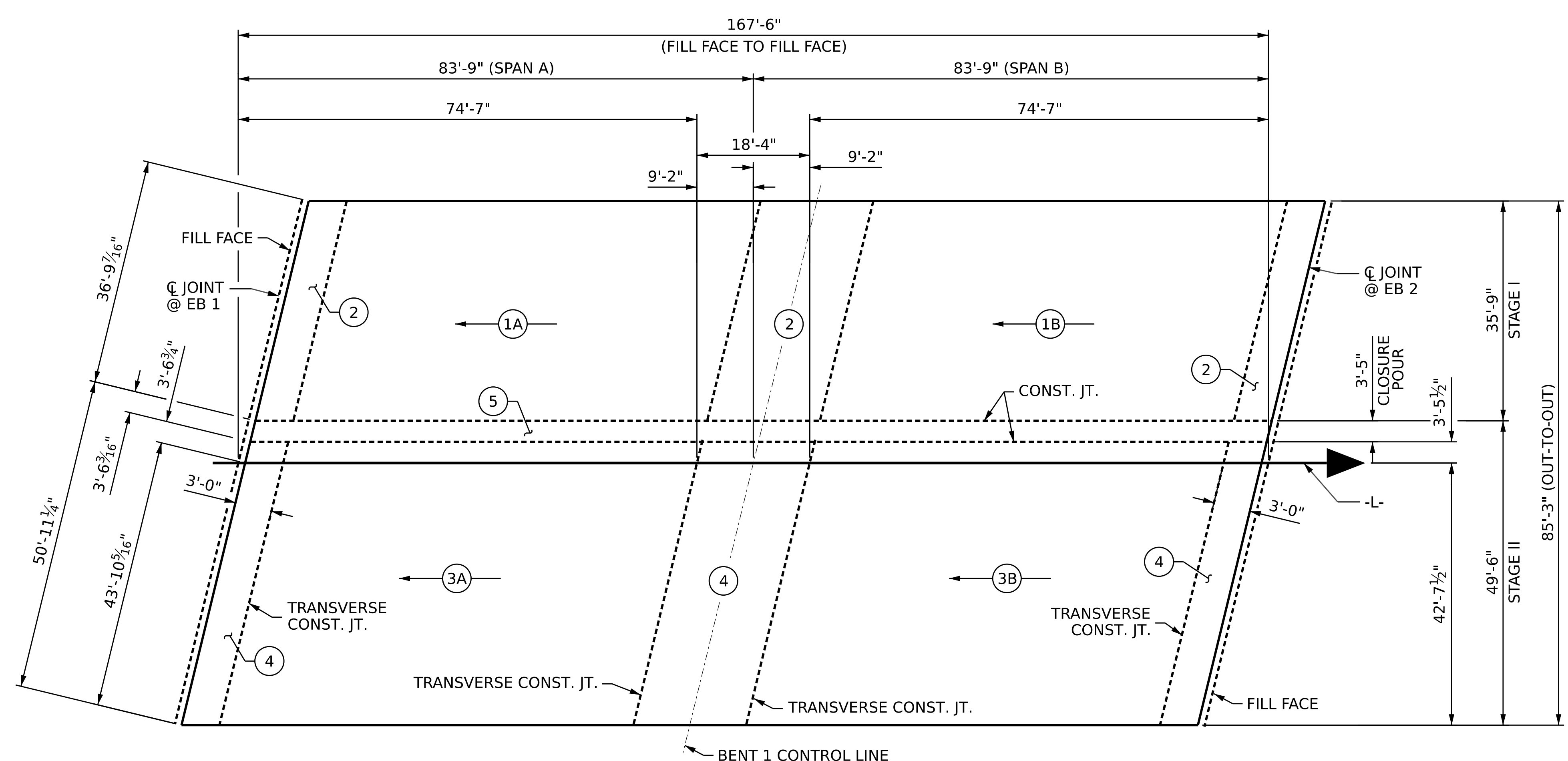


LAYOUT OF COMPUTING AREA OF REINFORCED CONCRETE DECK SLAB

(SQ. FT. = 14,089)

GROOVING BRIDGE FLOORS	
STAGE I	
APPROACH SLABS	1,610 SQ.FT.
BRIDGE DECK	5,380 SQ.FT.
TOTAL	6,990 SQ. FT.
STAGE II	
APPROACH SLABS	2,288 SQ.FT.
BRIDGE DECK	7,648 SQ.FT.
TOTAL	9,936 SQ.FT.
TOTAL	
APPROACH SLABS	3,898 SQ.FT.
BRIDGE DECK	13,028 SQ.FT.
TOTAL	16,926 SQ.FT.



POURING SEQUENCE

FOR STAGE I, POUR #2 SHALL NOT BE POURED UNTIL BOTH ADJACENT POURS #1 REACH A MIN. OF 3,000 PSI. (STAGES I & II SIMILAR)

→ INDICATES POUR NUMBER AND DIRECTION

NOTE:
CONCRETE MEDIAN SHALL NOT BE POURED PRIOR TO COMPLETION OF THE ENTIRE DECK POUR FOR EACH STAGE.
FOR POUR QUANTITIES, SEE SHEET 2 OF 2

PROJECT NO. BR-0043
ROCKINGHAM COUNTY
STATION: POT 25+80.88 -L-
SHEET 1 OF 2

STATE OF NORTH CAROLINA DEPARTMENT OF TRANSPORTATION RALEIGH					
SUPERSTRUCTURE					
BILL OF MATERIAL					
REVISIONS					
NO.	BY:	DATE:	NO.	BY:	DATE:
1			3		
2			4		

SHEET NO.	S-26
TOTAL SHEETS	45

DOCUMENT NOT CONSIDERED FINAL UNLESS ALL SIGNATURES COMPLETED

DRAWN BY :	M.L. CATER	DATE :	11/2022
CHECKED BY :	J.C. MORRISON	DATE :	11/2022
DESIGN ENGINEER OF RECORD:	J.C. MORRISON	DATE :	12/2022