

PLAN OF CONCRETE BARRIER RAIL

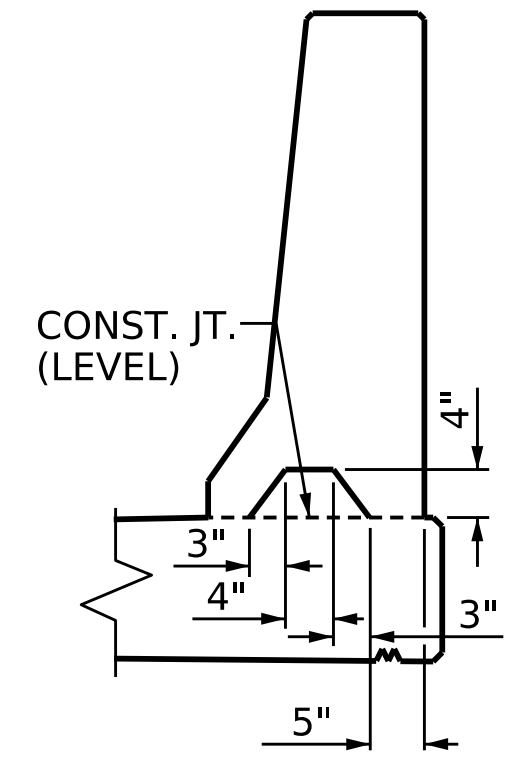
NOTES:

THE BARRIER RAIL IN EACH SPAN SHALL NOT BE CAST UNTIL ALL SLAB CONCRETE IN THAT SPAN HAS BEEN CAST AND HAS REACHED A MINIMUM COMPRESSIVE STRENGTH OF 3,000 PSI.

GROOVED CONTRACTION JOINTS, 1/2" IN DEPTH, SHALL BE TOOLED IN ALL EXPOSED FACES OF THE BARRIER RAIL IN ACCORDANCE WITH ARTICLE 825-10(B) OF THE STANDARD SPECIFICATIONS. THE CONTRACTION JOINT SHALL BE LOCATED AT EACH THIRD POINT BETWEEN BARRIER RAIL EXPANSION JOINTS. ONLY ONE CONTRACTION JOINT IS REQUIRED AT THE MIDPOINT OF BARRIER RAIL SEGMENTS LESS THAN 20 FEET IN LENGTH AND NO CONTRACTION JOINTS ARE REQUIRED FOR THOSE SEGMENTS LESS THAN 10 FEET IN LENGTH.

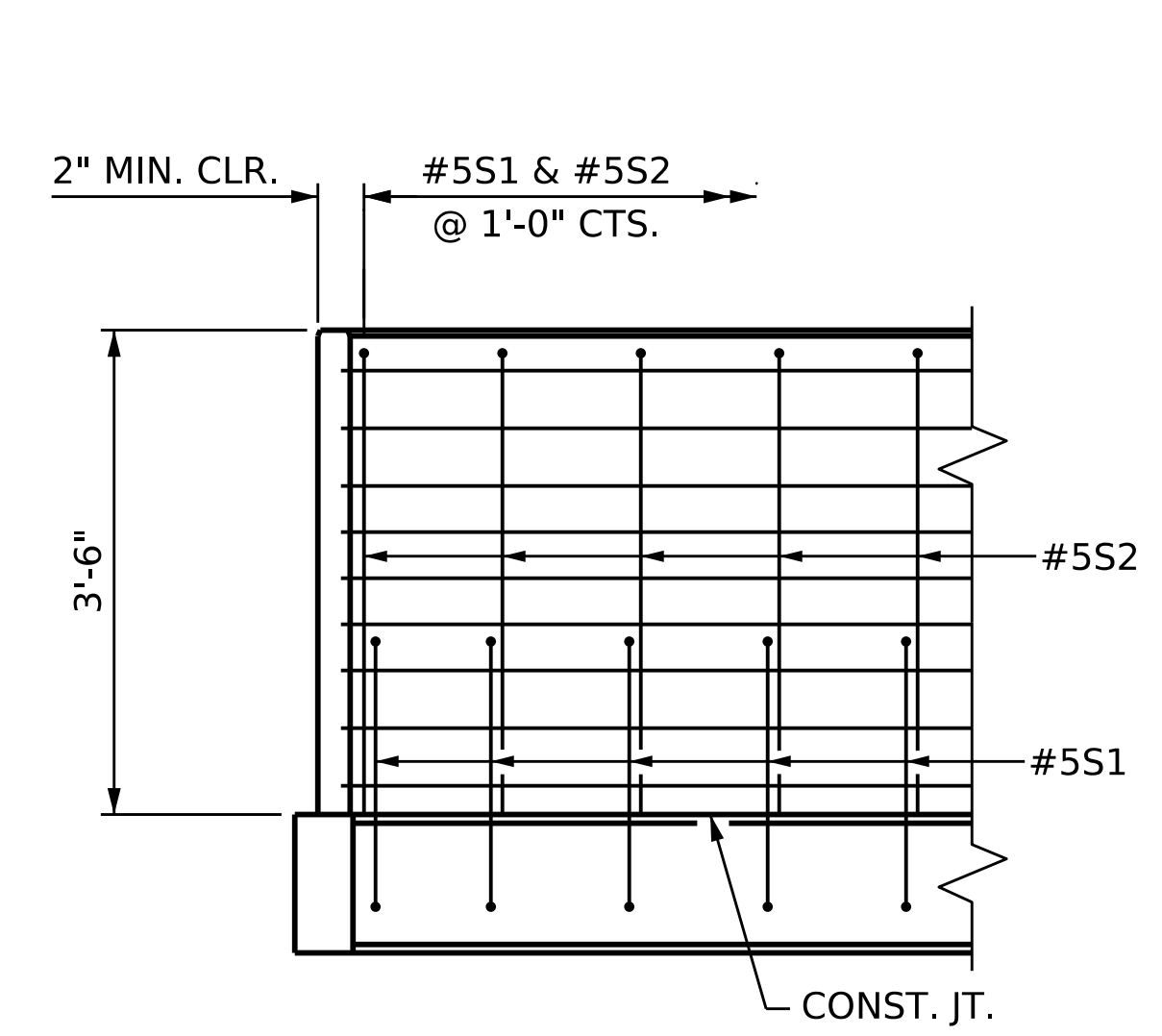
ALL REINFORCING STEEL IN THE CONCRETE BARRIER RAIL SHALL BE EPOXY COATED.

THE #5 S1 AND #5 S2 BARS MAY BE SHIFTED SLIGHTLY AS NECESSARY TO PROVIDE 2" CLEARANCE TO THE 1/2" EXPANSION JOINT.

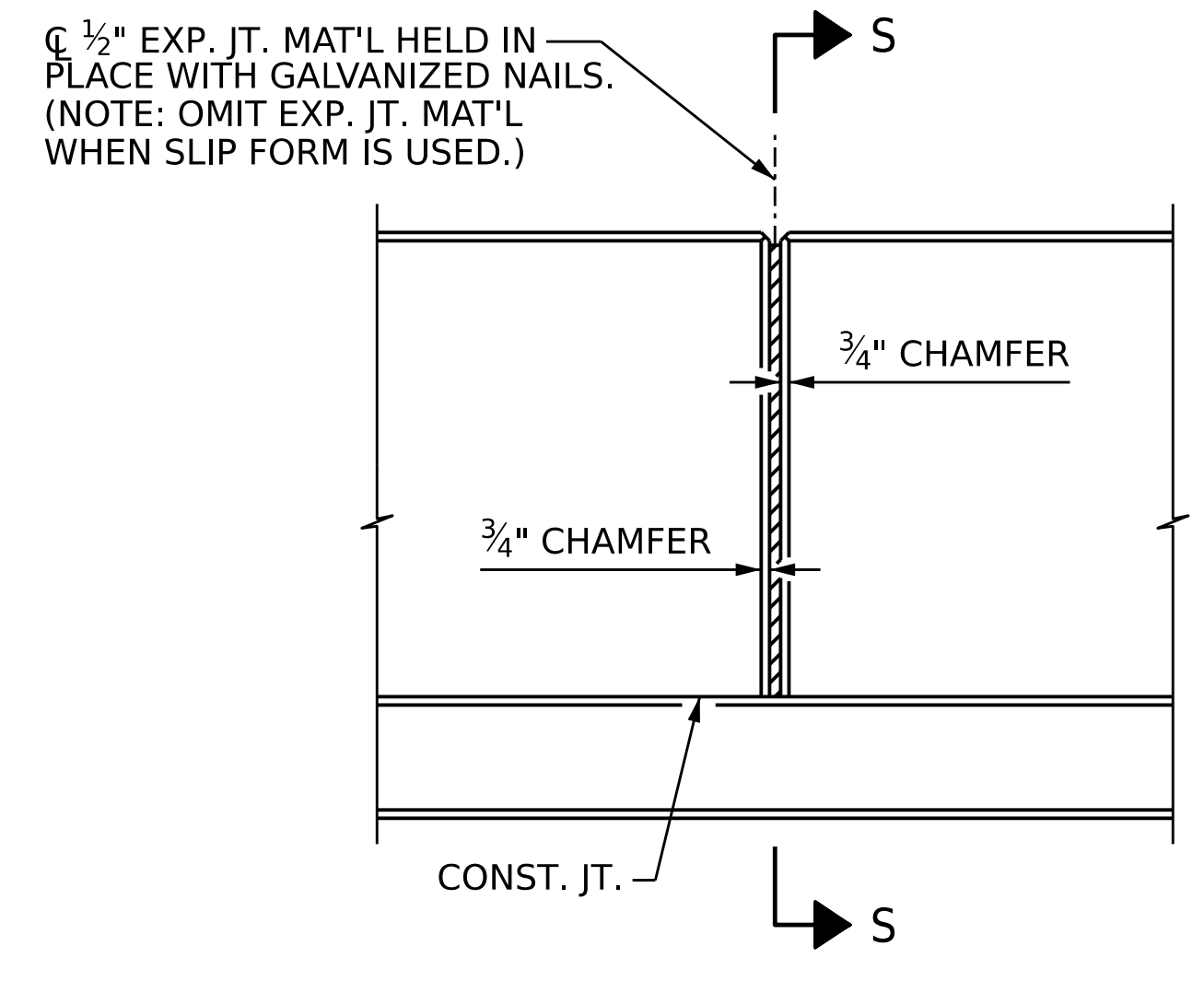


SECTION S-S
AT DAM IN OPEN JOINT
(THIS IS TO BE USED ONLY WHEN SLIP FORM IS USED)

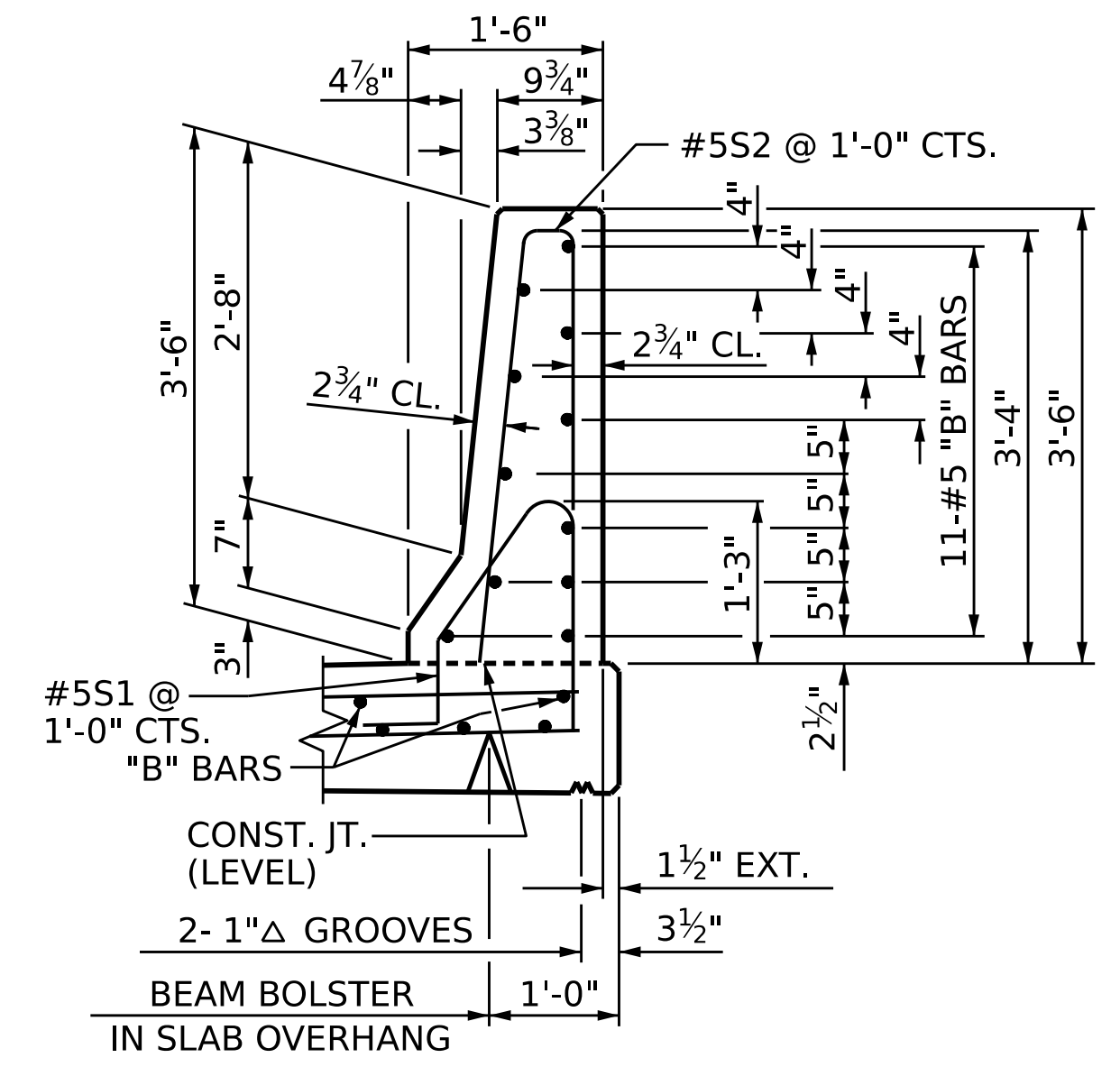
BILL OF MATERIAL					
CONCRETE BARRIER RAIL					
BAR	NO.	SIZE	TYPE	LENGTH	WEIGHT
* B1	88	5	STR	27'-2"	2,493
* B2	88	5	STR	15'-3"	1,400
* S1	332	5	1	4'-7"	1,587
* S2	332	5	2	7'-0"	2,424
* EPOXY COATED REINFORCING STEEL					7,904 LBS.
CLASS AA CONCRETE					44.9 C.Y.
CONCRETE BARRIER RAIL					330.5 L.F.
BAR TYPES					
ALL BAR DIMENSIONS ARE OUT TO OUT.					



END OF RAIL DETAIL



ELEVATION AT EXPANSION JOINTS



SECTION THRU RAIL

PROJECT NO. BR-0043
ROCKINGHAM COUNTY
STATION: POT 25+80.88 -L-

AECOM
AECOM TECHNICAL SERVICES OF NC, INC.
5430 WADE PARK BOULEVARD, SUITE 200
RALEIGH, NC 27607
(919) 854-6200 www.aecom.com
AECOM License No. F0242

DocuSigned by:
John C. Morrison 1/31/2023
A2FDE142C82F44B

SEAL
030474
ENGINEER
JOHN C. MORRISON

STATE OF NORTH CAROLINA
DEPARTMENT OF TRANSPORTATION
RALEIGH
SUPERSTRUCTURE
CONCRETE BARRIER RAIL

REVISIONS						SHEET NO.
NO.	BY:	DATE:	NO.	BY:	DATE:	S-22
1			3			TOTAL SHEETS 45
2			4			

DOCUMENT NOT CONSIDERED FINAL UNLESS ALL SIGNATURES COMPLETED

DRAWN BY: L.A. SHIELDS DATE: 11/2022
CHECKED BY: J.C. MORRISON DATE: 11/2022
DESIGN ENGINEER OF RECORD: J.C. MORRISON DATE: 12/2022