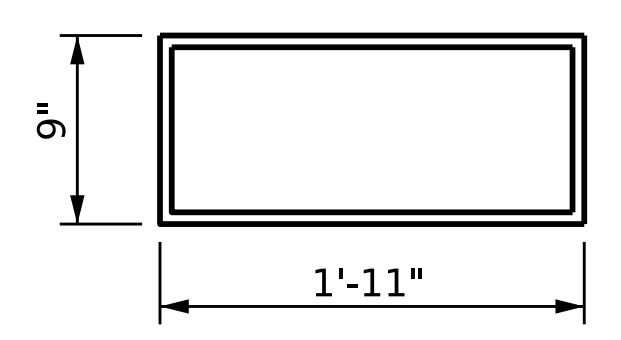
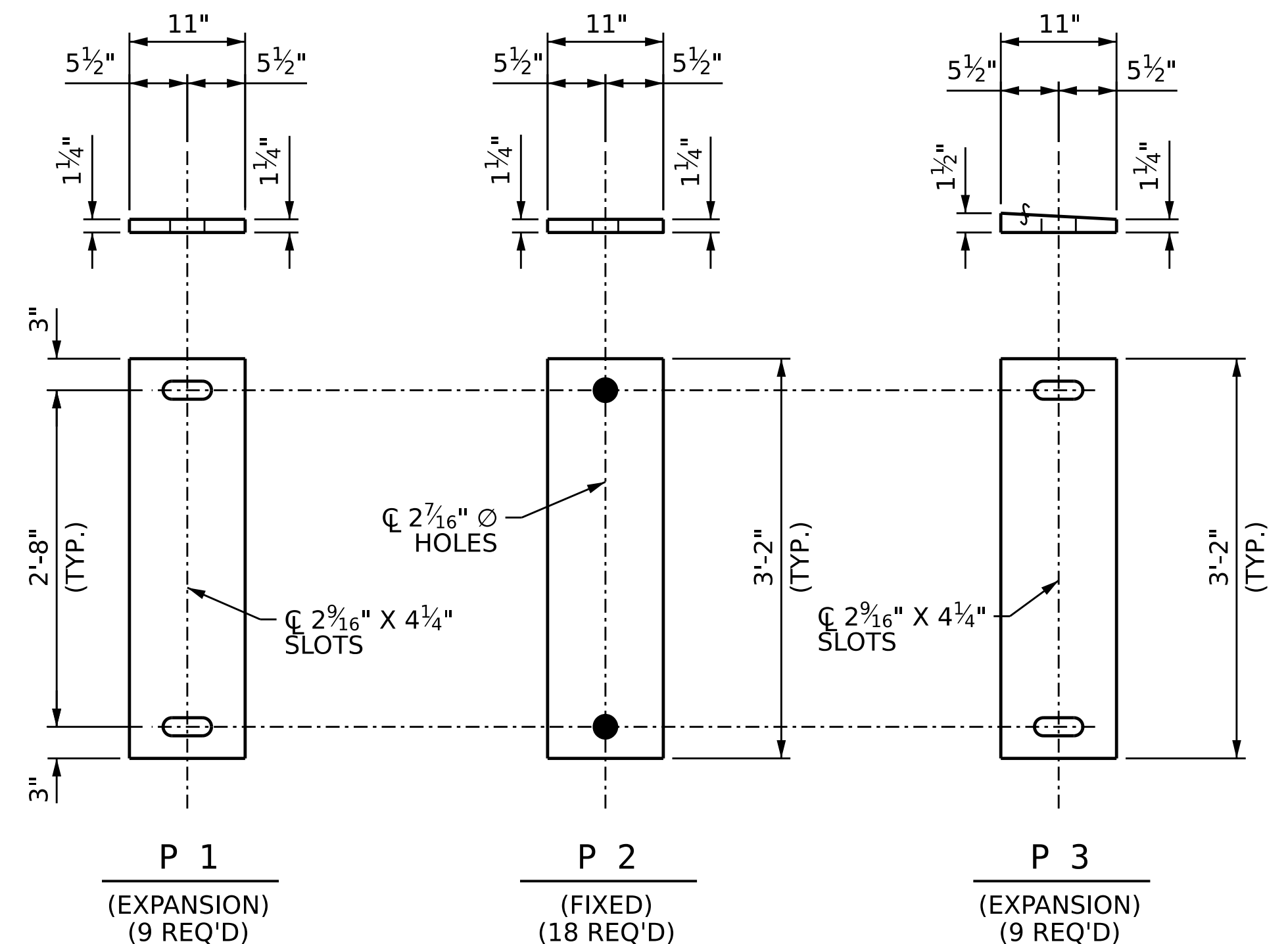


TYPICAL SECTION OF ELASTOMERIC BEARINGS

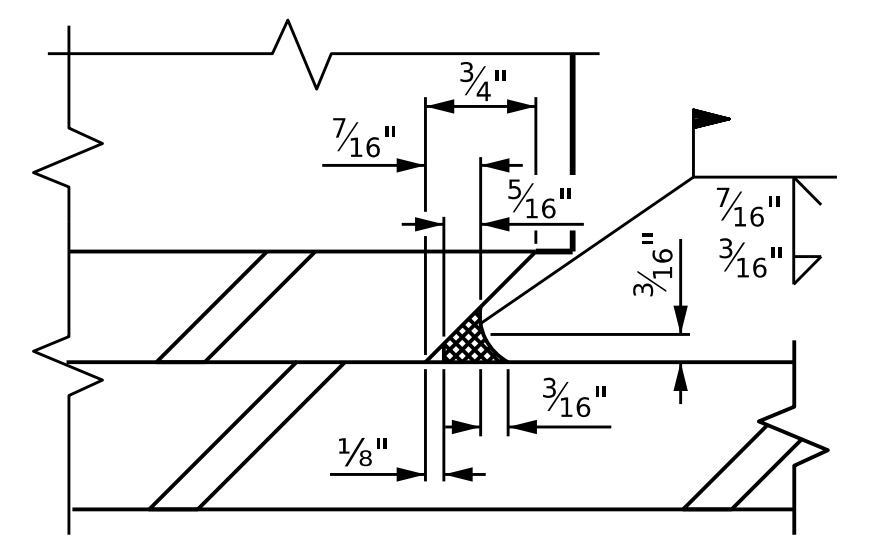


PLAN VIEW OF ELASTOMERIC BEARING
TYPE V

MAXIMUM ALLOWABLE SERVICE LOADS	
D.L.+L.L. (NO IMPACT)	
TYPE V	365 K



SOLE PLATE DETAILS ("P")



DETAIL "A"

PROJECT NO. BR-0043
ROCKINGHAM COUNTY
 STATION: POT 25+80.88 -L-

AECOM
AECOM TECHNICAL SERVICES OF NC, INC.
 5430 WADE PARK BOULEVARD, SUITE 200
 RALEIGH, NC 27607
 (919) 854-6200 www.aecom.com
 AECOM License No. F0242

DocuSigned by:
John C. Morrison 1/31/2023
AZPDE142CB2F44B...

STATE OF NORTH CAROLINA
 DEPARTMENT OF TRANSPORTATION
 RALEIGH

STANDARD
ELASTOMERIC BEARING DETAILS
 PRESTRESSED CONCRETE GIRDER
 SUPERSTRUCTURE

REVISIONS						SHEET NO.
NO.	BY:	DATE:	NO.	BY:	DATE:	S-21
1			3			TOTAL SHEETS
2			4			45

DRAWN BY : L.A. SHIELDS DATE : 10/2022
 CHECKED BY : S. NATARAJAN DATE : 10/2022
 DESIGN ENGINEER OF RECORD: J.C. MORRISON DATE : 12/2022

DOCUMENT NOT CONSIDERED
 FINAL UNLESS ALL
 SIGNATURES COMPLETED