

## DEAD LOAD DEFLECTION TABLE FOR GIRDERS

0.6" DIA. LOW-RELAXATION STRANDS	GIRDER 1																					
TWENTIETH POINTS	BRG.	0.05	0.10	0.15	0.20	0.25	0.30	0.35	0.40	0.45	0.50	0.55	0.60	0.65	0.70	0.75	0.80	0.085	0.90	0.95	BRG.	
CAMBER (GIRDER ALONE IN PLACE)	↑	0.000	0.017	0.033	0.049	0.062	0.075	0.086	0.095	0.101	0.105	0.106	0.105	0.101	0.095	0.086	0.075	0.063	0.049	0.033	0.017	0.000
* DEFLECTION DUE TO SUPERIMPOSED DL	↓	0.000	0.013	0.023	0.036	0.046	0.057	0.064	0.071	0.075	0.078	0.078	0.075	0.071	0.064	0.057	0.046	0.036	0.023	0.013	0.000	0.000
FINAL CAMBER	↑	0	1/16"	1/8"	1/8"	3/16"	1/4"	1/4"	5/16"	5/16"	5/16"	5/16"	5/16"	5/16"	1/4"	1/4"	3/16"	1/8"	1/8"	1/16"	0	0

## NOTES

ALL PRESTRESSING STRANDS SHALL BE 7-WIRE LOW-RELAXATION GRADE 270 STRANDS AND SHALL CONFORM TO AASHTO M203 EXCEPT FOR SAMPLING REQUIREMENTS WHICH SHALL BE IN ACCORDANCE WITH THE STANDARD SPECIFICATIONS.

ALL REINFORCING STEEL SHALL BE GRADE 60.

APPLY EPOXY PROTECTIVE COATING TO END OF GIRDER SURFACES INDICATED IN ELEVATION VIEW.

EMBEDDED PLATE "B-1" SHALL BE GALVANIZED IN ACCORDANCE WITH THE STANDARD SPECIFICATIONS.

ANCHOR STUDS SHALL CONFORM TO AASHTO M169 GRADES 1010 THROUGH 1020 OR APPROVED EQUAL, AND SHALL MEET THE TYPE "B" REQUIREMENTS OF SUBSECTION 7.3 OF THE ANSI/AASHTO/AWS D1.5 BRIDGE WELDING CODE.

AT ENDS OF GIRDERS TO BE EMBEDDED IN CONCRETE DIAPHRAGMS OR END WALLS, PRESTRESSING STRANDS MAY EXTEND A MAXIMUM OF 2" BEYOND THE GIRDER ENDS. OTHERWISE, PRESTRESSING STRANDS SHALL BE CUT FLUSH WITH THE GIRDER ENDS.

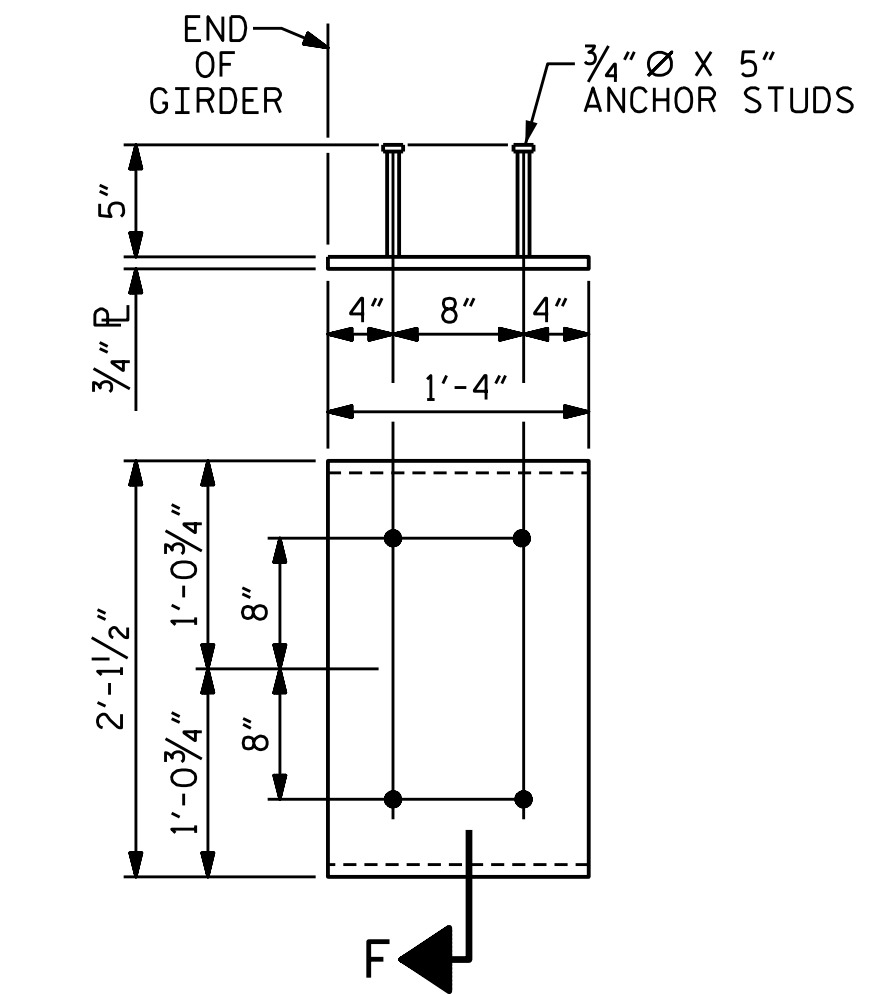
THE TRANSFER OF LOAD FROM THE ANCHORAGES TO THE GIRDER SHALL BE DONE WHEN CONCRETE HAS REACHED A COMPRESSIVE STRENGTH OF NOT LESS THAN 6400 PSI.

DEPENDING ON THE TYPE OF SYSTEM USED TO SUPPORT THE DECK SLAB FORMS, PRESET ANCHORS MAY BE NECESSARY IN THE PRESTRESSED CONCRETE GIRDER.

THE TOP SURFACE OF THE GIRDER, EXCLUDING THE OUTSIDE 4" AND SHADED AREA NEAR BENT, SHALL BE RAKED TO A DEPTH OF 1/4".

WHEN DRAPED STRANDS ARE DETAILED, THE LONGITUDINAL LOCATION OF THE HOLD DOWN DEVICES SHALL BE WITHIN 6" OF THE LOCATION SHOWN AND THE CENTER OF GRAVITY OF THE GROUP OF DRAPED STRANDS SHALL BE LOCATED WITHIN 1/2" OF THE THEORETICAL LOCATION SHOWN.

THE CONTRACTOR HAS THE OPTION TO PROVIDE, AT NO ADDITIONAL COST TO THE DEPARTMENT, 2 ADDITIONAL STRANDS AT THE TOP OF THE GIRDER TO FACILITATE TYING OF THE REINFORCING STEEL. THESE STRANDS SHALL BE PULLED TO A LOAD OF 4500 lbs.



**EMBEDDED PLATE "B-1"  
DETAILS FOR AASHTO  
TYPE IV GIRDER**  
(2 REQ'D PER GIRDER)

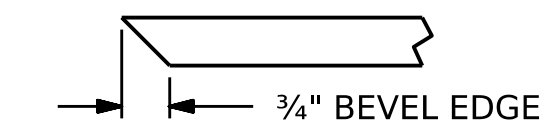
PROJECT NO. BR-0043

ROCKINGHAM COUNTY

STATION: POT 25+80.88 -L-

SHEET 2 OF 3

\* INCLUDES FUTURE WEARING SURFACE IN SUPERIMPOSED DEAD LOAD  
ALL VALUES ARE SHOWN IN FEET (DECIMAL FORM), EXCEPT "FINAL CAMBER", WHICH IS SHOWN IN INCHES (FRACTION FORM)



**SECTION "F"**  
(SEE NOTES)

DRAWN BY : L.A. SHIELDS	DATE : 10/2022
CHECKED BY : S. NATARAJAN	DATE : 10/2022
DESIGN ENGINEER OF RECORD : J.C. MORRISON	DATE : 12/2022

DOCUMENT NOT CONSIDERED  
FINAL UNLESS ALL  
SIGNATURES COMPLETED

AECOM

AECOM TECHNICAL SERVICES OF INC. INC.  
5430 WADE PARK BOULEVARD, SUITE 200  
RALEIGH, NC 27607  
(919) 854-6200 www.aecom.com  
AECOM License No. F0242

NORTH CAROLINA  
PROFESSIONAL  
SEAL  
030474  
ENGINEER  
JOHN C. MORRISON

DocuSigned by:  
*John C. Morrison* 1/31/2023  
A2FDE142C82F44B

STATE OF NORTH CAROLINA  
DEPARTMENT OF TRANSPORTATION  
RALEIGH

STANDARD

PRESTRESSED CONCRETE  
GIRDER CONTINUOUS FOR  
LIVE LOAD DETAILS

REVISIONS						SHEET NO.
NO.	BY:	DATE:	NO.	BY:	DATE:	S-19
1			3			TOTAL SHEETS
2			4			45