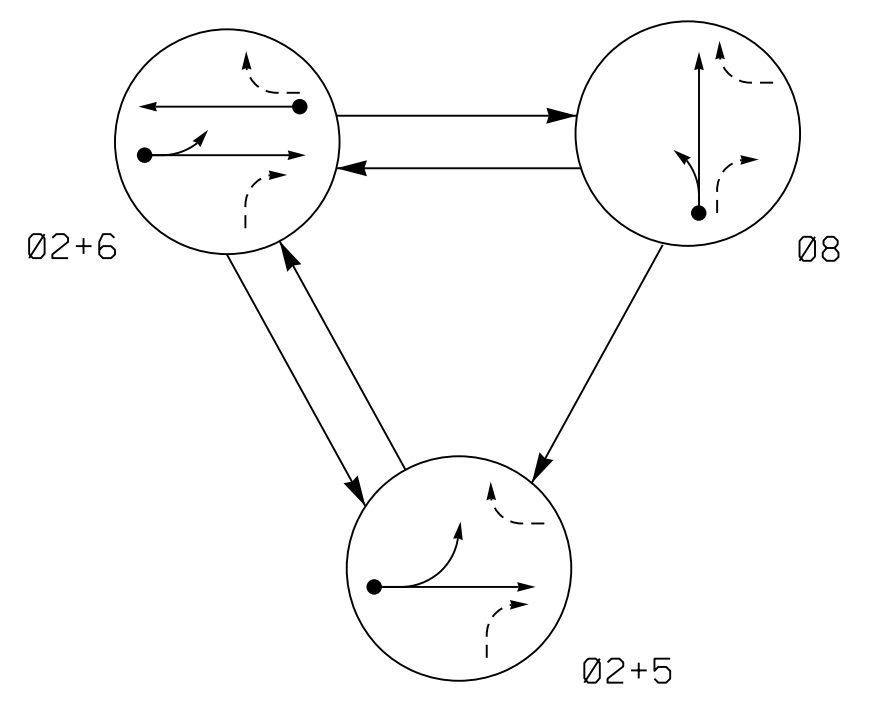


PHASING DIAGRAM



PHASING DIAGRAM DETECTION LEGEND

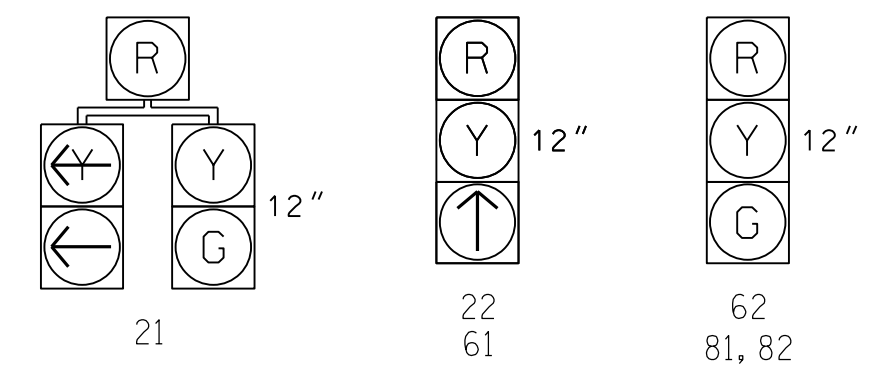
- → DETECTED MOVEMENT
- → UNDETECTED MOVEMENT (OVERLAP)
- UNSIGNALIZED MOVEMENT
- ↔ PEDESTRIAN MOVEMENT

TABLE OF OPERATION

SIGNAL FACE	PHASE			
	02+5	02+6	08	FLASH
21	G	G	R	Y
22	↑	↑	R	Y
61	R	↑	R	Y
62	R	G	R	Y
81, 82	R	R	G	R

SIGNAL FACE I.D.

All Heads L.E.D.



MAXTIME DETECTOR INSTALLATION CHART

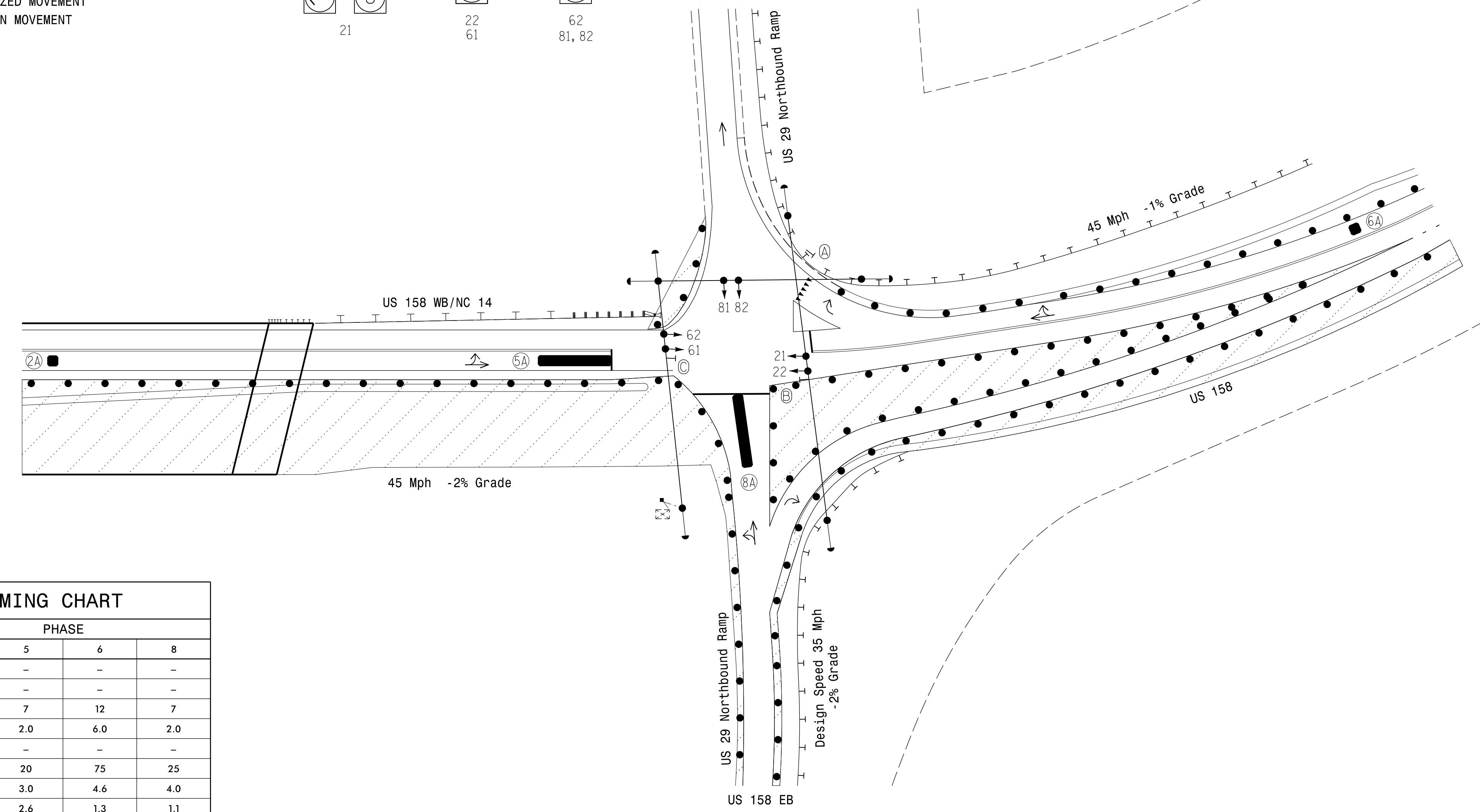
LOOP	SIZE (FT)	DISTANCE FROM STOPBAR (FT)	TURNS	NEW LOOP	PROGRAMMING									
					CALL PHASE	DELAY TIME	EXTEND TIME	EXTEND	ADDED INITIAL	QUEUE	CALL	PASSAGE 2	SYSTEM LOOP	NEW CARD
2A*	6X6	300	*	*	2	-	-	X	X	-	X	-	-	*
5A*	6X40	0	*	*	5	10	-	X	-	-	X	-	-	*
6A*	6X6	300	*	*	6	-	-	X	X	-	X	-	-	*
8A*	6X40	0	*	*	8	-	-	X	-	-	X	-	-	*

* Video Detection Zone

3 Phase Fully Actuated (Isolated)

NOTES

- Refer to "Roadway Standard Drawings NCDOT" dated January 2018 and "Standard Specifications for Roads and Structures" dated January 2018.
- Do not program signal for late night flashing operation unless otherwise directed by the Engineer.
- Phase 5 may be lagged.
- Set all detector units to presence mode.
- Reposition existing signal heads numbered 21, 22, 61, 62, 81, and 82.
- Reposition existing signs B and C.
- Remove existing signal head numbered 63.
- Existing signal heads numbered 21, 22, 61, and 62 have backplates.
- This intersection uses video detection. Install detectors according to the manufacturer's instructions to achieve the desired detection.



MAXTIME TIMING CHART

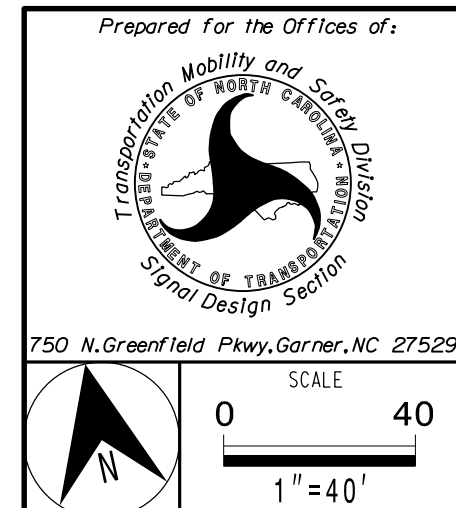
FEATURE	PHASE			
	2	5	6	8
Walk *	-	-	-	-
Ped Clear *	-	-	-	-
Min Green	12	7	12	7
Passage *	6.0	2.0	6.0	2.0
Passage 2 *	-	-	-	-
Max 1 *	75	20	75	25
Yellow Change	4.7	3.0	4.6	4.0
Red Clear	1.4	2.6	1.3	1.1
Added Initial *	2.5	-	2.5	-
Maximum Initial *	34	-	34	-
Time Before Reduction *	15	-	15	-
Time To Reduce *	30	-	30	-
Minimum Gap	3.0	-	3.0	-
Advance Walk	-	-	-	-
Non Lock Detector	-	X	-	X
Vehicle Recall	MIN RECALL	-	MIN RECALL	-
Dual Entry	-	-	-	-

* These values may be field adjusted. Do not adjust Min Green and Extension times for phases 2 and 6 lower than what is shown. Min Green for all other phases should not be lower than 4 seconds.

LEGEND

PROPOSED	EXISTING
○ → Traffic Signal Head	● → Traffic Signal Head
○ → Modified Signal Head	N/A
□ → Pedestrian Signal Head With Push Button & Sign	□ → Pedestrian Signal Head With Push Button & Sign
□ → Signal Pole with Guy	□ → Signal Pole with Guy
□ → Signal Pole with Sidewalk Guy	□ → Signal Pole with Sidewalk Guy
□ → Inductive Loop Detector	□ → Inductive Loop Detector
□ → Controller & Cabinet	□ → Controller & Cabinet
□ → Junction Box	□ → Junction Box
□ → 2-in Underground Conduit	□ → 2-in Underground Conduit
N/A	→ Right of Way
→ Directional Arrow	→ Directional Arrow
● → Construction Zone Drums	● → Construction Zone Drums
■ → Video Detection Zone	■ → Video Detection Zone
■ → Construction Zone	■ → Construction Zone
N/A	— Guardrail
Ⓐ	Ⓐ "YIELD" Sign (R1-2)
Ⓑ	Ⓑ No Right Turn Sign (R3-1)
Ⓒ	Ⓒ No Left Turn Sign (R3-2)

Signal Upgrade - Temp Design 2 (TMP Phase II)



US 158/NC 14 at US 29 Northbound Ramps

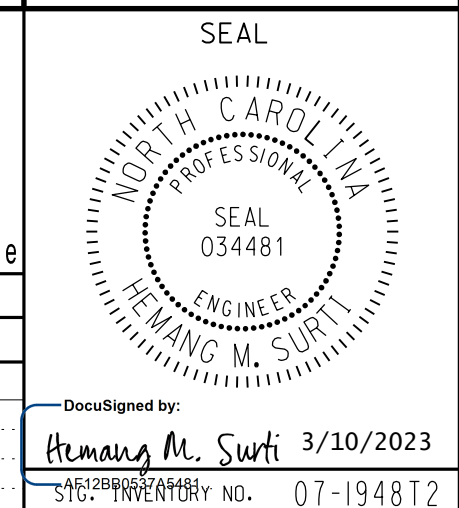
Division 7 Rockingham County Reidsville

PLAN DATE: Jan 2023 REVIEWED BY: H.M. Surti

PREPARED BY: M.D. Tindal REVIEWED BY:

REVISIONS	INIT.	DATE

DOCUMENT NOT CONSIDERED FINAL UNLESS ALL SIGNATURES COMPLETED



DocuSigned by: Hemang M. Surti 3/10/2023

3/10/2023 10:44:43 AM \\aecom-nor-pw-bent1\ey-com\AECOM\2521_NA_2020\0\Documents\60581578-NCDOT_SMI_BR-0043\400-CAD_015\4910-CAD\70-NCDOT_TIP\451\Signal\8\08es1\gm\071948T2...s1g-dsm\2022XXX.dgn