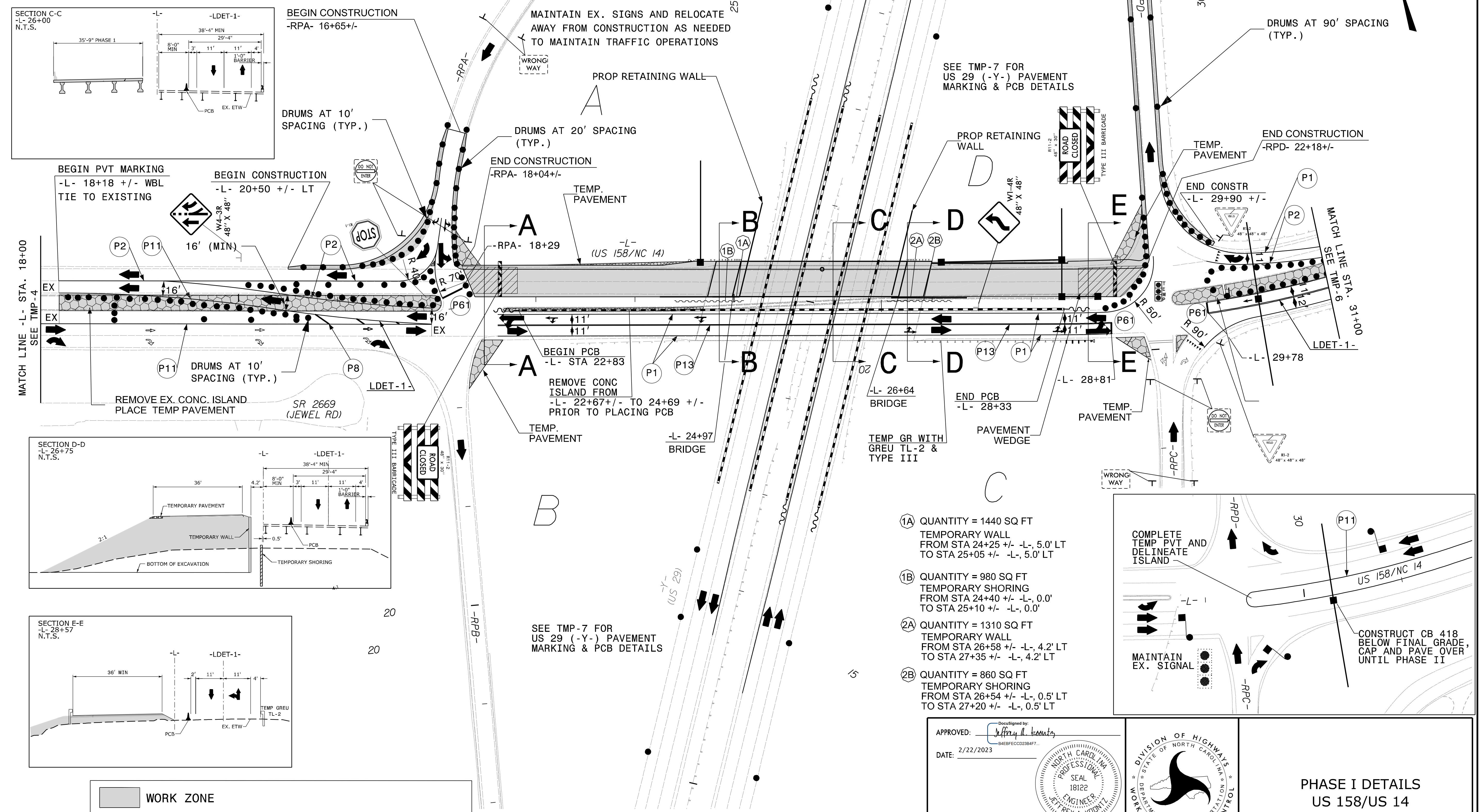
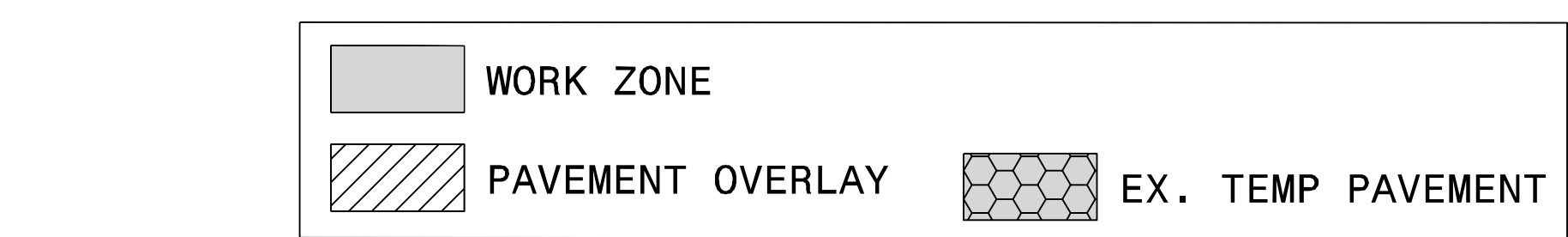
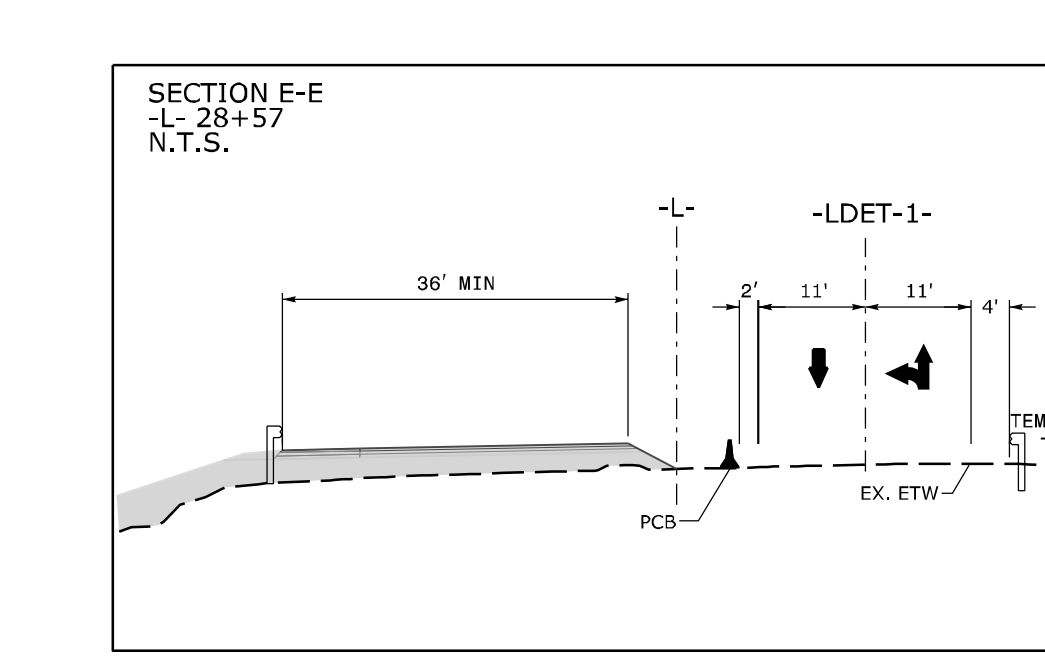
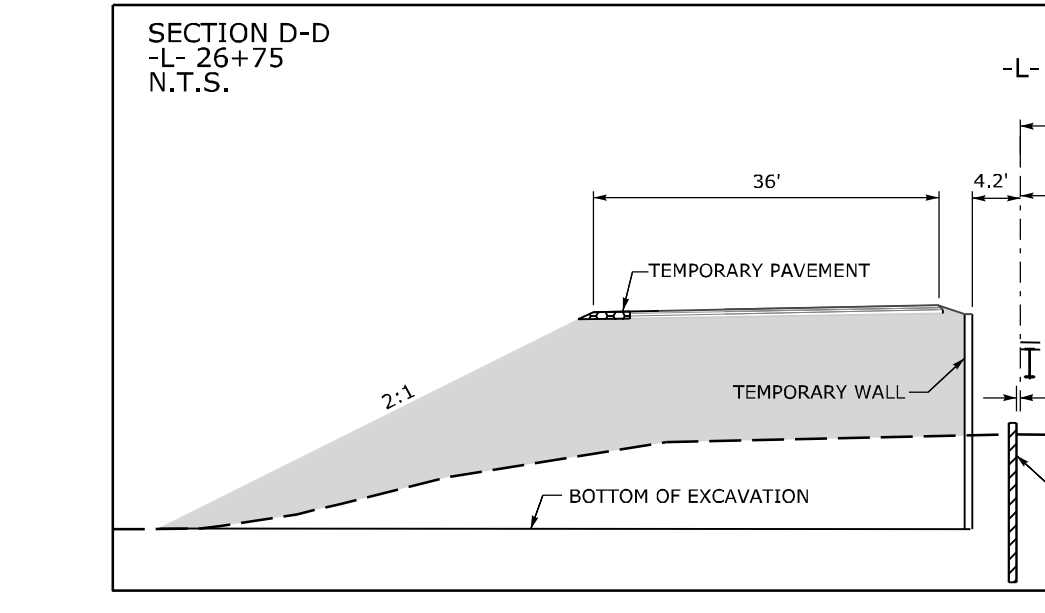
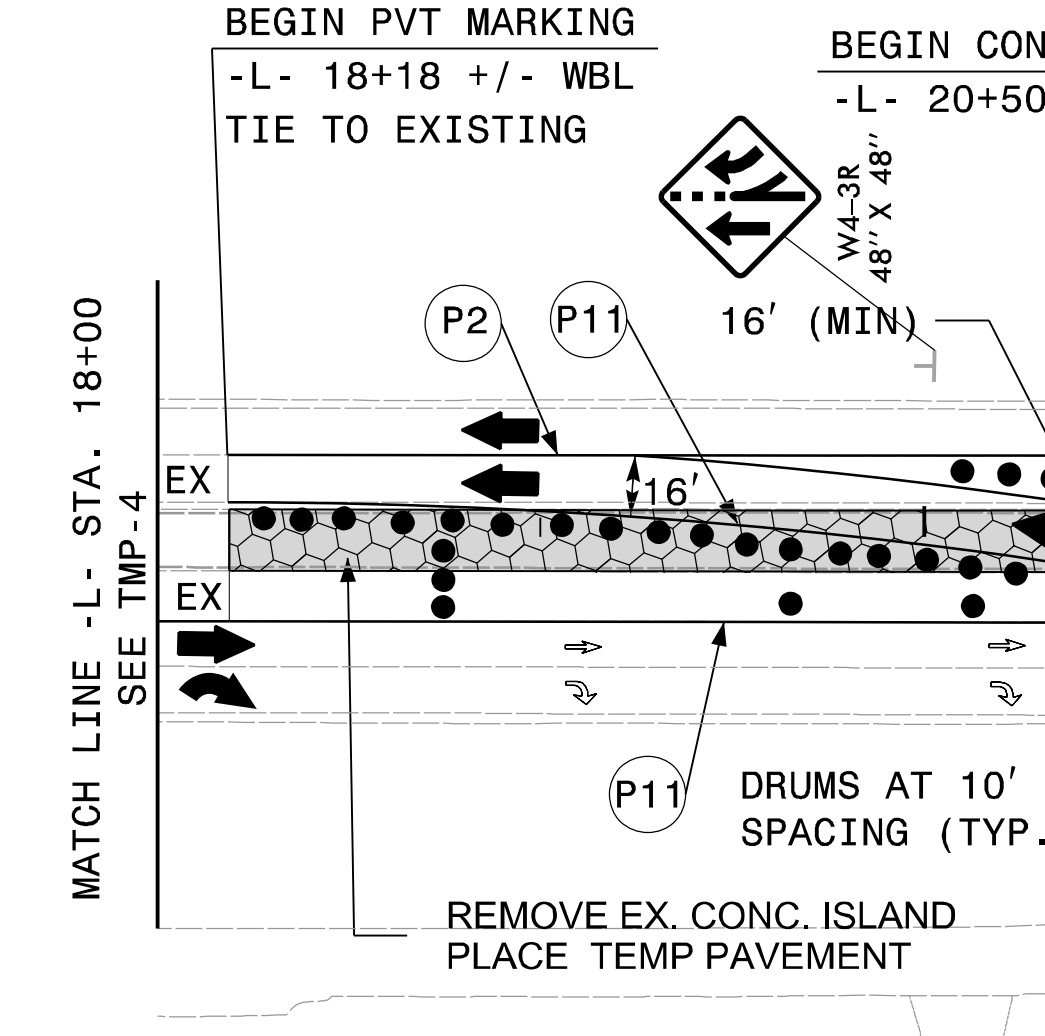
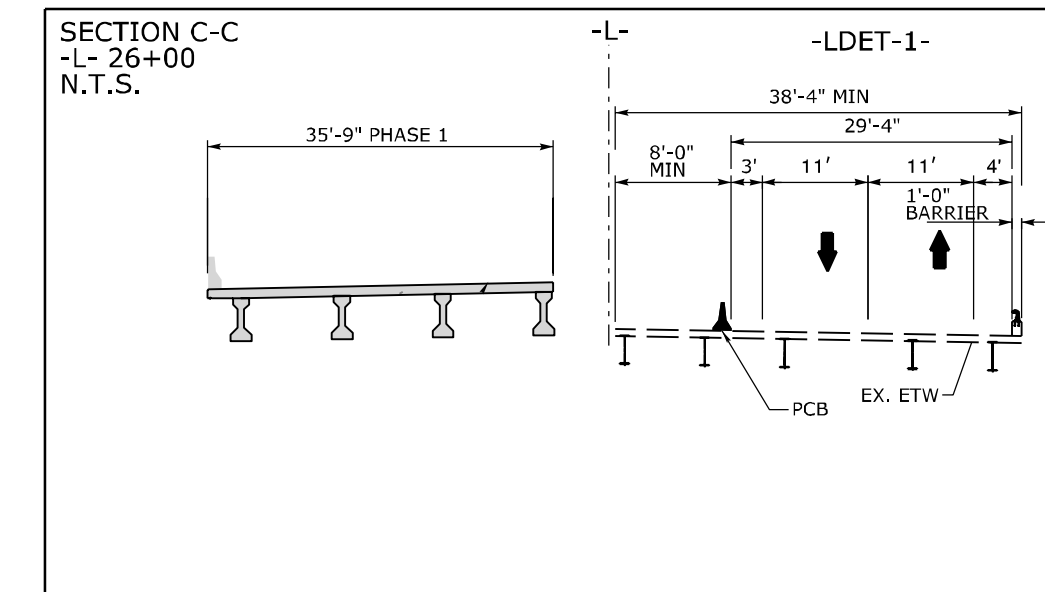
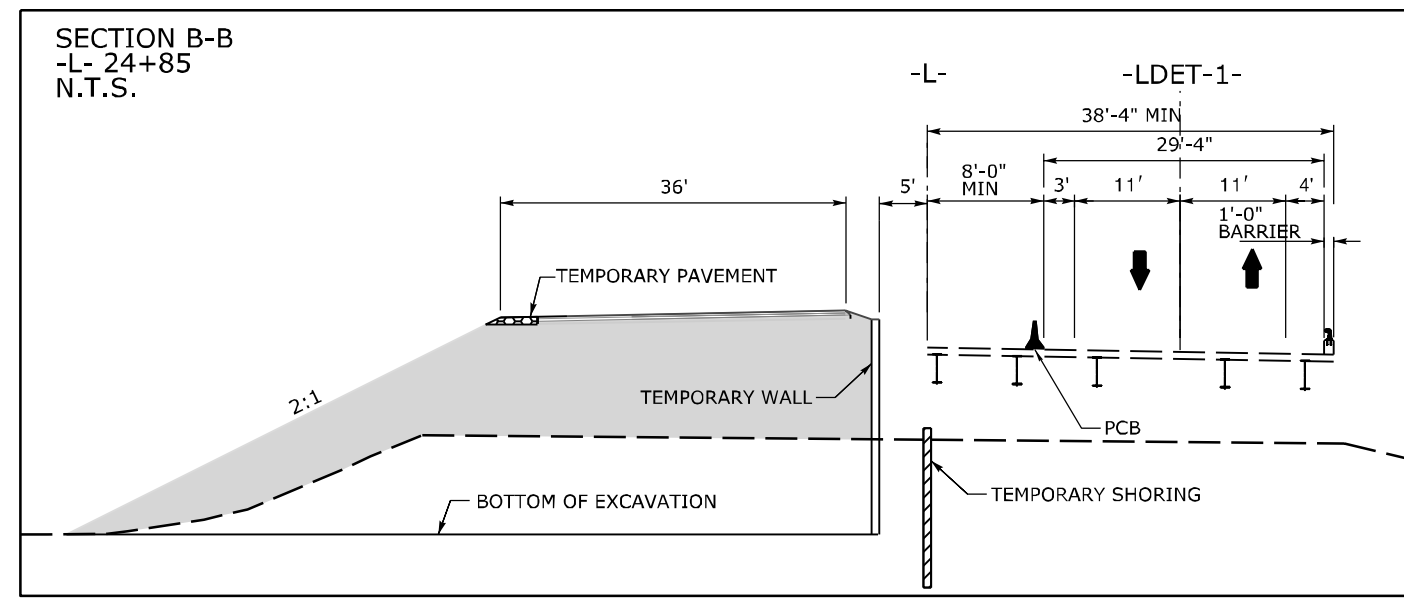
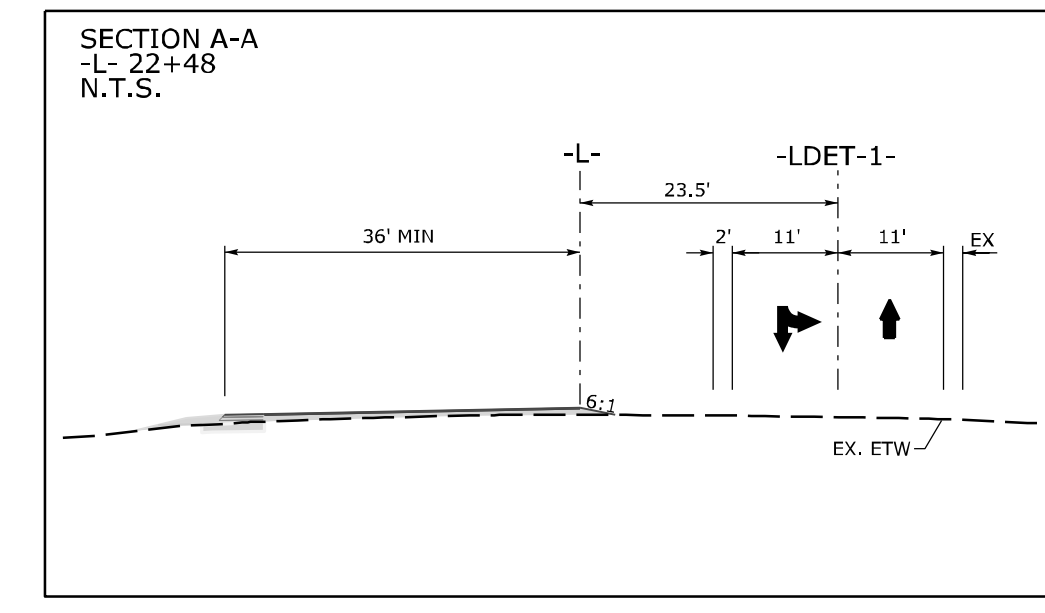
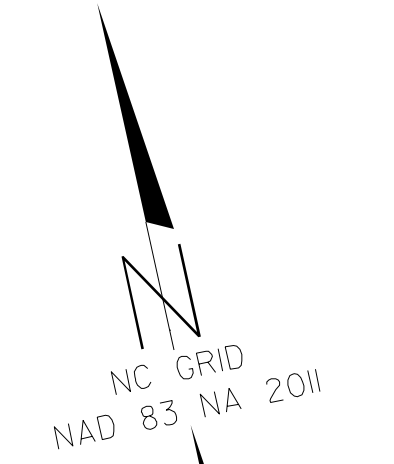


SEE ROADWAY PLAN SHEETS 2B-1, 2B-2 FOR -LDET-1 ALIGNMENT AND 2B-3, 2B-4 FOR TEMP PAVEMENT



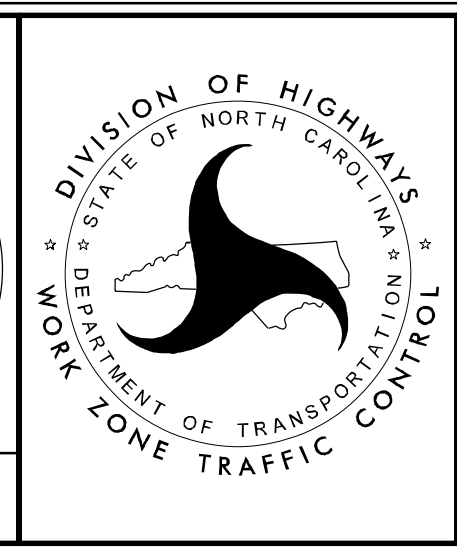
- ①A QUANTITY = 1440 SQ FT
TEMPORARY WALL
FROM STA 24+25 +/- -L-, 5.0' LT
TO STA 25+05 +/- -L-, 5.0' LT
- ①B QUANTITY = 980 SQ FT
TEMPORARY SHORING
FROM STA 24+40 +/- -L-, 0.0'
TO STA 25+10 +/- -L-, 0.0'
- ②A QUANTITY = 1310 SQ FT
TEMPORARY WALL
FROM STA 26+58 +/- -L-, 4.2' LT
TO STA 27+35 +/- -L-, 4.2' LT
- ②B QUANTITY = 860 SQ FT
TEMPORARY SHORING
FROM STA 26+54 +/- -L-, 0.5' LT
TO STA 27+20 +/- -L-, 0.5' LT

APPROVED: *Jeffrey A. Koontz*

DATE: 2/22/2023

DocuSigned by:
Jeffrey A. Koontz
948BFCC02284F7

**DOCUMENT NOT CONSIDERED FINAL
UNLESS ALL SIGNATURES COMPLETED**



**PHASE I DETAILS
US 158/US 14**

2/22/2023 TMP_03_Pnl.sh2.dgn
B50043.TC
jon.ar-chambault