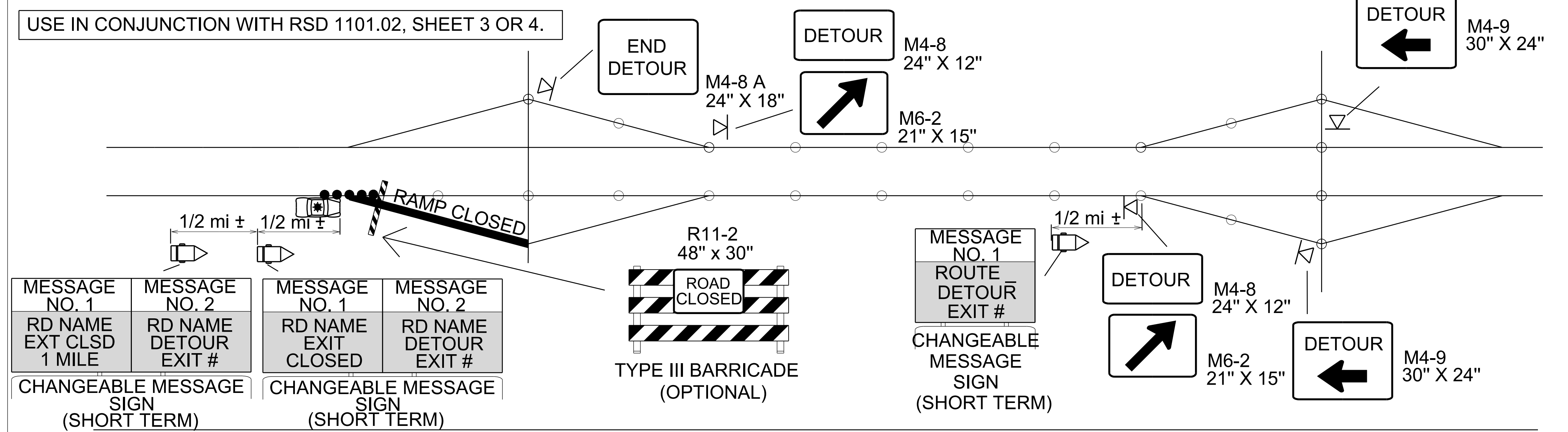
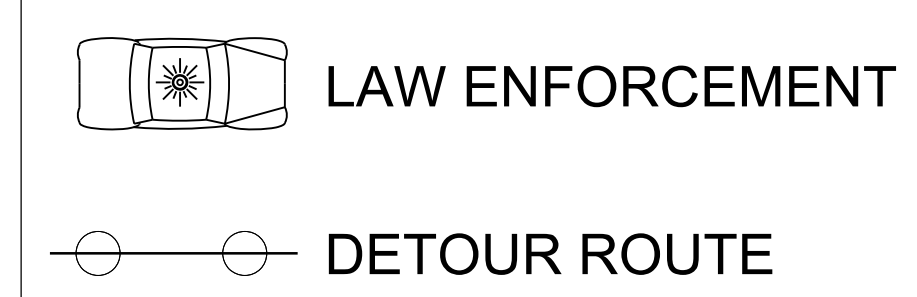
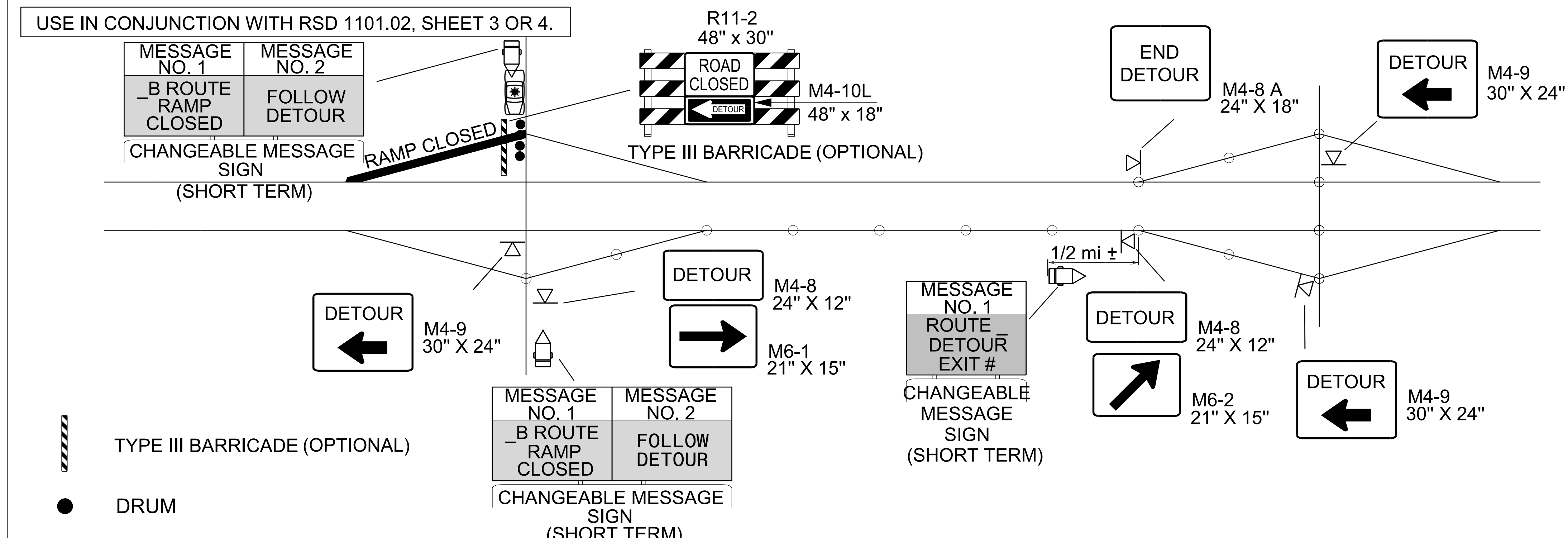


**TYPICAL RAMP DETOURS**

**SHORT TERM CLOSURE AND DETOUR OF OFF-RAMP TO ADJACENT INTERCHANGE**



**SHORT TERM CLOSURE AND DETOUR OF ON-RAMP TO ADJACENT INTERCHANGE**



**GENERAL NOTES**

1. THIS DRAWING IS INTENDED FOR USE DURING SHORT TERM CLOSURES OF INTERSTATE AND FREEWAY RAMPS.
2. RAMP CLOSURES SHALL BE APPROVED BY THE ENGINEER.
3. IF RAMP CLOSURE RESTRICTIONS APPLY, SEE SPECIAL PROVISION, "INTERMEDIATE CONTRACT TIMES AND LIQUIDATED DAMAGES".

2/15/2023 BR0043\_TC\_TMP\_02D\_RampDetour.dgn jon\_ar-chambault

**AECOM**  
 NC Firm License No.: F-0342  
 5438 Wade Park Boulevard  
 Suite 200 Raleigh, NC 27607  
 Phone: 919-461-1100

APPROVED: *Jeffrey A. Koudy*  
 DATE: 2/15/2023  
 SEAL  
 NORTH CAROLINA PROFESSIONAL ENGINEER  
 18122  
 JEFFREY A. KOUDY

DIVISION OF HIGHWAYS  
 NORTH CAROLINA  
 DEPARTMENT OF TRANSPORTATION  
 WORK ZONE TRAFFIC CONTROL

**RAMP & LOOP  
 CLOSURE  
 DETOUR DETAIL**

**DOCUMENT NOT CONSIDERED FINAL  
 UNLESS ALL SIGNATURES COMPLETED**