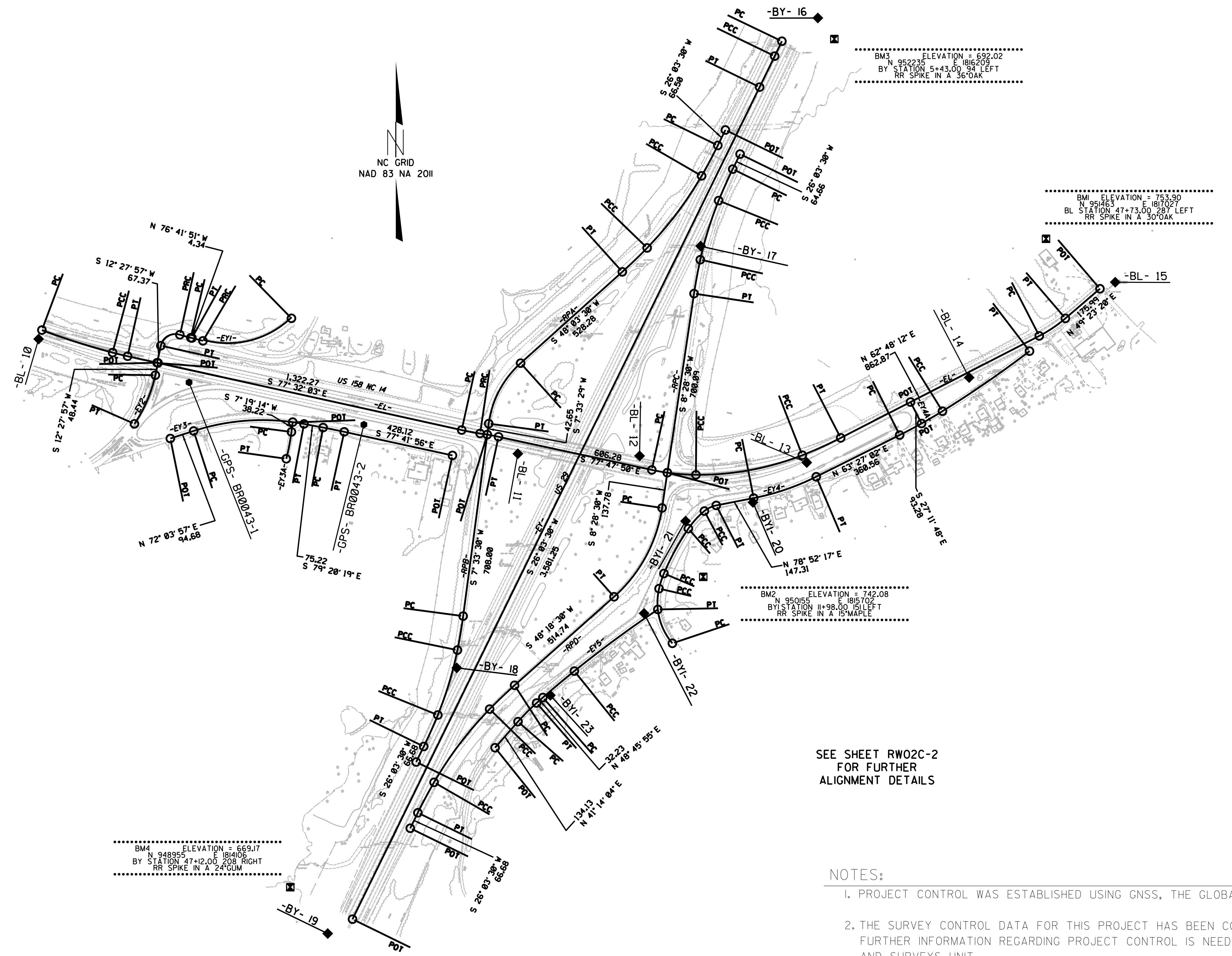


# SURVEY CONTROL SHEET

W/ EXISTING CENTERLINE ALIGNMENTS PRIOR TO CONSTRUCTION



BM3 ELEVATION = 692.02  
 N 952235 E 1816209  
 BY STATION 5+43.00 94' LEFT  
 RR SPIKE IN A 36" OAK

BM ELEVATION = 753.90  
 N 951463 E 181027  
 BL STATION 47+73.00 287' LEFT  
 RR SPIKE IN A 30" OAK

BM2 ELEVATION = 742.08  
 N 950155 E 1815707  
 BY STATION 11+98.00 151' LEFT  
 RR SPIKE IN A 15" MAPLE

BM4 ELEVATION = 689.17  
 N 948955 E 1814106  
 BY STATION 47+12.00 208' RIGHT  
 RR SPIKE IN A 24" GUM

SEE SHEET RW02C-2  
 FOR FURTHER  
 ALIGNMENT DETAILS

**NOTES:**

- PROJECT CONTROL WAS ESTABLISHED USING GNSS, THE GLOBAL NAVIGATION SATELLITE SYSTEM.
- THE SURVEY CONTROL DATA FOR THIS PROJECT HAS BEEN COMPILED FROM VARIOUS SOURCES. IF FURTHER INFORMATION REGARDING PROJECT CONTROL IS NEEDED, PLEASE CONTACT THE LOCATION AND SURVEYS UNIT.

REVISIONS

6/2/09

D:\50\208\_4508\_Survey\BR0043\MICROSTATION\BR0043.LS.RW2C-1.181102.dgn  
 10/24/09 10:42:21 AM  
 10/24/09 10:42:21 AM