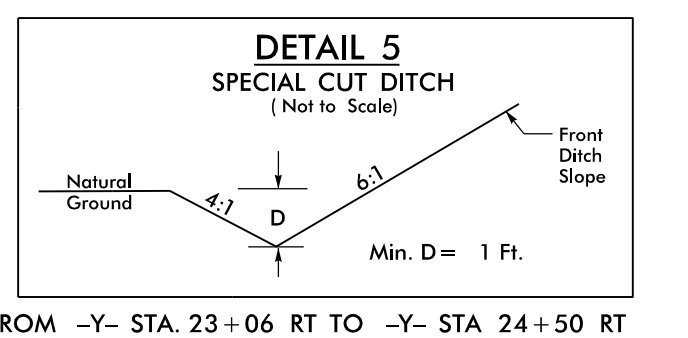
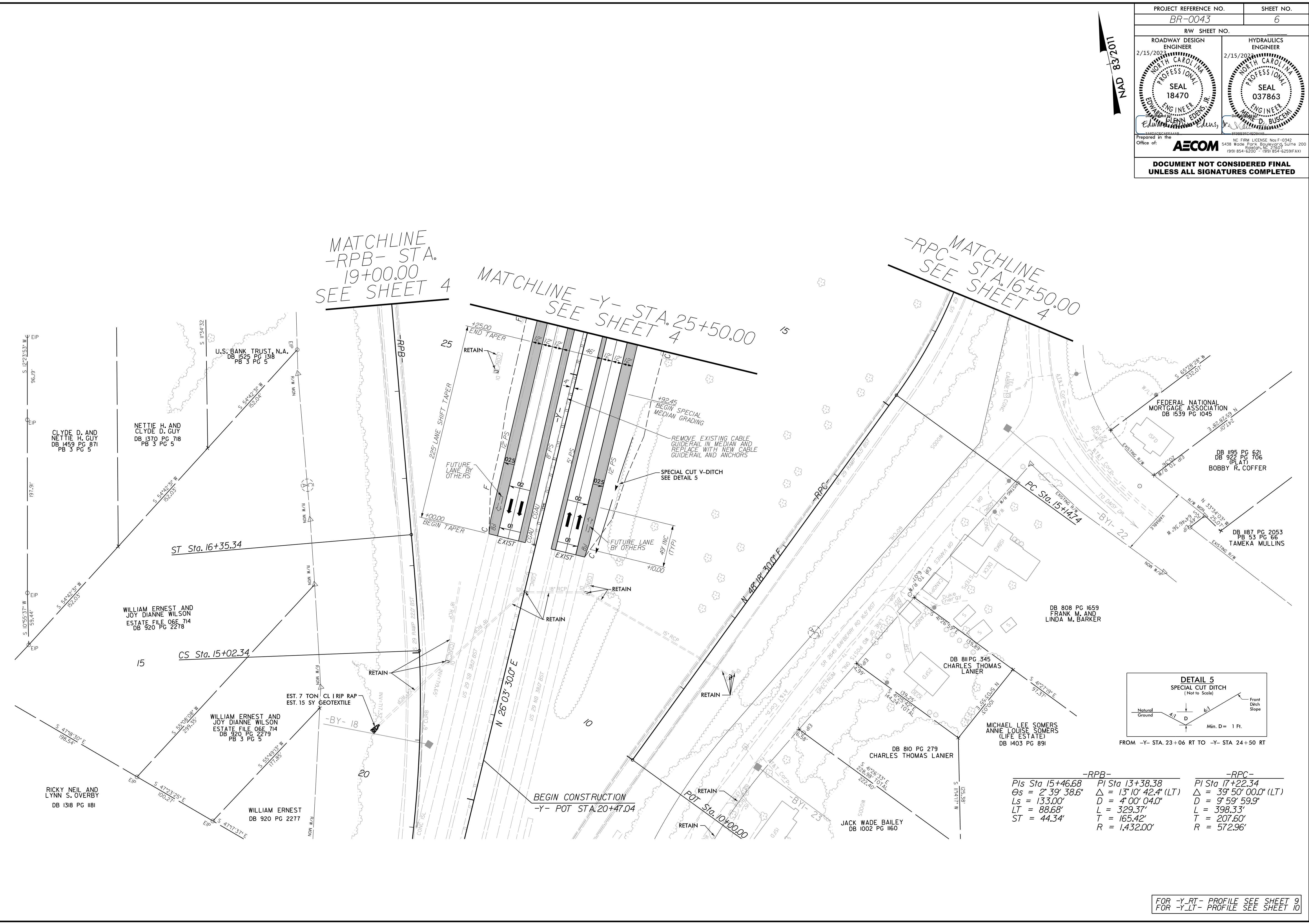


5/14/99

PROJECT REFERENCE NO. <i>BR-0043</i>		SHEET NO. 6	
RW SHEET NO.			
ROADWAY DESIGN ENGINEER 2/15/2022 NORTH CAROLINA PROFESSIONAL SEAL 18470 EDWARD P. BLINN, EDOR, JR.		HYDRAULICS ENGINEER 2/15/2022 NORTH CAROLINA PROFESSIONAL SEAL 037863 WILLIAM D. BUSCEMI	
Prepared in the Office of: AECOM NC FIRM LICENSE No: F-0342 5438 Wade Park Boulevard, Suite 200 Raleigh, NC 27607 (919) 854-6200 • (919) 854-6259(FAX)			
DOCUMENT NOT CONSIDERED FINAL UNLESS ALL SIGNATURES COMPLETED			

116238
NAD 83/2011

REVISIONS



-RPB-	-RPC-	-RPC-
PI Sta 15+46.68	PI Sta 13+38.38	PI Sta 17+22.34
Os = 2° 39' 38.6"	Δ = 13° 10' 42.4" (LT)	Δ = 39° 50' 00.0" (LT)
Ls = 133.00'	D = 4° 00' 04.0"	D = 9° 59' 59.9"
LT = 88.68'	L = 329.37'	L = 398.33'
ST = 44.34'	T = 165.42'	T = 207.60'
	R = 1,432.00'	R = 572.96'

FOR -Y-RT- PROFILE SEE SHEET 9
FOR -Y-LT- PROFILE SEE SHEET 10