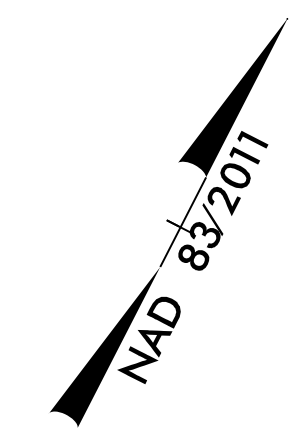


5/14/99

PROJECT REFERENCE NO. <i>BR-0043</i>		SHEET NO. <i>5</i>	
RW SHEET NO.			
ROADWAY DESIGN ENGINEER 2/15/2023 NORTH CAROLINA PROFESSIONAL SEAL 18470 EDWARD J. GLENN, EDES, JR.		HYDRAULICS ENGINEER 2/15/2023 NORTH CAROLINA PROFESSIONAL SEAL 037863 DAVID D. BUSCEMI	
Prepared in the Office of: AECOM NC FIRM LICENSE No: F-0342 5438 Wade Park Boulevard, Suite 200 Raleigh, NC 27607 (919) 854-6200 • (919) 854-6259(FAX)			
DOCUMENT NOT CONSIDERED FINAL UNLESS ALL SIGNATURES COMPLETED			



CLARK M. HOLT, TRUSTEE
JOHN N. HESTER, III
DALEY ELISABETH SCOTT, ET ALS
DB 1291 PG 41
LIFE ESTATE OBE 299
PB 30 PG 38

DALEY ELISABETH SCOTT, ET ALS
LIFE ESTATE OBE 299
DB 1012 PG 196
PB 30 PG 38

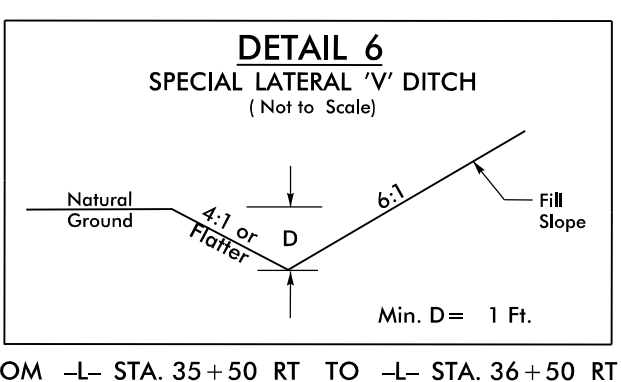
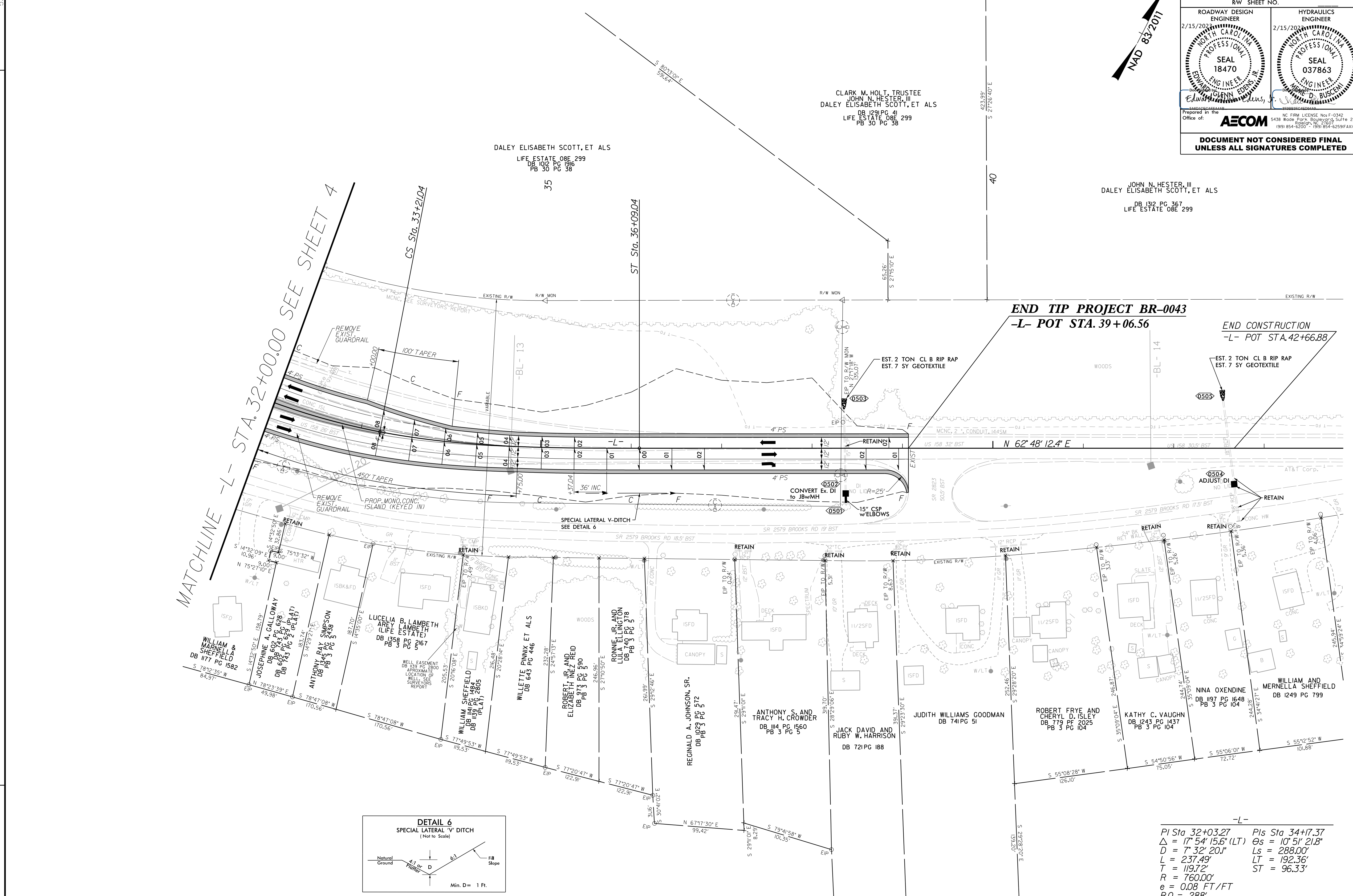
JOHN N. HESTER, III
DALEY ELISABETH SCOTT, ET ALS
DB 1312 PG 367
LIFE ESTATE OBE 299

MATCHLINE -L- STA. 32+00.00 SEE SHEET 4

END TIP PROJECT BR-0043
-L- POT STA. 39+06.56

END CONSTRUCTION
-L- POT STA. 42+66.88

REVISIONS



-L-
 PI Sta 32+03.27 Pls Sta 34+17.37
 $\Delta = 17' 54'' 15.6''$ (LT) $\Theta_s = 10' 51'' 21.8''$
 $D = 7' 32'' 20.1''$ $L_s = 288.00'$
 $L = 237.49'$ $LT = 192.36'$
 $T = 119.72'$ $ST = 96.33'$
 $R = 760.00'$
 $e = 0.08$ FT/FT
 $R.O. = 288'$

FOR -L- PROFILE SEE SHEET 8