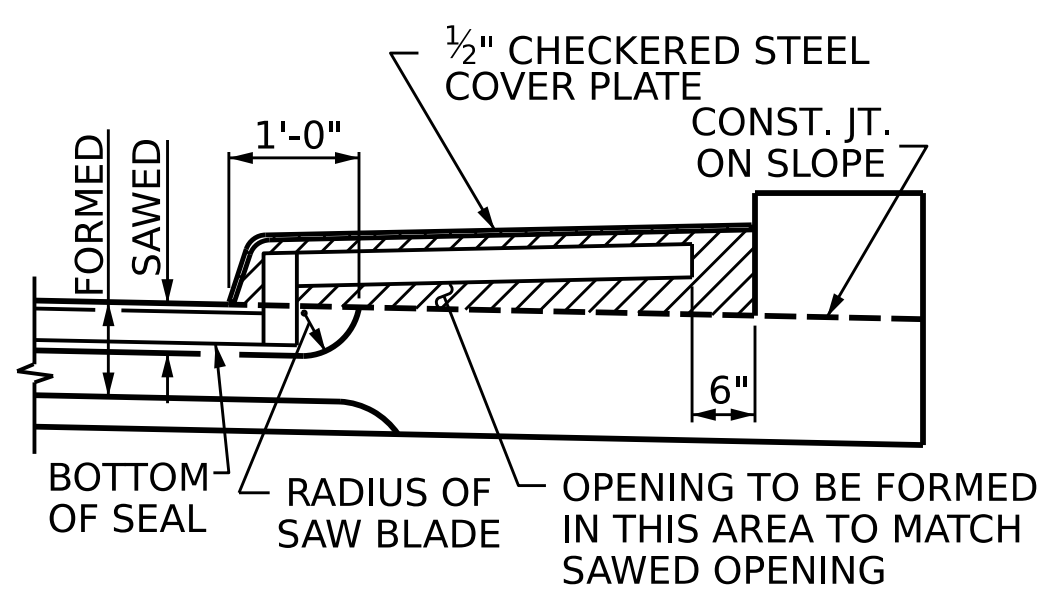
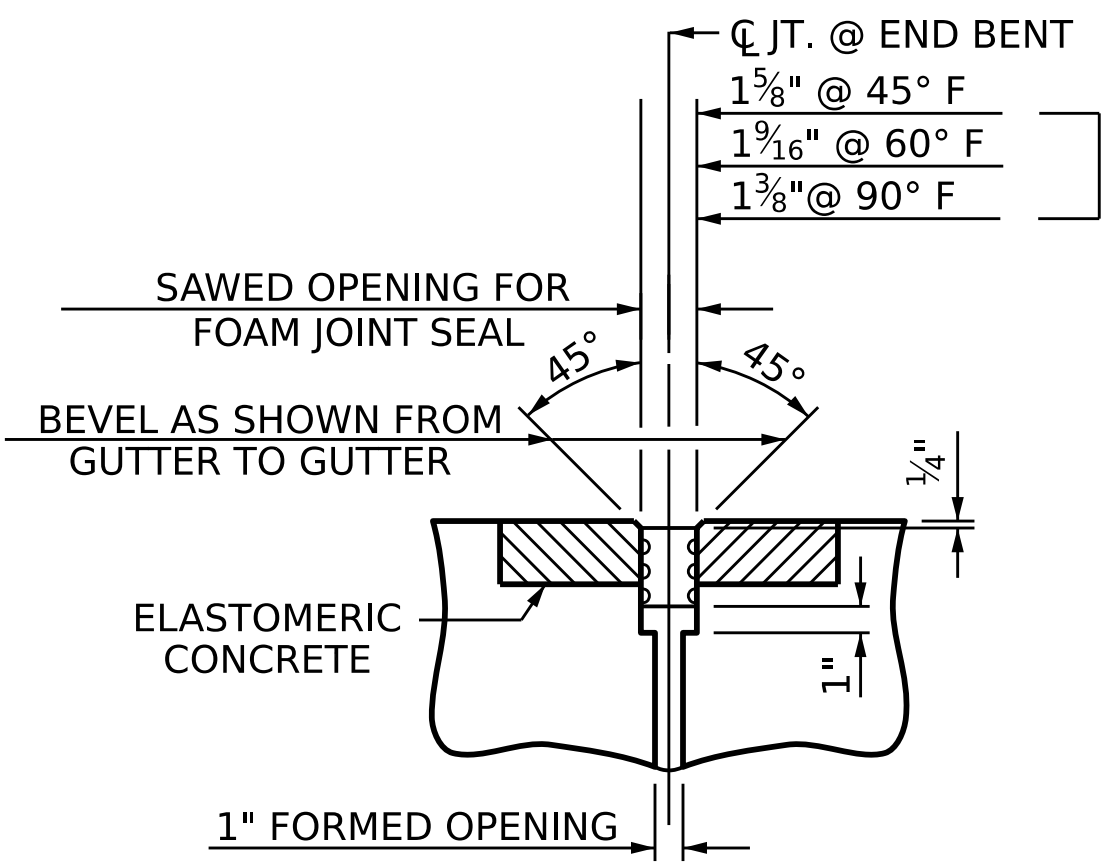


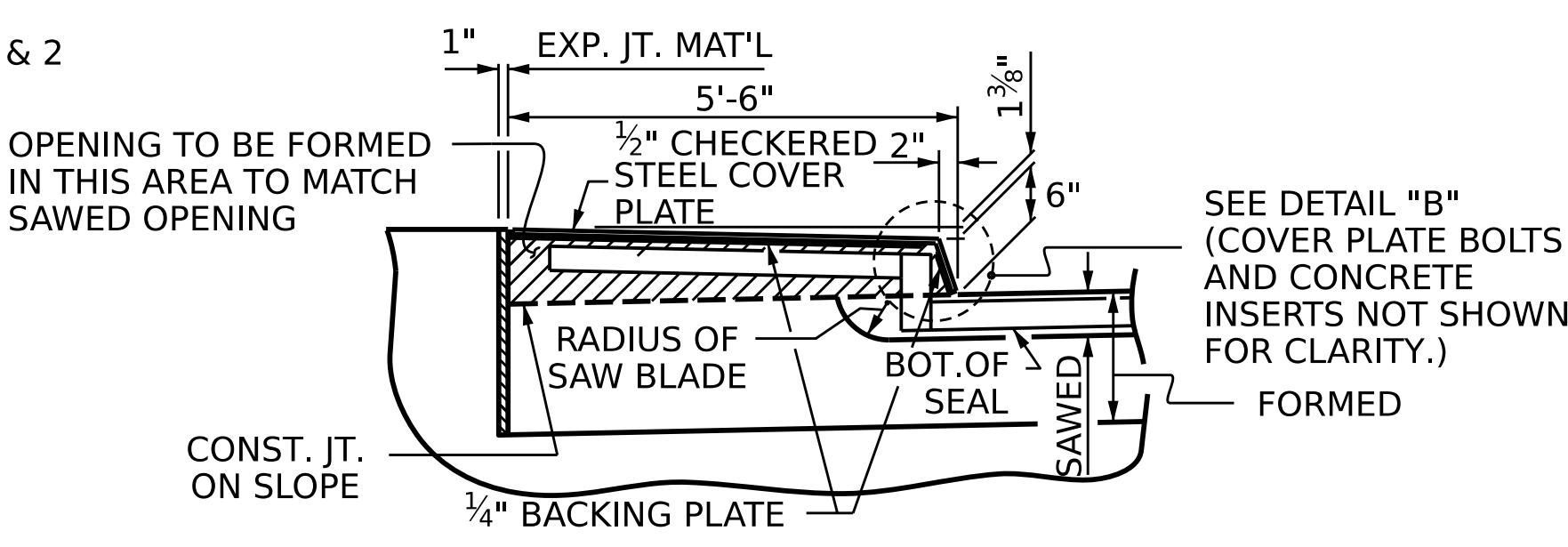
**SECTION C-C**  
FOAM JOINT SEAL  
(PRE-SAWED ELASTOMERIC  
CONCRETE DIMENSIONS)



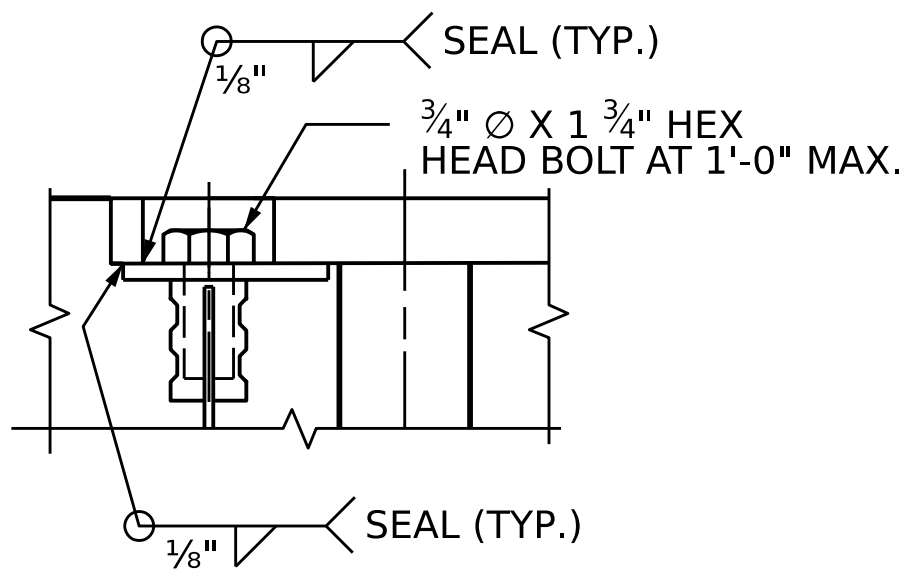
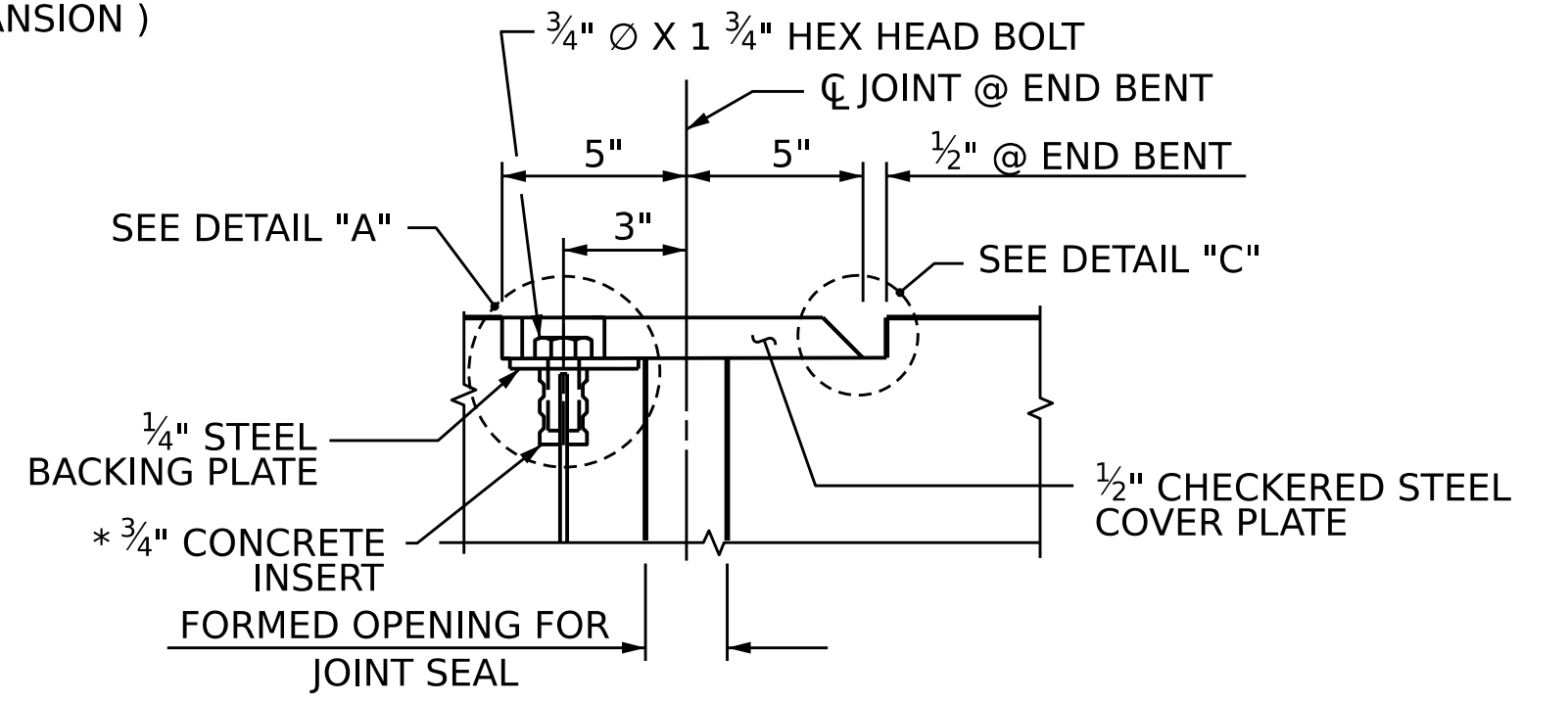
**SECTION H-H**  
(ON BRIDGE DECK)



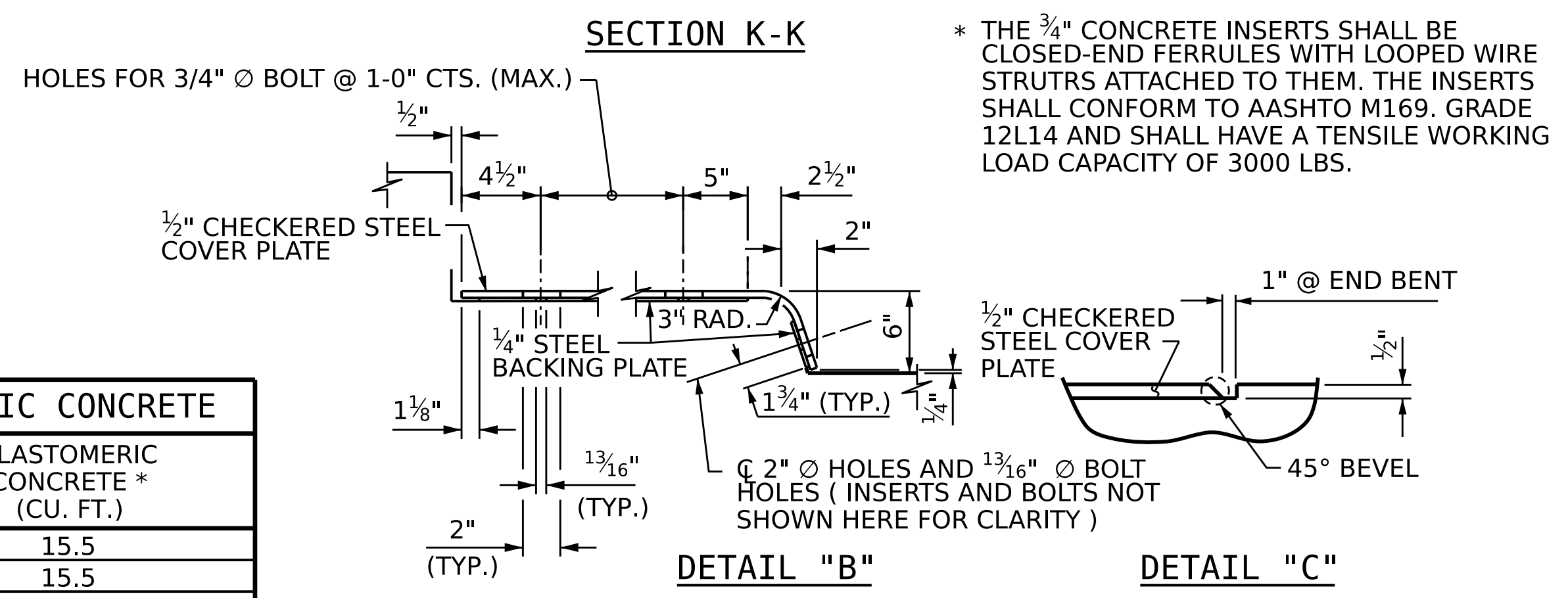
**SECTION C-C**  
FOAM JOINT SEAL  
(EXPANSION)



**SECTION I-I**  
(ON APPROACH SLAB)



**DETAIL "A"**

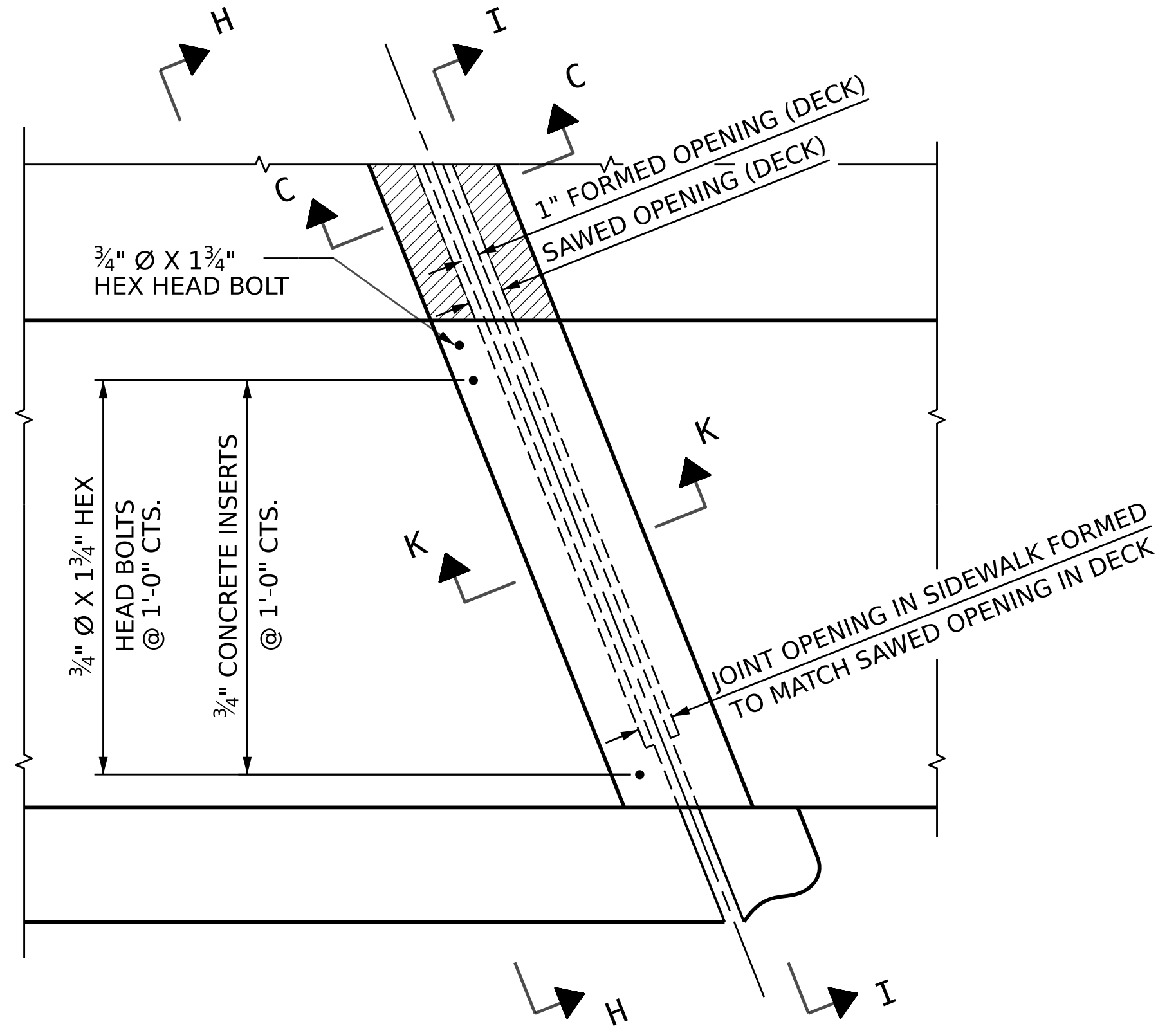


**SECTION K-K**

**DETAIL "B"**

**DETAIL "C"**

**JOINT SEAL DETAILS @ END BENT**



**PLAN**

ELASTOMERIC CONCRETE	
END BENT NO.	ELASTOMERIC CONCRETE * (CU. FT.)
1	15.5
2	15.5
TOTAL	31.0

\* BASED ON THE MINIMUM BLOCKOUT SHOWN.

ASSEMBLED BY : B.T. LEROY	DATE : 11/2022
CHECKED BY : G. COLS	DATE : 11/2022
DRAWN BY : FCJ 11/88	REV. 6/13 MAA/GM
CHECKED BY : ARB 11/88	REV. 12/17 MAA/THC
	REV. 5/18 MAA/THC

THE STEEL PLATES SHALL CONFORM TO AASHTO M270 GRADE 36 OR APPROVED EQUAL. AFTER FABRICATION, THE PLATES SHALL BE COMMERCIALY BLAST CLEANED AND EITHER COATED WITH A MINIMUM THICKNESS OF 4 MILS (DRY) OF ZINC-RICH PAINT, GALVANIZED OR METALLIZED TO A MINIMUM THICKNESS OF 6 MILS IN ACCORDANCE WITH THE STANDARD SPECIFICATIONS. FOR THERMAL SPRAYED COATINGS (METALLIZATION), SEE SPECIAL PROVISIONS.

THE 3/4" DIAMETER HEX HEAD BOLTS SHALL CONFORM TO ASTM F593 ALLOY 304 STAINLESS STEEL.

NO SEPARATE PAYMENT WILL BE MADE FOR FURNISHING AND INSTALLING THE COVER PLATE. THE ENTIRE COST OF THIS WORK SHALL BE INCLUDED IN THE LUMP SUM PRICE FOR "FOAM JOINT SEALS".

PROJECT NO. BR-0041  
ROCKINGHAM COUNTY  
STATION: POT 34+73.00 -L-

SHEET 3 OF 3

REVISIONS						SHEET NO.
NO.	BY:	DATE:	NO.	BY:	DATE:	S1-48
1			3			TOTAL SHEETS
2			4			48

DOCUMENT NOT CONSIDERED FINAL UNLESS ALL SIGNATURES COMPLETED