

NOTES

THE SIDEWALK SHALL NOT BE CAST UNTIL APPROACH SLAB CONCRETE HAS BEEN CAST AND REACHED A MINIMUM COMPRESSIVE STRENGTH OF 3000 PSI.

ALL REINFORCING STEEL IN THE SIDEWALKS SHALL BE EPOXY COATED.

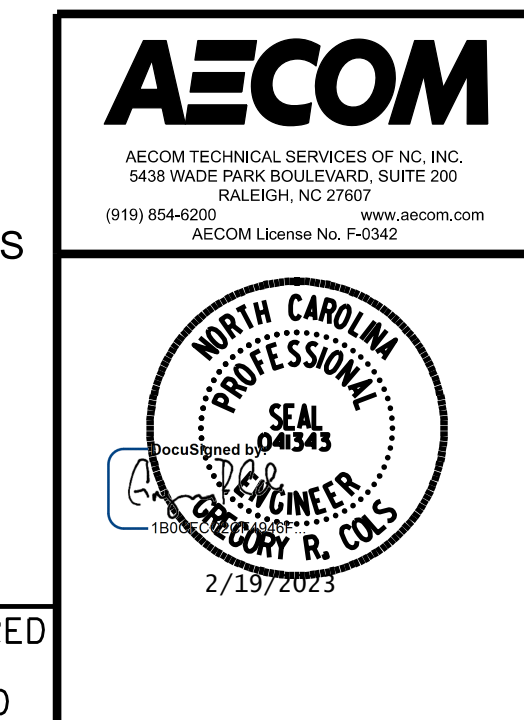
**"U" BARS MAY BE PUSHED INTO GREEN CONCRETE AFTER SPAN HAS BEEN SCREEDED OFF.

FOR MEDIAN (STAGE III), SEE "CONCRETE MEDIAN DETAILS" SHEET. QUANTITIES FOR MEDIAN ON APPROACH SLAB ARE INCLUDED WITH MEDIAN DETAILS. THE ENTIRE COST OF MEDIAN ON APPROACH SLAB SHALL BE INCLUDED IN THE LUMP-SUM BID PRICE FOR APPROACH SLABS, NO SEPARATE PAYMENT SHALL BE MADE.

THE ENTIRE COST FOR SIDEWALKS ON APPROACH SLAB SHALL BE INCLUDED IN THE LUMP SUM BID PRICE FOR APPROACH SLABS, NO SEPARATE PAYMENT SHALL BE MADE.

DRAWN BY :	M.L. CATER	DATE :	10/2022
CHECKED BY :	G.R. COLS	DATE :	10/2022
DESIGN ENGINEER OF RECORD:	G. COLS	DATE :	12/2022

PROJECT NO. BR-0041
ROCKINGHAM COUNTY
 STATION: POT 34+73.00 -L-
 SHEET 1 OF 2



STATE OF NORTH CAROLINA DEPARTMENT OF TRANSPORTATION RALEIGH					
BRIDGE APPROACH SLAB					
REVISIONS					
NO.	BY:	DATE:	NO.	BY:	DATE:
1			3		
2			4		
					SHEET NO. S-46
					TOTAL 48