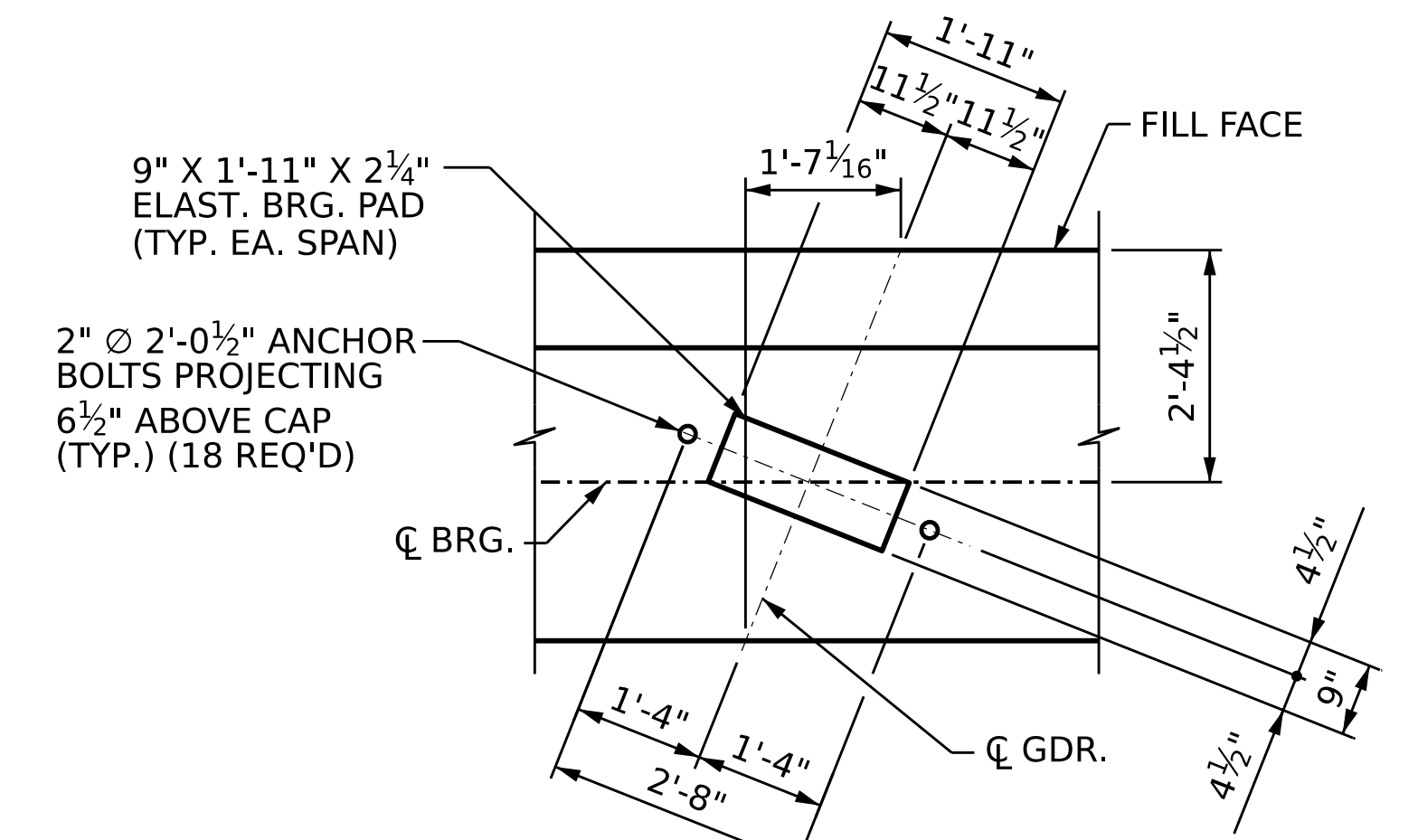
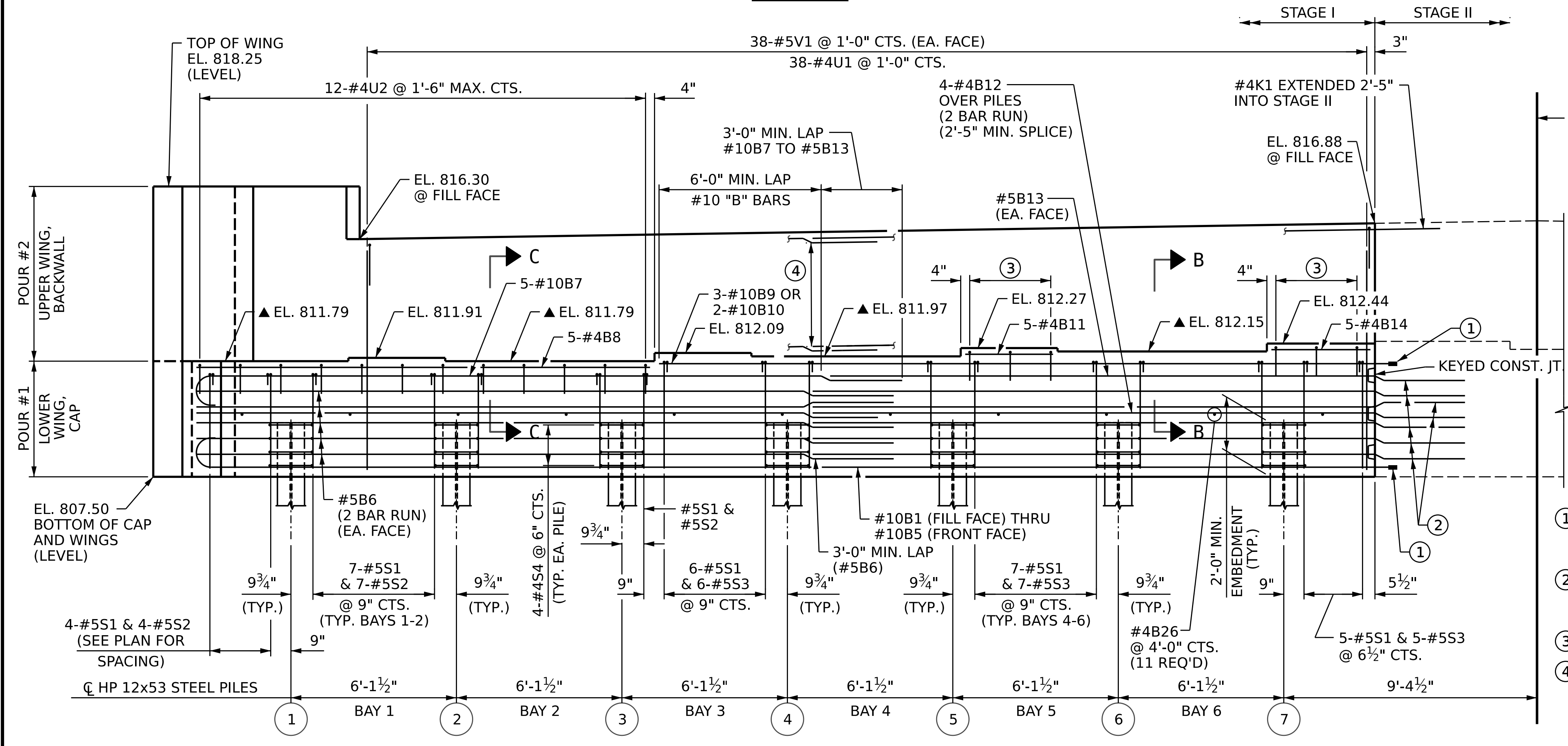


* A PRECAST PANEL THICKNESS OF 1'-0" WAS ASSUMED FOR ESTABLISHING WING LENGTH. CONTRACTOR SHALL ADJUST WING LENGTH AS NECESSARY.

NOTES:

- MECHANICAL COUPLERS SHALL BE USED TO JOIN THE #10 BARS IN STAGE I WITH THE #10 "B" BARS IN STAGE II. THE LOCATION OF THE COUPLERS SHALL BE STAGGERED ON ALTERNATING BARS BY 2'-0" AND THE STAGE I BARS SHALL BE CUT ACCORDINGLY TO ALLOW A MINIMUM OF 1'-0" AND A MAXIMUM OF 3'-0" EXTENSION INTO STAGE II CONSTRUCTION.
- FOR MECHANICAL COUPLERS, SEE MECHANICAL BUTT SPLICES FOR REINFORCING STEEL IN STANDARD SPECIFICATIONS.
- THE CONTRACTOR'S ATTENTION IS CALLED TO THE FACT THAT THE LENGTHS OF THE #10 "B" BARS AT THE STAGED CONSTRUCTION JOINT MAY NEED TO BE ADJUSTED DUE TO THE TYPE OF MECHANICAL BUTT SPLICE CHOSEN BY THE CONTRACTOR. NO ADDITIONAL PAYMENT WILL BE MADE FOR ANY ADJUSTMENTS.
- STIRRUPS AND "U" BARS IN CAP MAY BE SHIFTED AS NECESSARY TO CLEAR ANCHORS.
- #5 "V" BARS IN BACKWALL SHALL BE PLACED 2" CLEAR FROM TOP OF BACKWALL.
- BACKWALL SHALL BE PLACED BEFORE APPLYING THE EPOXY PROTECTIVE COATING.
- THE TOP SURFACE OF THE END BENT CAP EXCEPT THE BRIDGE SEAT BUILDUPS SHALL BE SLOPED TRANSVERSELY FROM THE FILL FACE TO THE FRONT FACE AT THE RATE OF 2%.
- THE TOP SURFACE AREAS OF THE END BENT CAPS SHALL BE CURED IN ACCORDANCE WITH THE STANDARD, EXCEPT THE MEMBRANE CURING COMPOUND METHOD SHALL NOT BE USED.
- FOR WING DETAILS, SEE SHEET 3 OF 5.
- FOR DETAIL "B", PILE SPLICE DETAILS, AND TEMPORARY DRAINAGE DETAILS, SEE SHEET 4 OF 5.
- FOR CONSTRUCTION JOINT DETAILS, SEE "KEYED CONSTRUCTION JOINT DETAIL" ON SHEET 4 OF 5.
- FOR SECTIONS B-B AND C-C, SEE SHEET 5 OF 5.



- ① SEE DETAIL "B" FOR REINF. DETAILS AT CONST. JT.
- ② EXTEND #5B6, #5B13, #4B12 3'-2" MIN. INTO STAGE II
- ③ 3-#4U2 @ 1'-6" CTS.
- ④ 5-#4K1 @ 11" CTS. (2 BAR RUN) (2'-5" MIN. SPLICE) (EA. FACE)

PROJECT NO. BR-0041
ROCKINGHAM COUNTY
STATION: POT 34+73.00 -L-
SHEET 1 OF 5

AECOM
AECOM TECHNICAL SERVICES OF NC, INC.
5438 WADE PARK BOULEVARD, SUITE 200
RALEIGH, NC 27607
(919) 854-6200
www.aecom.com
AECOM License No. F0242

PROFESSIONAL SEAL
GREGORY R. COLS
REGISTERED PROFESSIONAL ENGINEER
NO. 04343
EXPIRES 12/31/2023
2/19/2023

STATE OF NORTH CAROLINA
DEPARTMENT OF TRANSPORTATION
RALEIGH

**SUBSTRUCTURE
END BENT 2
STAGE I**

REVISIONS						SHEET NO.
NO.	BY:	DATE:	NO.	BY:	DATE:	S-40
1			3			TOTAL SHEETS 48
2			4			

DRAWN BY: D.R. DRUM DATE: 09/2022
CHECKED BY: S. NATARAJAN DATE: 10/2022
DESIGN ENGINEER OF RECORD: G. COLS DATE: 12/2022

▲ FOR LOCATION OF ELEVATIONS BETWEEN BRIDGE SEAT BUILDUPS, SEE SECTION A-A ON SHEET 5.

DOCUMENT NOT CONSIDERED FINAL UNLESS ALL SIGNATURES COMPLETED