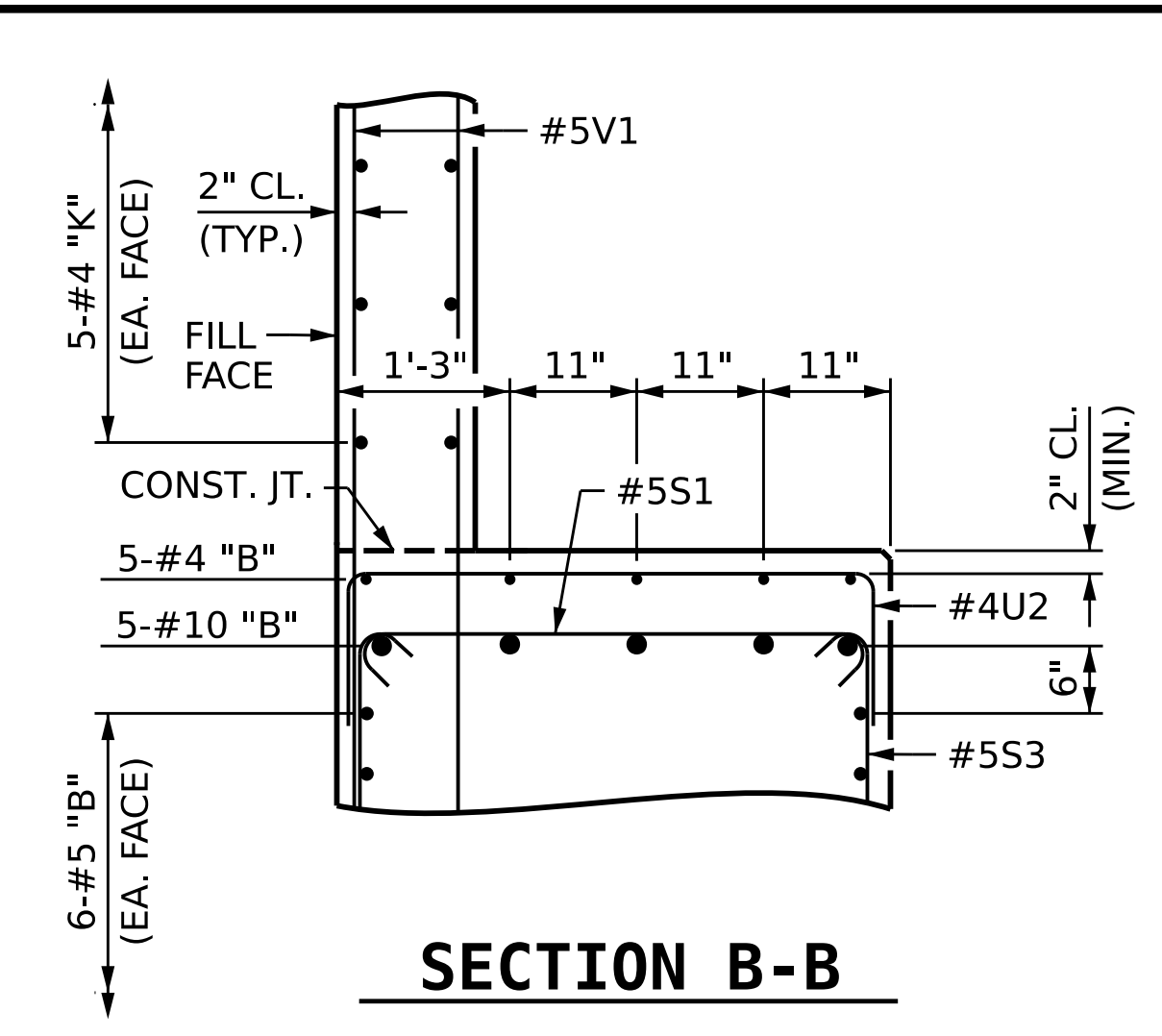
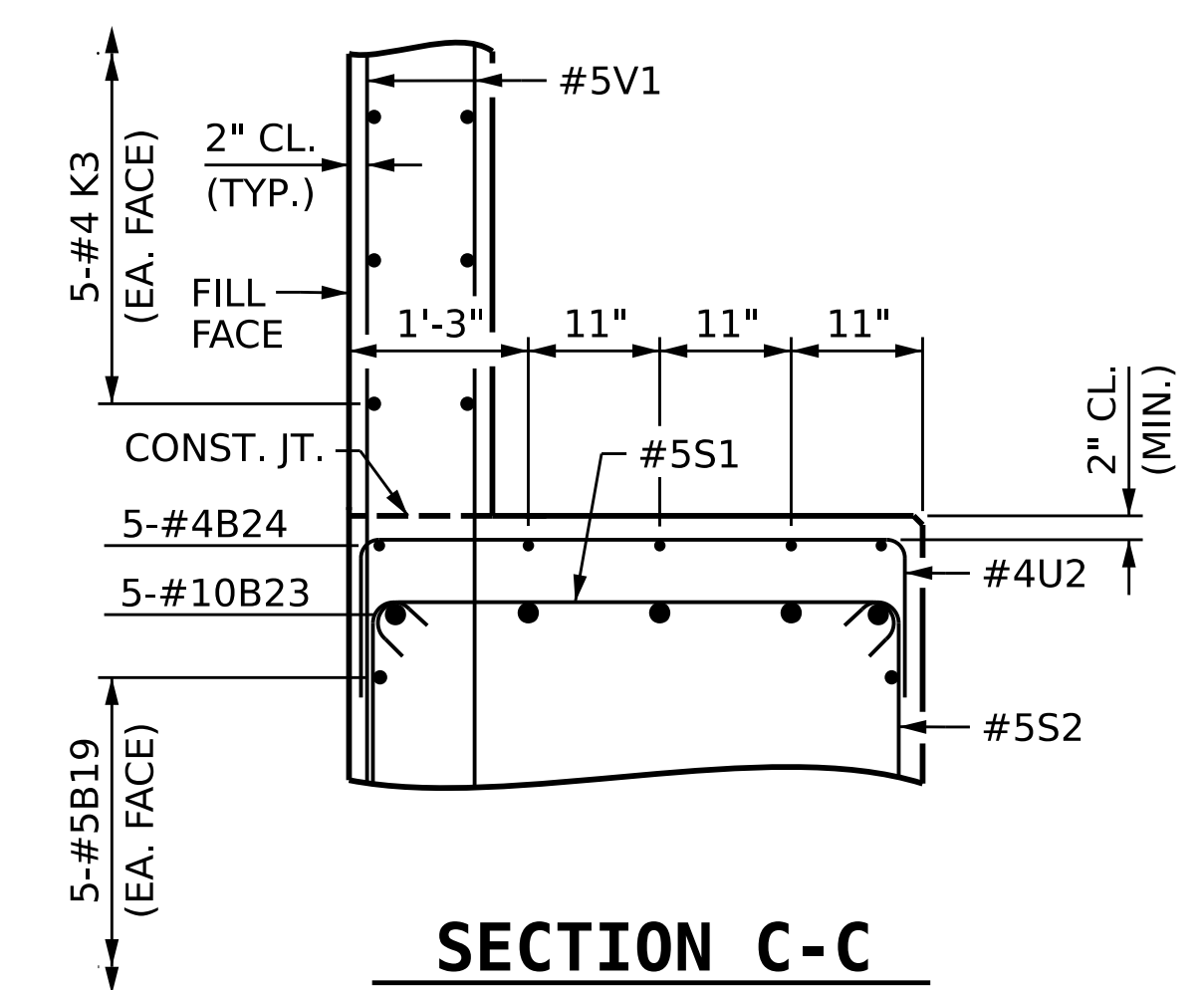


**SECTION A-A**



**SECTION B-B**



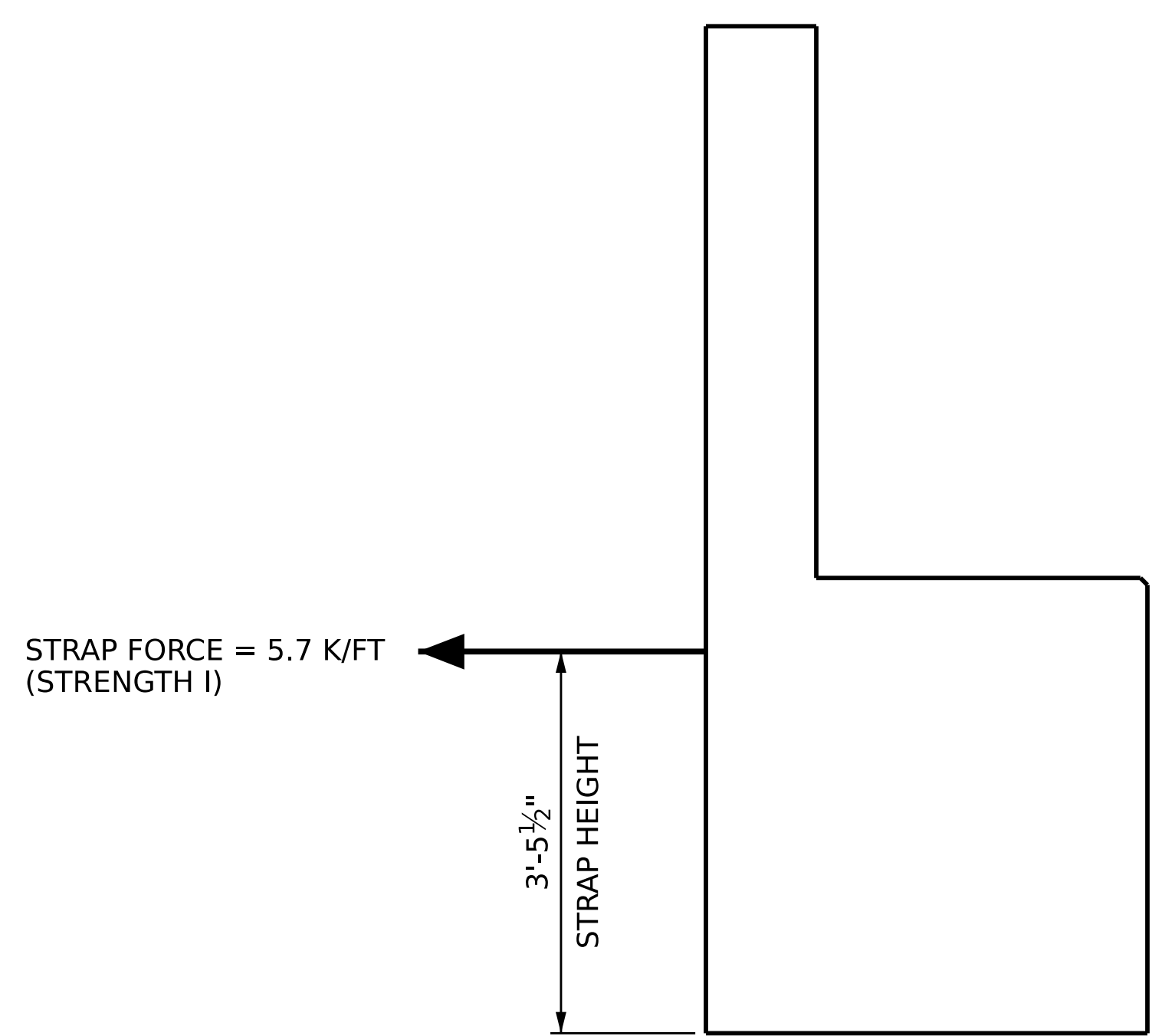
**SECTION C-C**

**BAR TYPES**

BAR	DIM. "X"
B1	44'-9"
B2	46'-6"
B3	44'-2"
B4	45'-7"
B5	43'-4"
B7	37'-9"
B14	51'-4"
B15	49'-7"
B16	51'-11"
B17	50'-5"
B18	52'-8"
B23	25'-7"

ALL BAR DIMENSIONS ARE OUT TO OUT.

BILL OF MATERIAL											
END BENT 1											
STAGE I						STAGE II					
BAR	NO.	SIZE	TYPE	LENGTH	WEIGHT	BAR	NO.	SIZE	TYPE	LENGTH	WEIGHT
B1	1	10	1	46'-2"	199	B14	1	10	1	52'-9"	227
B2	1	10	1	47'-11"	206	B15	1	10	1	51'-0"	219
B3	1	10	1	45'-7"	196	B16	1	10	1	53'-4"	229
B4	1	10	1	47'-0"	202	B17	1	10	1	51'-10"	223
B5	1	10	1	44'-9"	193	B18	1	10	1	54'-1"	233
B6	20	5	STR	25'-1"	523	B19	20	5	STR	28'-5"	593
B7	5	10	1	39'-2"	843	B20	2	5	STR	31'-3"	65
B8	5	4	STR	11'-0"	37	B21	3	10	STR	37'-3"	481
B9	3	10	STR	16'-0"	207	B22	5	4	STR	15'-7"	52
B10	2	10	STR	18'-0"	155	B23	5	10	1	27'-0"	581
B11	5	4	STR	3'-6"	12	B24	5	4	STR	16'-0"	53
B12	8	4	STR	24'-8"	132	B25	13	4	STR	3'-8"	32
B13	2	5	STR	12'-2"	25	B26	2	10	STR	35'-3"	303
B25	11	4	STR	3'-8"	27	B27	8	4	STR	28'-1"	150
						B28	5	4	STR	3'-3"	11
H1	24	4	2	8'-5"	135	H2	24	4	3	8'-8"	139
K1	20	4	STR	24'-4"	325	K2	4	4	STR	4'-2"	11
K2	4	4	STR	4'-2"	11	K3	20	4	STR	28'-1"	375
S1	51	5	4	4'-7"	244	S1	64	5	4	4'-7"	306
S2	32	5	5	11'-9"	392	S2	19	5	5	11'-9"	233
S3	19	5	5	12'-9"	253	S3	45	5	5	12'-9"	598
S4	28	4	6	6'-6"	122	S4	32	4	6	6'-6"	139
U1	39	4	7	4'-8"	122	U1	48	4	7	4'-8"	150
U2	11	4	7	6'-2"	45	U2	26	4	7	6'-2"	107
V1	78	5	STR	8'-1"	658	V1	96	5	STR	8'-1"	809
V2	26	5	STR	10'-1"	273	V3	26	5	STR	10'-5"	282
REINFORCING STEEL					5,537 LBS.	REINFORCING STEEL					6,601 LBS.
CLASS A CONCRETE						CLASS A CONCRETE					
POUR #1 (CAP & LOWER WINGWALL)						28.2 C.Y.					
POUR #2 (BACKWALL & UPPER WINGWALL)						9.4 C.Y.					
TOTAL = 37.6 C.Y.						TOTAL = 47.9 C.Y.					



**STRAP FORCE**

SEE WALL PLANS AND SPECIAL PROVISIONS

PROJECT NO. BR-0041  
ROCKINGHAM COUNTY  
 STATION: POT 34+73.00 -L-  
 SHEET 5 OF 5

**AECOM**  
AECOM TECHNICAL SERVICES OF NC, INC.  
 5430 WADE PARK BOULEVARD, SUITE 200  
 RALEIGH, NC 27607  
 (919) 854-6200 www.aecom.com  
 AECOM License No. F0242

**PROFESSIONAL SEAL**  
 04343  
 ENGINEER  
 CHERYL R. COLS  
 2/19/2023

STATE OF NORTH CAROLINA DEPARTMENT OF TRANSPORTATION RALEIGH					
SUBSTRUCTURE END BENT 1 SECTIONS					
REVISIONS					
NO.	BY:	DATE:	NO.	BY:	DATE:
1			3		
2			4		

SHEET NO.				
S-35				
TOTAL SHEETS				
48				

DOCUMENT NOT CONSIDERED  
 FINAL UNLESS ALL  
 SIGNATURES COMPLETED

DRAWN BY :	D.R. DRUM	DATE :	09/2022
CHECKED BY :	S. NATARAJAN	DATE :	10/2022
DESIGN ENGINEER OF RECORD :	G. COLS	DATE :	12/2022