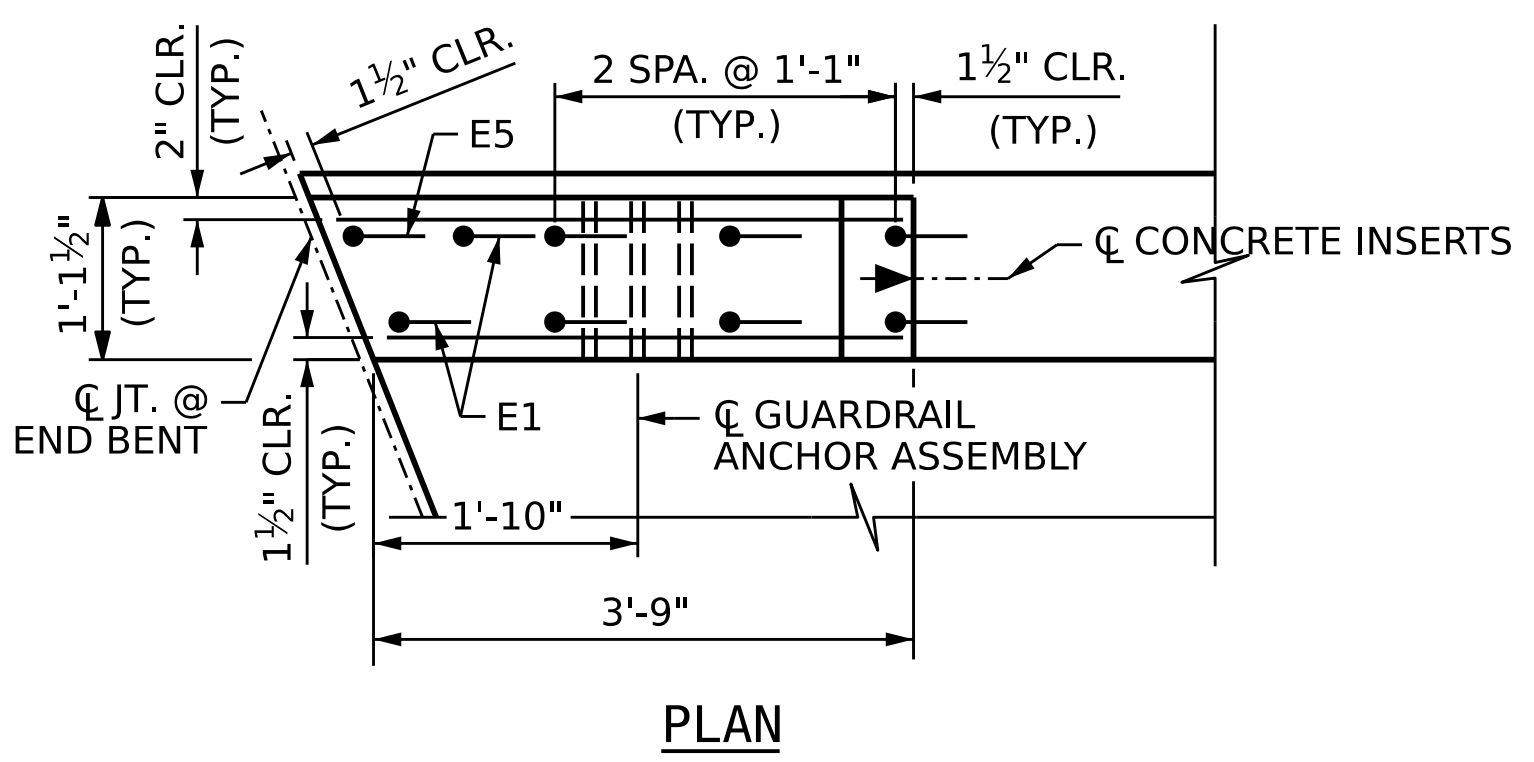
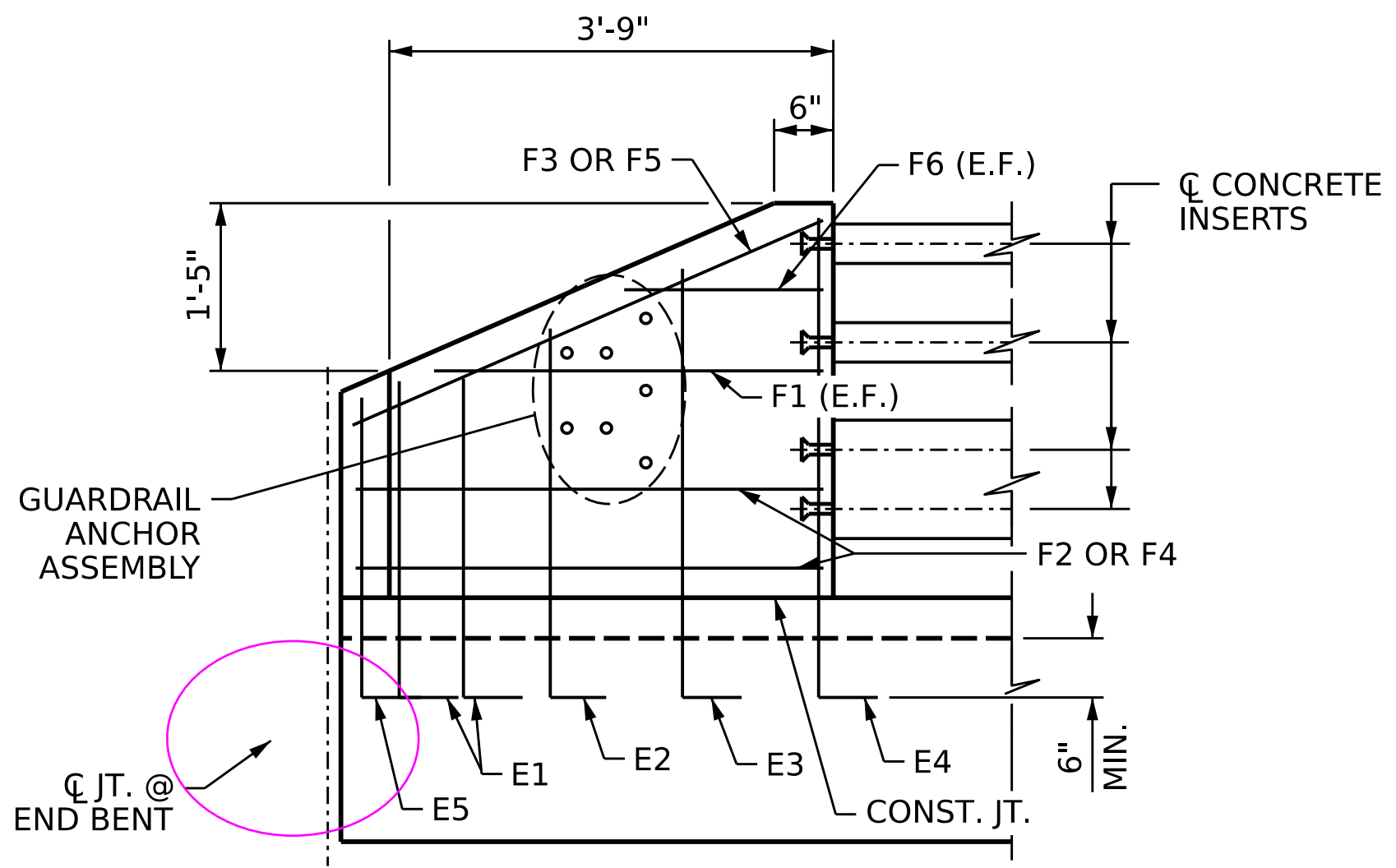


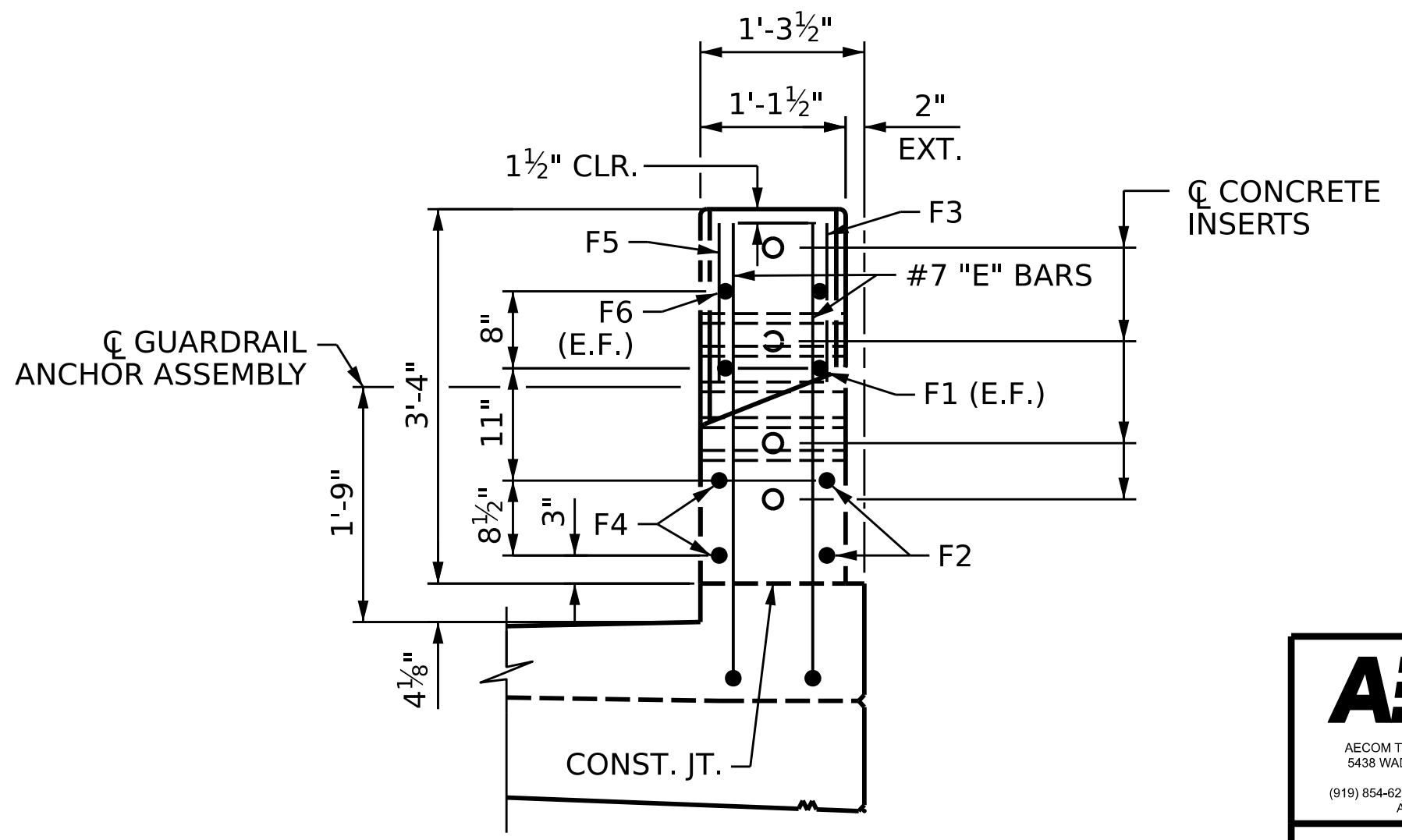
PLAN OF RAIL POST SPACING



PLAN



ELEVATION



END VIEW

END POST DETAILS

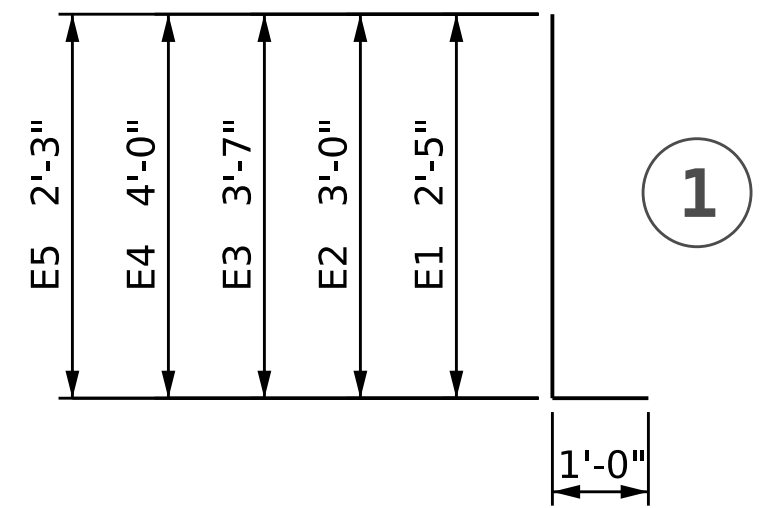
BILL FOR ONE END POST

(4 REQUIRED)

BAR	NO.	SIZE	TYPE	LENGTH	WEIGHT
* E1	2	#7	1	3'-5"	14
* E2	2	#7	1	4'-0"	16
* E3	2	#7	1	4'-7"	19
* E4	2	#7	1	5'-0"	20
* E5	1	#7	1	3'-3"	7
* F1	2	#6	STR	3'-3"	10
* F2	2	#6	STR	3'-5"	10
* F3	1	#6	STR	3'-9"	6
* F4	2	#6	STR	3'-10"	12
* F5	1	#6	STR	4'-4"	7
* F6	2	#6	STR	1'-8"	5

*EPOXY COATED REINFORCING STEEL 126 LBS
CLASS AA CONCRETE 0.5 CY.

BAR TYPE



ALL BAR DIMENSIONS ARE OUT TO OUT

NOTES:

FOR DETAILS OF CONCRETE INSERTS, AND GUARDRAIL ANCHOR ASSEMBLIES, SEE "GUARDRAIL ANCHORAGE DETAILS FOR METAL RAILS" & "3 BAR METAL RAIL" SHEETS.

NO ADDITIONAL PAYMENT SHALL BE MADE FOR THE CONCRETE END POST AS THIS IS CONSIDERED INCIDENTAL TO THE CONSTRUCTION OF THE 3 BAR METAL RAIL.

E.F.: EACH FACE

PROJECT NO. BR-0041
ROCKINGHAM COUNTY
STATION: POT 34+73.00 -L-

REVISIONS						SHEET NO.
NO.	BY:	DATE:	NO.	BY:	DATE:	S-24
1			3			TOTAL SHEETS
2			4			48

DRAWN BY : B.T. LEROY DATE : 11/2022
CHECKED BY : S. NATARAJAN DATE : 11/2022
DESIGN ENGINEER OF RECORD: G. COLS DATE : 12/2022

DOCUMENT NOT CONSIDERED FINAL UNLESS ALL SIGNATURES COMPLETED