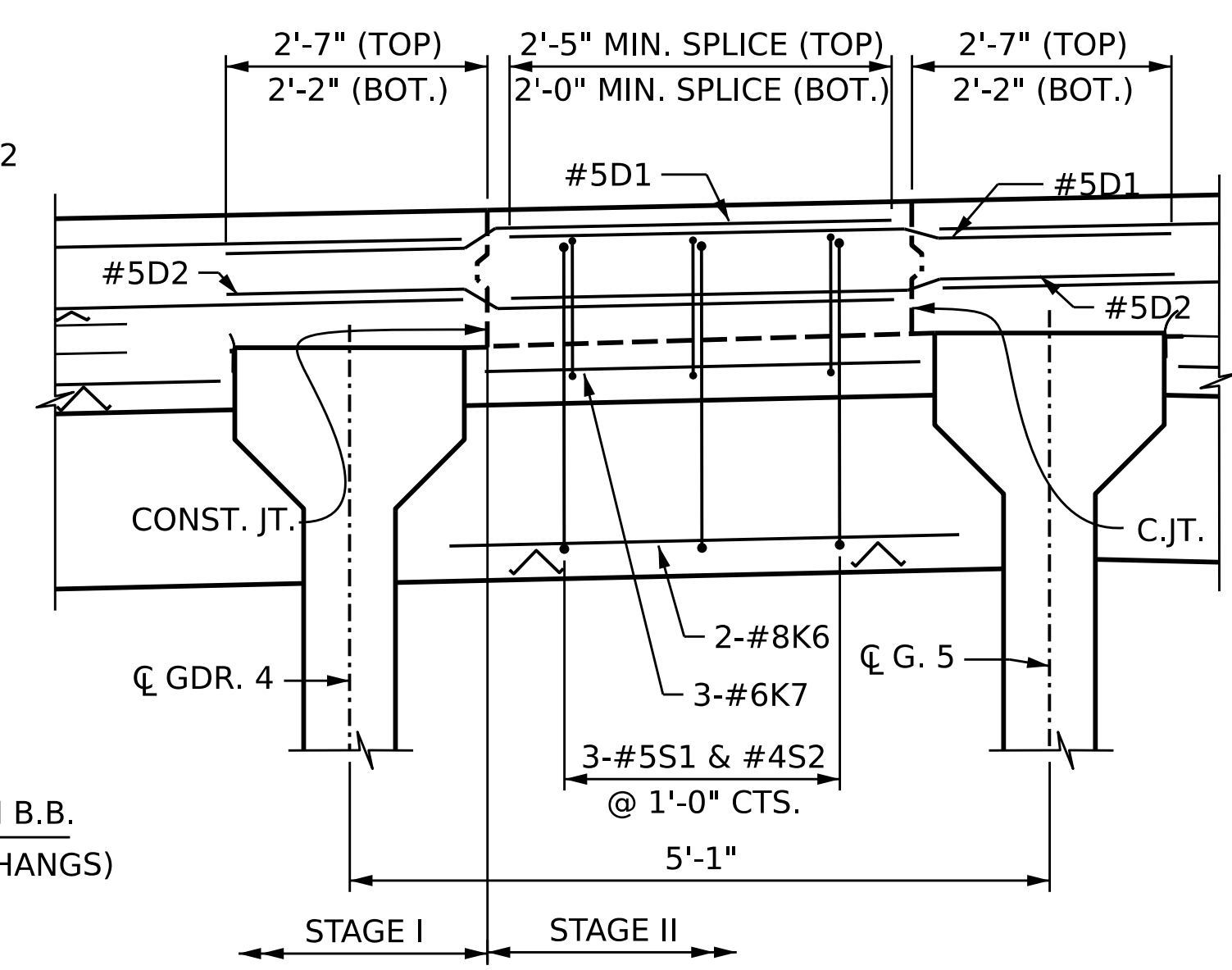


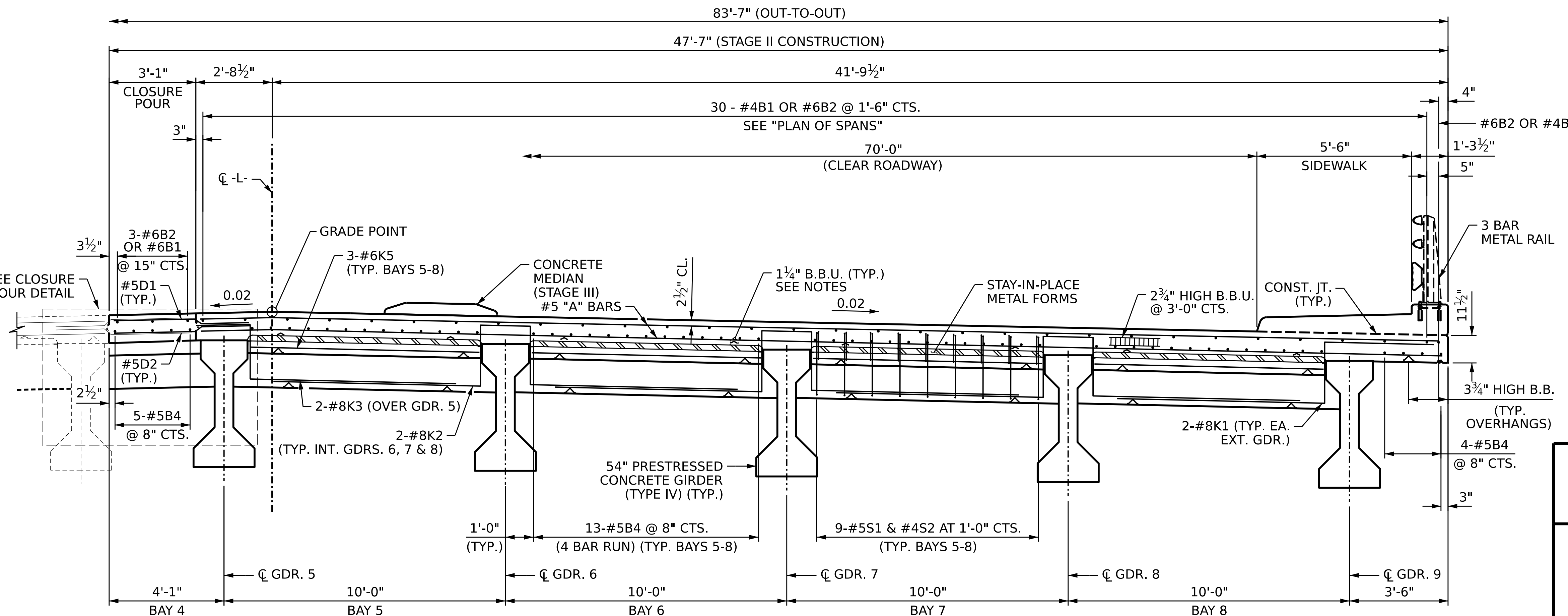
**TYPICAL SECTION AT LINK SLAB**



**CLOSURE POUR DETAIL**  
DECK CLOSURE POUR DETAIL @ END BENT

**NOTES:**

- FOR PART TYPICAL SECTION AT INTERMEDIATE DIAPHRAGM, SEE SHEET 1
- FOR NOTES, SEE SHEET 1



**TYPICAL SECTION**  
SECTION SHOWN AT END BENT, SIMILAR AT MIDSPAN

**"B" BAR KEY**

- = NON-CONTINUOUS BAR RUN FOR NEGATIVE MOMENT REGIONS. SEE "PLAN OF SPANS" SHEET
- = CONTINUOUS BAR RUN SEE "PLAN OF SPANS" SHEET

PROJECT NO. BR-0041  
ROCKINGHAM COUNTY  
STATION: POT 34+73.00 -L-  
SHEET 2 OF 3

**AECOM**  
AECOM TECHNICAL SERVICES OF NC, INC.  
5430 WADE PARK BOULEVARD, SUITE 200  
RALEIGH, NC 27607  
(919) 854-6200  
www.aecom.com  
AECOM License No. F0242

**NORTH CAROLINA PROFESSIONAL SEAL**  
2023  
DANIEL DRUM  
REGISTERED PROFESSIONAL ENGINEER  
CARRIED R. COLS.

STATE OF NORTH CAROLINA DEPARTMENT OF TRANSPORTATION RALEIGH					
SUPERSTRUCTURE <b>TYPICAL SECTION</b> STAGE II AND PART STAGE III					
REVISIONS					
NO.	BY:	DATE:	NO.	BY:	DATE:
1			3		
2			4		
SHEET NO.					S-10
TOTAL SHEETS					48

DRAWN BY :	M.L. CATER	DATE :	10/2022
CHECKED BY :	G.R. COLS	DATE :	10/2022
DESIGN ENGINEER OF RECORD:	G. COLS	DATE :	12/2022

DOCUMENT NOT CONSIDERED  
FINAL UNLESS ALL  
SIGNATURES COMPLETED