

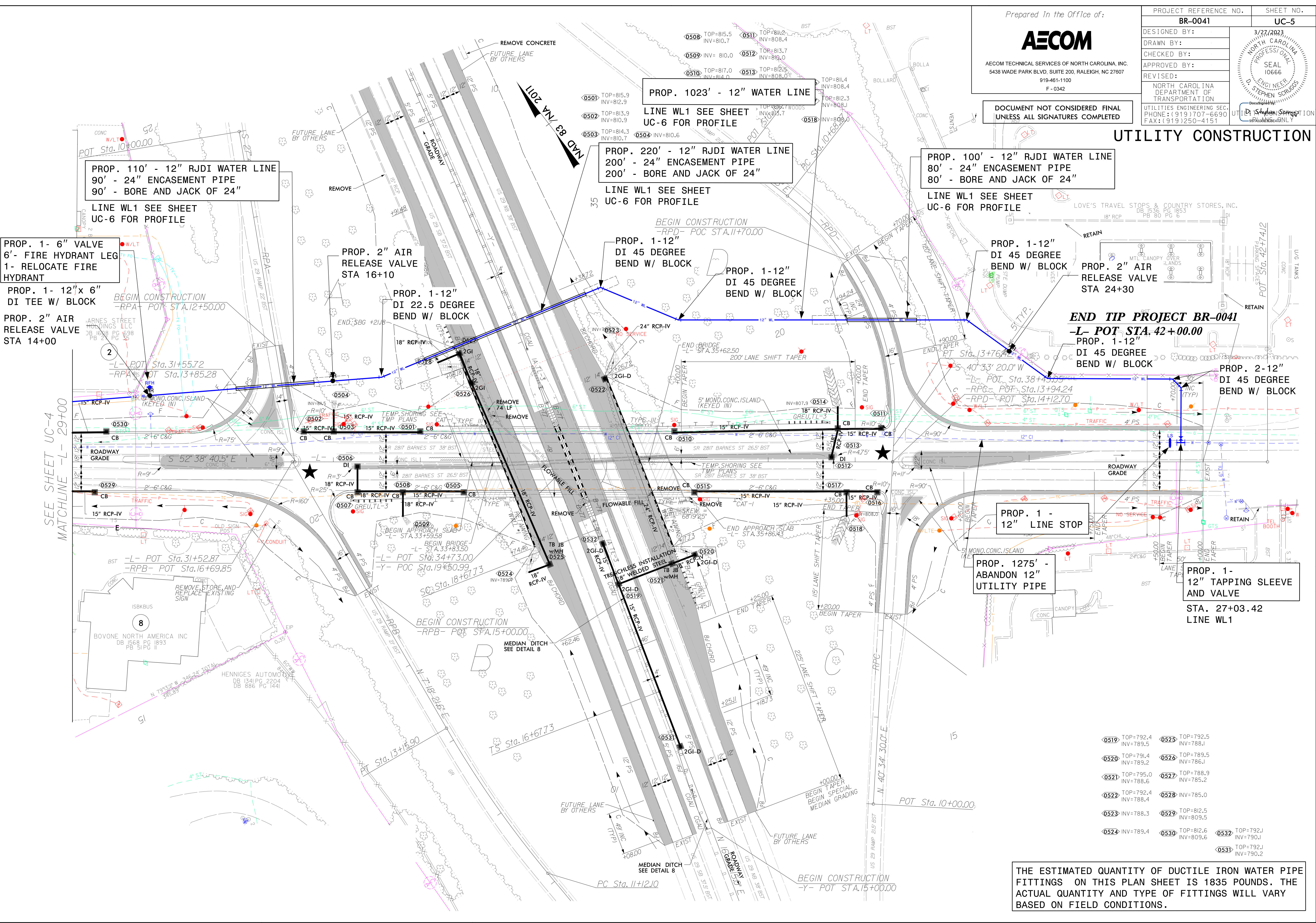


AECOM TECHNICAL SERVICES OF NORTH CAROLINA, INC.  
5438 WADE PARK BLVD, SUITE 200, RALEIGH, NC 27607  
919-461-1100  
F-0342

DOCUMENT NOT CONSIDERED FINAL  
UNLESS ALL SIGNATURES COMPLETED

PROJECT REFERENCE NO.	SHEET NO.
BR-0041	UC-5
DESIGNED BY:	3/27/2023
DRAWN BY:	
CHECKED BY:	
APPROVED BY:	
REVISED:	
UTILITIES ENGINEERING SEC. PHONE: (919) 707-6690 FAX: (919) 250-4151	

### UTILITY CONSTRUCTION



PROP. 110' - 12" RJDI WATER LINE  
90' - 24" ENCASEMENT PIPE  
90' - BORE AND JACK OF 24"  
LINE WL1 SEE SHEET UC-6 FOR PROFILE

PROP. 1023' - 12" WATER LINE  
LINE WL1 SEE SHEET UC-6 FOR PROFILE

PROP. 220' - 12" RJDI WATER LINE  
200' - 24" ENCASEMENT PIPE  
200' - BORE AND JACK OF 24"  
LINE WL1 SEE SHEET UC-6 FOR PROFILE

PROP. 100' - 12" RJDI WATER LINE  
80' - 24" ENCASEMENT PIPE  
80' - BORE AND JACK OF 24"  
LINE WL1 SEE SHEET UC-6 FOR PROFILE

PROP. 1- 6" VALVE  
6'- FIRE HYDRANT LEG  
1- RELOCATE FIRE HYDRANT

PROP. 1- 12"x 6" DI TEE W/ BLOCK  
PROP. 2" AIR RELEASE VALVE STA 14+00

PROP. 2" AIR RELEASE VALVE STA 16+10

PROP. 1-12" DI 22.5 DEGREE BEND W/ BLOCK

PROP. 1-12" DI 45 DEGREE BEND W/ BLOCK

PROP. 1-12" DI 45 DEGREE BEND W/ BLOCK

PROP. 1-12" DI 45 DEGREE BEND W/ BLOCK

PROP. 2" AIR RELEASE VALVE STA 24+30

END TIP PROJECT BR-0041  
-L- POT STA. 42+00.00  
PROP. 1-12" DI 45 DEGREE BEND W/ BLOCK

PROP. 2-12" DI 45 DEGREE BEND W/ BLOCK

PROP. 1 - 12" LINE STOP

PROP. 1275' - ABANDON 12" UTILITY PIPE

PROP. 1- 12" TAPPING SLEEVE AND VALVE STA. 27+03.42 LINE WL1

0519	TOP=792.4 INV=789.5	0525	TOP=792.5 INV=788.1
0520	TOP=791.4 INV=789.2	0526	TOP=789.5 INV=786.1
0521	TOP=795.0 INV=788.6	0527	TOP=788.9 INV=785.2
0522	TOP=792.4 INV=788.4	0528	INV=785.0
0523	INV=788.3	0529	TOP=812.5 INV=809.5
0524	INV=789.4	0530	TOP=812.6 INV=809.6
		0532	TOP=792.1 INV=790.1
		0531	TOP=792.2 INV=790.2

THE ESTIMATED QUANTITY OF DUCTILE IRON WATER PIPE FITTINGS ON THIS PLAN SHEET IS 1835 POUNDS. THE ACTUAL QUANTITY AND TYPE OF FITTINGS WILL VARY BASED ON FIELD CONDITIONS.