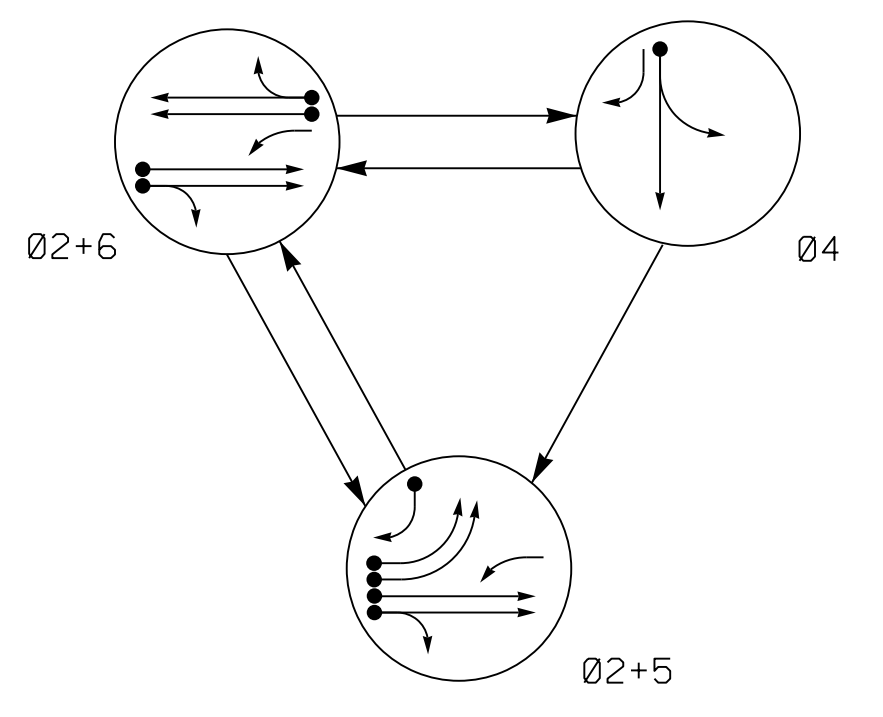


**PHASING DIAGRAM**



**TABLE OF OPERATION**

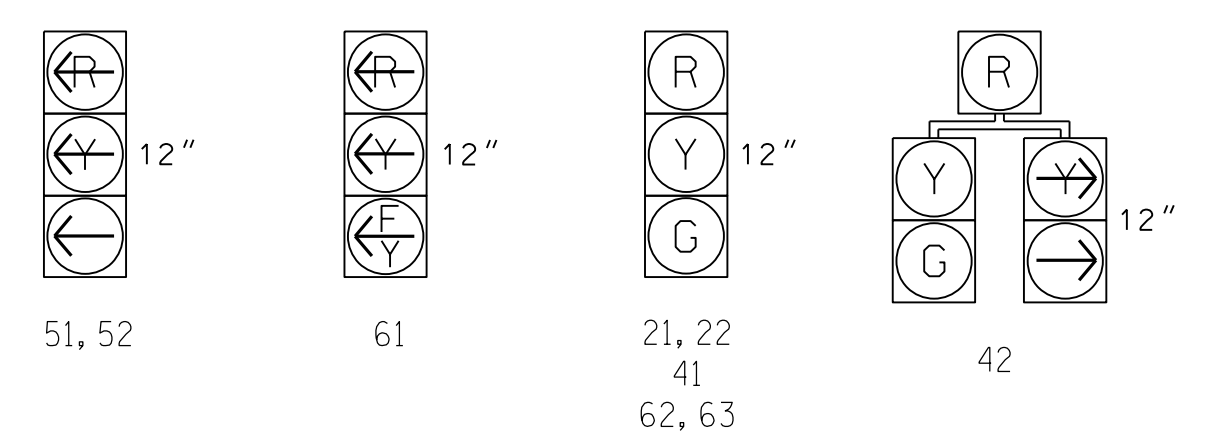
SIGNAL FACE	PHASE			
	02+5	02+6	04	FLASH
21, 22	G	G	R	Y
41	R	R	G	R
42	R	R	G	R
51, 52	R	R	R	R
61	F	F	R	Y
62, 63	R	G	R	Y

**SIGNAL FACE I.D.**

All Heads L.E.D.

**PHASING DIAGRAM DETECTION LEGEND**

- DETECTED MOVEMENT
- UNDETECTED MOVEMENT (OVERLAP)
- UNSIGNALIZED MOVEMENT
- PEDESTRIAN MOVEMENT



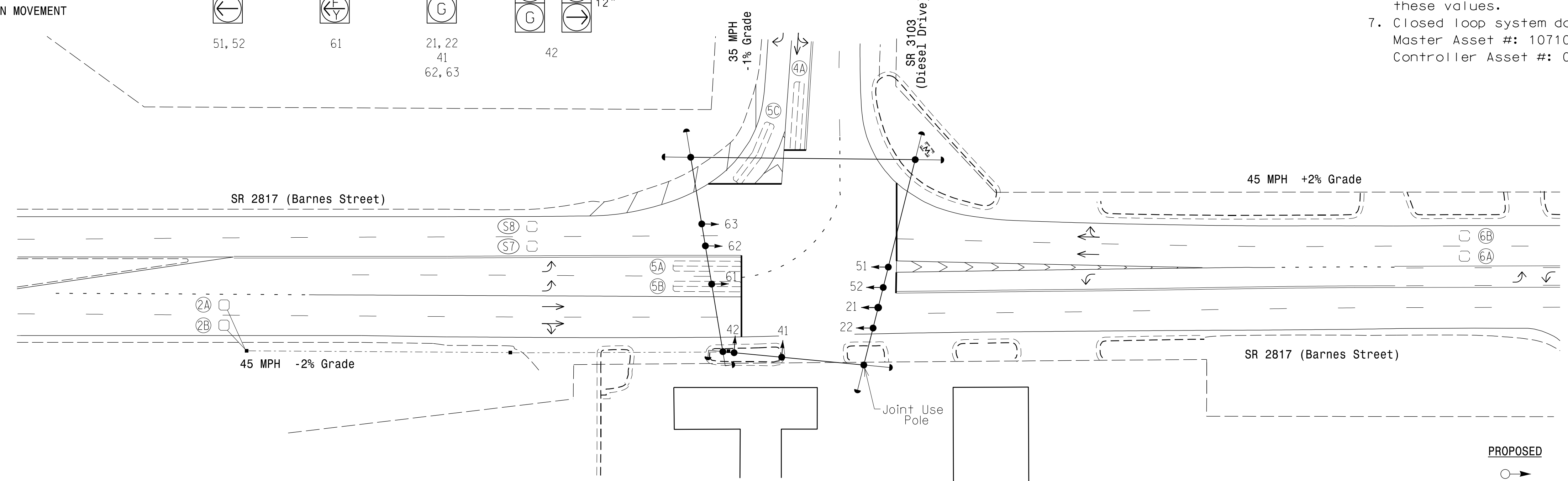
**MAXTIME DETECTOR INSTALLATION CHART**

LOOP	SIZE (FT)	DISTANCE FROM STOPBAR (FT)	TURNS	NEW LOOP	PROGRAMMING									
					CALL PHASE	DELAY TIME	EXTEND TIME	EXTEND	ADDED INITIAL	QUEUE	CALL	PASSAGE 2	SYSTEM LOOP	NEW CARD
2A	6X6	300	5	X	2	-	-	X	X	-	X	-	-	X
2B	6X6	300	5	X	2	-	-	X	X	-	X	-	-	X
4A	6X40	0	2-4-2	-	4	3	-	X	-	X	-	-	-	-
5A	6X40	0	2-4-2	-	5	3	-	X	-	X	-	-	-	-
5B	6X40	0	2-4-2	-	5	-	-	X	-	X	-	-	-	-
5C	6X40	0	2-4-2	-	5	15	-	X	-	X	-	-	-	-
6A	6X6	300	Exist	-	6	-	-	X	X	-	X	-	-	-
6B	6X6	300	Exist	-	6	-	-	X	X	-	X	-	-	-
S7	6X6	+210	Exist	-	-	-	-	-	-	-	-	-	X	-
S8	6X6	+210	Exist	-	-	-	-	-	-	-	-	-	X	-

**3 Phase Fully Actuated**  
**NC 87/SR 2817 (Barnes Street) CLS**  
**Signal System #: D07-10\_Reidsville**

**NOTES**

- Refer to "Roadway Standard Drawings NCDOT" dated January 2018 and "Standard Specifications for Roads and Structures" dated January 2018.
- Do not program signal for late night flashing operation unless otherwise directed by the Engineer.
- Phase 5 may be lagged.
- Set all detector units to presence mode.
- Pavement markings are existing.
- Maximum times shown in timing chart are for free-run operation only. Coordinated signal system timing values supersede these values.
- Closed loop system data:  
 Master Asset #: 10710.  
 Controller Asset #: 0888.



**MAXTIME TIMING CHART**

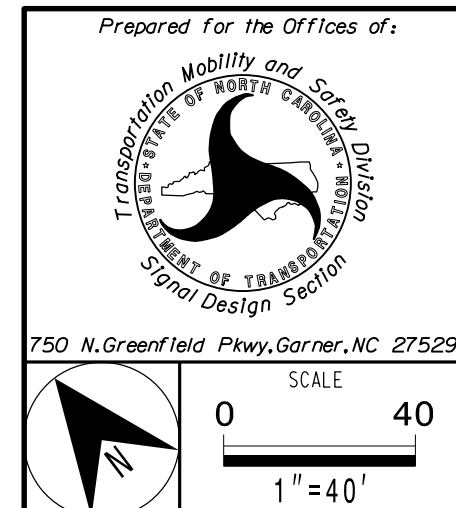
FEATURE	PHASE			
	2	4	5	6
Walk *	-	-	-	-
Ped Clear *	-	-	-	-
Min Green	12	7	7	12
Passage *	6.0	2.0	2.0	6.0
Passage 2 *	-	-	-	-
Max 1 *	100	30	40	100
Yellow Change	4.7	3.9	3.0	4.7
Red Clear	1.4	2.4	2.8	1.4
Added Initial *	1.5	-	-	1.5
Maximum Initial *	34	-	-	34
Time Before Reduction *	20	-	-	20
Time To Reduce *	30	-	-	30
Minimum Gap	3.0	-	-	3.0
Advance Walk	-	-	-	-
Non Lock Detector	-	X	X	-
Vehicle Recall	MIN RECALL	-	-	MIN RECALL
Dual Entry	-	-	-	-

\* These values may be field adjusted. Do not adjust Min Green and Extension times for phases 2 and 6 lower than what is shown. Min Green for all other phases should not be lower than 4 seconds.

**LEGEND**

- | PROPOSED                                | EXISTING                                |
|---|---|
| ○ → Traffic Signal Head                 | ● → Traffic Signal Head                 |
| ○ → Modified Signal Head                | N/A                                     |
| ○ → Sign                                | ○ → Sign                                |
| ○ → Pedestrian Signal Head              | ○ → Pedestrian Signal Head              |
| ○ → Signal Pole with Push Button & Sign | ○ → Signal Pole with Push Button & Sign |
| ○ → Signal Pole with Guy                | ○ → Signal Pole with Guy                |
| ○ → Signal Pole with Sidewalk Guy       | ○ → Signal Pole with Sidewalk Guy       |
| ○ → Inductive Loop Detector             | ○ → Inductive Loop Detector             |
| ○ → Controller & Cabinet                | ○ → Controller & Cabinet                |
| ○ → Junction Box                        | ○ → Junction Box                        |
| ○ → 2-in Underground Conduit            | ○ → 2-in Underground Conduit            |
| N/A → Right of Way                      | ○ → Right of Way                        |
| ○ → Directional Arrow                   | ○ → Directional Arrow                   |
| ○ → Master Controller & Cabinet         | ○ → Master Controller & Cabinet         |

**Signal Upgrade - Final Design**



**SR 2817 (Barnes Street) at SR 3103 (Diesel Drive)**

Division 7 Rockingham County Reidsville

PLAN DATE: Jan 2023 REVIEWED BY: H.M. Surti

PREPARED BY: M.D. Tindal REVIEWED BY:

REVISIONS	INIT.	DATE

DOCUMENT NOT CONSIDERED FINAL UNLESS ALL SIGNATURES COMPLETED

SEAL

STATE OF NORTH CAROLINA

PROFESSIONAL ENGINEER

SEAL 034481

HEWANG M. SURTI

DocuSigned by: Hewang M. Surti 3/10/2023

STG: INVENTORY NO. 07-0888

3/10/2023 10:44:43 AM C:\Users\mjbent\OneDrive\Documents\60581577\NCDOT\_SMI\_BR-0041\300-CAD\_6154910-CAD\70-NCDOT\_TIP\Signal\0888.sig\_dsn-2022XXXX.dgn