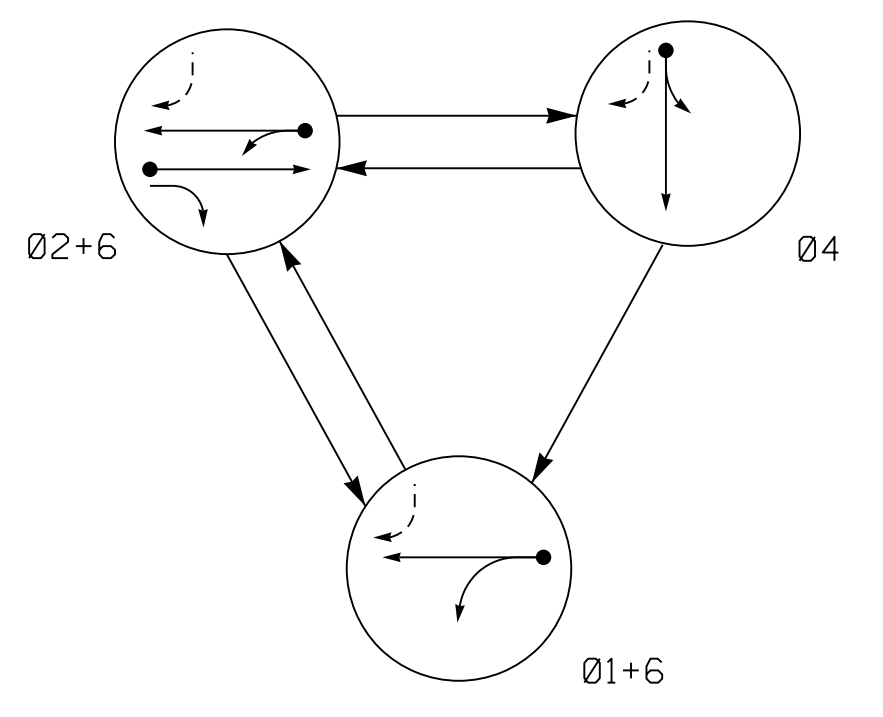
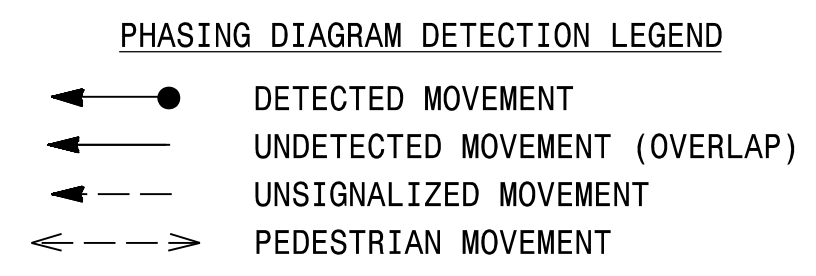
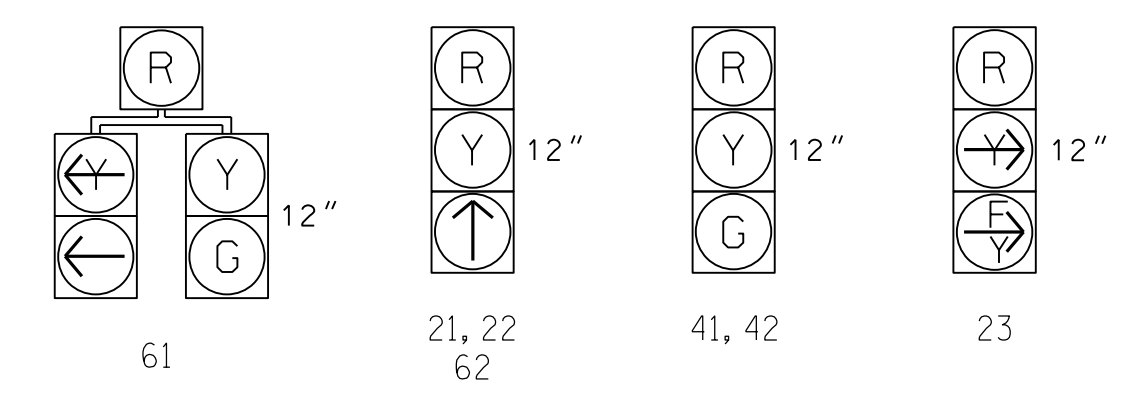


PHASING DIAGRAM



SIGNAL FACE	PHASE			
	Ø 1 + 6	Ø 2 + 6	Ø 4	FLASH
21, 22	R	↑	R	Y
23	R	↓	R	Y
41, 42	R	R	G	R
61	←	G	R	Y
62	↑	↑	R	Y

SIGNAL FACE I.D.
All Heads L.E.D.



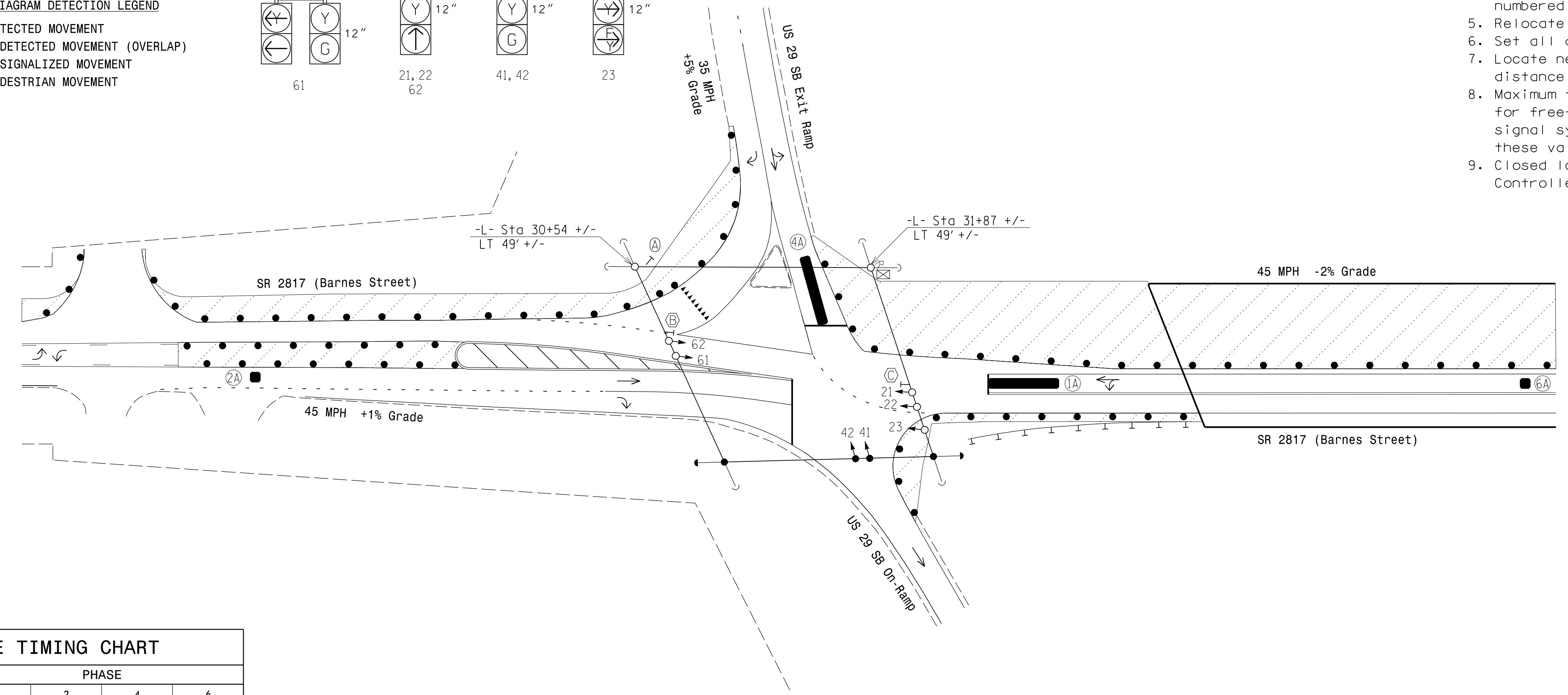
MAXTIME DETECTOR INSTALLATION CHART												
ZONE	SIZE (FT)	DISTANCE FROM STOPBAR (FT)	TURNS	NEW LOOP	PROGRAMMING							
					CALL PHASE	DELAY TIME	EXTEND TIME	EXTEND	ADDED INITIAL	QUEUE	CALL	PASSAGE 2
1A*	6X40	0	*	*	1	10	-	X	-	X	-	*
2A*	6X6	300	*	*	2	-	-	X	X	-	X	*
4A*	6X40	0	*	*	4	-	-	X	-	X	-	*
6A*	6X6	300	*	*	6	-	-	X	X	-	X	*

* Video Detection Zone

3 Phase Fully Actuated
NC 87/SR 2817 (Barnes Street) CLS
Signal System #: D07-10_Reidsville

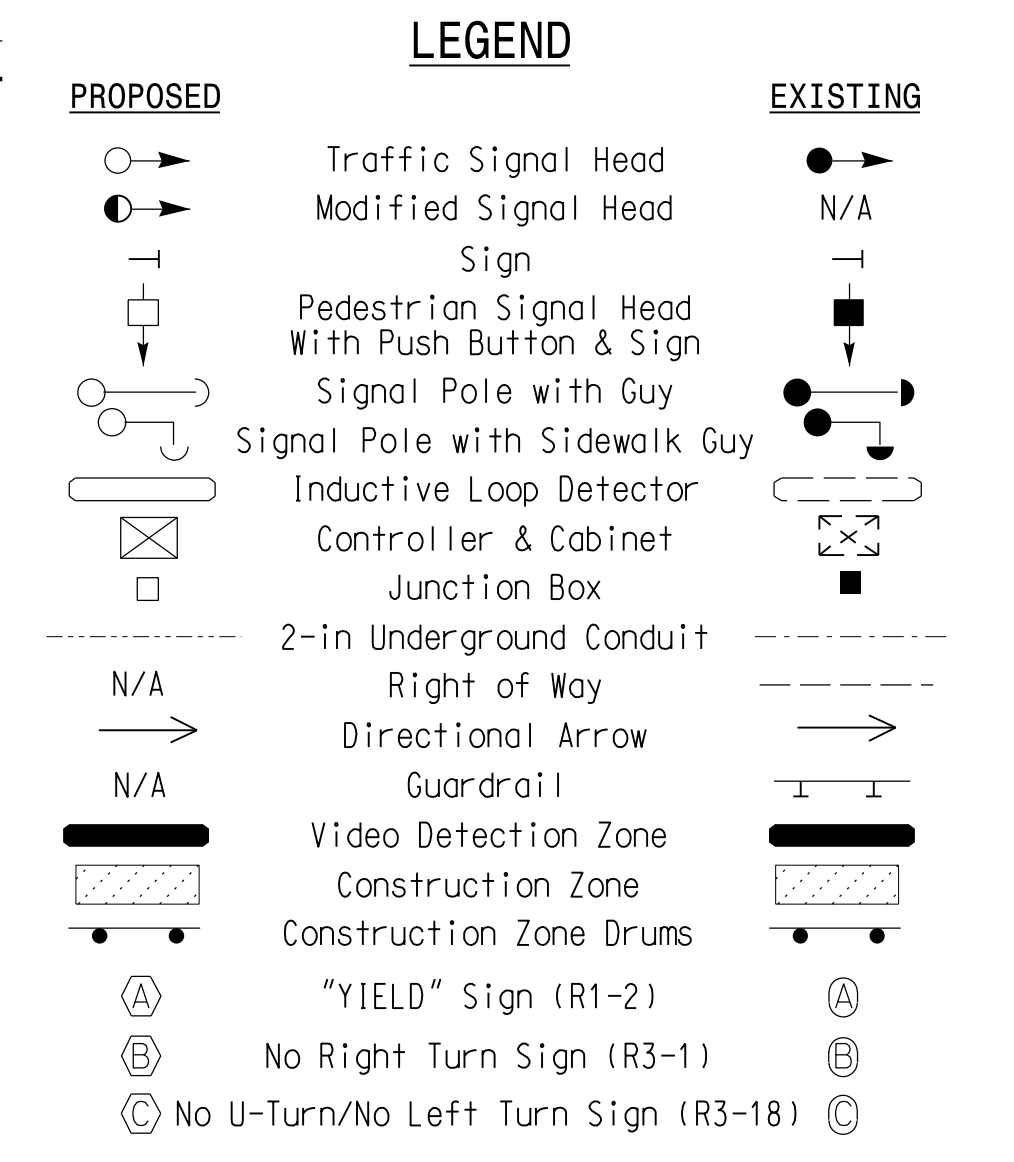
NOTES

1. Refer to "Roadway Standard Drawings NCDOT" dated January 2018 and "Standard Specifications for Roads and Structures" dated January 2018.
2. Do not program signal for late night flashing operation unless otherwise directed by the Engineer.
3. Phase 1 may be lagged.
4. Reposition existing signal heads numbered 41 and 42.
5. Relocate existing YIELD sign.
6. Set all detector units to presence mode.
7. Locate new cabinet so as not to obstruct distance of vehicles turning right on red.
8. Maximum times shown in timing chart are for free-run operation only. Coordinated signal system timing values supersede these values.
9. Closed loop system data: Controller Asset #: 1665.

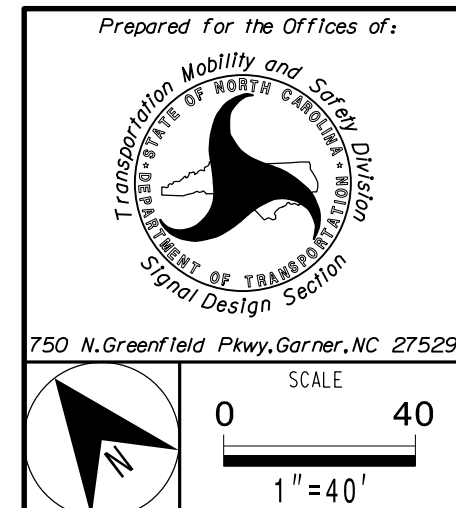


FEATURE	PHASE			
	1	2	4	6
Walk *	-	-	-	-
Ped Clear *	-	-	-	-
Min Green	7	12	7	12
Passage *	2.0	6.0	2.0	6.0
Passage 2 *	-	-	-	-
Max I *	20	90	30	90
Yellow Change	3.0	4.4	3.6	4.7
Red Clear	3.2	1.0	1.8	1.6
Added Initial *	-	2.5	-	2.5
Maximum Initial *	-	34	-	34
Time Before Reduction *	-	20	-	20
Time To Reduce *	-	30	-	30
Minimum Gap	-	3.0	-	3.0
Advance Walk	-	-	-	-
Non Lock Detector	X	-	X	-
Vehicle Recall	-	MIN RECALL	-	MIN RECALL
Dual Entry	-	-	-	-

* These values may be field adjusted. Do not adjust Min Green and Extension times for phases 2 and 6 lower than what is shown. Min Green for all other phases should not be lower than 4 seconds.



Signal Upgrade - Temp Design 1 (TMP Phase I)



SR 2817 (Barnes Street)	
at	
US 29 SB Ramps	
Division 7	Rockingham County
Reidsville	
PLAN DATE: Jan 2023	REVIEWED BY: H.M. Surti
PREPARED BY: M.D. Tindal	REVIEWED BY:
REVISIONS	INIT. DATE

DOCUMENT NOT CONSIDERED FINAL UNLESS ALL SIGNATURES COMPLETED

SEAL

HEWANG M. SURTI
ENGINEER
034481

DocuSigned by:
Hewang M. Surti 3/10/2023
STG: INVENTORY NO. 07-166511

3/10/2023 10:44:44 AM C:\Users\paw-bentl\OneDrive\Documents\60581577-NCDDT-SM-BR-0041-300-CAD-6154910-CAD\70-NCDDT-TIP\Signal\60581577-NCDDT-SM-BR-0041-300-CAD-6154910-CAD.dwg