

-Y-
 PI Sta 18+01.07
 Δs = 0° 28' 38.9"
 Ls = 200.00'
 LT = 133.33'
 ST = 66.67'

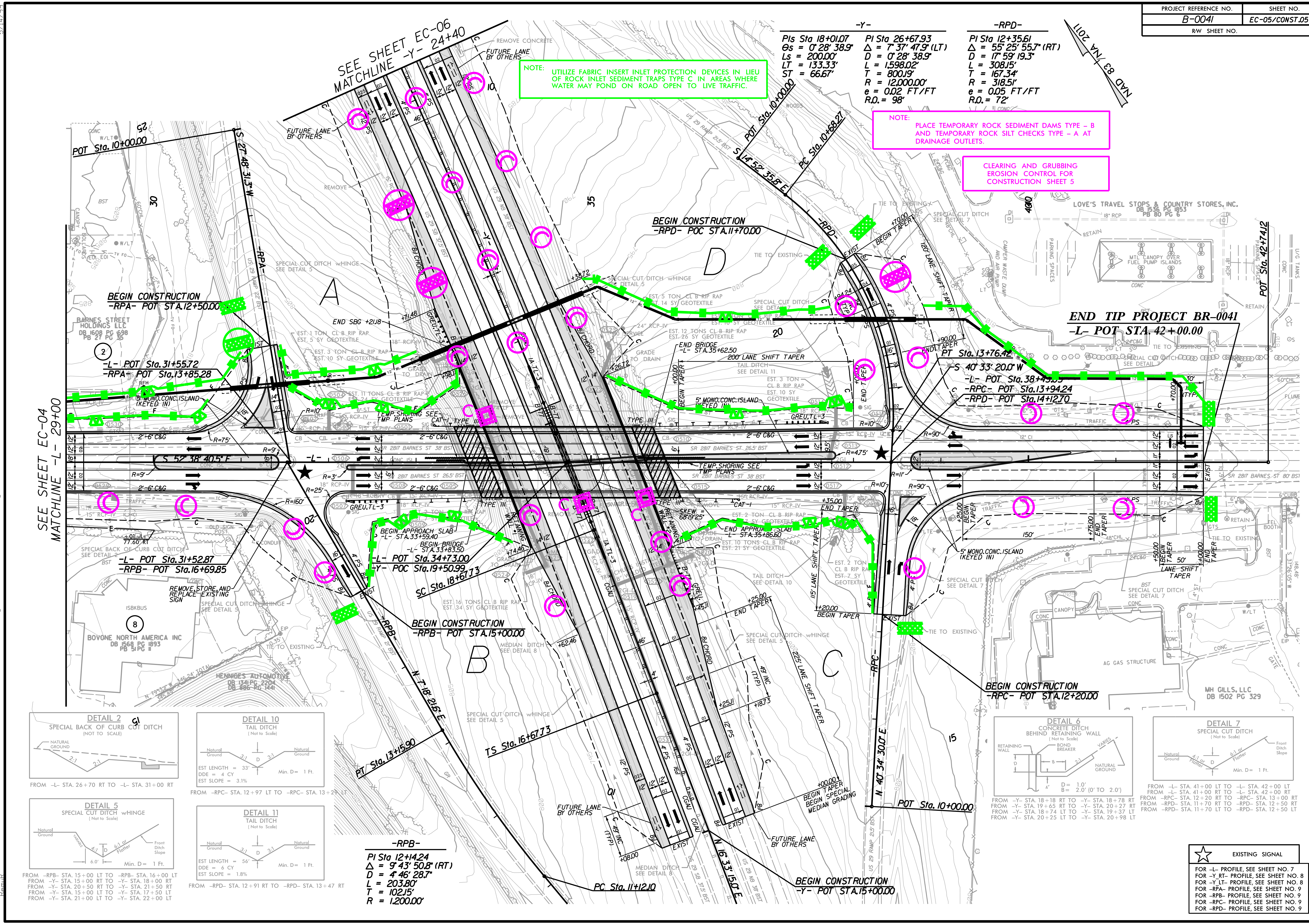
 PI Sta 26+67.93
 Δ = 7° 37' 47.9" (LT)
 D = 0° 28' 38.9"
 L = 1,598.02'
 T = 800.19'
 R = 12,000.00'
 e = 0.02 FT/FT
 R.O. = 98'

 -RPD-
 PI Sta 12+35.61
 Δ = 55° 25' 55.7" (RT)
 D = 17° 59' 19.3"
 L = 308.15'
 T = 167.34'
 R = 318.51'
 e = 0.05 FT/FT
 R.O. = 72'

NOTE: UTILIZE FABRIC INSERT INLET PROTECTION DEVICES IN LIEU OF ROCK INLET SEDIMENT TRAPS TYPE C IN AREAS WHERE WATER MAY POND ON ROAD OPEN TO LIVE TRAFFIC.

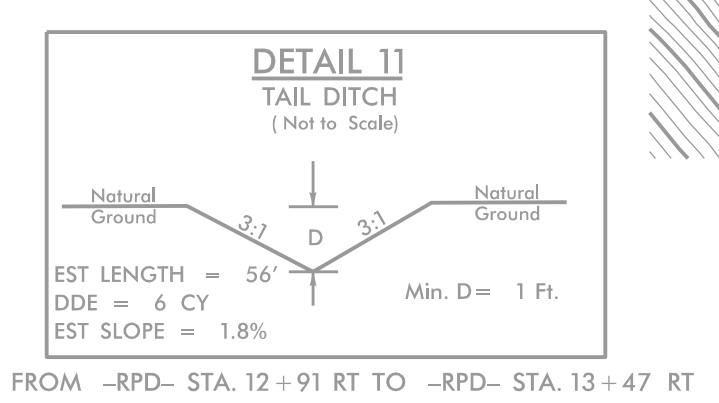
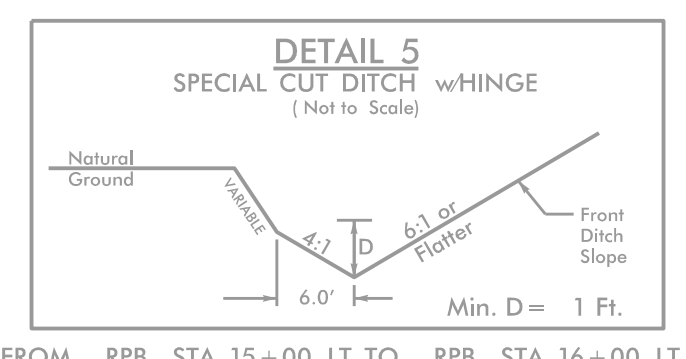
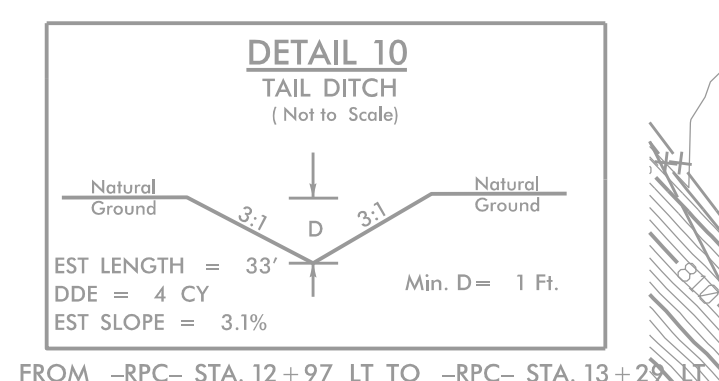
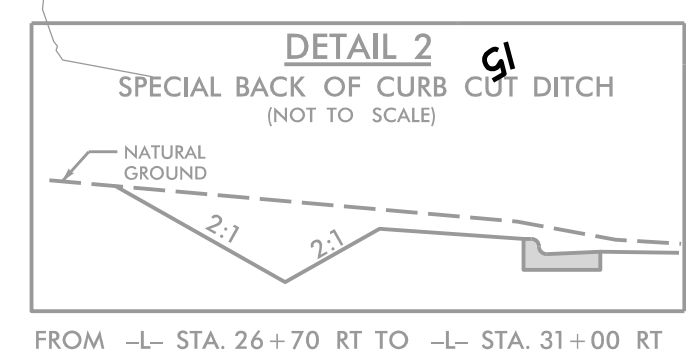
NOTE: PLACE TEMPORARY ROCK SEDIMENT DAMS TYPE - B AND TEMPORARY ROCK SILT CHECKS TYPE - A AT DRAINAGE OUTLETS.

CLEARING AND GRUBBING EROSION CONTROL FOR CONSTRUCTION SHEET 5

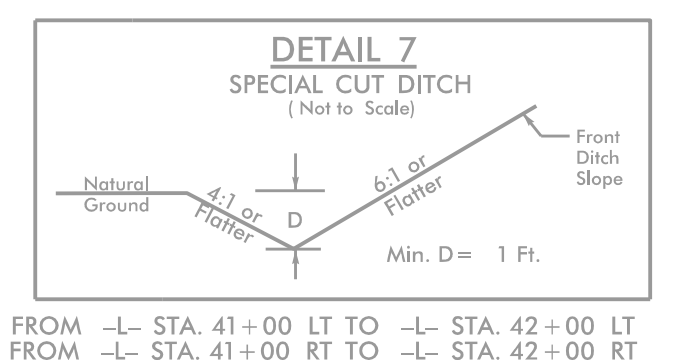
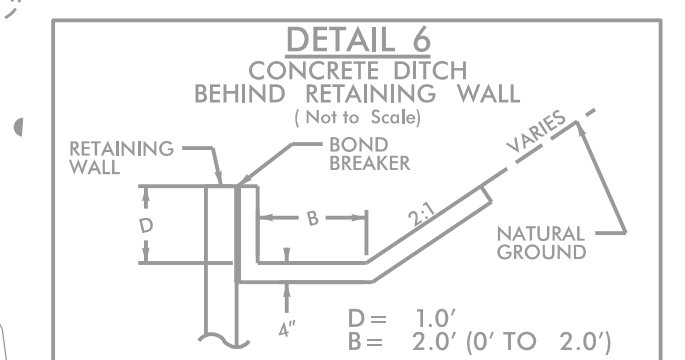


SEE SHEET EC-04
MATCHLINE -L- 29+00

SEE SHEET EC-06
MATCHLINE -Y- 24+40



-RPB-
PI Sta 12+14.24
Δ = 9° 43' 50.8" (RT)
D = 4' 46" 28.7"
L = 203.80'
T = 102.15'
R = 1,200.00'



★ EXISTING SIGNAL

FOR -L- PROFILE, SEE SHEET NO. 7
FOR -Y- RT- PROFILE, SEE SHEET NO. 8
FOR -Y- LT- PROFILE, SEE SHEET NO. 8
FOR -RPA- PROFILE, SEE SHEET NO. 9
FOR -RPB- PROFILE, SEE SHEET NO. 9
FOR -RPC- PROFILE, SEE SHEET NO. 9
FOR -RPD- PROFILE, SEE SHEET NO. 9

5/14/2019 10:53 AM P:\BR-0041\BR-0041-900-CAD\CAD\70-NCDDOT-TIP\Erosion_Contra\1\Design\230-BR0041-EC_PSH05-CC.dgn