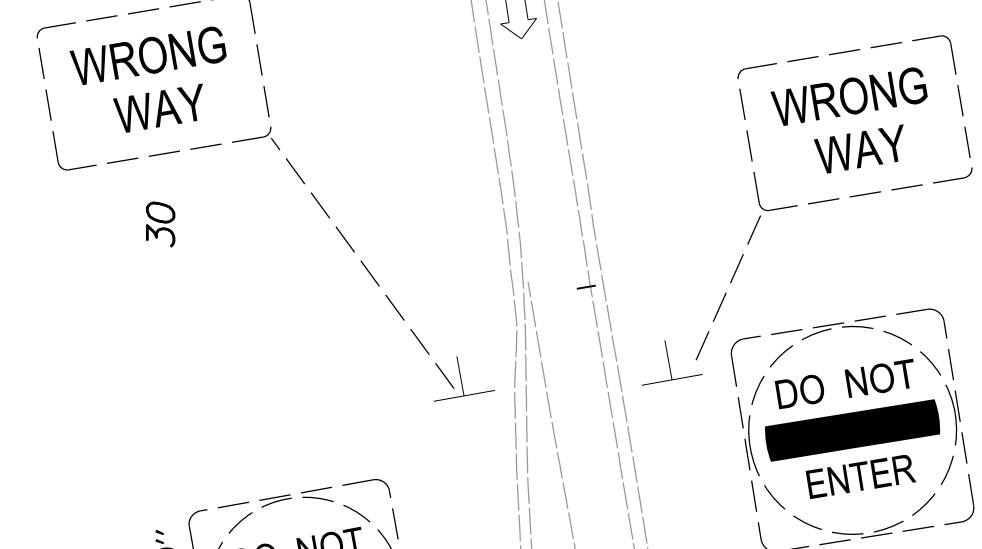
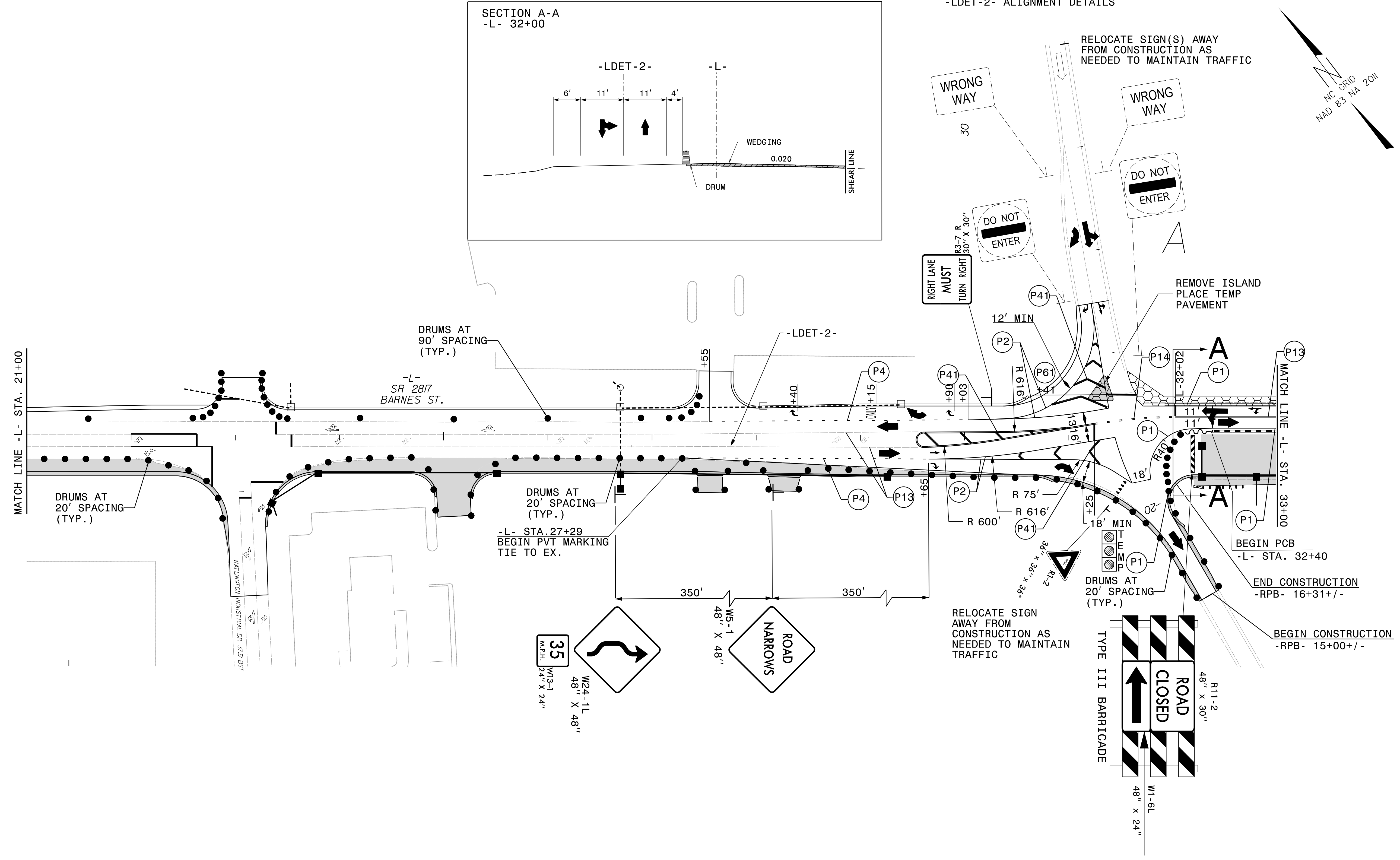
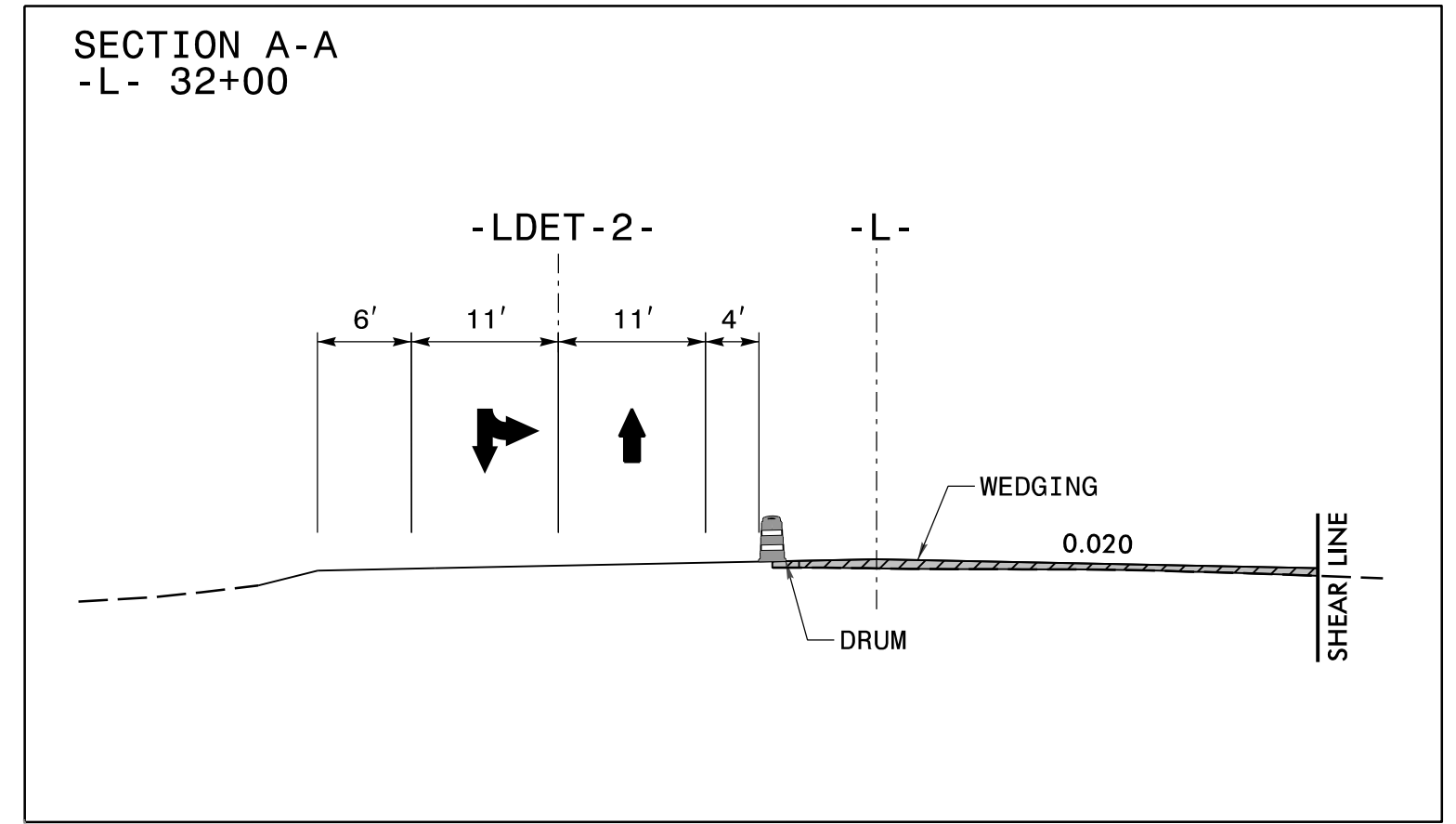
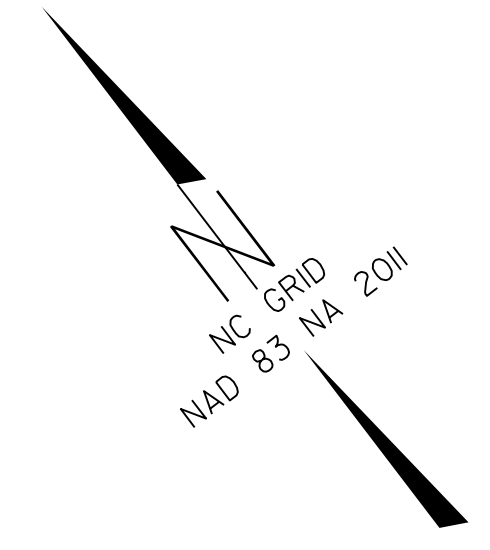


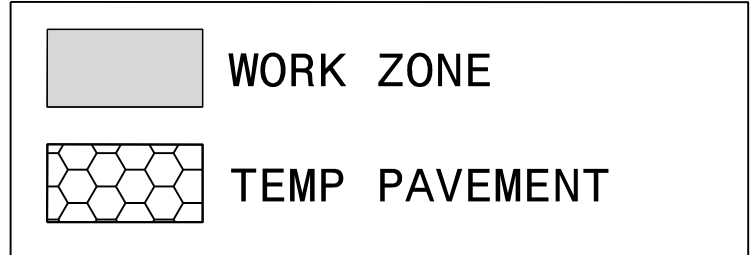
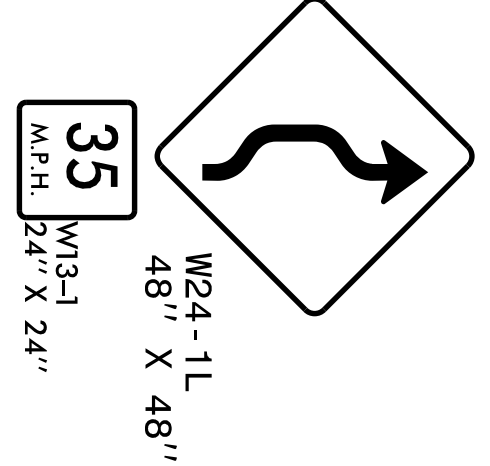
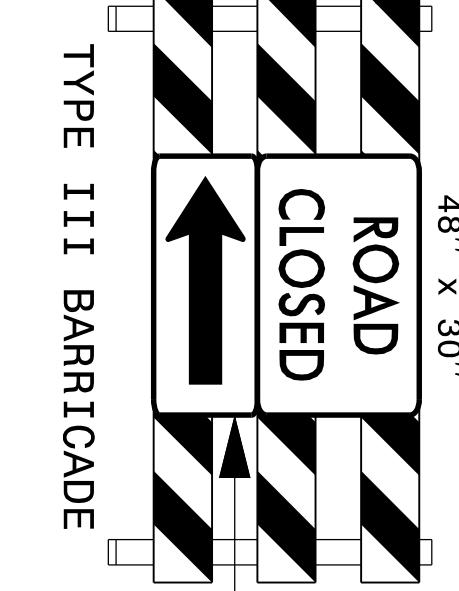
NOTE:
SEE ROADWAY PLANSHEET 2B-1 FOR
-LDET-2- ALIGNMENT DETAILS



RELOCATE SIGN(S) AWAY FROM CONSTRUCTION AS NEEDED TO MAINTAIN TRAFFIC

REMOVE ISLAND PLACE TEMP PAVEMENT

RELOCATE SIGN AWAY FROM CONSTRUCTION AS NEEDED TO MAINTAIN TRAFFIC



APPROVED: *Jeffrey A. Koenig*
DATE: 2/15/2023
SEAL



PHASE II DETAILS
SR 2817

2/15/2023
BR0041.TC_TMP_04_Ph2_sh2.dgn
jon.ar.chambault