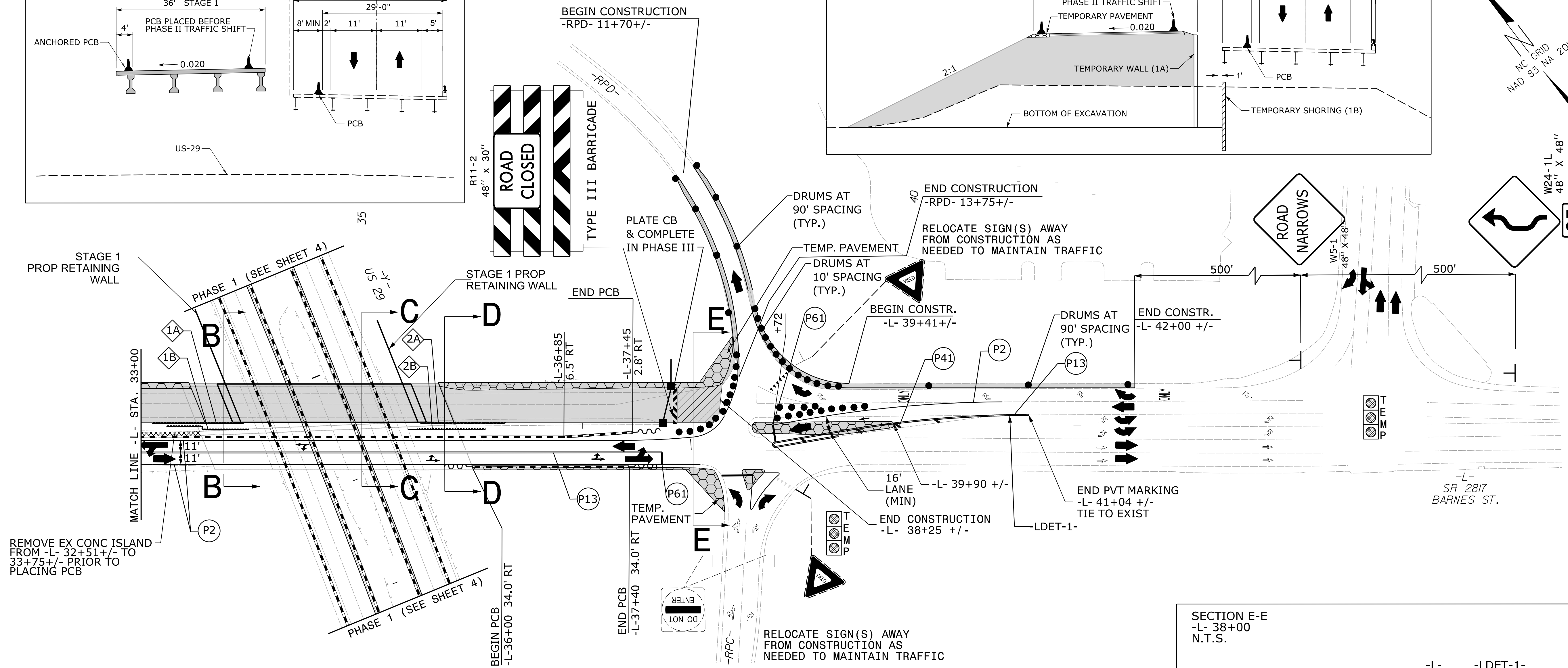
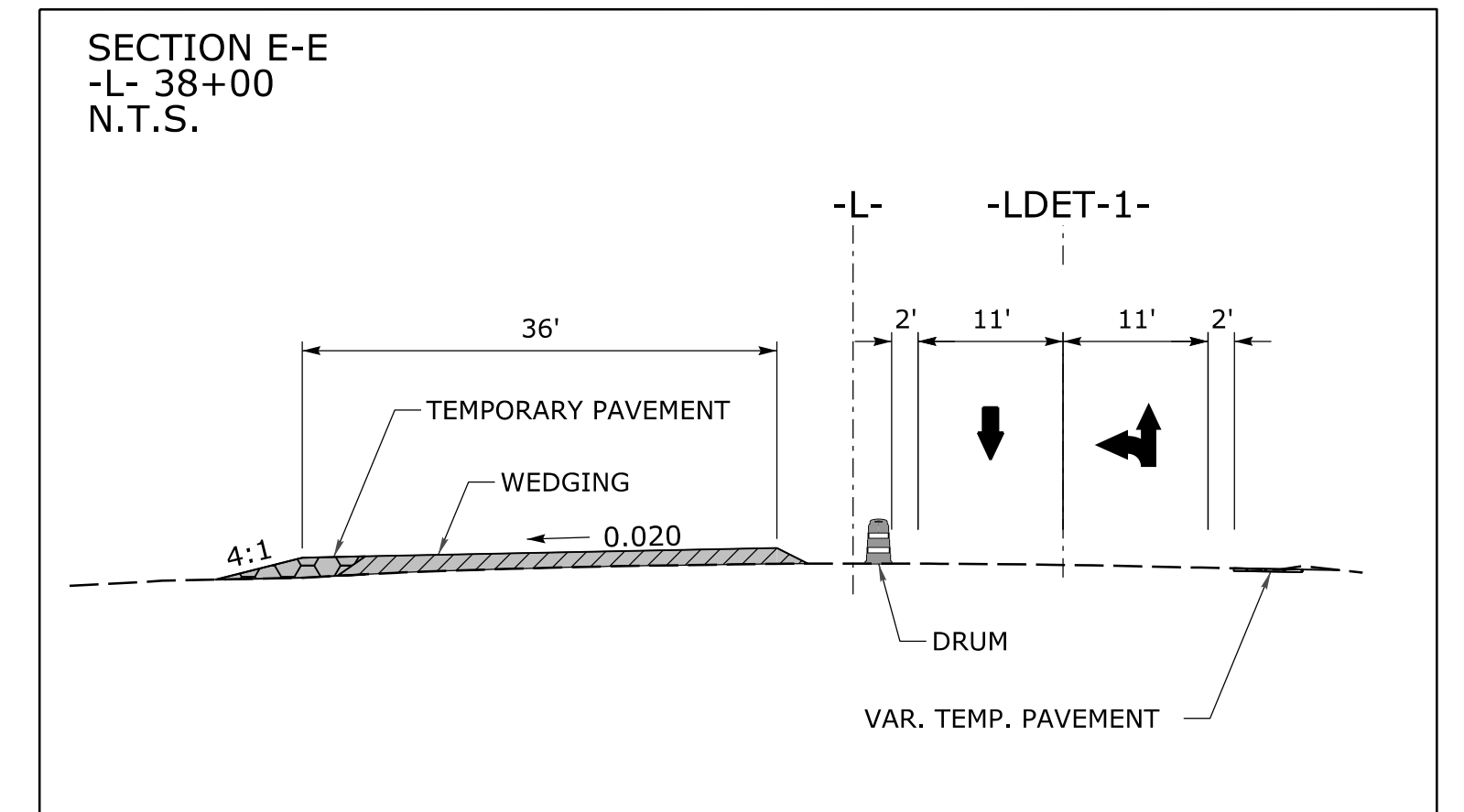
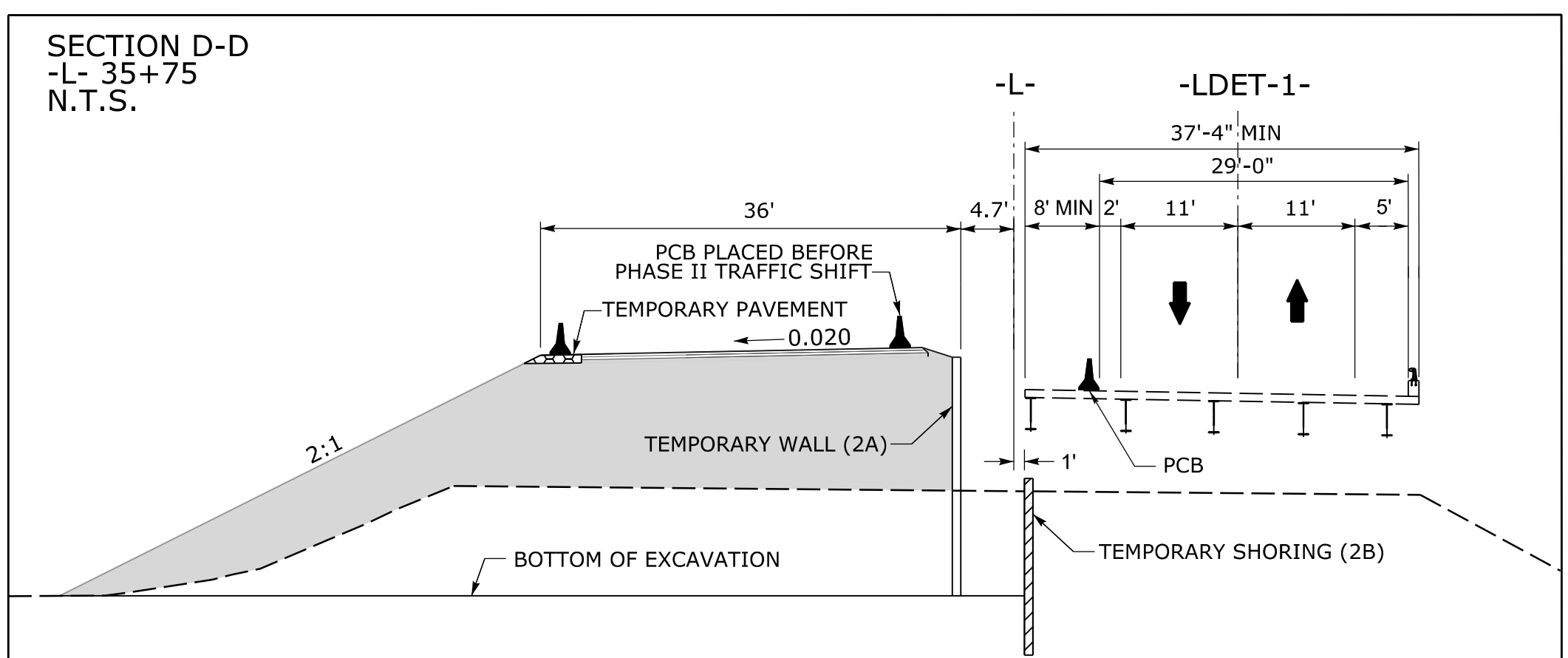


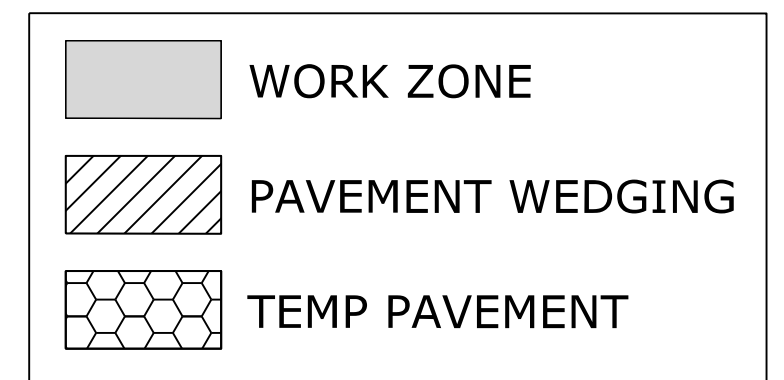
NOTE:
SEE ROADWAY PLANSHEET 2B-1 FOR -LDET-1- ALIGNMENT AND 2B-2 FOR TEMPORARY PAVEMENT DETAILS



REMOVE EX CONC ISLAND FROM -L- 32+51 +/- TO 33+75 +/- PRIOR TO PLACING PCB



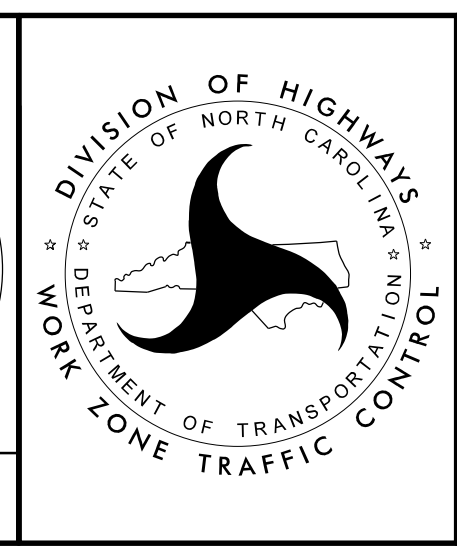
- 1A QUANTITY = 1660 SQ FT
TEMPORARY WALL
-L- STA 33+10.00, 4.6' LT
-L- STA 33+93.00, 4.6' LT
- 1B QUANTITY = 1920 SQ FT
TEMPORARY SHORING
-L- STA 33+18.00, 2.0' LT
-L- STA 33+55.00, 2.0' LT
-L- STA 33+56.00, 1.0' RT
-L- STA 33+98.00, 1.0' RT
- 2A QUANTITY = 1386 SQ FT
TEMPORARY WALL
-L- STA 35+53.00, 4.7' LT
-L- STA 36+30.00, 4.7' LT
- 2B QUANTITY = 1360 SQ FT
TEMPORARY SHORING
-L- STA 35+50.00, 1.0' RT
-L- STA 36+18.00, 1.0' RT



APPROVED: *Jeffrey A. Kowitz*
DATE: 2/15/2023

SEAL

DOCUMENT NOT CONSIDERED FINAL
UNLESS ALL SIGNATURES COMPLETED



PHASE I DETAILS
SR 2817

WORK ZONE TRAFFIC CONTROL

2/15/2023 BR0041.TC_TMP_04_Phi sh3.dgn jon_ar_chambault