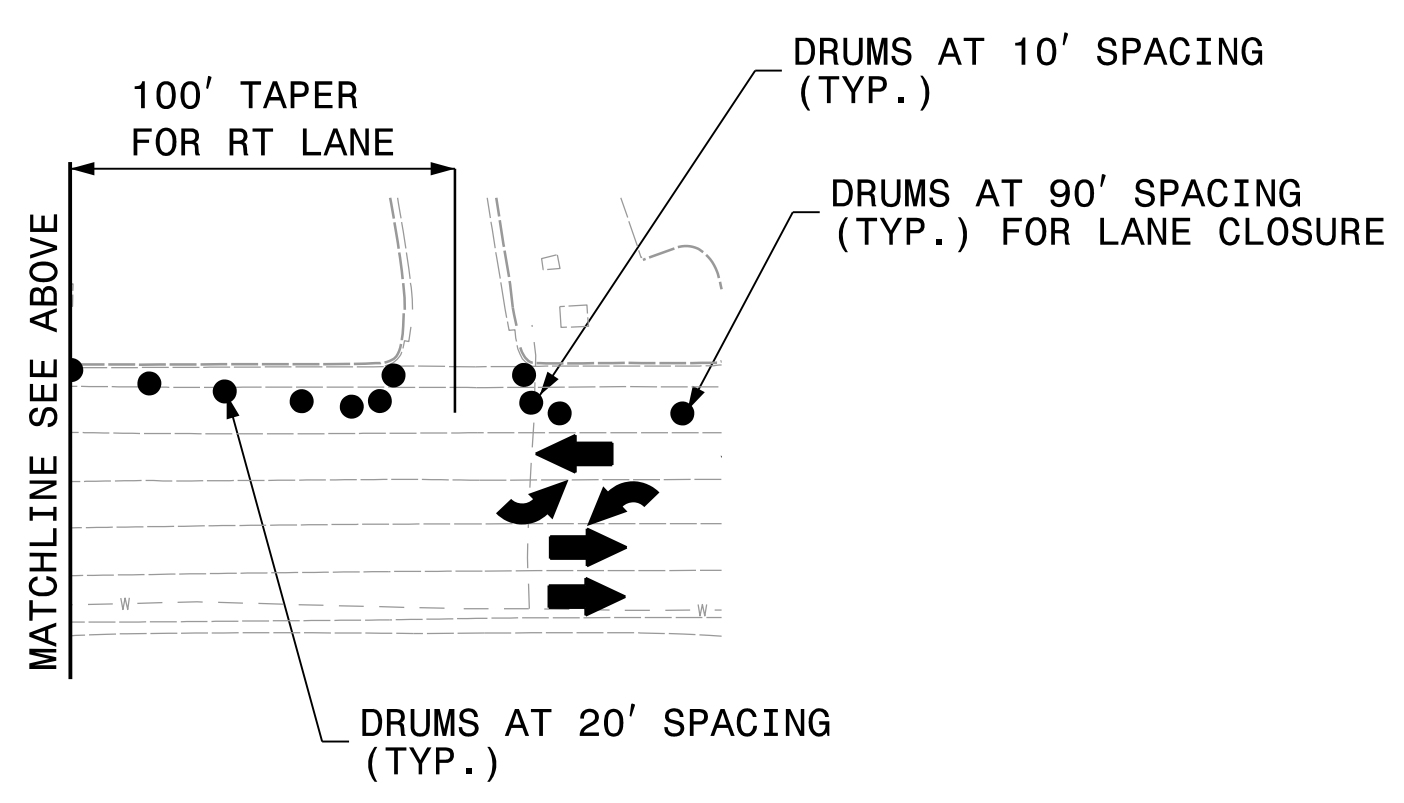
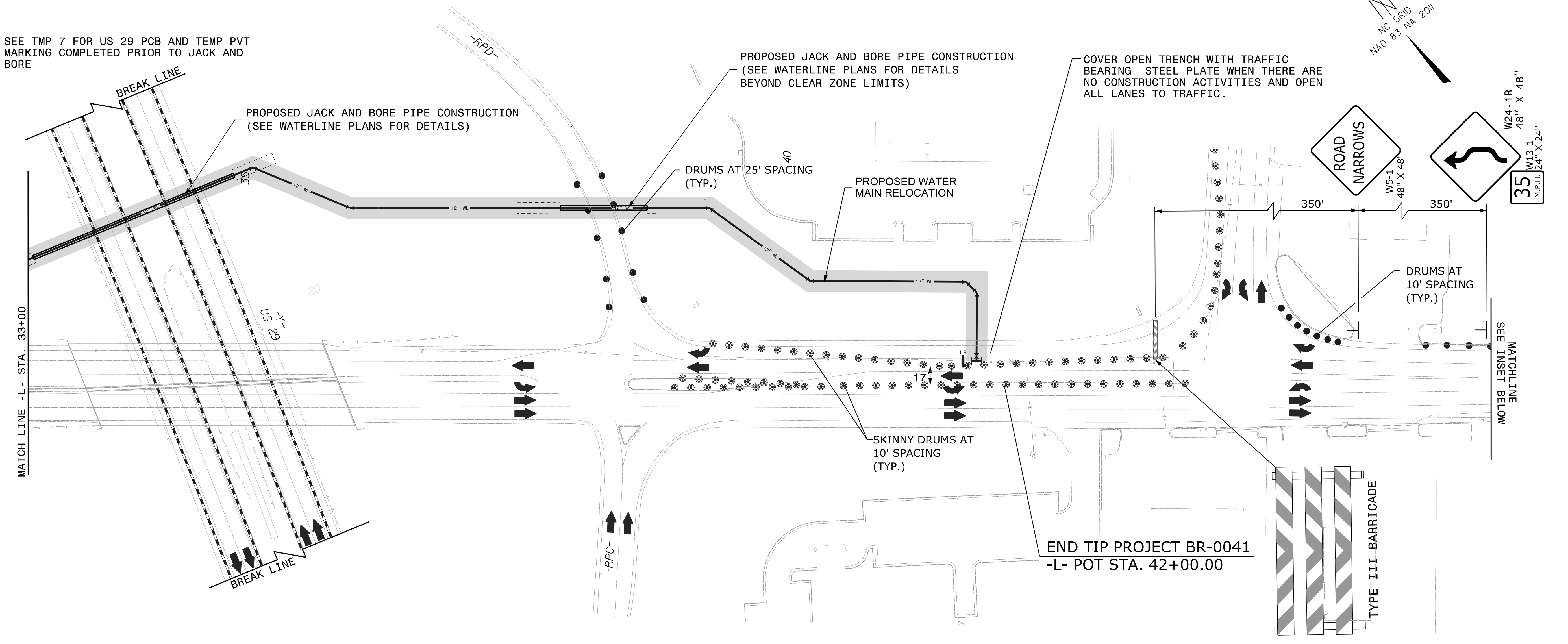


TEMPORARY TRAFFIC PATTERN SHOWN IS SUBJECT TO THE LANE CLOSURE TIME RESTRICTIONS DEFINED IN THE GENERAL NOTES.

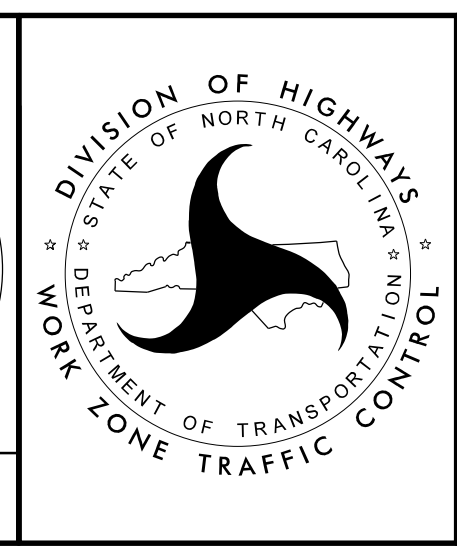
SEE TMP-7 FOR US 29 PCB AND TEMP PVT MARKING COMPLETED PRIOR TO JACK AND BORE



APPROVED: *Jeffrey A. Kodyntz*
 DATE: 2/15/2023

SEAL

DOCUMENT NOT CONSIDERED FINAL UNLESS ALL SIGNATURES COMPLETED



PHASE I DETAILS
WATER MAIN
RELOCATION

2/15/2023
 BR0041.TC_TMP_04_P1a_sh3.dgn
 jon_ar_chambault