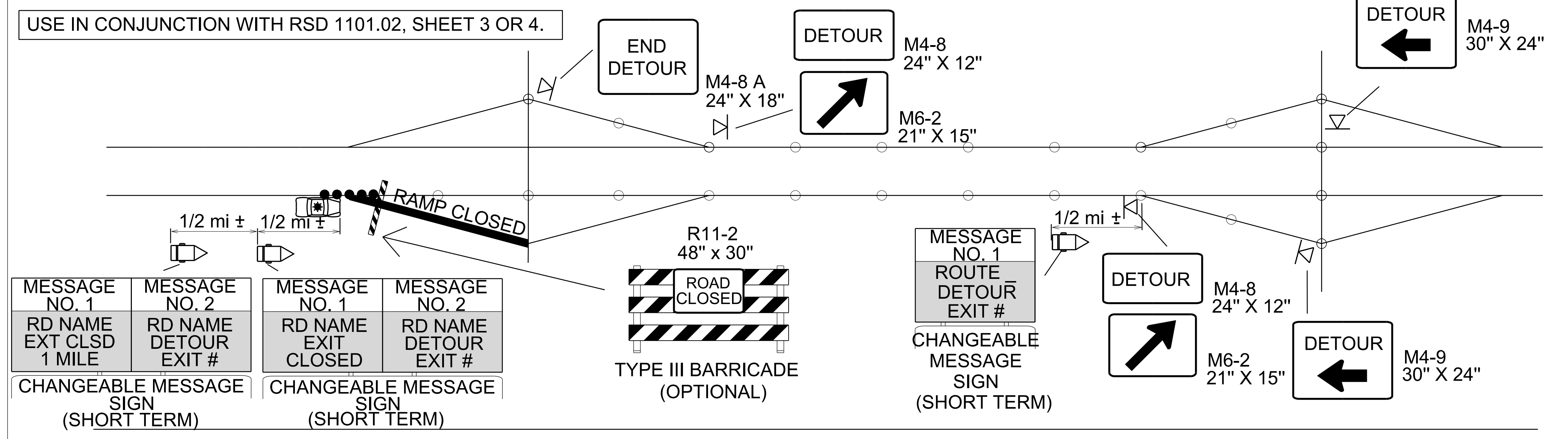
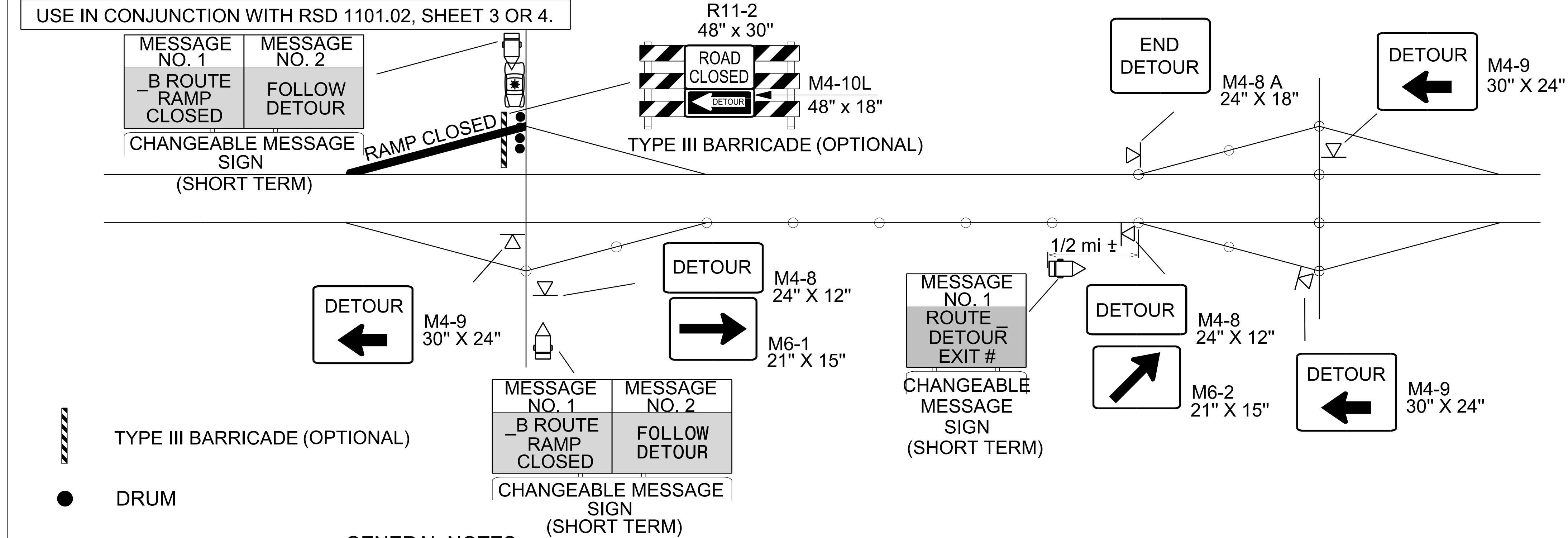


TYPICAL RAMP DETOURS

SHORT TERM CLOSURE AND DETOUR OF OFF-RAMP TO ADJACENT INTERCHANGE



SHORT TERM CLOSURE AND DETOUR OF ON-RAMP TO ADJACENT INTERCHANGE



GENERAL NOTES

1. THIS DRAWING IS INTENDED FOR USE DURING SHORT TERM CLOSURES OF INTERSTATE AND FREEWAY RAMPS.
2. RAMP CLOSURES SHALL BE APPROVED BY THE ENGINEER.
3. IF RAMP CLOSURE RESTRICTIONS APPLY, SEE SPECIAL PROVISION, "INTERMEDIATE CONTRACT TIMES AND LIQUIDATED DAMAGES".

2/15/2023
U5750_TC_TMP_02E_RampDetour.dgn
jon.ar.chambault

AECOM
 NC Firm License No.: F-0342
 5438 Wade Park Boulevard
 Suite 200 Raleigh, NC 27607
 Phone: 919-461-1100

APPROVED: *Jeffrey A. Koenig*
 DATE: 2/15/2023

SEAL

DOCUMENT NOT CONSIDERED FINAL
UNLESS ALL SIGNATURES COMPLETED

DIVISION OF HIGHWAYS
 NORTH CAROLINA
 DEPARTMENT OF TRANSPORTATION
 WORK ZONE TRAFFIC CONTROL

**RAMP & LOOP
 CLOSURE
 DETOUR DETAIL**