
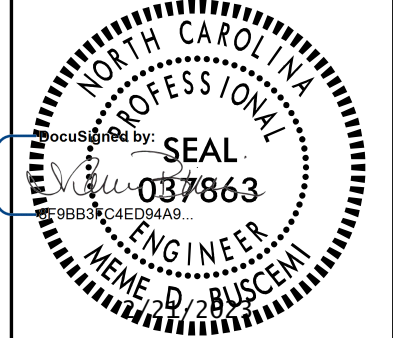
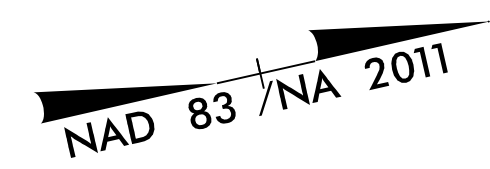


5/14/99

PROJECT REFERENCE NO. BR-0041		SHEET NO. 6	
ROADWAY DESIGN ENGINEER		HYDRAULICS ENGINEER	
			
Prepared in the Office of: AECOM			
<small>NC FIRM LICENSE Nos F-0342 5438 Wade Park Boulevard, Suite 200 Raleigh, NC 27607 (919) 854-6200 • (919) 854-6299 FAX1</small>			
DOCUMENT NOT CONSIDERED FINAL UNLESS ALL SIGNATURES COMPLETED			

NOTE: STRUCTURES 0601 AND 0604 ARE 4GI



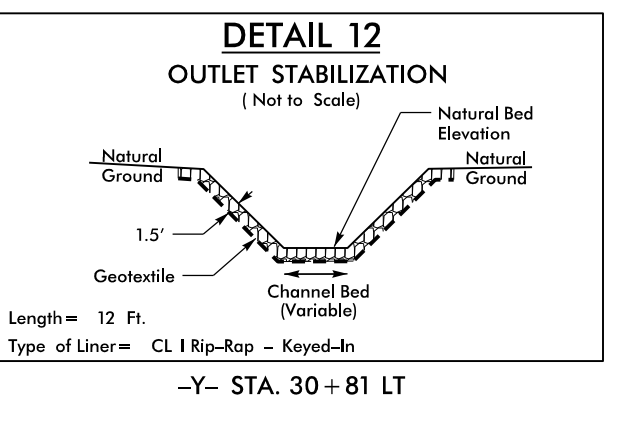
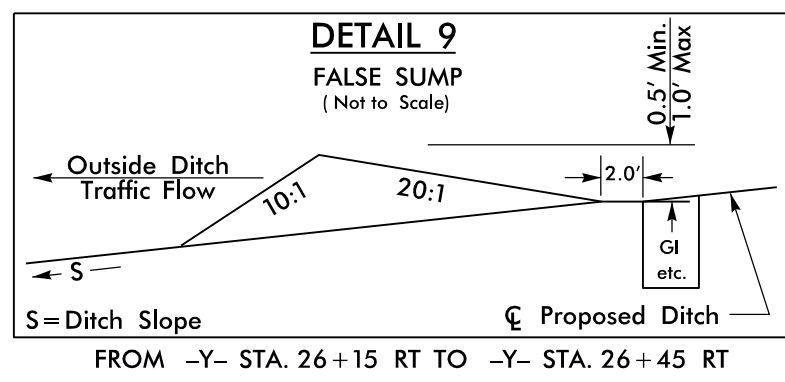
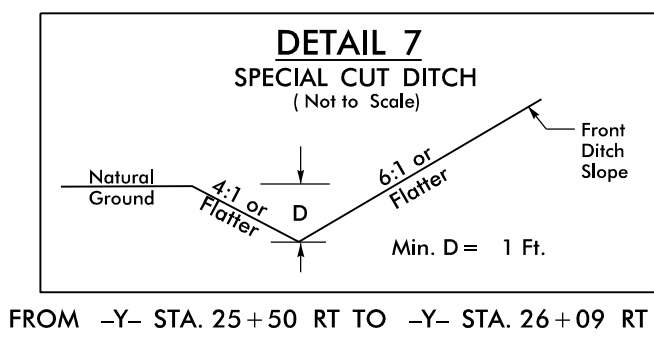
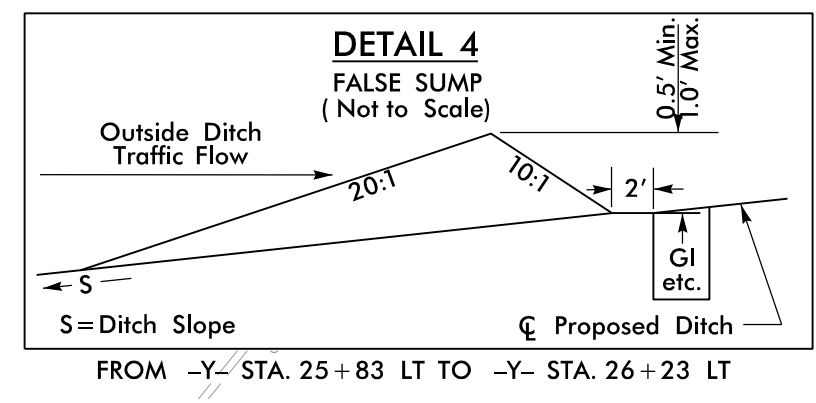
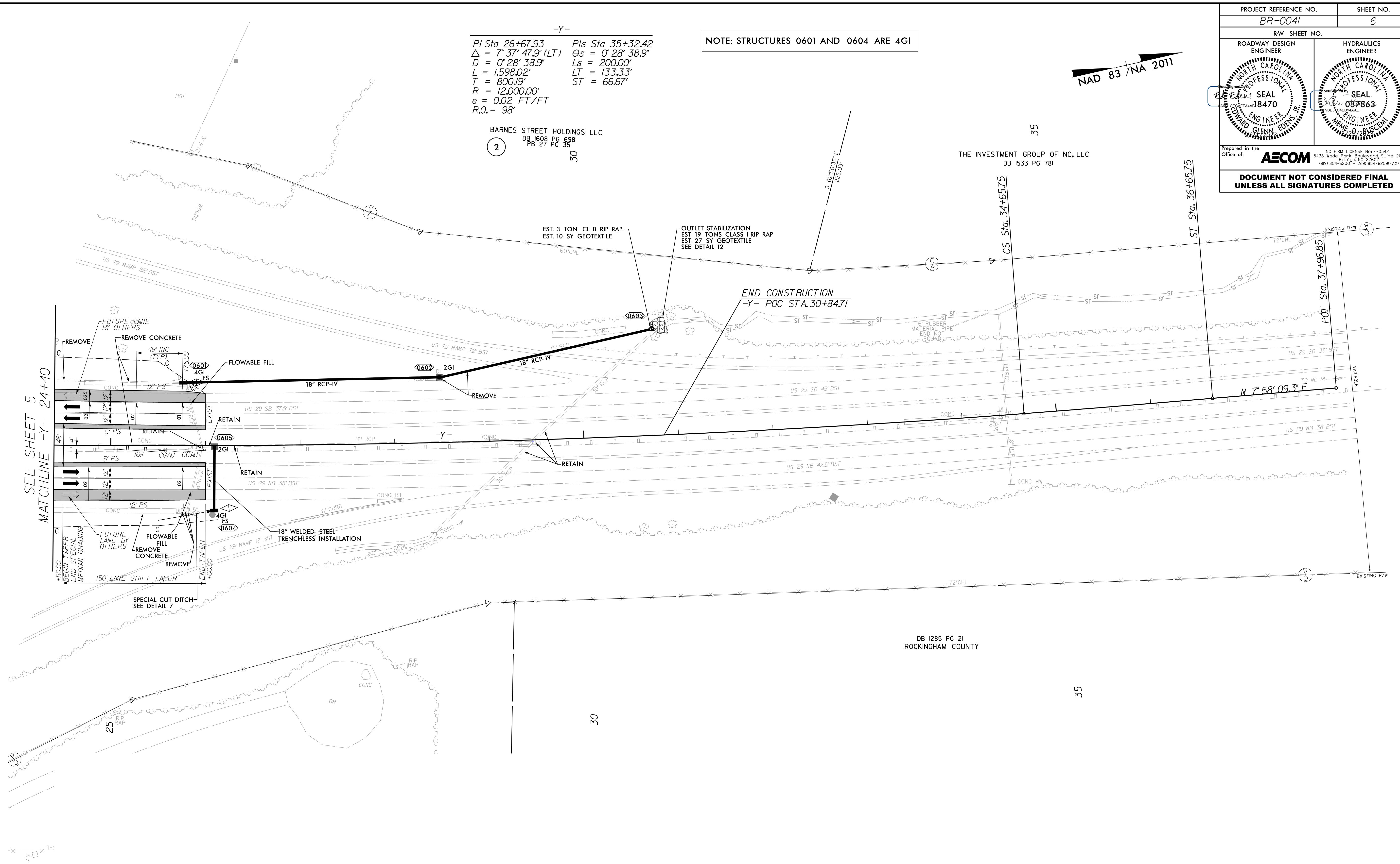
-Y-

$PI Sta\ 26+67.93$	$PIs\ Sta\ 35+32.42$
$\Delta = 7^{\circ}37'47.9\" (LT)$	$\Theta s = 0^{\circ}28'38.9\"$
$D = 0^{\circ}28'38.9\"$	$Ls = 200.00'$
$L = 1,598.02'$	$LT = 133.33'$
$T = 800.19'$	$ST = 66.67'$
$R = 12,000.00'$	
$e = 0.02\ FT/FT$	
$R.O. = 98'$	

BARNES STREET HOLDINGS LLC
DB 1608 PG 698
PB 27 PG 35

THE INVESTMENT GROUP OF NC, LLC
DB 1533 PG 781

REVISIONS



DB 1285 PG 21
ROCKINGHAM COUNTY

35

30

35

30