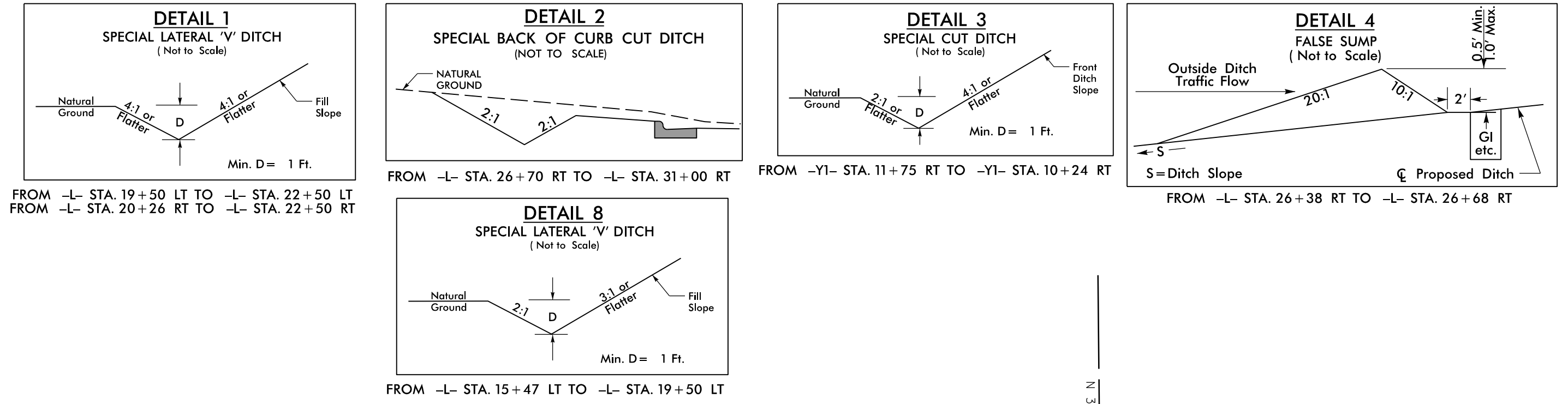
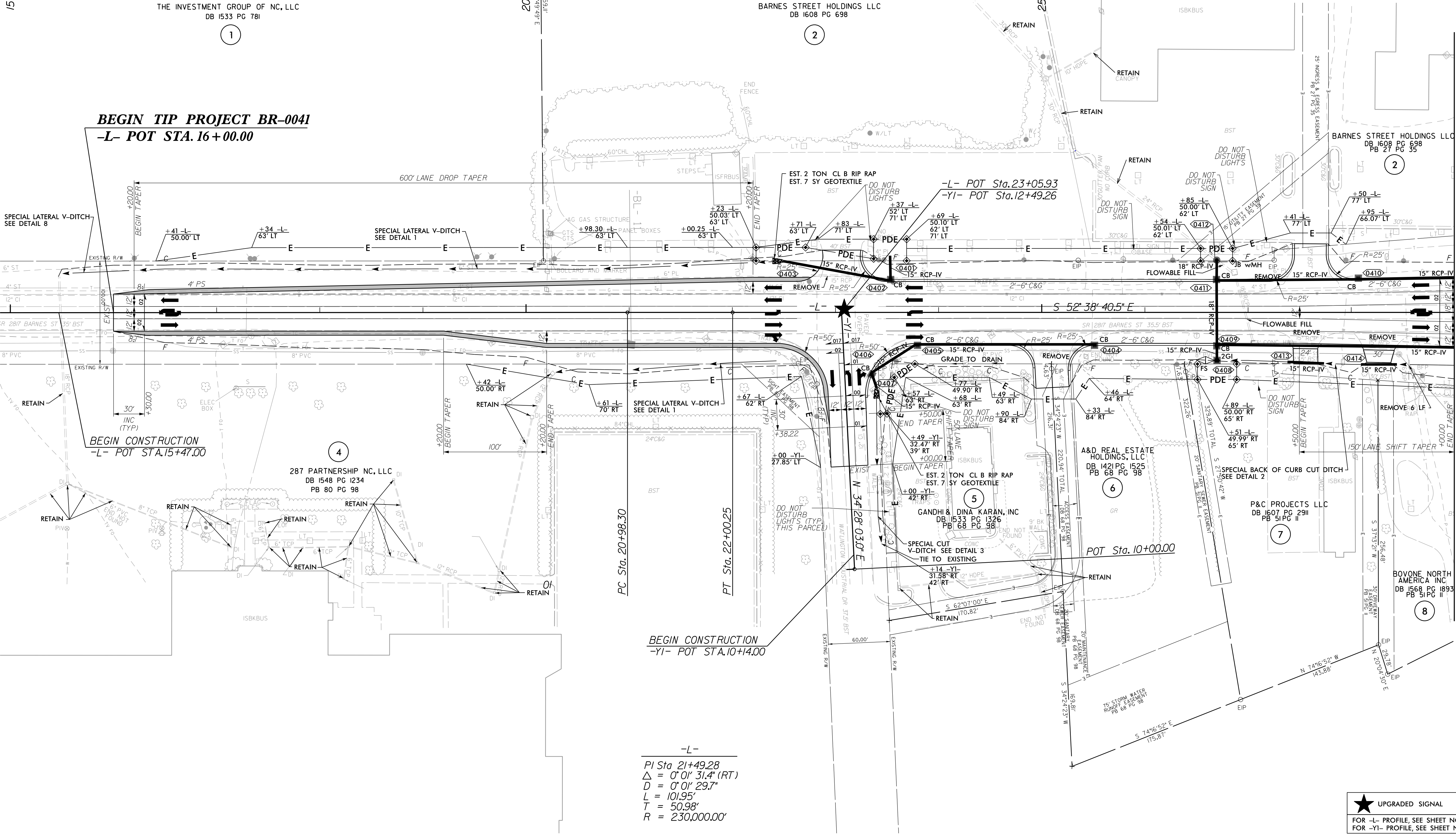
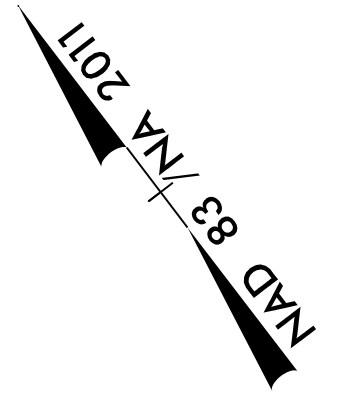


PROJECT REFERENCE NO. <i>BR-0041</i>		SHEET NO. <i>4</i>	
RW SHEET NO.		HYDRAULICS ENGINEER	
ROADWAY DESIGN ENGINEER		SEAL 18470	
SEAL 18470		SEAL 037863	
NORTH CAROLINA PROFESSIONAL ENGINEER		NORTH CAROLINA PROFESSIONAL ENGINEER	
WARD GLENN EDELS, JR.		D. BUSCEMI	
Prepared in the Office of: <b>AECOM</b> NC FIRM LICENSE No. F-0342 5438 Wade Park Boulevard, Suite 200 Raleigh, NC 27607 (919) 854-6200 • (919) 854-6259 FAX1			
<b>DOCUMENT NOT CONSIDERED FINAL UNLESS ALL SIGNATURES COMPLETED</b>			



NOTE: STRUCTURE 0412 TO BE CONSTRUCTED ON EXISTING PIPE



15

THE INVESTMENT GROUP OF NC, LLC  
DB 1533 PG 781

BARNES STREET HOLDINGS LLC  
DB 1608 PG 698

BARNES STREET HOLDINGS LLC  
DB 1608 PG 698  
PB 21 PG 35

287 PARTNERSHIP NC, LLC  
DB 1548 PG 1234  
PB 80 PG 98

GANDHI & DINA KARAN, INC  
DB 1533 PG 1326  
PB 68 PG 98

P&C PROJECTS LLC  
DB 1607 PG 2911  
PB 51 PG 11

BOVONE NORTH AMERICA INC  
DB 1568 PG 1893  
PB 51 PG 11

-L-  
 PI Sta. 21+49.28  
 $\Delta = 0' 01' 31.4''$  (RT)  
 $D = 0' 01' 29.7''$   
 $L = 101.95'$   
 $T = 50.98'$   
 $R = 230,000.00'$

★ UPGRADED SIGNAL  
 FOR -L- PROFILE, SEE SHEET NO. 7  
 FOR -YI- PROFILE, SEE SHEET NO. 10

REVISIONS

MATCHLINE -L- 29+00  
SEE SHEET 5