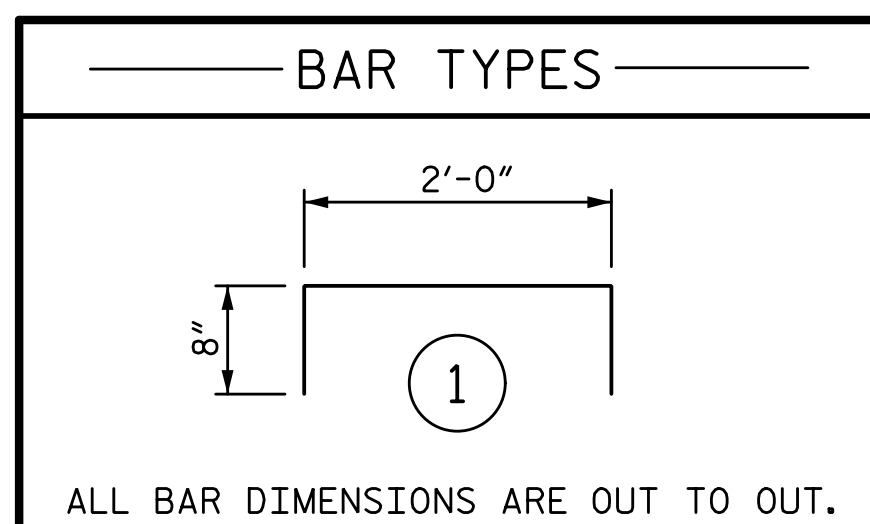
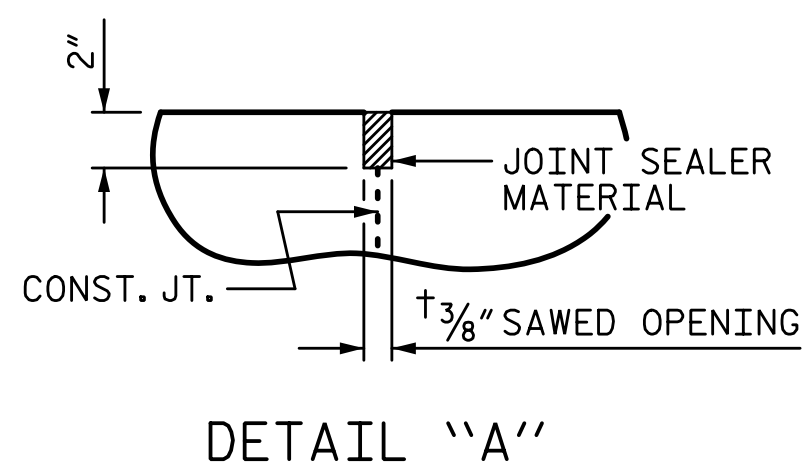


2/7/2023 11:20:09 AM P:\Raleigh\Projects\2018\Division 7 (SEA)\17BP7R142 Gullford 225 (Rehobeth Ch Rd over I-85 Bus)\Structures\Drawings\Final\17BP7R142_SML_AS_400225.dgn



SPLICE CHART		
BAR SIZE	EPOXY COATED	UNCOATED
#4	1'-11"	1'-7"
#5	2'-5"	2'-0"
#6	3'-7"	2'-5"

NOTES:

APPROACH SLAB IN EACH STAGE SHALL NOT BE CONSTRUCTED PRIOR TO COMPLETION OF THE BRIDGE DECK.

FOR BRIDGE APPROACH FILL INCLUDING GEOTEXTILE, AND SELECT MATERIAL, SEE ROADWAY PLANS.

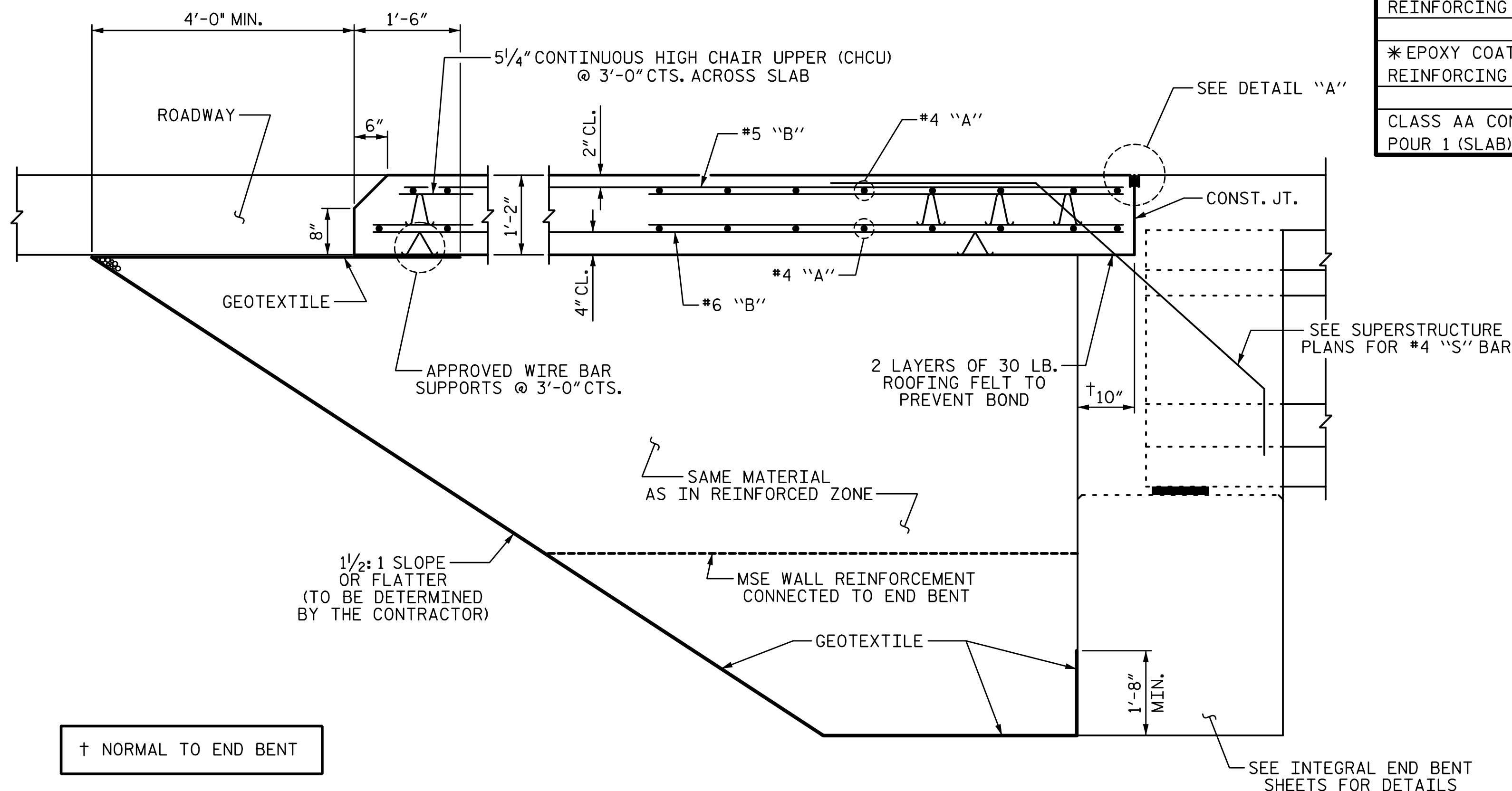
GEOTEXTILE SHALL BE TYPE 1 IN ACCORDANCE WITH THE STANDARD SPECIFICATIONS SECTION 1056.

SEE MSE WALL NOTES FOR MORE INFORMATION ABOUT MSE BACKWALL MATERIAL.

SELECT MATERIAL BACKFILL IS TO BE CONTINUOUS ALONG FILL FACE OF BACKWALL FROM OUTSIDE EDGE TO OUTSIDE EDGE OF APPROACH SLAB FOR EACH STAGE.

AREA BETWEEN THE WINGWALL AND APPROACH SLAB SHALL BE GRADED TO DRAIN THE WATER AWAY FROM THE FILL FACE OF THE BRIDGE AND SHALL BE PAVED. SEE ROADWAY PLANS.

THE JOINT OPENING AT THE APPROACH SLAB/DECK INTERFACE SHALL BE SAWED NO MORE THAN 12 HOURS AFTER THE APPROACH SLAB IS CAST. THE JOINT SHALL BE CLEANED OF ALL DEBRIS BEFORE THE SEALANT IS APPLIED. THE JOINT SEALER MATERIAL SHALL CONFORM TO THE REQUIREMENTS OF SECTION 1028-3 OF THE STANDARD SPECIFICATIONS.



BILL OF MATERIAL FOR ONE APPROACH SLAB @ END BENT 1 (STAGE 1)					
BAR	NO.	SIZE	TYPE	LENGTH	WEIGHT
* A101	26	#4	STR	39'-1"	679
A102	26	#4	STR	39'-1"	679
* B101	75	#5	STR	24'-1"	1884
B102	75	#6	STR	24'-7"	2769
* D1	25	#6	STR	6'-0"	225

REINFORCING STEEL	3448 LB
* EPOXY COATED REINFORCING STEEL	2788 LB
CLASS AA CONCRETE BREAKDOWN POUR 1 (SLAB)	40.4 CY

BILL OF MATERIAL FOR ONE APPROACH SLAB @ END BENT 1 (STAGE 2)					
BAR	NO.	SIZE	TYPE	LENGTH	WEIGHT
* A201	52	#4	STR	23'-3"	808
A202	52	#4	STR	23'-0"	799
* B201	85	#5	STR	24'-1"	2135
B202	85	#6	STR	24'-7"	3139
* B203	4	#4	STR	24'-7"	66
* G1	25	#4	STR	5'-2"	86
* U1	8	#4	1	3'-4"	18

REINFORCING STEEL	3938 LB
* EPOXY COATED REINFORCING STEEL	3113 LB
CLASS AA CONCRETE BREAKDOWN POUR 1 (SLAB)	45.7 CY
POUR 2 (SIDEWALK)	2.5 CY
TOTAL	48.2 CY

BILL OF MATERIAL FOR TWO SIDEWALKS (STAGE 3)					
BAR	NO.	SIZE	TYPE	LENGTH	WEIGHT
* B301	8	#4	STR	24'-7"	131
* G1	50	#4	STR	5'-2"	173
* G2	8	#4	STR	5'-2"	28
* U2	32	#4	STR	9"	16

* EPOXY COATED REINFORCING STEEL	348 LB
CLASS AA CONCRETE BREAKDOWN SIDEWALK	6.2 CY

BILL OF MATERIAL FOR ONE APPROACH SLAB @ END BENT 2 (STAGE 1)					
BAR	NO.	SIZE	TYPE	LENGTH	WEIGHT
* A103	26	#4	STR	38'-3"	664
A104	26	#4	STR	38'-3"	664
* B101	75	#5	STR	24'-1"	1884
B102	75	#6	STR	24'-7"	2769
* D1	25	#6	STR	6'-0"	225

REINFORCING STEEL	3433 LB
* EPOXY COATED REINFORCING STEEL	2773 LB
CLASS AA CONCRETE BREAKDOWN POUR 1 (SLAB)	40.4 CY

BILL OF MATERIAL FOR ONE APPROACH SLAB @ END BENT 2 (STAGE 2)					
BAR	NO.	SIZE	TYPE	LENGTH	WEIGHT
* A203	52	#4	STR	22'-8"	787
A204	52	#4	STR	22'-6"	782
* B201	85	#5	STR	24'-1"	2135
B202	85	#6	STR	24'-7"	3139
* B203	4	#4	STR	24'-7"	66
* G1	25	#4	STR	5'-2"	86
* U1	8	#4	1	3'-4"	18

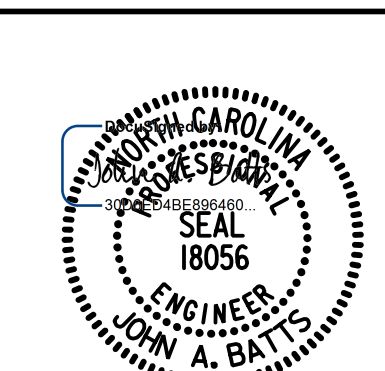
REINFORCING STEEL	3921 LB
* EPOXY COATED REINFORCING STEEL	3092 LB
CLASS AA CONCRETE BREAKDOWN POUR 1 (SLAB)	45.7 CY
POUR 2 (SIDEWALK)	2.5 CY
TOTAL	48.2 CY

PROJECT NO. BP7.R006.3
GUILFORD COUNTY
 STATION: 18+82.09 -L-

SHEET 3 OF 4

STATE OF NORTH CAROLINA
 DEPARTMENT OF TRANSPORTATION
 RALEIGH

BRIDGE APPROACH SLAB FOR INTEGRAL END BENT



DRAWN BY: S.D. COOPER	DATE: 2-22
CHECKED BY: J.A. BATTS	DATE: 2-22
DESIGN ENGINEER OF RECORD: J.A. BATTS	DATE: 2-22

REVISIONS				SHEET NO.	
NO.	BY:	DATE:	NO.	BY:	DATE:
1			3		
2			4		

DOCUMENT NOT CONSIDERED FINAL UNLESS ALL SIGNATURES COMPLETED

TOTAL SHEETS 58