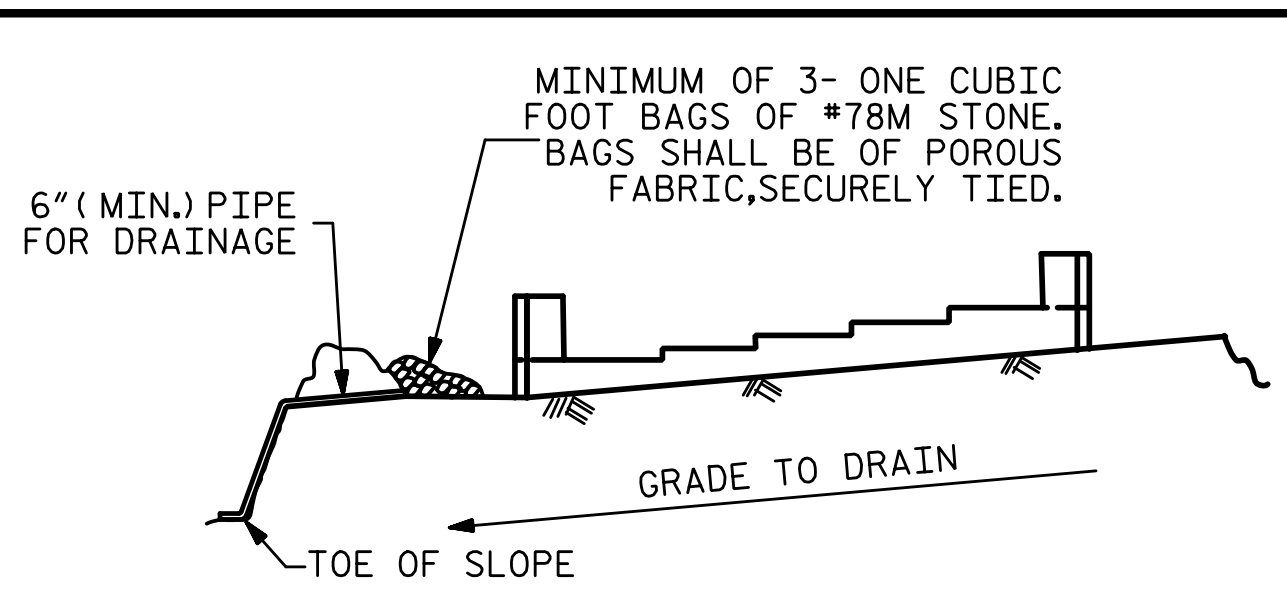


2/7/2023 11:20:06 AM P:\Raleigh\Projects\2018\Division 7 (SEA)\17BP7R142 Guilford 225 (Rehobeth Ch Rd over I-85 Bus)\Structures\Drawings\Final\17BP7R142_SMJ_E2_400225.dgn



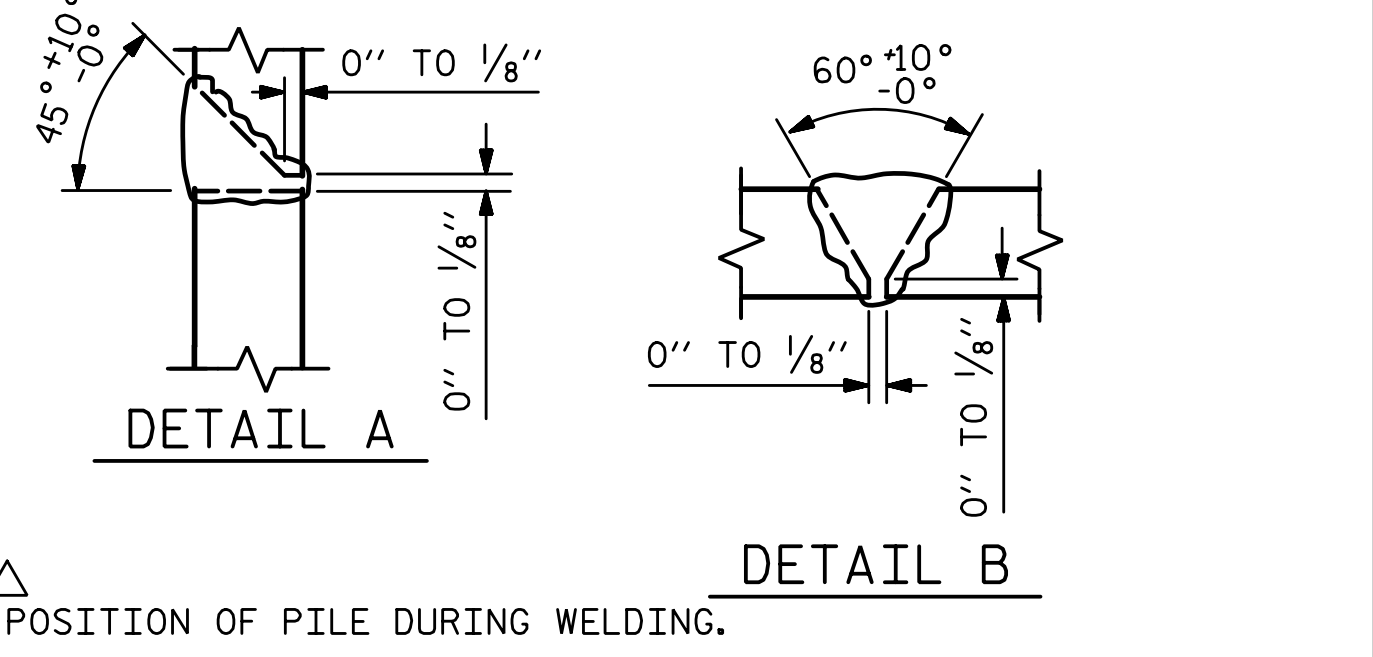
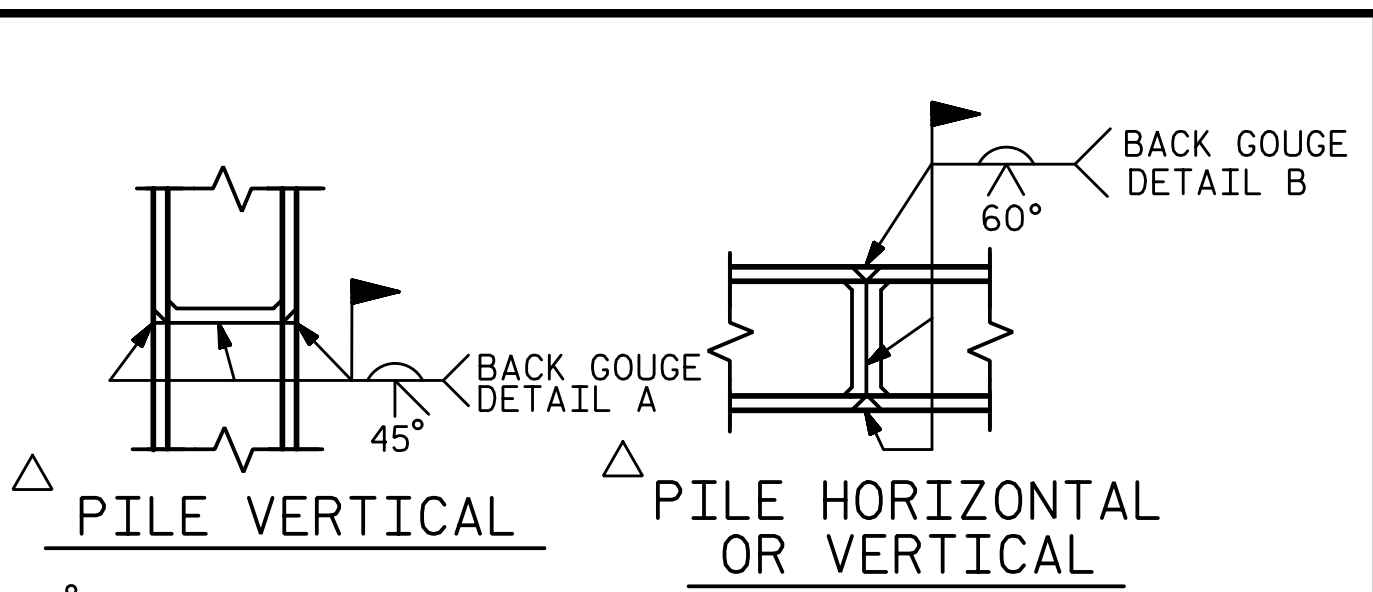
MINIMUM OF 3- ONE CUBIC FOOT BAGS OF #78M STONE. BAGS SHALL BE OF POROUS FABRIC, SECURELY TIED.

BAGGED STONE AND PIPE SHALL BE PLACED IMMEDIATELY AFTER COMPLETION OF END BENT EXCAVATION. PIPE MAY BE EITHER CONCRETE, CORRUGATED STEEL, CORRUGATED ALUMINUM ALLOY, OR CORRUGATED PLASTIC. PERFORATED PIPE WILL NOT BE ALLOWED.

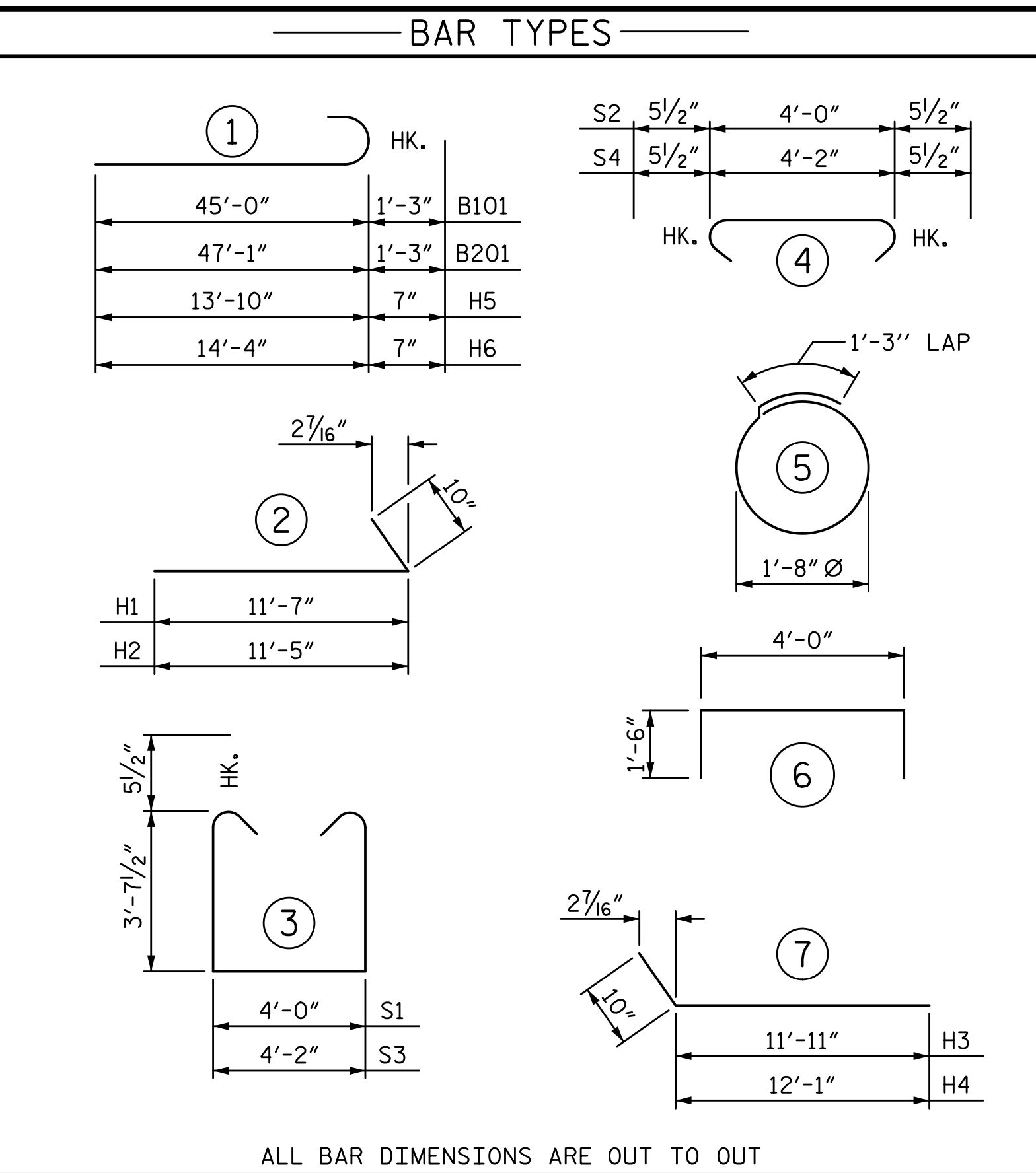
BAGGED STONE SHALL REMAIN IN PLACE UNTIL THE ENGINEER DIRECTS THAT IT BE REMOVED. THE CONTRACTOR SHALL REMOVE AND DISPOSE OF SILT ACCUMULATIONS AT BAGGED STONE WHEN SO DIRECTED BY THE ENGINEER. BAGS SHALL BE REMOVED AND REPLACED WHENEVER THE ENGINEER DETERMINES THAT THEY HAVE DETERIORATED AND LOST THEIR EFFECTIVENESS.

NO SEPARATE PAYMENT WILL BE MADE FOR THIS WORK AND THE ENTIRE COST OF THIS WORK SHALL BE INCLUDED IN THE UNIT CONTRACT PRICE BID FOR THE SEVERAL PAY ITEMS.

TEMPORARY DRAINAGE AT END BENT

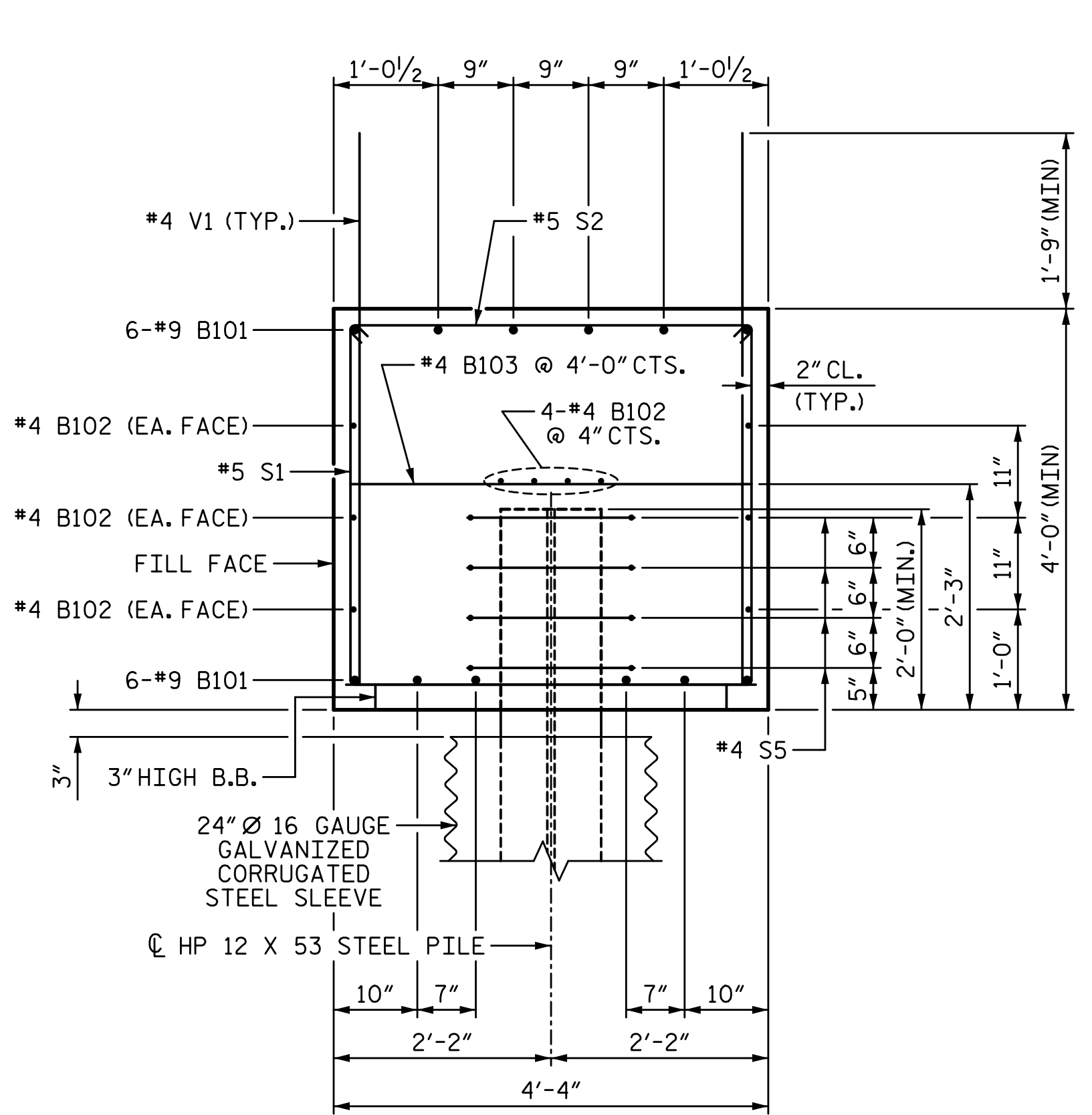


PILE SPLICE DETAILS

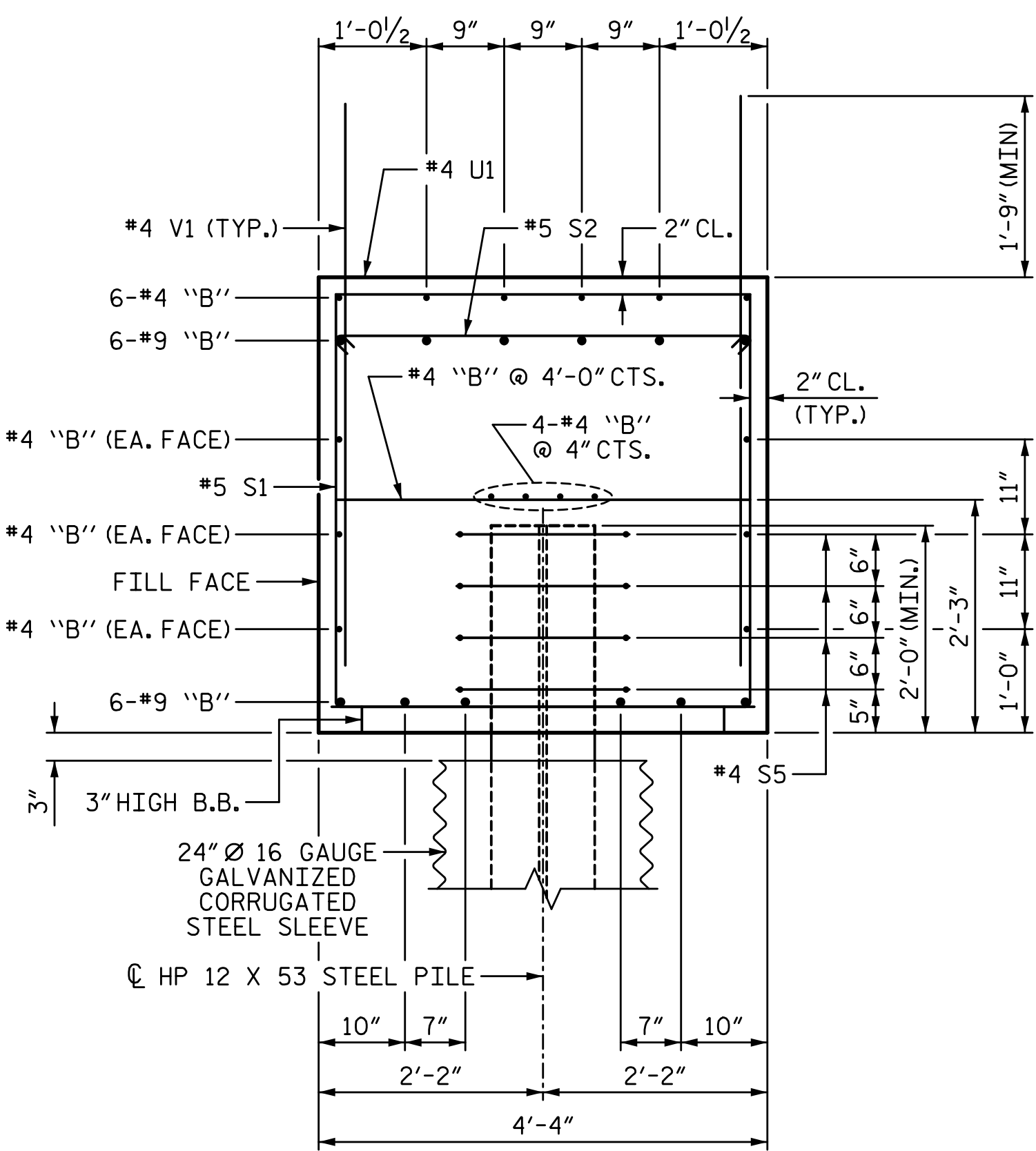


BILL OF MATERIAL STAGE 1					BILL OF MATERIAL STAGE 2						
BAR NO.	SIZE	TYPE	LENGTH	WEIGHT	BAR NO.	SIZE	TYPE	LENGTH	WEIGHT		
B101	12	#9	1	46'-3"	1887	B201	12	#9	1	48'-4"	1972
B102	20	#4	STR	24'-0"	321	B202	20	#4	STR	25'-3"	337
B103	11	#4	STR	4'-0"	29	B203	12	#4	STR	4'-0"	32
						B204	30	#4	STR	6'-5"	129
H1	15	#5	2	12'-5"	194	H3	15	#5	7	12'-9"	199
H2	15	#5	2	12'-3"	192	H4	15	#5	7	12'-11"	202
H5	20	#5	1	14'-5"	301	H6	20	#5	1	14'-11"	311
K1	30	#4	STR	4'-1"	82						
						K1	30	#4	STR	4'-1"	82
S1	50	#5	3	12'-2"	634	S1	49	#5	3	12'-2"	622
S2	50	#5	4	4'-11"	256	S2	49	#5	4	4'-11"	251
S3	1	#5	3	12'-4"	13	S3	5	#5	3	12'-4"	64
S4	1	#5	4	5'-1"	5	S4	5	#5	4	5'-1"	27
S5	32	#4	5	6'-6"	139	S5	32	#4	5	6'-6"	139
V1	62	#4	STR	5'-10"	242						
V2	36	#5	STR	10'-3"	385	U1	25	#4	6	7'-0"	117
						V1	74	#4	STR	5'-10"	288
						V3	36	#5	STR	10'-1"	379
TOTAL REINFORCING STEEL 4680 LB					TOTAL REINFORCING STEEL 5151 LB						
CLASS A CONCRETE BREAKDOWN					CLASS A CONCRETE BREAKDOWN						
POUR 1 (CAP & LOWER WINGS) 31.3 CY					POUR 3 (CAP & LOWER WINGS) 34.7 CY						
POUR 2 (UPPER WINGS) 3.4 CY					POUR 4 (UPPER WINGS) 3.5 CY						
TOTAL CLASS A CONCRETE 34.7 CY					TOTAL CLASS A CONCRETE 38.2 CY						

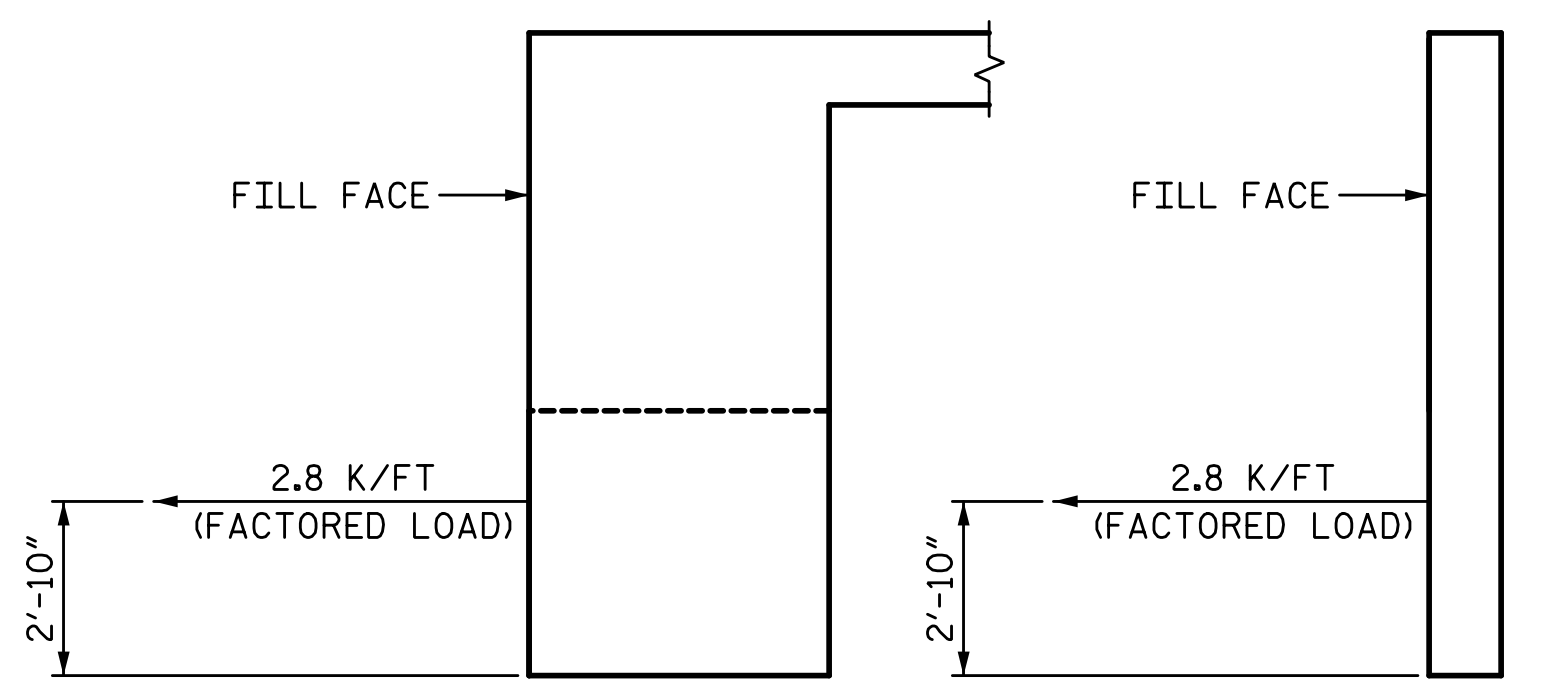
END BENT 2 TOTAL QUANTITIES		
	REINFORCING STEEL	CLASS A CONCRETE
	LB	CY
STAGE 1	4,680	34.7
STAGE 2	5,151	38.2
TOTAL	9,831	72.9



SECTION A-A



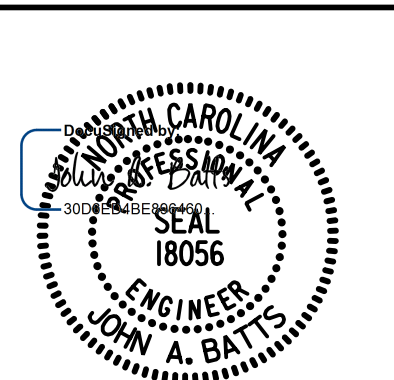
SECTION B-B



TIEBACK DETAILS

PROJECT NO. BP7.R006.3
GUILFORD COUNTY
 STATION: 18+82.09 -L-
 SHEET 4 OF 4

STATE OF NORTH CAROLINA
 DEPARTMENT OF TRANSPORTATION
 RALEIGH
 SUBSTRUCTURE
END BENT 2



W WGI
 5640 Dillard Drive, Suite 200
 Cary, NC 27518
 LICENSURE NO. C-4434

DRAWN BY: T. BANKOVICH DATE: 2-22
 CHECKED BY: J.A. BATTS DATE: 2-22
 DESIGN ENGINEER OF RECORD: J.A. BATTS DATE: 2-22

REVISIONS				SHEET NO.	
NO.	BY:	DATE:	NO.	BY:	DATE:
1			3		
2			4		

DOCUMENT NOT CONSIDERED FINAL UNLESS ALL SIGNATURES COMPLETED