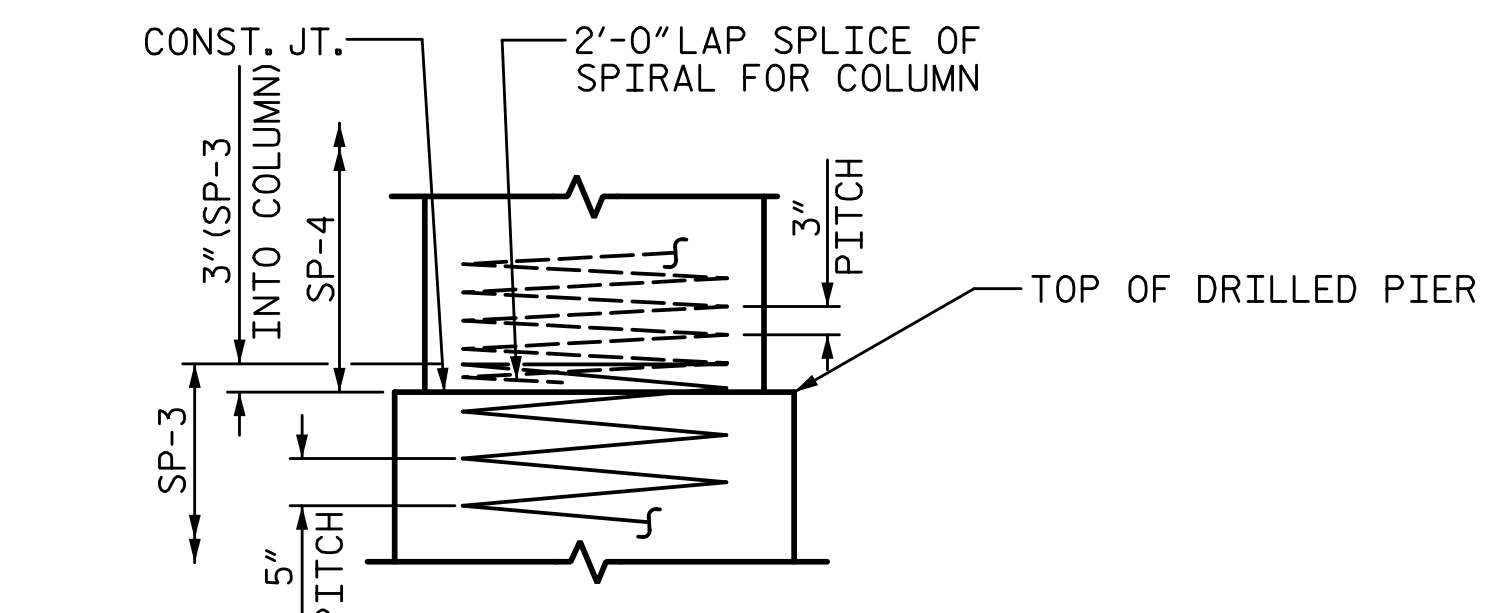
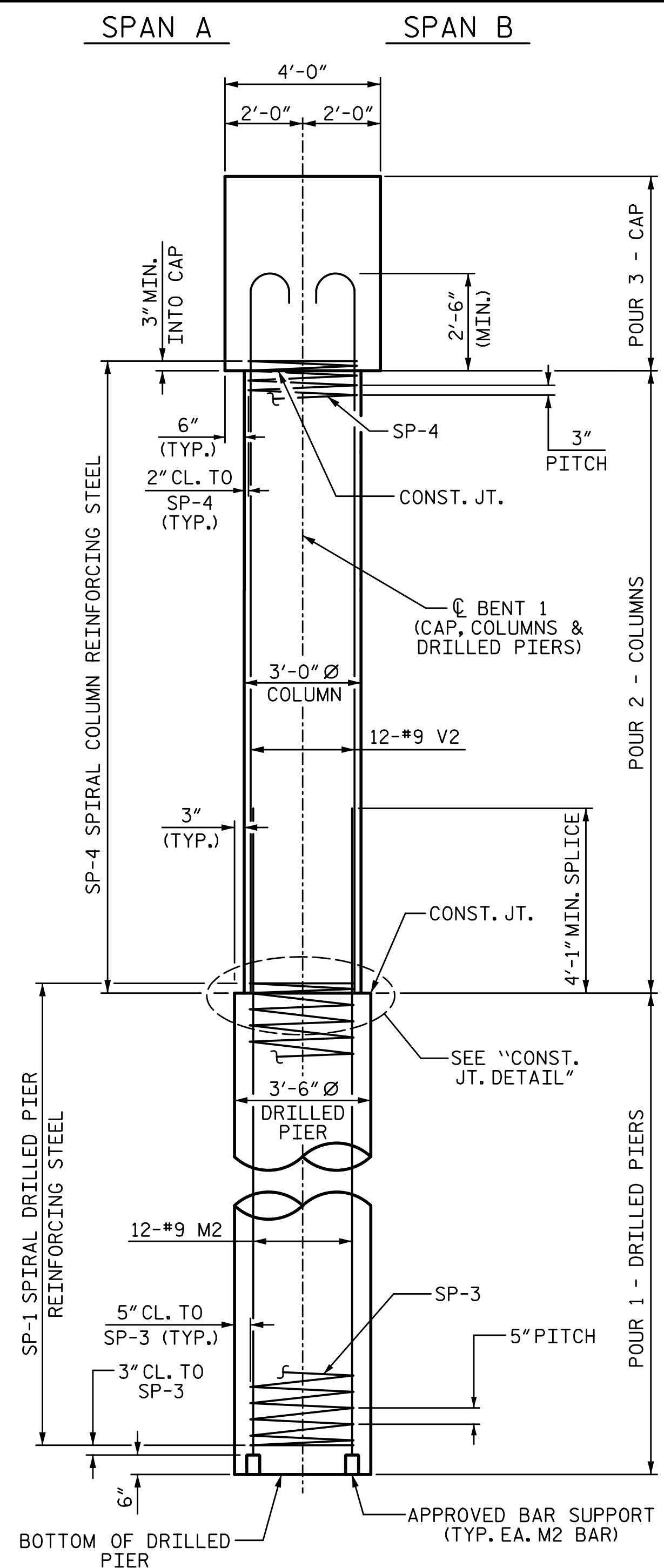
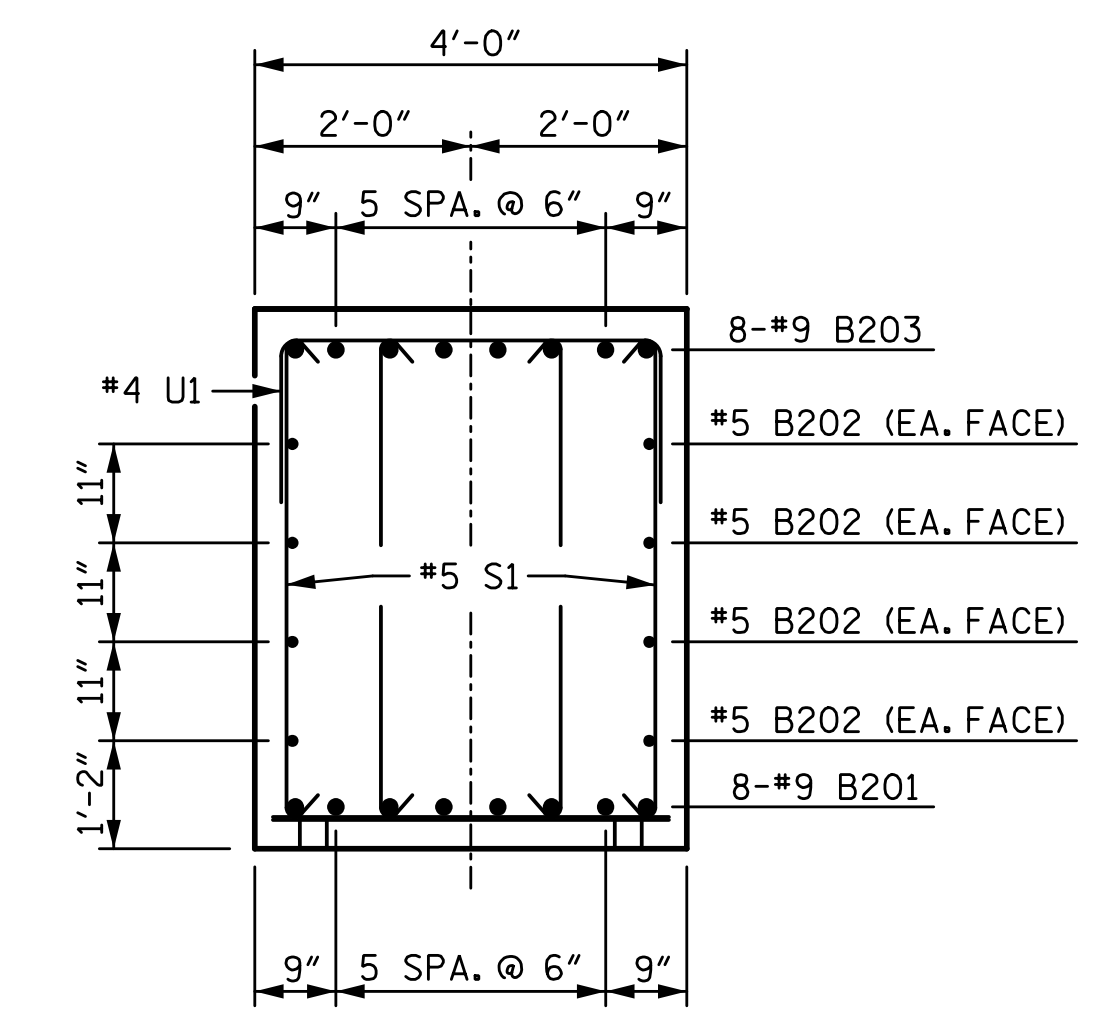


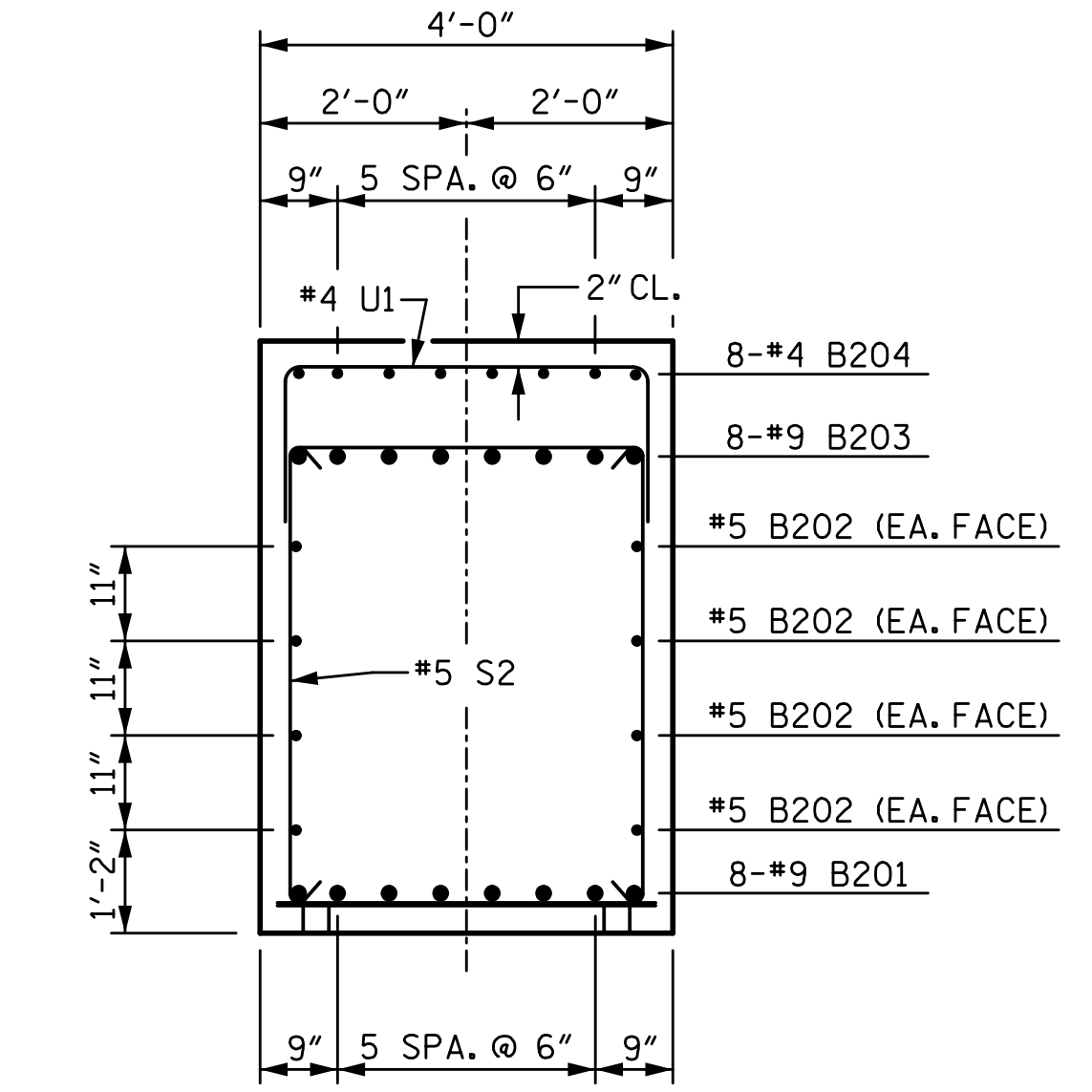
2/7/2023 11:20:03 AM P:\Raleigh\Projects\2018\Division 7 (SEAL)\17BP7R142 Guilford 225 (Rehobeth Ch Rd over I-85 Bus)\Structures\Drawings\Final\17BP7R142\_SMJ\_B1\_400225.dgn



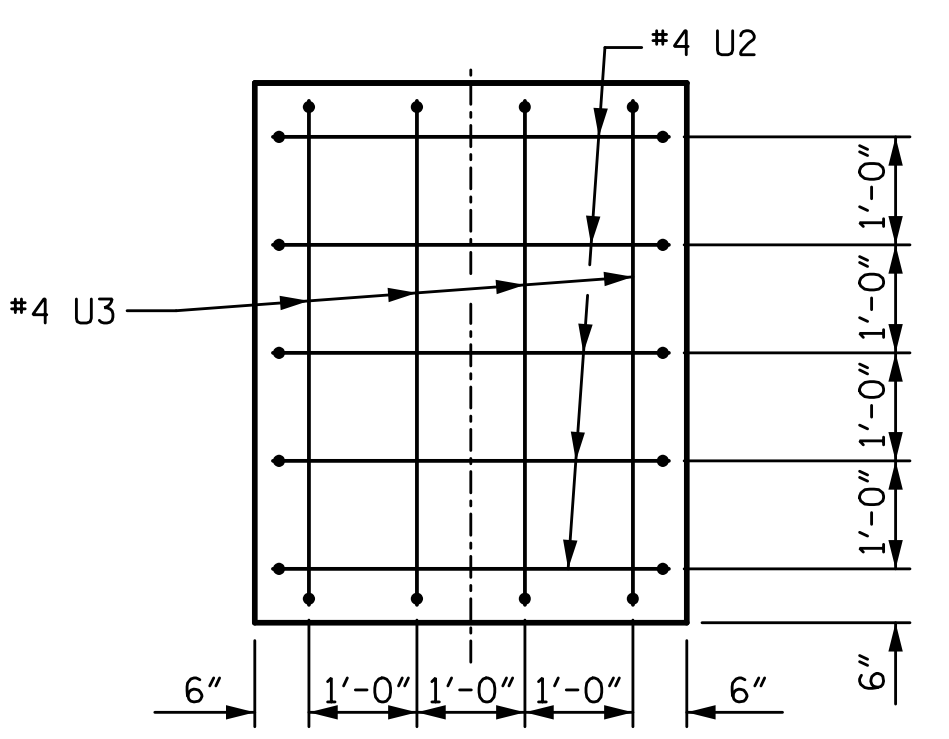
CONSTRUCTION JOINT DETAIL



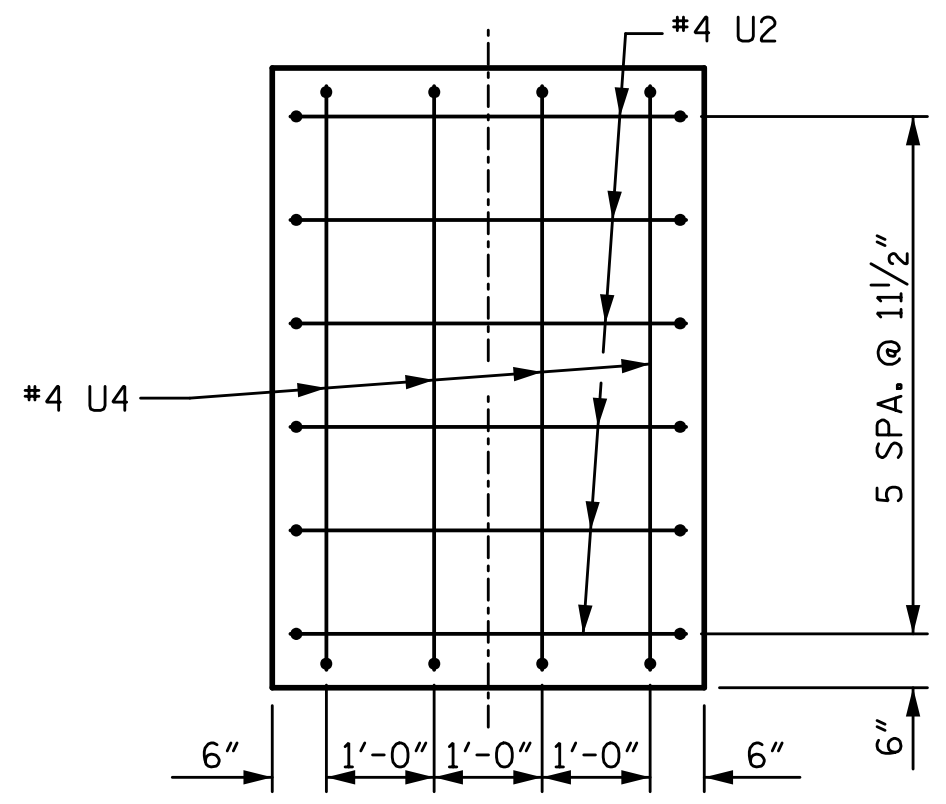
SECTION A-A



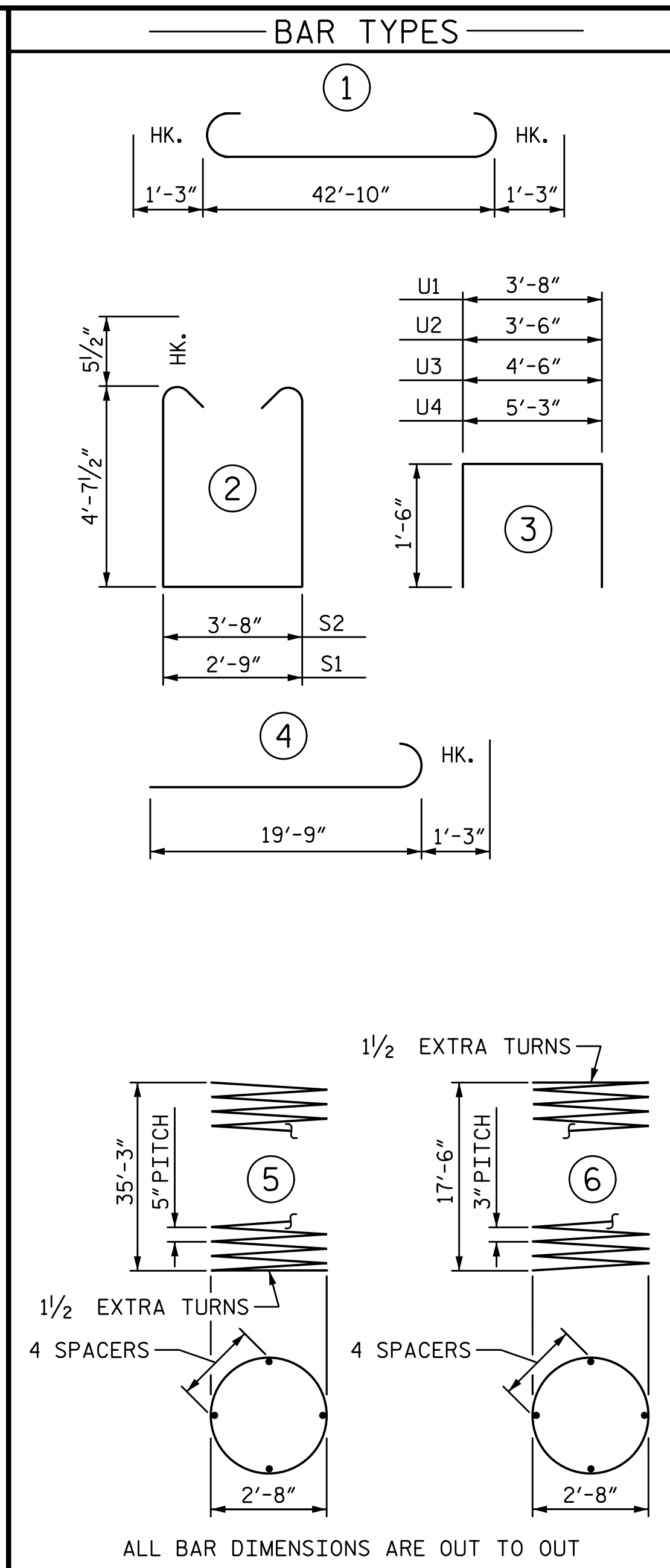
SECTION B-B



VIEW X-X



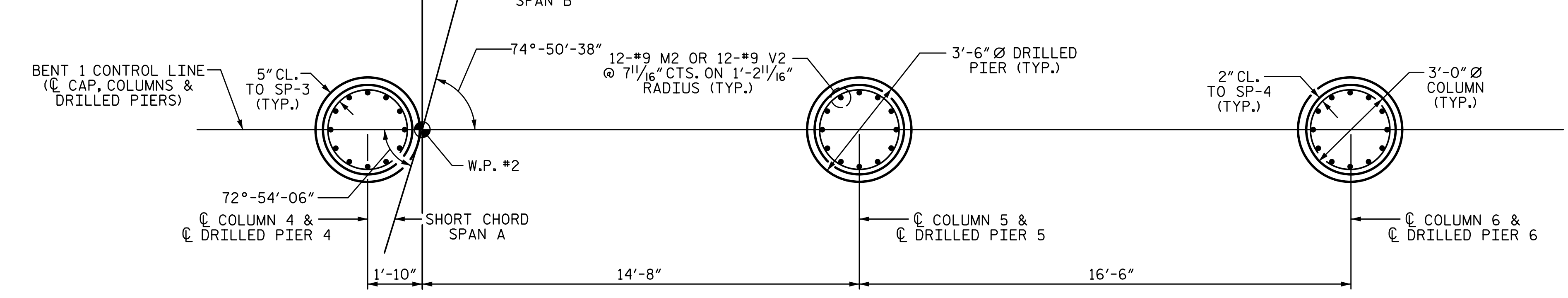
VIEW Y-Y



ALL BAR DIMENSIONS ARE OUT TO OUT  
 \*\* THE "SP-3" SPIRAL REINFORCING STEEL SHALL BE W31 OR D31 COLD DRAWN WIRE OR #5 PLAIN OR DEFORMED BAR.  
 \* THE "SP-4" SPIRAL REINFORCING STEEL SHALL BE W20 OR D20 COLD DRAWN WIRE OR #4 PLAIN OR DEFORMED BAR.

BILL OF MATERIAL					
BENT 1 (STAGE 2)					
BAR NO.	NO.	SIZE	TYPE	LENGTH	WEIGHT
B201	8	#9	STR	43'-0"	1170
B202	8	#5	STR	43'-0"	359
B203	8	#9	1	45'-4"	1233
B204	8	#4	STR	9'-8"	52
B205	8	#4	STR	13'-10"	74
M2	36	#9	STR	43'-0"	5263
S1	28	#5	2	12'-11"	377
S2	46	#5	2	13'-10"	664
U1	48	#4	3	6'-8"	214
U2	11	#4	3	6'-6"	48
U3	4	#4	3	7'-6"	20
U4	4	#4	3	8'-3"	22
V2	36	#9	4	21'-0"	2570
SP-3	3	**	5	715'-7"	2239
SP-4	3	*	6	594'-1"	1191
REINFORCING STEEL					12066 LB
SPIRAL COL. REINF. STEEL					3430 LB
CLASS "A" CONCRETE BREAKDOWN					
POUR 2 (COLUMNS)					13.6 CY
POUR 3 (CAP)					34.4 CY
TOTAL					48.0 CY

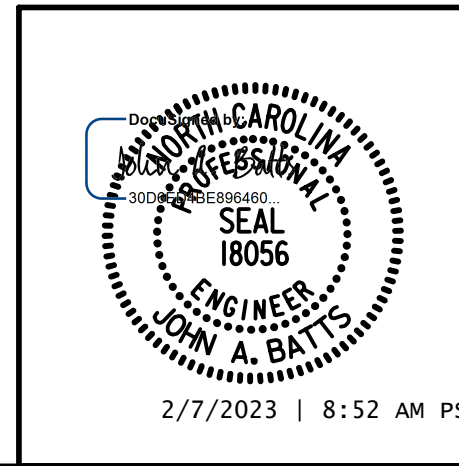
END ELEVATION



PLAN OF DRILLED PIERS AND COLUMNS

DRAWN BY: S.D. COOPER DATE: 2-22  
 CHECKED BY: J.A. BATTS DATE: 2-22  
 DESIGN ENGINEER OF RECORD: J.A. BATTS DATE: 2-22

PROJECT NO. BP7.R006.3  
GUILFORD COUNTY  
 STATION: 18+82.09 -L-  
 SHEET 4 OF 4



STATE OF NORTH CAROLINA DEPARTMENT OF TRANSPORTATION RALEIGH SUBSTRUCTURE					
BENT 1 STAGE 2					
REVISIONS					
NO.	BY:	DATE:	NO.	BY:	DATE:
1			3		
2			4		

SHEET NO. S-49  
TOTAL SHEETS 58

DOCUMENT NOT CONSIDERED FINAL  
 UNLESS ALL SIGNATURES COMPLETED