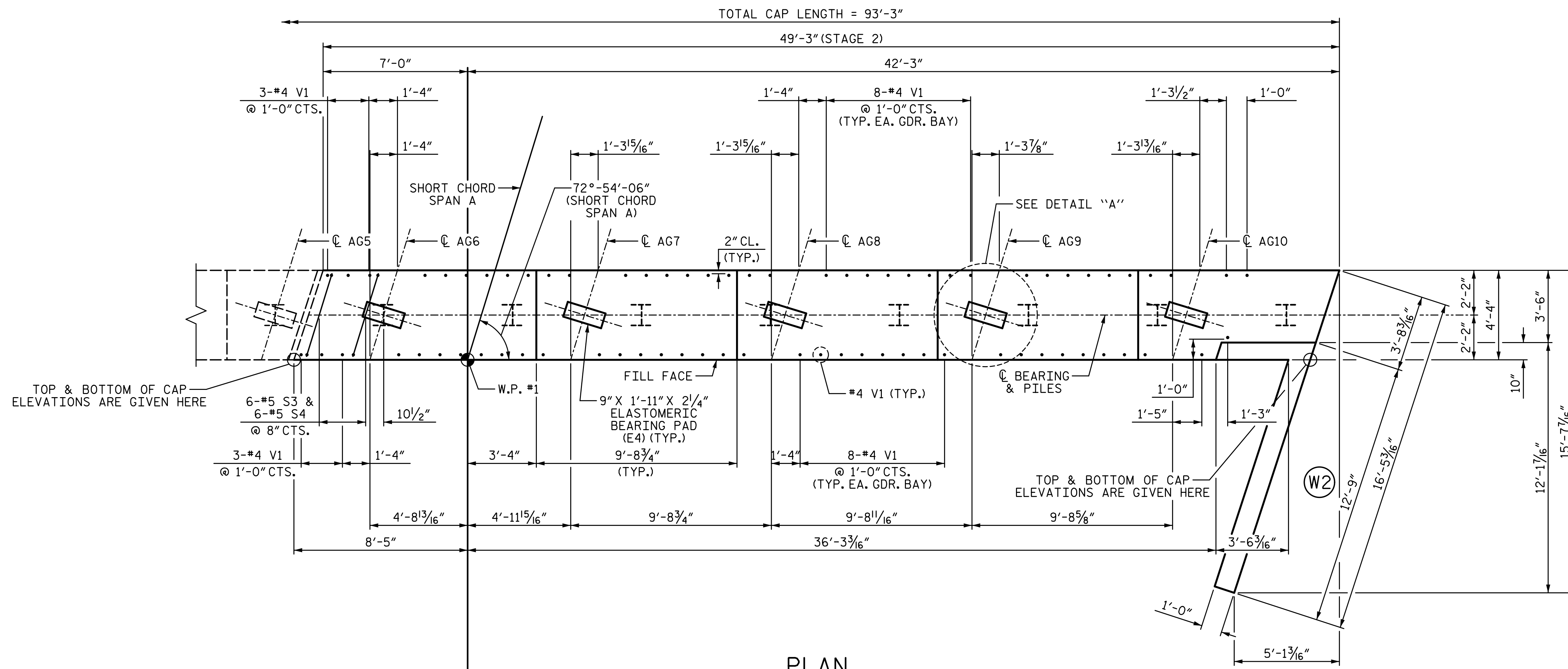
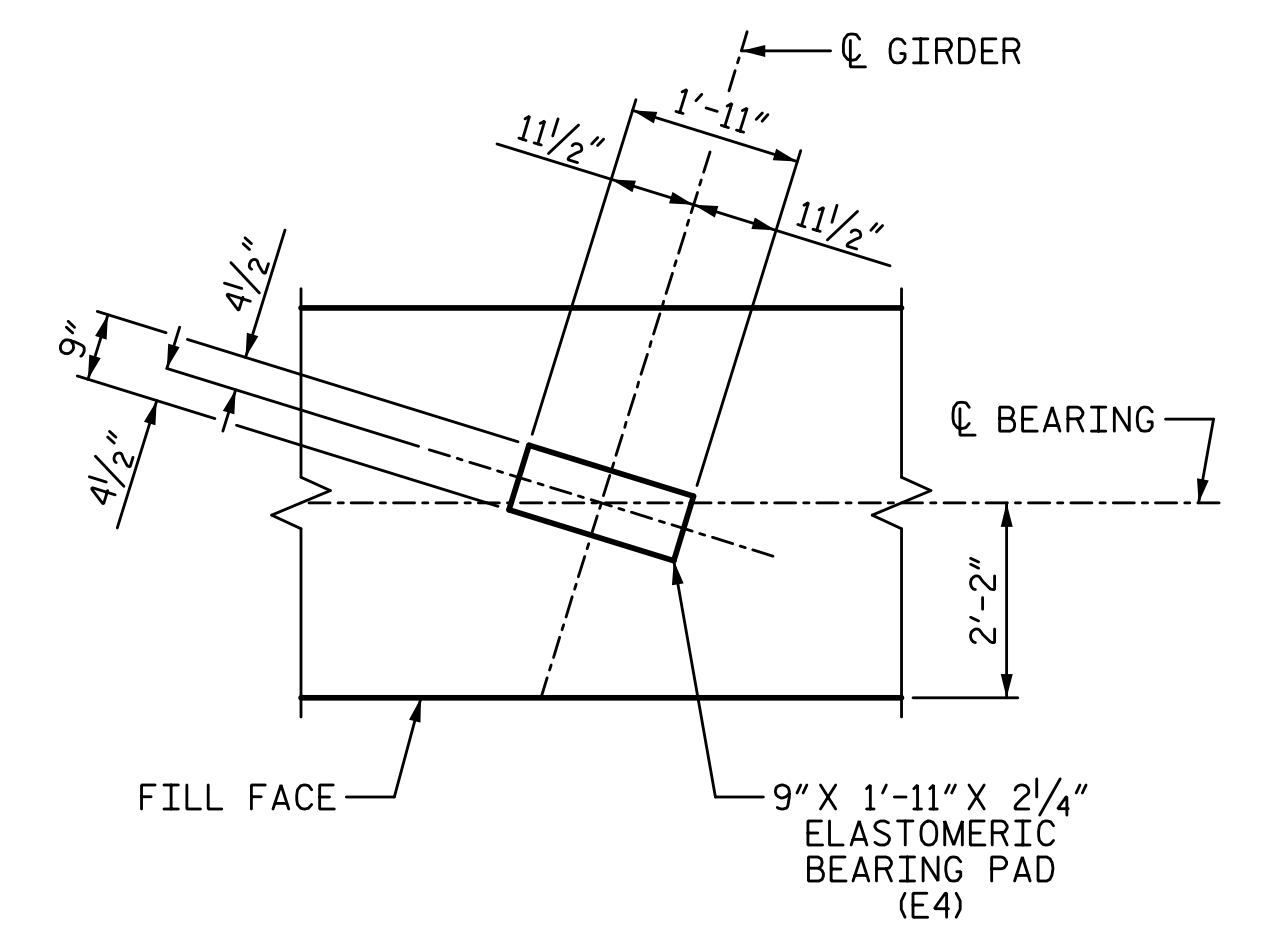


2/7/2023 11:20:00 AM P:\Raleigh\Projects\2018\Division 7 (SEA)\17BP7R142 Guilford 225 (Rehobeth Ch Rd over I-85 Bus)\Structures\Drawings\Final\17BP7R142\_SMJ\_EL\_400225.dgn

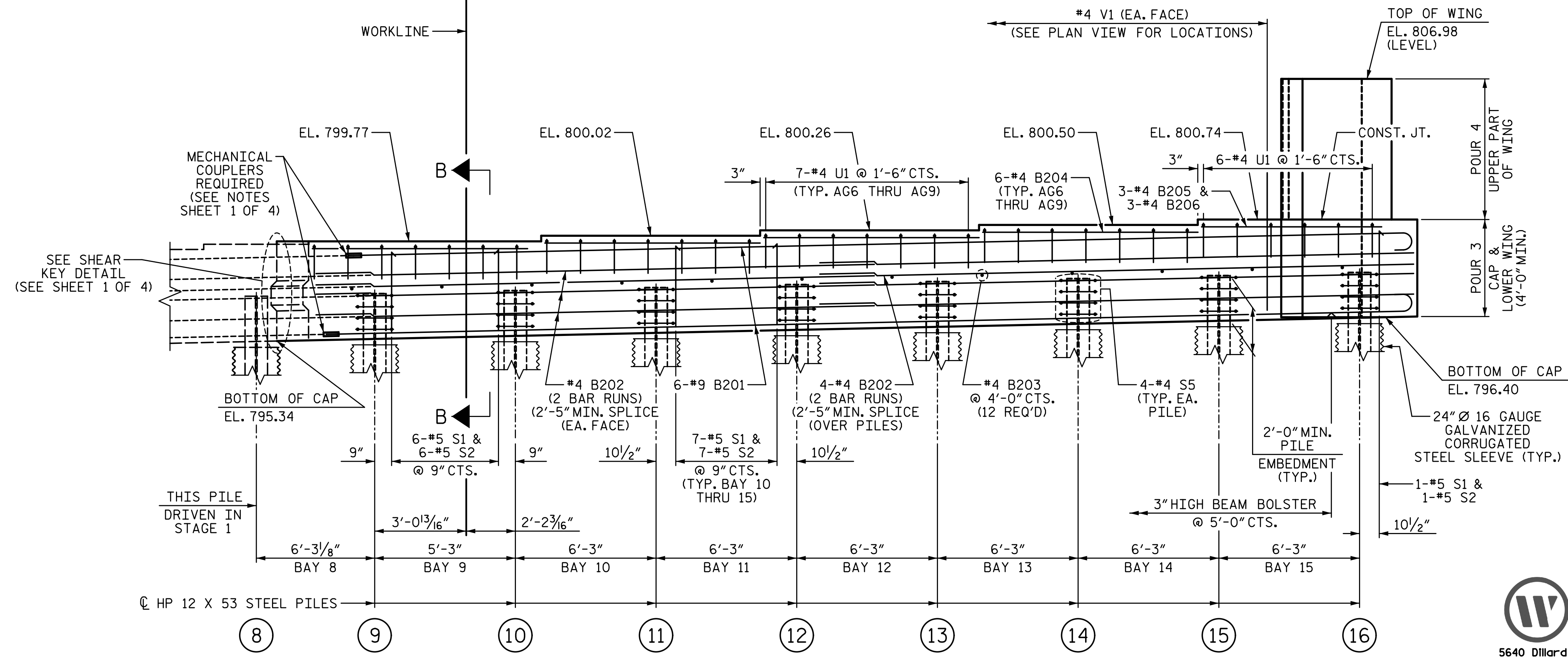


PLAN



DETAIL "A"  
(TYP. EA. GIRDER)

TOP OF PILE ELEVATION	
PILE	ELEVATION
9	797.47
10	797.58
11	797.71
12	797.85
13	797.98
14	798.12
15	798.25
16	798.38

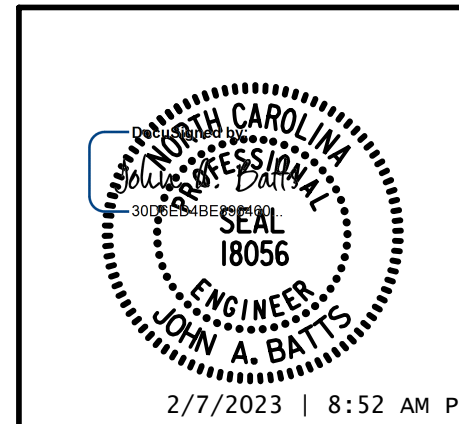


ELEVATION

FOR LOCATIONS OF S3 AND S4 BARS, SEE PLAN VIEW.

PROJECT NO. BP7.R006.3  
GUILFORD COUNTY  
 STATION: 18+82.09 -L-  
 SHEET 2 OF 4

STATE OF NORTH CAROLINA  
 DEPARTMENT OF TRANSPORTATION  
 RALEIGH  
 SUBSTRUCTURE  
 END BENT 1  
 STAGE 2



DRAWN BY: T. BANKOVICH DATE: 2-22  
 CHECKED BY: J.A. BATTS DATE: 2-22  
 DESIGN ENGINEER OF RECORD: J.A. BATTS DATE: 2-22

REVISIONS		SHEET NO.	
NO.	DATE	NO.	DATE
1		3	
2		4	

DOCUMENT NOT CONSIDERED FINAL  
 UNLESS ALL SIGNATURES COMPLETED